

Converting Colors

Decimal(11835516)

Have a look what the booklet for
Decimal(11835516) contains.

Decimal(11835516)	3
<i>Conversions</i>	4
<i>Details</i>	6
<i>Harmonies</i>	11
<i>Previews</i>	23
<i>Color Blindness Simulation</i>	26
<i>CSS Examples</i>	29

Color

Decimal(11835516)

Conversions

Conversions Part 1

Format	Color
Hex	B4987C
RGB	180, 152, 124
RGB Percent	71%, 60%, 49%
CMY	0.2941, 0.4039, 0.5137
CMYK	0.00, 0.16, 0.31, 0.29
HSL	30°, 27%, 60%
HSV	30°, 31%, 71%
XYZ	33.6887, 33.6150, 23.7815
YIQ	157.1800, 25.6760, -2.7720

Conversions

Conversions Part 2

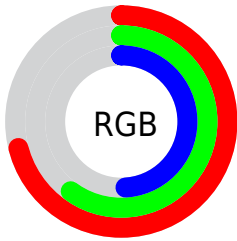
Format	Color
RYB	180, 180, 124
Decimal	11835516
CIELab	64.66, 6.20, 18.62
CIElCh	65, 19.620, 71.594
Yxy	33.6150, 0.3699, 0.3690
Android (android.graphics.Color)	4290025596 (0xFFB4987C)
YUV	157.1800, -16.3577, 20.0131
Hunter-Lab	57.9785, 2.2562, 16.2654

Details

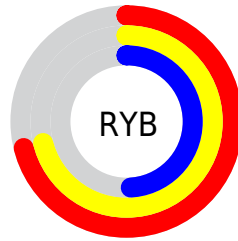
The Decimal color **11835516** is a light color, and the websafe version is hex **999966**. A complement of this color would be **8165556**, and the grayscale version is **10329501**.

A 20% lighter version of the original color is **15584945**, and **8283467** is the 20% darker color. If you saturate the color by 10%, you get **11833194**, and if you desaturate by 10%, it is **11837838**.

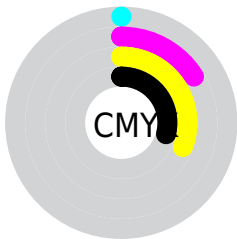
Distribution



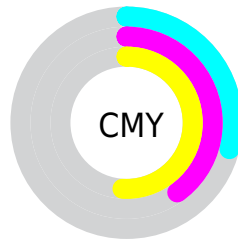
- Red (71%)
- Green (60%)
- Blue (49%)



- Red (71%)
- Yellow (71%)
- Blue (49%)



- Cyan (0%)
- Magenta (16%)
- Yellow (31%)
- Black (29%)



- Cyan (29%)
- Magenta (40%)
- Yellow (51%)

Brightness & Saturation Gradients

These gradients show how the Decimal color 11835516 changes by changing the brightness by 10 percent. The first figure shows a shift by +10% for each color and the second figure -10%.

Similar to the brightness gradients but the following saturation gradients show a change of the Decimal color 11835516 by changing the saturation by 10% instead.

 11835516

 11835516

16777215

 10059363

 15584945

 8283467

 16771788

 6638900

 16777192

 4994591

 3416327

 1968896

 0

 11835516

 11835516

 11833194

 11837838

■ 11830872

■ 11840160

■ 11828550

■ 11842482

■ 11826228

■ 11844804

■ 11823906

■ 11847126

■ 11821584

■ 11849448

■ 11819520

■ 11851770

■ 11854079

■ 11856383

Harmonies

Analogous

The Analogous color harmony consists of three colors that are next to each other on the color wheel.



12555142



11835516



10722938

Triad

The Triadic color harmony groups three colors that are evenly spaced from another and form a triangle on the color wheel.



11835516



7317411



11048631

Complementary

The Complementary color scheme is a pair of colors which are on the opposite of each other on the color wheel.



11835516



8165556

Split Complementary

Split-complementary colors differ from the complementary color scheme. The scheme consists of three colors, the original color and two neighbors of the complement color.



9542847



11835516



7185843

Square

The Square scheme is like the rectangle color scheme, but the four colors are evenly spaced on the color wheel.



11835516



8169105



8102590



12161704

Rectangle

The Rectangle color scheme consists of four colors that form a rectangle on the color wheel.



11835516



9871743



8102590



10590395

Sweetspot

The Sweet Spot groups the original color and five complimentary colors.



11835516



15458517



11828376



7696232



16119285



7697781

Same Dimension

The Same Dimension uses a secret algorithm to generate beautiful new colors.



11835516



15450004



11842428



5854544



10046464



1707264

Inverse Universe

The Inverse Universe completely reimagines the original color for something new.



8165556



9748459



8158388



5264729



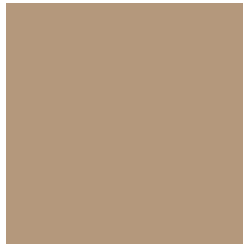
19865



3354

Previews

White Background



This preview shows how the Decimal color 11835516 looks on a white background.

Color Contrast Check

Large Text (above 18pt) WCAG AA × Fail

Any Text WCAG AA × Fail

Large Text (above 18pt) WCAG AAA × Fail

Any Text WCAG AAA × Fail

Black Background



This preview shows how the Decimal color 11835516 looks on a black background.

Color Contrast Check

Large Text (above 18pt) WCAG AA ✓ Pass

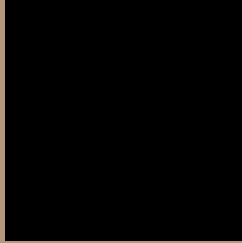
Any Text WCAG AA ✓ Pass

Large Text (above 18pt) WCAG AAA ✓ Pass

Any Text WCAG AAA ✓ Pass

If you want to check with other color combinations, try the [Color Contrast Checker](#).

Decimal 11835516 Background



This preview shows how black text looks on a background with the Decimal color 11835516.



This preview shows how white text looks on a background with the Decimal color 11835516.

Color Blindness Simulation

Color vision deficiency is a very complex topic, and I could not describe the different causes any better than Wikipedia does, so if you want to learn more, you should check out their [article about color blindness](#).

Dichromacy



Original Color
11835516

Protanopia
10984830

Deuteranopia
12031868



Tritanopia
12096415

Trichromacy



Original Color
11835516

Protanomaly
11311997

Deuteranomaly
11966332

Tritanomaly
12031378

Monochromacy



Original Color
11835516

Achromatopsia
10329501

Achromatomaly
10853265

CSS Examples

Text

The CSS property to change the color of the text to Decimal 11835516 is called "color". The color property can be set on classes, ids or directly on the HTML element.

This example shows how text in the color #B4987C looks like.

```
.text, #text, p{  
    color:#B4987C  
}
```

If you want to add a text shadow in that color use the text-shadow property, you can generate a text shadow directly with our [CSS Text Shadow Generator](#).

Here you see how black text with a 4 pixel #B4987C colored shadow looks like.

```
.shadow{ text-shadow: 4px 4px 2px #B4987C
}
```

Border

The CSS property to change the border of an element to Decimal 11835516 is called "border". The border property can be set on classes, ids or directly on the HTML element.

This example shows the color as border, it can be applied via the CSS property "border" or "border-color".

```
.border, #border, table{ border:4px solid
#B4987C }
```

If only the border color should be changed use the property `border-color`.

```
.border{ border-color:#B4987C }
```

If you want to add a box shadow in that color use:

Here you see how a box with a 4 pixel #B4987C colored shadow looks like.

```
.boxshadow{ -moz-box-shadow:4px 4px 4px  
4px #B4987C; -webkit-box-shadow:4px 4px  
4px 4px #B4987C; box-shadow:4px 4px 4px  
4px #B4987C }
```

Background

The CSS property to change the background color of an element to Decimal 11835516 is called "background". The background property can be set on classes, ids or directly on the HTML element.

```
.background, #background, body{  
background:#B4987C }
```

If only the background color should be changed can be used:

```
.background{ background-color:#B4987C }
```

This example shows the color as background, it is applied via the CSS property "background".

To optimize and compress your CSS code, you can use our [online CSS compressor and optimizer](#) based on csstidy. If you want to create a linear or radial gradient as background or border, check our [CSS Gradient Generator](#).

Hey! You found this booklet interesting? Support Converting Colors with the new Membership Option!

The pro membership hides all ads, plus gives you double the colors in the color bucket, and more awesome pro features!

[Learn more, Memberships starting at \\$2.50/m!](#)

**Follow me
on Twitter!**

@ConvertingColor