

Converting Colors

Decimal(11890283)

Have a look what the booklet for
Decimal(11890283) contains.

Decimal(11890283)	3
<i>Conversions</i>	4
<i>Details</i>	6
<i>Harmonies</i>	11
<i>Previews</i>	23
<i>Color Blindness Simulation</i>	26
<i>CSS Examples</i>	29

Color

Decimal(11890283)

Conversions

Conversions Part 1

Format	Color
Hex	B56E6B
RGB	181, 110, 107
RGB Percent	71%, 43%, 42%
CMY	0.2902, 0.5686, 0.5804
CMYK	0.00, 0.39, 0.41, 0.29
HSL	2°, 33%, 56%
HSV	2°, 41%, 71%
XYZ	27.2858, 22.0372, 16.7254
YIQ	130.8870, 43.2790, 14.1190

Conversions

Conversions Part 2

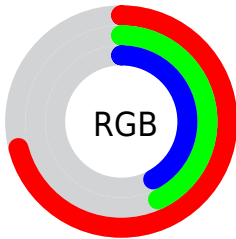
Format	Color
RYB	181, 110, 107
Decimal	11890283
CIELab	54.07, 27.83, 13.69
CIElCh	54, 31.016, 26.198
Yxy	22.0372, 0.4131, 0.3337
Android (android.graphics.Color)	4290080363 (0xFFB56E6B)
YUV	130.8870, -11.7763, 43.9491
Hunter-Lab	46.9437, 21.6007, 11.7364

Details

The Decimal color **11890283** is a dark color, and the websafe version is hex **996666**. A complement of this color would be **7058101**, and the grayscale version is **8618883**.

A 20% lighter version of the original color is **15704734**, and **8207676** is the 20% darker color. If you saturate the color by 10%, you get **11885913**, and if you desaturate by 10%, it is **11894653**.

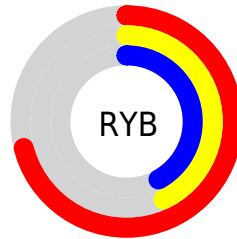
Distribution



Red (71%)

Green (43%)

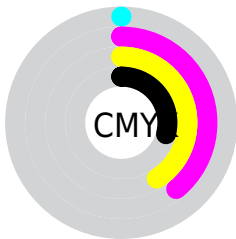
Blue (42%)



Red (71%)

Yellow (43%)

Blue (42%)

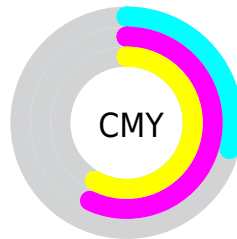


Cyan (0%)

Magenta (39%)

Yellow (41%)

Black (29%)



Cyan (29%)

Magenta (57%)

Yellow (58%)

Brightness & Saturation Gradients

These gradients show how the Decimal color 11890283 changes by changing the brightness by 10 percent. The first figure shows a shift by +10% for each color and the second figure -10%.

Similar to the brightness gradients but the following saturation gradients show a change of the Decimal color 11890283 by changing the saturation by 10% instead.

 11890283

 11890283

16777215

 10048851

 15704734

 8207676

 16760505

 6497574

 16767701

 4722194

 16775153

 3145728

 393216

 0

 11890283

 11890283

 11885913

 11894653

■ 11881287

■ 11899279

■ 11876917

■ 11903649

■ 11872547

■ 11908019

■ 11867921

■ 11912646

■ 11863808

■ 11917016

■ 11921642

■ 11926012

■ 11927551

Harmonies

Analogous

The Analogous color harmony consists of three colors that are next to each other on the color wheel.



11693446



11890283



11236694

Triad

The Triadic color harmony groups three colors that are evenly spaced from another and form a triangle on the color wheel.



11890283



5999971



5539254

Complementary

The Complementary color scheme is a pair of colors which are on the opposite of each other on the color wheel.



11890283



7058101

Split Complementary

Split-complementary colors differ from the complementary color scheme. The scheme consists of three colors, the original color and two neighbors of the complement color.



2329773



11890283



3641213

Square

The Square scheme is like the rectangle color scheme, but the four colors are evenly spaced on the color wheel.



11890283



8095568



888728



8354993

Rectangle

The Rectangle color scheme consists of four colors that form a rectangle on the color wheel.



11890283



10386253



888728



4491445

Sweetspot

The Sweet Spot groups the original color and five complimentary colors.



11890283



15454414



11889587



7693925



16119285



7697781

Same Dimension

The Same Dimension uses a secret algorithm to generate beautiful new colors.



11890283



15432824



11899499



5853520



10028544



1704192

Inverse Universe

The Inverse Universe completely reimagines the original color for something new.



7058101



7923435



7048885



5265753



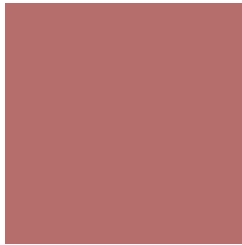
37785



6170

Previews

White Background



This preview shows how the Decimal color 11890283 looks on a white background.

Color Contrast Check

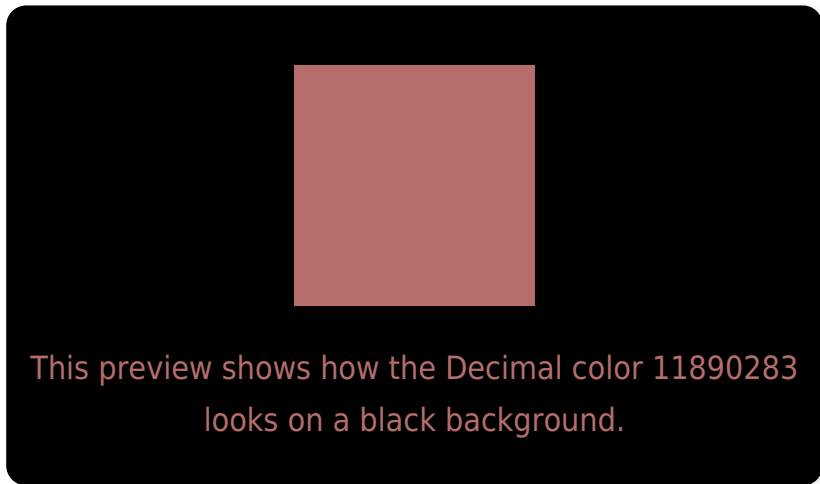
Large Text (above 18pt) WCAG AA ✓ Pass

Any Text WCAG AA ✗ Fail

Large Text (above 18pt) WCAG AAA ✗ Fail

Any Text WCAG AAA ✗ Fail

Black Background



Color Contrast Check

Large Text (above 18pt) WCAG AA ✓ Pass

Any Text WCAG AA ✓ Pass

Large Text (above 18pt) WCAG AAA ✓ Pass

Any Text WCAG AAA × Fail

If you want to check with other color combinations, try the [Color Contrast Checker](#).

Decimal 11890283 Background



This preview shows how black text looks on a background with the Decimal color 11890283.

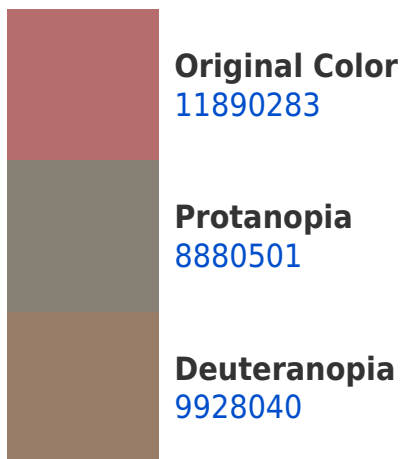



This preview shows how white text looks on a background with the Decimal color 11890283.

Color Blindness Simulation

Color vision deficiency is a very complex topic, and I could not describe the different causes any better than Wikipedia does, so if you want to learn more, you should check out their [article about color blindness](#).

Dichromacy





Tritanopia
11955573

Trichromacy



Original Color
11890283

Protanomaly
9992817

Deuteranomaly
10647657

Tritanomaly
11955569

Monochromacy



Original Color
11890283

Achromatopsia
8618883

Achromatomaly
9796474

CSS Examples

Text

The CSS property to change the color of the text to Decimal 11890283 is called "color". The color property can be set on classes, ids or directly on the HTML element.

This example shows how text in the color #B56E6B looks like.

```
.text, #text, p{  
    color:#B56E6B  
}
```

If you want to add a text shadow in that color use the text-shadow property, you can generate a text shadow directly with our [CSS Text Shadow Generator](#).

Here you see how black text with a 4 pixel #B56E6B colored shadow looks like.

```
.shadow{ text-shadow: 4px 4px 2px #B56E6B
}
```

Border

The CSS property to change the border of an element to Decimal 11890283 is called "border". The border property can be set on classes, ids or directly on the HTML element.

This example shows the color as border, it can be applied via the CSS property "border" or "border-color".

```
.border, #border, table{ border:4px solid
#B56E6B }
```

If only the border color should be changed use the property `border-color`.

```
.border{ border-color:#B56E6B }
```

If you want to add a box shadow in that color use:

Here you see how a box with a 4 pixel #B56E6B colored shadow looks like.

```
.boxshadow{ -moz-box-shadow:4px 4px 4px  
4px #B56E6B; -webkit-box-shadow:4px 4px  
4px 4px #B56E6B; box-shadow:4px 4px 4px  
4px #B56E6B }
```

Background

The CSS property to change the background color of an element to Decimal 11890283 is called "background". The background property can be set on classes, ids or directly on the HTML element.

```
.background, #background, body{  
background:#B56E6B }
```

If only the background color should be changed can be used:

```
.background{ background-color:#B56E6B }
```

This example shows the color as background, it is applied via the CSS property "background".

To optimize and compress your CSS code, you can use our [online CSS compressor and optimizer](#) based on csstidy. If you want to create a linear or radial gradient as background or border, check our [CSS Gradient Generator](#).

Hey! You found this booklet interesting? Support Converting Colors with the new Membership Option!

The pro membership hides all ads, plus gives you double the colors in the color bucket, and more awesome pro features!

[Learn more, Memberships starting at \\$2.50/m!](#)

**Follow me
on Twitter!**

@ConvertingColor