

# Converting Colors

Decimal(11895114)

Have a look what the booklet for  
Decimal(11895114) contains.

<b>Decimal(11895114)</b> .....	3
<i><b>Conversions</b></i> .....	4
<i><b>Details</b></i> .....	6
<i><b>Harmonies</b></i> .....	11
<i><b>Previews</b></i> .....	23
<i><b>Color Blindness Simulation</b></i> .....	26
<i><b>CSS Examples</b></i> .....	29

**Color**

**Decimal(11895114)**

# Conversions

## Conversions Part 1

Format	Color
Hex	B5814A
RGB	181, 129, 74
RGB Percent	71%, 51%, 29%
CMY	0.2902, 0.4941, 0.7098
CMYK	0.00, 0.29, 0.59, 0.29
HSL	31°, 42%, 50%
HSV	31°, 59%, 71%
XYZ	28.1423, 26.0187, 10.0174
YIQ	138.2780, 48.6470, -6.0810

# Conversions

## Conversions Part 2

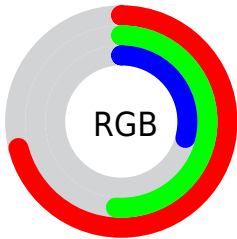
<b>Format</b>	<b>Color</b>
<a href="#">RYB</a>	<a href="#">175, 181, 74</a>
Decimal	<a href="#">11895114</a>
CIELab	<a href="#">58.05, 14.05, 37.39</a>
CIELCh	<a href="#">58, 39.947, 69.402</a>
Yxy	<a href="#">26.0187, 0.4385, 0.4054</a>
Android (android.graphics.Color)	<a href="#">4290085194</a> ( <a href="#">0xFFB5814A</a> )
YUV	<a href="#">138.2780, -31.6891, 37.4672</a>
Hunter-Lab	<a href="#">51.0085, 9.2169, 24.0622</a>

# Details

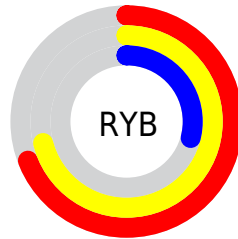
The Decimal color **11895114** is a dark color, and the websafe version is hex **CC9966**. A complement of this color would be **4882101**, and the grayscale version is **9145227**.

A 20% lighter version of the original color is **15775356**, and **8212507** is the 20% darker color. If you saturate the color by 10%, you get **11892792**, and if you desaturate by 10%, it is **11897436**.

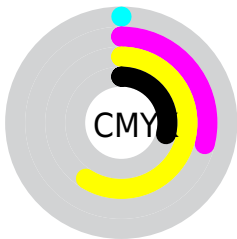
# Distribution



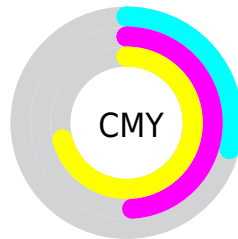
- Red (71%)
- Green (51%)
- Blue (29%)



- Red (69%)
- Yellow (71%)
- Blue (29%)



- Cyan (0%)
- Magenta (29%)
- Yellow (59%)
- Black (29%)



- Cyan (29%)
- Magenta (49%)
- Yellow (71%)

# Brightness & Saturation Gradients

These gradients show how the Decimal color 11895114 changes by changing the brightness by 10 percent. The first figure shows a shift by +10% for each color and the second figure -10%.

Similar to the brightness gradients but the following saturation gradients show a change of the Decimal color 11895114 by changing the saturation by 10% instead.



 11895114

 11895114

16777215

 10053682

 15775356

 8212507

 16765334

 6437122

 16772785

 4662016

 16777165

 2952960

 16777194

 917504

 0

 11895114

 11895114

 11892792

 11897436

■ 11890470

■ 11899758

■ 11888404

■ 11901824

■ 11886082

■ 11904146

■ 11885824

■ 11906469

■ 11908791

■ 11911113

■ 11913179

■ 11915501

# Harmonies

## Analogous

The Analogous color harmony consists of three colors that are next to each other on the color wheel.



13202785



11895114



9866565

# Triad

The Triadic color harmony groups three colors that are evenly spaced from another and form a triangle on the color wheel.



11895114



40598



10321602

# Complementary

The Complementary color scheme is a pair of colors which are on the opposite of each other on the color wheel.



11895114



4882101

# Split Complementary

Split-complementary colors differ from the complementary color scheme. The scheme consists of three colors, the original color and two neighbors of the complement color.



6786000



11895114



40119

# Square

The Square scheme is like the rectangle color scheme, but the four colors are evenly spaced on the color wheel.



11895114



4234354



38604



12612517

# Rectangle

The Rectangle color scheme consists of four colors that form a rectangle on the color wheel.



11895114



8295501



38604



9274312



# Sweetspot

The Sweet Spot groups the original color and five complimentary colors.



11895114



15455936



11881088



7694683



16119285



7697781



# Same Dimension

The Same Dimension uses a secret algorithm to generate beautiful new colors.



11895114



15440452



11908426



5854544



10047232



1707264



# Inverse Universe

The Inverse Universe completely reimagines the original color for something new.



4882101



4494827



4868789



5264729



19097

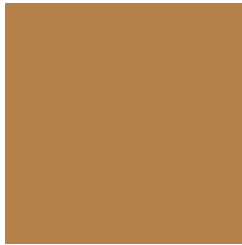


3098



# Previews

## White Background



This preview shows how the Decimal color 11895114 looks on a white background.

## Color Contrast Check

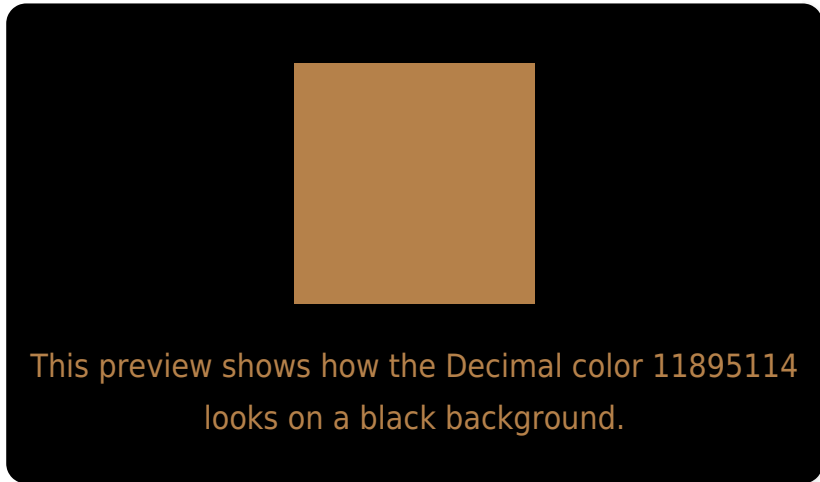
Large Text (above 18pt) WCAG AA ✓ Pass

Any Text WCAG AA × Fail

Large Text (above 18pt) WCAG AAA × Fail

Any Text WCAG AAA × Fail

# Black Background



## Color Contrast Check

Large Text (above 18pt) WCAG AA ✓ Pass

Any Text WCAG AA ✓ Pass

Large Text (above 18pt) WCAG AAA ✓ Pass

Any Text WCAG AAA × Fail

If you want to check with other color combinations, try the [Color Contrast Checker](#).



## Decimal 11895114 Background



This preview shows how black text looks on a background with the Decimal color 11895114.



This preview shows how white text looks on a background with the Decimal color 11895114.

# Color Blindness Simulation

Color vision deficiency is a very complex topic, and I could not describe the different causes any better than Wikipedia does, so if you want to learn more, you should check out their [article about color blindness](#).


## Dichromacy



**Original Color**  
11895114

**Protanopia**  
10128462

**Deuteranopia**  
11306313



**Tritanopia**  
12155523

# Trichromacy



# Monochromacy



# CSS Examples

## Text

The CSS property to change the color of the text to Decimal 11895114 is called "color". The color property can be set on classes, ids or directly on the HTML element.

This example shows how text in the color #B5814A looks like.

```
.text, #text, p{  
    color:#B5814A  
}
```

If you want to add a text shadow in that color use the text-shadow property, you can generate a text shadow directly with our [CSS Text Shadow Generator](#).

Here you see how black text with a 4 pixel #B5814A colored shadow looks like.

```
.shadow{ text-shadow: 4px 4px 2px #B5814A
}
```

## Border

The CSS property to change the border of an element to Decimal 11895114 is called "border". The border property can be set on classes, ids or directly on the HTML element.

This example shows the color as border, it can be applied via the CSS property "border" or "border-color".

```
.border, #border, table{ border:4px solid
#B5814A }
```

If only the border color should be changed use the property `border-color`.

```
.border{ border-color:#B5814A }
```

If you want to add a box shadow in that color use:

Here you see how a box with a 4 pixel #B5814A colored shadow looks like.

```
.boxshadow{ -moz-box-shadow:4px 4px 4px  
4px #B5814A; -webkit-box-shadow:4px 4px  
4px 4px #B5814A; box-shadow:4px 4px 4px  
4px #B5814A }
```

# Background

The CSS property to change the background color of an element to Decimal 11895114 is called "background". The background property can be set on classes, ids or directly on the HTML element.

```
.background, #background, body{  
background:#B5814A }
```

If only the background color should be changed can be used:

```
.background{ background-color:#B5814A }
```

This example shows the color as background, it is applied via the CSS property "background".

To optimize and compress your CSS code, you can use our [online CSS compressor and optimizer](#) based on csstidy. If you want to create a linear or radial gradient as background or border, check our [CSS Gradient Generator](#).



Hey! You found this booklet interesting? Support Converting Colors with the new Membership Option!

The pro membership hides all ads, plus gives you double the colors in the color bucket, and more awesome pro features!

**[Learn more, Memberships starting at \\$2.50/m!](#)**

**Follow me  
on Twitter!**

@ConvertingColor