

Converting Colors

Decimal(11895417)

Have a look what the booklet for
Decimal(11895417) contains.

Decimal(11895417)	3
<i>Conversions</i>	4
<i>Details</i>	6
<i>Harmonies</i>	11
<i>Previews</i>	23
<i>Color Blindness Simulation</i>	26
<i>CSS Examples</i>	29

Color

Decimal(11895417)

Conversions

Conversions Part 1

Format	Color
Hex	B58279
RGB	181, 130, 121
RGB Percent	71%, 51%, 47%
CMY	0.2902, 0.4902, 0.5255
CMYK	0.00, 0.28, 0.33, 0.29
HSL	9°, 29%, 59%
HSV	9°, 33%, 71%
XYZ	30.4899, 27.1695, 21.7264
YIQ	144.2230, 33.2850, 8.0130

Conversions

Conversions Part 2

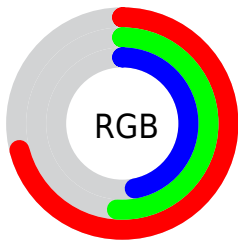
Format	Color
R_{YB}	181, 132, 121
Decimal	11895417
CIE _{Lab}	59.13, 18.44, 12.67
CIE _{LCh}	59, 22.367, 34.489
Yxy	27.1695, 0.3841, 0.3422
Android (android.graphics.Color)	4290085497 (0xFFB58279)
YUV	144.2230, -11.4489, 32.2534
Hunter-Lab	52.1244, 13.1950, 11.7739

Details

The Decimal color **11895417** is a dark color, and the websafe version is hex **CC9999**. A complement of this color would be **7974069**, and the grayscale version is **9474192**.

A 20% lighter version of the original color is **15644589**, and **8343624** is the 20% darker color. If you saturate the color by 10%, you get **11891559**, and if you desaturate by 10%, it is **11899275**.

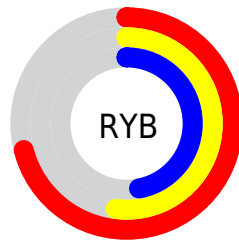
Distribution



Red (71%)

Green (51%)

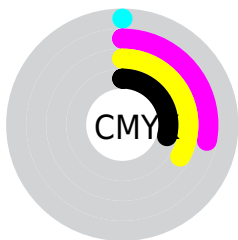
Blue (47%)



Red (71%)

Yellow (52%)

Blue (47%)

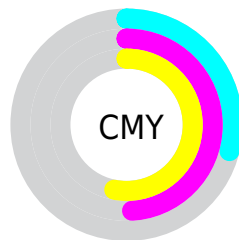


Cyan (0%)

Magenta (28%)

Yellow (33%)

Black (29%)



Cyan (29%)

Magenta (49%)

Yellow (53%)

Brightness & Saturation Gradients

These gradients show how the Decimal color 11895417 changes by changing the brightness by 10 percent. The first figure shows a shift by +10% for each color and the second figure -10%.

Similar to the brightness gradients but the following saturation gradients show a change of the Decimal color 11895417 by changing the saturation by 10% instead.

 11895417

 11895417

16777215

 10053984

 15644589

 8343624

 16765897

 6568242

 16773093

 4924189

 3345668

 1835009

 0

 11895417

 11895417

 11891559

 11899275

 11887445

 11903389

 11883587

 11907247

 11879473

 11911361

 11875615

 11915220

 11871756

 11919078

 11868928

 11923192

 11927039

 11927551

Harmonies

Analogous

The Analogous color harmony consists of three colors that are next to each other on the color wheel.



11894924



11895417



11241323

Triad

The Triadic color harmony groups three colors that are evenly spaced from another and form a triangle on the color wheel.



11895417



7247997



8032181

Complementary

The Complementary color scheme is a pair of colors which are on the opposite of each other on the color wheel.



11895417



7974069

Split Complementary

Split-complementary colors differ from the complementary color scheme. The scheme consists of three colors, the original color and two neighbors of the complement color.



6395313



11895417



6003089

Square

The Square scheme is like the rectangle color scheme, but the four colors are evenly spaced on the color wheel.



11895417



8688750



5544100



9799855

Rectangle

The Rectangle color scheme consists of four colors that form a rectangle on the color wheel.



11895417



10521703



5544100



7442869

Sweetspot

The Sweet Spot groups the original color and five complimentary colors.



11895417



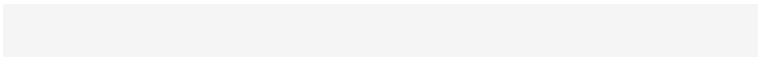
15456211



11893164



7694695



16119285



7697781

Same Dimension

The Same Dimension uses a secret algorithm to generate beautiful new colors.



11895417



15440781



11902841



5853776



10032896



1704960

Inverse Universe

The Inverse Universe completely reimagines the original color for something new.



7974069



9297387



7966389



5265497



33433



5658

Previews

White Background



This preview shows how the Decimal color 11895417 looks on a white background.

Color Contrast Check

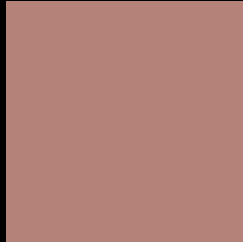
Large Text (above 18pt) WCAG AA ✓ Pass

Any Text WCAG AA × Fail

Large Text (above 18pt) WCAG AAA × Fail

Any Text WCAG AAA × Fail

Black Background



This preview shows how the Decimal color 11895417 looks on a black background.

Color Contrast Check

Large Text (above 18pt) WCAG AA ✓ Pass

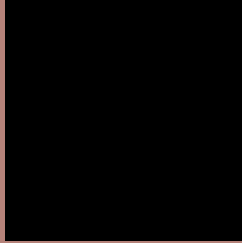
Any Text WCAG AA ✓ Pass

Large Text (above 18pt) WCAG AAA ✓ Pass

Any Text WCAG AAA × Fail

If you want to check with other color combinations, try the [Color Contrast Checker](#).

Decimal 11895417 Background



This preview shows how black text looks on a background with the Decimal color 11895417.



This preview shows how white text looks on a background with the Decimal color 11895417.

Color Blindness Simulation

Color vision deficiency is a very complex topic, and I could not describe the different causes any better than Wikipedia does, so if you want to learn more, you should check out their [article about color blindness](#).

Dichromacy





Tritanopia
12025993

Trichromacy



Original Color
11895417

Protanomaly
10586749

Deuteranomaly
11175544

Tritanomaly
11960707

Monochromacy



Original Color
11895417

Achromatopsia
9474192

Achromatomaly
10324872

CSS Examples

Text

The CSS property to change the color of the text to Decimal 11895417 is called "color". The color property can be set on classes, ids or directly on the HTML element.

This example shows how text in the color #B58279 looks like.

```
.text, #text, p{  
    color:#B58279  
}
```

If you want to add a text shadow in that color use the text-shadow property, you can generate a text shadow directly with our [CSS Text Shadow Generator](#).

Here you see how black text with a 4 pixel #B58279 colored shadow looks like.

```
.shadow{ text-shadow: 4px 4px 2px #B58279
}
```

Border

The CSS property to change the border of an element to Decimal 11895417 is called "border". The border property can be set on classes, ids or directly on the HTML element.

This example shows the color as border, it can be applied via the CSS property "border" or "border-color".

```
.border, #border, table{ border:4px solid
#B58279 }
```

If only the border color should be changed use the property `border-color`.

```
.border{ border-color:#B58279 }
```

If you want to add a box shadow in that color use:

Here you see how a box with a 4 pixel #B58279 colored shadow looks like.

```
.boxshadow{ -moz-box-shadow:4px 4px 4px  
4px #B58279; -webkit-box-shadow:4px 4px  
4px 4px #B58279; box-shadow:4px 4px 4px  
4px #B58279 }
```

Background

The CSS property to change the background color of an element to Decimal 11895417 is called "background". The background property can be set on classes, ids or directly on the HTML element.

```
.background, #background, body{  
background:#B58279 }
```

If only the background color should be changed can be used:

```
.background{ background-color:#B58279 }
```

This example shows the color as background, it is applied via the CSS property "background".

To optimize and compress your CSS code, you can use our [online CSS compressor and optimizer](#) based on csstidy. If you want to create a linear or radial gradient as background or border, check our [CSS Gradient Generator](#).

Hey! You found this booklet interesting? Support Converting Colors with the new Membership Option!

The pro membership hides all ads, plus gives you double the colors in the color bucket, and more awesome pro features!

[Learn more, Memberships starting at \\$2.50/m!](#)

**Follow me
on Twitter!**

@ConvertingColor