

Converting Colors

Decimal(11895945)

Have a look what the booklet for
Decimal(11895945) contains.

Decimal(11895945)	3
<i>Conversions</i>	4
<i>Details</i>	6
<i>Harmonies</i>	11
<i>Previews</i>	23
<i>Color Blindness Simulation</i>	26
<i>CSS Examples</i>	29

Color

Decimal(11895945)

Conversions

Conversions Part 1

Format	Color
Hex	B58489
RGB	181, 132, 137
RGB Percent	71%, 52%, 54%
CMY	0.2902, 0.4824, 0.4627
CMYK	0.00, 0.27, 0.24, 0.29
HSL	354°, 25%, 61%
HSV	354°, 27%, 71%
XYZ	31.8227, 28.1324, 27.4198
YIQ	147.2210, 27.5990, 11.9430

Conversions

Conversions Part 2

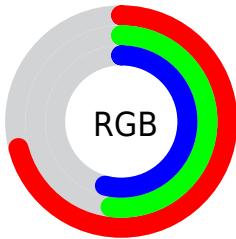
Format	Color
RYB	181, 132, 137
Decimal	11895945
CIELab	60.01, 19.57, 4.75
CIElCh	60, 20.139, 13.643
Yxy	28.1324, 0.3642, 0.3220
Android (android.graphics.Color)	4290086025 (0xFFB58489)
YUV	147.2210, -5.0390, 29.6242
Hunter-Lab	53.0400, 14.2755, 6.4772

Details

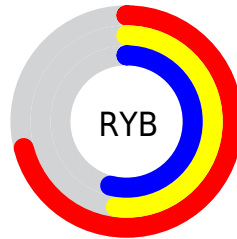
The Decimal color **11895945** is a light color, and the websafe version is hex **CC9999**. A complement of this color would be **8697264**, and the grayscale version is **9671571**.

A 20% lighter version of the original color is **15645118**, and **8344151** is the 20% darker color. If you saturate the color by 10%, you get **11891321**, and if you desaturate by 10%, it is **11900569**.

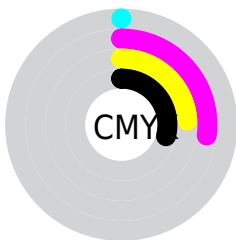
Distribution



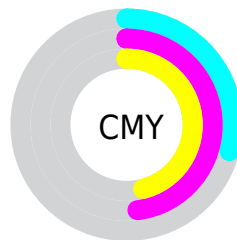
- Red (71%)
- Green (52%)
- Blue (54%)



- Red (71%)
- Yellow (52%)
- Blue (54%)



- Cyan (0%)
- Magenta (27%)
- Yellow (24%)
- Black (29%)



- Cyan (29%)
- Magenta (48%)
- Yellow (46%)

Brightness & Saturation Gradients

These gradients show how the Decimal color 11895945 changes by changing the brightness by 10 percent. The first figure shows a shift by +10% for each color and the second figure -10%.

Similar to the brightness gradients but the following saturation gradients show a change of the Decimal color 11895945 by changing the saturation by 10% instead.

 11895945

 11895945

16777215

 10120048

 15645118

 8344151

 16766426

 6634304

 16773879

 4989994

 3411734

 2162689

 0

 11895945

 11895945

 11891321

 11900569

 11886696

 11905194

 11882072

 11909818

 11877448

 11914442

 11872824

 11919322

 11867943

 11923947

 11863319

 11927547

 11862034

 11927551

Harmonies

Analogous

The Analogous color harmony consists of three colors that are next to each other on the color wheel.



11437467



11895945



11700089

Triad

The Triadic color harmony groups three colors that are evenly spaced from another and form a triangle on the color wheel.



11895945



8492919



7312818

Complementary

The Complementary color scheme is a pair of colors which are on the opposite of each other on the color wheel.



11895945



8697264

Split Complementary

Split-complementary colors differ from the complementary color scheme. The scheme consists of three colors, the original color and two neighbors of the complement color.



6330792



11895945



7248518

Square

The Square scheme is like the rectangle color scheme, but the four colors are evenly spaced on the color wheel.



11895945



9867886



6331288



8884147

Rectangle

The Rectangle color scheme consists of four colors that form a rectangle on the color wheel.



11895945



11242097



6331288



6920112

Sweetspot

The Sweet Spot groups the original color and five complimentary colors.



11895945



15456474



11502773



7694955



16119285



7697781

Same Dimension

The Same Dimension uses a secret algorithm to generate beautiful new colors.



11895945



15442087



11900804



5853265



10027024



1703939

Inverse Universe

The Inverse Universe completely reimagines the original color for something new.



11895945



15442087



8692405



5853265



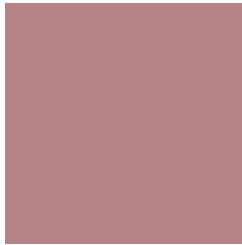
10027024



1703939

Previews

White Background



This preview shows how the Decimal color 11895945 looks on a white background.

Color Contrast Check

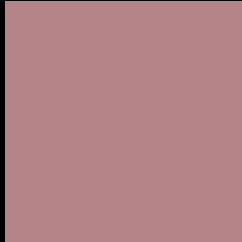
Large Text (above 18pt) WCAG AA ✓ Pass

Any Text WCAG AA ✗ Fail

Large Text (above 18pt) WCAG AAA ✗ Fail

Any Text WCAG AAA ✗ Fail

Black Background



This preview shows how the Decimal color 11895945 looks on a black background.

Color Contrast Check

Large Text (above 18pt) WCAG AA ✓ Pass

Any Text WCAG AA ✓ Pass

Large Text (above 18pt) WCAG AAA ✓ Pass

Any Text WCAG AAA × Fail

If you want to check with other color combinations, try the [Color Contrast Checker](#).

Decimal 11895945 Background



This preview shows how black text looks on a background with the Decimal color 11895945.



This preview shows how white text looks on a background with the Decimal color 11895945.

Color Blindness Simulation

Color vision deficiency is a very complex topic, and I could not describe the different causes any better than Wikipedia does, so if you want to learn more, you should check out their [article about color blindness](#).


Dichromacy



Original Color
11895945

Protanopia
9736336

Deuteranopia
10652808



Tritanopia
11895693

Trichromacy



Original Color
11895945

Protanomaly
10521741

Deuteranomaly
11110792

Tritanomaly
11895692

Monochromacy



Original Color
11895945

Achromatopsia
9671571

Achromatomaly
10456719

CSS Examples

Text

The CSS property to change the color of the text to Decimal 11895945 is called "color". The color property can be set on classes, ids or directly on the HTML element.

This example shows how text in the color #B58489 looks like.

```
.text, #text, p{  
  color:#B58489  
}
```

If you want to add a text shadow in that color use the text-shadow property, you can generate a text shadow directly with our [CSS Text Shadow Generator](#).

Here you see how black text with a 4 pixel #B58489 colored shadow looks like.

```
.shadow{ text-shadow: 4px 4px 2px #B58489
}
```

Border

The CSS property to change the border of an element to Decimal 11895945 is called "border". The border property can be set on classes, ids or directly on the HTML element.

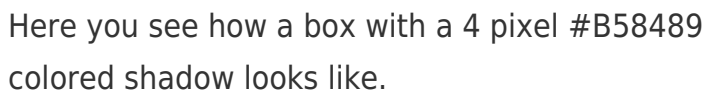
This example shows the color as border, it can be applied via the CSS property "border" or "border-color".

```
.border, #border, table{ border:4px solid
#B58489 }
```

If only the border color should be changed use the property `border-color`.

```
.border{ border-color:#B58489 }
```

If you want to add a box shadow in that color use:



Here you see how a box with a 4 pixel #B58489 colored shadow looks like.

```
.boxshadow{ -moz-box-shadow:4px 4px 4px  
4px #B58489; -webkit-box-shadow:4px 4px  
4px 4px #B58489; box-shadow:4px 4px 4px  
4px #B58489 }
```

Background

The CSS property to change the background color of an element to Decimal 11895945 is called "background". The background property can be set on classes, ids or directly on the HTML element.

```
.background, #background, body{  
background:#B58489 }
```

If only the background color should be changed can be used:

```
.background{ background-color:#B58489 }
```

This example shows the color as background, it is applied via the CSS property "background".

To optimize and compress your CSS code, you can use our [online CSS compressor and optimizer](#) based on csstidy. If you want to create a linear or radial gradient as background or border, check our [CSS Gradient Generator](#).

Hey! You found this booklet interesting? Support Converting Colors with the new Membership Option!

The pro membership hides all ads, plus gives you double the colors in the color bucket, and more awesome pro features!

[Learn more, Memberships starting at \\$2.50/m!](#)

**Follow me
on Twitter!**

@ConvertingColor