

Converting Colors

Decimal(11896946)

Have a look what the booklet for
Decimal(11896946) contains.

Decimal(11896946)	3
<i>Conversions</i>	4
<i>Details</i>	6
<i>Harmonies</i>	11
<i>Previews</i>	23
<i>Color Blindness Simulation</i>	26
<i>CSS Examples</i>	29

Color

Decimal(11896946)

Conversions

Conversions Part 1

Format	Color
Hex	B58872
RGB	181, 136, 114
RGB Percent	71%, 53%, 45%
CMY	0.2902, 0.4667, 0.5529
CMYK	0.00, 0.25, 0.37, 0.29
HSL	20°, 31%, 58%
HSV	20°, 37%, 71%
XYZ	30.8975, 28.6470, 19.8205
YIQ	146.9470, 33.8820, 2.6980

Conversions

Conversions Part 2

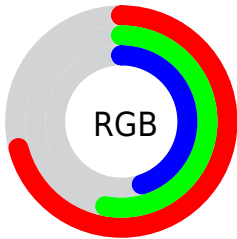
Format	Color
R_{YB}	181, 147, 114
Decimal	11896946
CIE _{Lab}	60.47, 14.19, 18.49
CIE _{LCh}	60, 23.309, 52.508
Yxy	28.6470, 0.3893, 0.3610
Android (android.graphics.Color)	4290087026 (0xFFB58872)
YUV	146.9470, -16.2429, 29.8645
Hunter-Lab	53.5229, 9.3788, 15.5098

Details

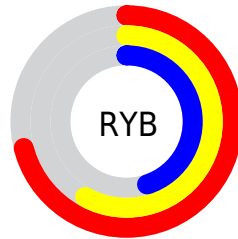
The Decimal color **11896946** is a dark color, and the websafe version is hex **CC9999**. A complement of this color would be **7511989**, and the grayscale version is **9671571**.

A 20% lighter version of the original color is **15646118**, and **8345154** is the 20% darker color. If you saturate the color by 10%, you get **11893856**, and if you desaturate by 10%, it is **11900036**.

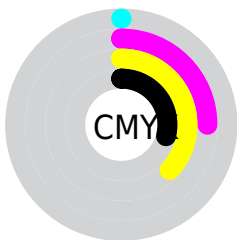
Distribution



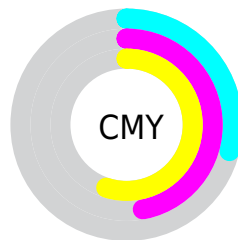
- Red (71%)
- Green (53%)
- Blue (45%)



- Red (71%)
- Yellow (58%)
- Blue (45%)



- Cyan (0%)
- Magenta (25%)
- Yellow (37%)
- Black (29%)



- Cyan (29%)
- Magenta (47%)
- Yellow (55%)

Brightness & Saturation Gradients

These gradients show how the Decimal color 11896946 changes by changing the brightness by 10 percent. The first figure shows a shift by +10% for each color and the second figure -10%.

Similar to the brightness gradients but the following saturation gradients show a change of the Decimal color 11896946 by changing the saturation by 10% instead.

 11896946

 11896946

16777215

 10055513

 15646118

 8345154

 16767425

 6569772

 16774877

 4925719

 16777210

 3412736

 1900544

 0

 11896946

 11896946

 11893856

 11900036

 11890766

 11903126

 11887676

 11906216

 11884330

 11909562

 11881239

 11912653

 11878149

 11915743

 11877120

 11918833

 11921919

 11924991

Harmonies

Analogous

The Analogous color harmony consists of three colors that are next to each other on the color wheel.



12354691



11896946



10915689

Triad

The Triadic color harmony groups three colors that are evenly spaced from another and form a triangle on the color wheel.



11896946



6528396



9342648

Complementary

The Complementary color scheme is a pair of colors which are on the opposite of each other on the color wheel.



11896946



7511989

Split Complementary

Split-complementary colors differ from the complementary color scheme. The scheme consists of three colors, the original color and two neighbors of the complement color.



7443898



11896946



5610913

Square

The Square scheme is like the rectangle color scheme, but the four colors are evenly spaced on the color wheel.



11896946



7969400



5937842



10979243

Rectangle

The Rectangle color scheme consists of four colors that form a rectangle on the color wheel.



11896946



9999210



5937842



8688058

Sweetspot

The Sweet Spot groups the original color and five complimentary colors.



11896946



15456721



11891360



7695206



16119285



7697781

Same Dimension

The Same Dimension uses a secret algorithm to generate beautiful new colors.



11896946



15443331



11905394



5854032



10039808



1705984

Inverse Universe

The Inverse Universe completely reimagines the original color for something new.



7511989



8636907



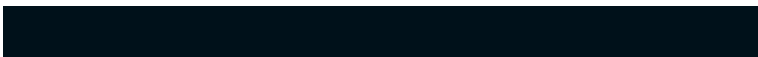
7503541



5264985



26521



4378

Previews

White Background



This preview shows how the Decimal color 11896946 looks on a white background.

Color Contrast Check

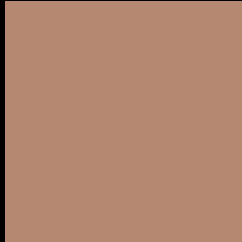
Large Text (above 18pt) WCAG AA ✓ Pass

Any Text WCAG AA × Fail

Large Text (above 18pt) WCAG AAA × Fail

Any Text WCAG AAA × Fail

Black Background



This preview shows how the Decimal color 11896946 looks on a black background.

Color Contrast Check

Large Text (above 18pt) WCAG AA ✓ Pass

Any Text WCAG AA ✓ Pass

Large Text (above 18pt) WCAG AAA ✓ Pass

Any Text WCAG AAA × Fail

If you want to check with other color combinations, try the [Color Contrast Checker](#).

Decimal 11896946 Background



This preview shows how black text looks on a background with the Decimal color 11896946.



This preview shows how white text looks on a background with the Decimal color 11896946.

Color Blindness Simulation

Color vision deficiency is a very complex topic, and I could not describe the different causes any better than Wikipedia does, so if you want to learn more, you should check out their [article about color blindness](#).

Dichromacy





Tritanopia
12092558

Trichromacy



Original Color
11896946

Protanomaly
10784373

Deuteranomaly
11504497

Tritanomaly
12027268

Monochromacy



Original Color
11896946

Achromatopsia
9671571

Achromatomaly
10456967

CSS Examples

Text

The CSS property to change the color of the text to Decimal 11896946 is called "color". The color property can be set on classes, ids or directly on the HTML element.

This example shows how text in the color #B58872 looks like.

```
.text, #text, p{  
    color:#B58872  
}
```

If you want to add a text shadow in that color use the text-shadow property, you can generate a text shadow directly with our [CSS Text Shadow Generator](#).

Here you see how black text with a 4 pixel #B58872 colored shadow looks like.

```
.shadow{ text-shadow: 4px 4px 2px #B58872
}
```

Border

The CSS property to change the border of an element to Decimal 11896946 is called "border". The border property can be set on classes, ids or directly on the HTML element.

This example shows the color as border, it can be applied via the CSS property "border" or "border-color".

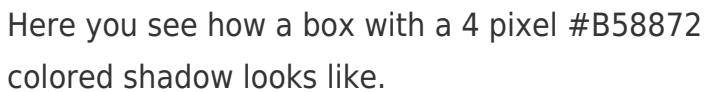
```
.border, #border, table{ border:4px solid
#B58872 }
```

If only the border color should be changed use the property `border-color`.

```
.border{ border-color:#B58872 }
```

If you want to add a box shadow in that color use:

Here you see how a box with a 4 pixel #B58872 colored shadow looks like.

A rectangular box with a brown border and a brown shadow. The box is white with a thin brown border on the top and left sides, and a thicker brown shadow on the bottom and right sides.

```
.boxshadow{ -moz-box-shadow:4px 4px 4px  
4px #B58872; -webkit-box-shadow:4px 4px  
4px 4px #B58872; box-shadow:4px 4px 4px  
4px #B58872 }
```

Background

The CSS property to change the background color of an element to Decimal 11896946 is called "background". The background property can be set on classes, ids or directly on the HTML element.

```
.background, #background, body{  
background:#B58872 }
```

If only the background color should be changed can be used:

```
.background{ background-color:#B58872 }
```

This example shows the color as background, it is applied via the CSS property "background".

To optimize and compress your CSS code, you can use our [online CSS compressor and optimizer](#) based on csstidy. If you want to create a linear or radial gradient as background or border, check our [CSS Gradient Generator](#).

Hey! You found this booklet interesting? Support Converting Colors with the new Membership Option!

The pro membership hides all ads, plus gives you double the colors in the color bucket, and more awesome pro features!

[Learn more, Memberships starting at \\$2.50/m!](#)

**Follow me
on Twitter!**

@ConvertingColor