

Converting Colors

Decimal(11898736)

Have a look what the booklet for
Decimal(11898736) contains.

Decimal(11898736)	3
<i>Conversions</i>	4
<i>Details</i>	6
<i>Harmonies</i>	11
<i>Previews</i>	23
<i>Color Blindness Simulation</i>	26
<i>CSS Examples</i>	29

Color

Decimal(11898736)

Conversions

Conversions Part 1

Format	Color
Hex	B58F70
RGB	181, 143, 112
RGB Percent	71%, 56%, 44%
CMY	0.2902, 0.4392, 0.5608
CMYK	0.00, 0.21, 0.38, 0.29
HSL	27°, 32%, 57%
HSV	27°, 38%, 71%
XYZ	31.8031, 30.6385, 19.5669
YIQ	150.8280, 32.5990, -1.5850

Conversions

Conversions Part 2

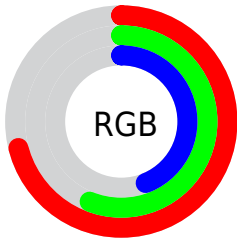
Format	Color
RYB	181, 168, 112
Decimal	11898736
CIELab	62.20, 10.05, 21.97
CIELCh	62, 24.155, 65.424
Yxy	30.6385, 0.3878, 0.3736
Android (android.graphics.Color)	4290088816 (0xFFB58F70)
YUV	150.8280, -19.1422, 26.4608
Hunter-Lab	55.3521, 5.6930, 17.7876

Details

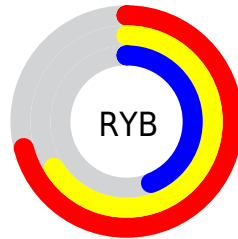
The Decimal color **11898736** is a dark color, and the websafe version is hex **CC9966**. A complement of this color would be **7378613**, and the grayscale version is **9934743**.

A 20% lighter version of the original color is **15648164**, and **8346944** is the 20% darker color. If you saturate the color by 10%, you get **11896158**, and if you desaturate by 10%, it is **11901314**.

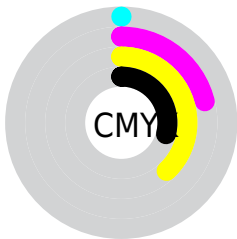
Distribution



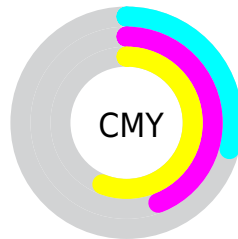
- Red (71%)
- Green (56%)
- Blue (44%)



- Red (71%)
- Yellow (66%)
- Blue (44%)



- Cyan (0%)
- Magenta (21%)
- Yellow (38%)
- Black (29%)



- Cyan (29%)
- Magenta (44%)
- Yellow (56%)

Brightness & Saturation Gradients

These gradients show how the Decimal color 11898736 changes by changing the brightness by 10 percent. The first figure shows a shift by +10% for each color and the second figure -10%.

Similar to the brightness gradients but the following saturation gradients show a change of the Decimal color 11898736 by changing the saturation by 10% instead.

 11898736

 11898736

16777215

 10057047

 15648164

 8346944

 16769471

 6636841

 16776667


 4927252

 16777208

 3414528

 1835008

 0

 11898736

 11898736

 11896158

 11901314

11893580

11903892

11891002

11906470

11888424

11909048

11885845

11911627

11883267

11914205

11882752

11916783

11919359

11921919

Harmonies

Analogous

The Analogous color harmony consists of three colors that are next to each other on the color wheel.



12618111



11898736



10655340

Triad

The Triadic color harmony groups three colors that are evenly spaced from another and form a triangle on the color wheel.



11898736



6136474



10457017

Complementary

The Complementary color scheme is a pair of colors which are on the opposite of each other on the color wheel.



11898736



7378613

Split Complementary

Split-complementary colors differ from the complementary color scheme. The scheme consists of three colors, the original color and two neighbors of the complement color.



8492993



11898736



5677486

Square

The Square scheme is like the rectangle color scheme, but the four colors are evenly spaced on the color wheel.



11898736



7512452



6659517



11897257

Rectangle

The Rectangle color scheme consists of four colors that form a rectangle on the color wheel.



11898736



9673583



6659517



9802429

Sweetspot

The Sweet Spot groups the original color and five complimentary colors.



11898736



15457489



11890839



7695718



16119285



7697781

Same Dimension

The Same Dimension uses a secret algorithm to generate beautiful new colors.



11898736



15445887



11907184



5854288



10044672



1706752

Inverse Universe

The Inverse Universe completely reimagines the original color for something new.



7378613



8370923



7370165



5264729



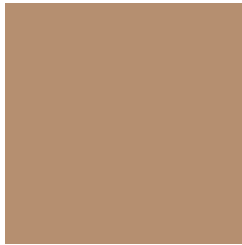
21657



3610

Previews

White Background



This preview shows how the Decimal color 11898736 looks on a white background.

Color Contrast Check

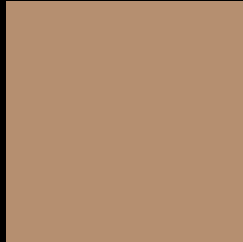
Large Text (above 18pt) WCAG AA × Fail

Any Text WCAG AA × Fail

Large Text (above 18pt) WCAG AAA × Fail

Any Text WCAG AAA × Fail

Black Background



This preview shows how the Decimal color 11898736 looks on a black background.

Color Contrast Check

Large Text (above 18pt) WCAG AA ✓ Pass

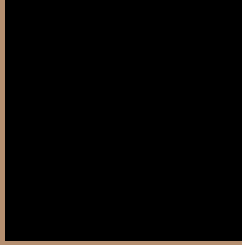
Any Text WCAG AA ✓ Pass

Large Text (above 18pt) WCAG AAA ✓ Pass

Any Text WCAG AAA ✓ Pass

If you want to check with other color combinations, try the [Color Contrast Checker](#).

Decimal 11898736 Background



This preview shows how black text looks on a background with the Decimal color 11898736.



This preview shows how white text looks on a background with the Decimal color 11898736.

Color Blindness Simulation

Color vision deficiency is a very complex topic, and I could not describe the different causes any better than Wikipedia does, so if you want to learn more, you should check out their [article about color blindness](#).


Dichromacy



Original Color
11898736

Protanopia
10589811

Deuteranopia
11702384



Tritanopia
12159637

Trichromacy



Original Color
11898736

Protanomaly
11047794

Deuteranomaly
11767920

Tritanomaly
12094600

Monochromacy



Original Color
11898736

Achromatopsia
9934743

Achromatomaly
10654857

CSS Examples

Text

The CSS property to change the color of the text to Decimal 11898736 is called "color". The color property can be set on classes, ids or directly on the HTML element.

This example shows how text in the color #B58F70 looks like.

```
.text, #text, p{  
    color:#B58F70  
}
```

If you want to add a text shadow in that color use the text-shadow property, you can generate a text shadow directly with our [CSS Text Shadow Generator](#).

Here you see how black text with a 4 pixel #B58F70 colored shadow looks like.

```
.shadow{ text-shadow: 4px 4px 2px #B58F70
}
```

Border

The CSS property to change the border of an element to Decimal 11898736 is called "border". The border property can be set on classes, ids or directly on the HTML element.

This example shows the color as border, it can be applied via the CSS property "border" or "border-color".

```
.border, #border, table{ border:4px solid
#B58F70 }
```

If only the border color should be changed use the property `border-color`.

```
.border{ border-color:#B58F70 }
```

If you want to add a box shadow in that color use:

Here you see how a box with a 4 pixel #B58F70 colored shadow looks like.

```
.boxshadow{ -moz-box-shadow:4px 4px 4px  
4px #B58F70; -webkit-box-shadow:4px 4px  
4px 4px #B58F70; box-shadow:4px 4px 4px  
4px #B58F70 }
```

Background

The CSS property to change the background color of an element to Decimal 11898736 is called "background". The background property can be set on classes, ids or directly on the HTML element.

```
.background, #background, body{  
background:#B58F70 }
```

If only the background color should be changed can be used:

```
.background{ background-color:#B58F70 }
```

This example shows the color as background, it is applied via the CSS property "background".

To optimize and compress your CSS code, you can use our [online CSS compressor and optimizer](#) based on csstidy. If you want to create a linear or radial gradient as background or border, check our [CSS Gradient Generator](#).

Hey! You found this booklet interesting? Support Converting Colors with the new Membership Option!

The pro membership hides all ads, plus gives you double the colors in the color bucket, and more awesome pro features!

[Learn more, Memberships starting at \\$2.50/m!](#)

**Follow me
on Twitter!**

@ConvertingColor