

Converting Colors

Decimal(11899267)

Have a look what the booklet for
Decimal(11899267) contains.

Decimal(11899267)	3
<i>Conversions</i>	4
<i>Details</i>	6
<i>Harmonies</i>	11
<i>Previews</i>	23
<i>Color Blindness Simulation</i>	26
<i>CSS Examples</i>	29

Color

Decimal(11899267)

Conversions

Conversions Part 1

Format	Color
Hex	B59183
RGB	181, 145, 131
RGB Percent	71%, 57%, 51%
CMY	0.2902, 0.4314, 0.4863
CMYK	0.00, 0.20, 0.28, 0.29
HSL	17°, 25%, 61%
HSV	17°, 28%, 71%
XYZ	33.2782, 31.7132, 25.8400
YIQ	154.1680, 25.9500, 3.2780

Conversions

Conversions Part 2

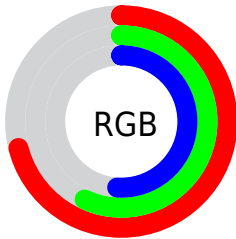
Format	Color
RYB	181, 150, 131
Decimal	11899267
CIELab	63.11, 11.44, 12.56
CIELCh	63, 16.989, 47.690
Yxy	31.7132, 0.3664, 0.3491
Android (android.graphics.Color)	4290089347 (0xFFB59183)
YUV	154.1680, -11.4218, 23.5317
Hunter-Lab	56.3145, 6.9314, 12.2148

Details

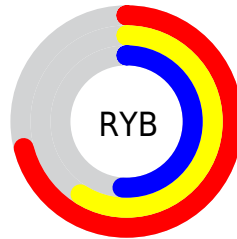
The Decimal color **11899267** is a light color, and the websafe version is hex **CC9999**. A complement of this color would be **8628149**, and the grayscale version is **10132122**.

A 20% lighter version of the original color is **15648696**, and **8347474** is the 20% darker color. If you saturate the color by 10%, you get **11895921**, and if you desaturate by 10%, it is **11902613**.

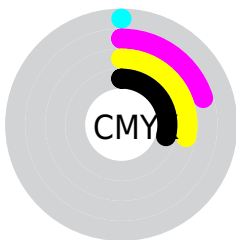
Distribution



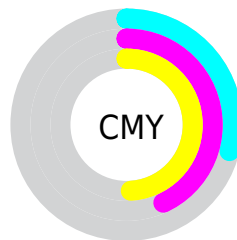
- Red (71%)
- Green (57%)
- Blue (51%)



- Red (71%)
- Yellow (59%)
- Blue (51%)



- Cyan (0%)
- Magenta (20%)
- Yellow (28%)
- Black (29%)



- Cyan (29%)
- Magenta (43%)
- Yellow (49%)

Brightness & Saturation Gradients

These gradients show how the Decimal color 11899267 changes by changing the brightness by 10 percent. The first figure shows a shift by +10% for each color and the second figure -10%.

Similar to the brightness gradients but the following saturation gradients show a change of the Decimal color 11899267 by changing the saturation by 10% instead.

 11899267

 11899267

16777215

 10123114

 15648696

 8347474

 16770004

 6702907

 16777200

 5058597

 3480336

 2097664

 0

 11899267

 11899267

 11895921

 11902613

 11892575

 11905959

 11889229

 11909305

 11885883

 11912651

 11882536

 11915997

 11879190

 11919344

 11875844

 11922687

 11875072

 11926015

 11927551

Harmonies

Analogous

The Analogous color harmony consists of three colors that are next to each other on the color wheel.



12095120



11899267



11179644

Triad

The Triadic color harmony groups three colors that are evenly spaced from another and form a triangle on the color wheel.



11899267



8036754



9672629

Complementary

The Complementary color scheme is a pair of colors which are on the opposite of each other on the color wheel.



11899267



8628149

Split Complementary

Split-complementary colors differ from the complementary color scheme. The scheme consists of three colors, the original color and two neighbors of the complement color.



8428726



11899267



7446945

Square

The Square scheme is like the rectangle color scheme, but the four colors are evenly spaced on the color wheel.



11899267



9084804



7577774



10916525

Rectangle

The Rectangle color scheme consists of four colors that form a rectangle on the color wheel.



11899267



10525051



7577774



9279926

Sweetspot

The Sweet Spot groups the original color and five complimentary colors.



11899267



15457752



11895720



7695722



16119285



7697781

Same Dimension

The Same Dimension uses a secret algorithm to generate beautiful new colors.



11899267



15446941



11905411



5854032



10038016



1705728

Inverse Universe

The Inverse Universe completely reimagines the original color for something new.



8628149



10343915



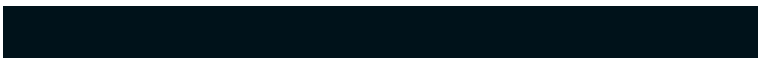
8622005



5265241



28313



4634

Previews

White Background



This preview shows how the Decimal color 11899267 looks on a white background.

Color Contrast Check

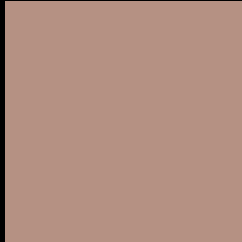
Large Text (above 18pt) WCAG AA × Fail

Any Text WCAG AA × Fail

Large Text (above 18pt) WCAG AAA × Fail

Any Text WCAG AAA × Fail

Black Background



This preview shows how the Decimal color 11899267 looks on a black background.

Color Contrast Check

Large Text (above 18pt) WCAG AA ✓ Pass

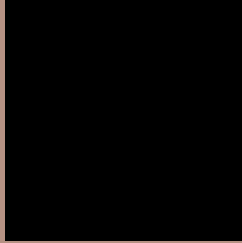
Any Text WCAG AA ✓ Pass

Large Text (above 18pt) WCAG AAA ✓ Pass

Any Text WCAG AAA ✓ Pass

If you want to check with other color combinations, try the [Color Contrast Checker](#).

Decimal 11899267 Background



This preview shows how black text looks on a background with the Decimal color 11899267.



This preview shows how white text looks on a background with the Decimal color 11899267.

Color Blindness Simulation

Color vision deficiency is a very complex topic, and I could not describe the different causes any better than Wikipedia does, so if you want to learn more, you should check out their [article about color blindness](#).

Dichromacy





Tritanopia
12029593

Trichromacy



Original Color
11899267

Protanomaly
11048326

Deuteranomaly
11702915

Tritanomaly
11964305

Monochromacy



Original Color
11899267

Achromatopsia
10132122

Achromatomaly
10786706

CSS Examples

Text

The CSS property to change the color of the text to Decimal 11899267 is called "color". The color property can be set on classes, ids or directly on the HTML element.

This example shows how text in the color #B59183 looks like.

```
.text, #text, p{  
    color:#B59183  
}
```

If you want to add a text shadow in that color use the text-shadow property, you can generate a text shadow directly with our [CSS Text Shadow Generator](#).

Here you see how black text with a 4 pixel #B59183 colored shadow looks like.

```
.shadow{ text-shadow: 4px 4px 2px #B59183
}
```

Border

The CSS property to change the border of an element to Decimal 11899267 is called "border". The border property can be set on classes, ids or directly on the HTML element.

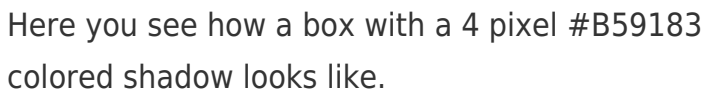
This example shows the color as border, it can be applied via the CSS property "border" or "border-color".

```
.border, #border, table{ border:4px solid
#B59183 }
```

If only the border color should be changed use the property `border-color`.

```
.border{ border-color:#B59183 }
```

If you want to add a box shadow in that color use:



Here you see how a box with a 4 pixel #B59183 colored shadow looks like.

```
.boxshadow{ -moz-box-shadow:4px 4px 4px  
4px #B59183; -webkit-box-shadow:4px 4px  
4px 4px #B59183; box-shadow:4px 4px 4px  
4px #B59183 }
```

Background

The CSS property to change the background color of an element to Decimal 11899267 is called "background". The background property can be set on classes, ids or directly on the HTML element.

```
.background, #background, body{  
background:#B59183 }
```

If only the background color should be changed can be used:

```
.background{ background-color:#B59183 }
```

This example shows the color as background, it is applied via the CSS property "background".

To optimize and compress your CSS code, you can use our [online CSS compressor and optimizer](#) based on csstidy. If you want to create a linear or radial gradient as background or border, check our [CSS Gradient Generator](#).

Hey! You found this booklet interesting? Support Converting Colors with the new Membership Option!

The pro membership hides all ads, plus gives you double the colors in the color bucket, and more awesome pro features!

[Learn more, Memberships starting at \\$2.50/m!](#)

**Follow me
on Twitter!**

@ConvertingColor