

Converting Colors

Decimal(11899541)

Have a look what the booklet for
Decimal(11899541) contains.

Decimal(11899541)	3
<i>Conversions</i>	4
<i>Details</i>	6
<i>Harmonies</i>	11
<i>Previews</i>	23
<i>Color Blindness Simulation</i>	26
<i>CSS Examples</i>	29

Color

Decimal(11899541)

Conversions

Conversions Part 1

Format	Color
Hex	B59295
RGB	181, 146, 149
RGB Percent	71%, 57%, 58%
CMY	0.2902, 0.4275, 0.4157
CMYK	0.00, 0.19, 0.18, 0.29
HSL	355°, 19%, 64%
HSV	355°, 19%, 71%
XYZ	34.7598, 32.5515, 32.8848
YIQ	156.8070, 19.8970, 8.3530

Conversions

Conversions Part 2

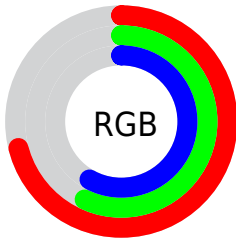
Format	Color
R_{YB}	181, 146, 149
Decimal	11899541
CIE _{Lab}	63.80, 13.61, 3.39
CIE _{LCh}	64, 14.028, 13.997
Yxy	32.5515, 0.3469, 0.3249
Android (android.graphics.Color)	4290089621 (0xFFB59295)
YUV	156.8070, -3.8489, 21.2173
Hunter-Lab	57.0539, 8.9058, 5.7641

Details

The Decimal color **11899541** is a light color, and the websafe version is hex **CC9999**. A complement of this color would be **9614770**, and the grayscale version is **10329501**.

A 20% lighter version of the original color is **15583435**, and **8413026** is the 20% darker color. If you saturate the color by 10%, you get **11894916**, and if you desaturate by 10%, it is **11904166**.

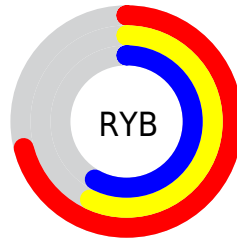
Distribution



Red (71%)

Green (57%)

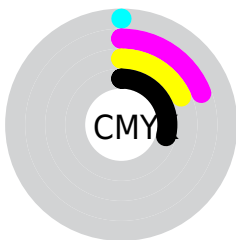
Blue (58%)



Red (71%)

Yellow (57%)

Blue (58%)

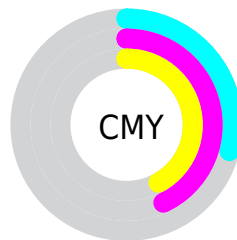


Cyan (0%)

Magenta (19%)

Yellow (18%)

Black (29%)



Cyan (29%)

Magenta (43%)

Yellow (42%)

Brightness & Saturation Gradients

These gradients show how the Decimal color 11899541 changes by changing the brightness by 10 percent. The first figure shows a shift by +10% for each color and the second figure -10%.

Similar to the brightness gradients but the following saturation gradients show a change of the Decimal color 11899541 by changing the saturation by 10% instead.



11899541



11899541

16777215



10123387



15583435



8413026



16770279



6703179



5124404



3546143



2228998



0



11899541



11899541



11894916



11904166

 11890292

 11908790

 11885667

 11913415

 11881043


 11918039

 11876162

 11922920


 11871538

 11927544

 11866913

 11927551

 11862289

 11862032

Harmonies

Analogous

The Analogous color harmony consists of three colors that are next to each other on the color wheel.



11572130



11899541



11768970

Triad

The Triadic color harmony groups three colors that are evenly spaced from another and form a triangle on the color wheel.



11899541



9478024



8756914

Complementary

The Complementary color scheme is a pair of colors which are on the opposite of each other on the color wheel.



11899541



9614770

Split Complementary

Split-complementary colors differ from the complementary color scheme. The scheme consists of three colors, the original color and two neighbors of the complement color.



8102315



11899541



8626579

Square

The Square scheme is like the rectangle color scheme, but the four colors are evenly spaced on the color wheel.



11899541



10394754



8102560



9738931

Rectangle

The Rectangle color scheme consists of four colors that form a rectangle on the color wheel.



11899541



11441796



8102560



8495025

Sweetspot

The Sweet Spot groups the original color and five complimentary colors.



11899541



15457758



11702965



7695726



16119285



7697781

Same Dimension

The Same Dimension uses a secret algorithm to generate beautiful new colors.



11899541



15447481



11903122



5853265



10027021



1703938

Inverse Universe

The Inverse Universe completely reimagines the original color for something new.



11899541



15447481



9611189



5853265



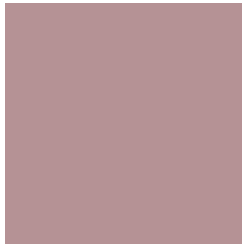
10027021



1703938

Previews

White Background



This preview shows how the Decimal color 11899541 looks on a white background.

Color Contrast Check

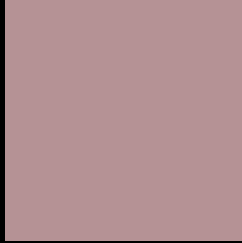
Large Text (above 18pt) WCAG AA × Fail

Any Text WCAG AA × Fail

Large Text (above 18pt) WCAG AAA × Fail

Any Text WCAG AAA × Fail

Black Background



This preview shows how the Decimal color 11899541 looks on a black background.

Color Contrast Check

Large Text (above 18pt) WCAG AA ✓ Pass

Any Text WCAG AA ✓ Pass

Large Text (above 18pt) WCAG AAA ✓ Pass

Any Text WCAG AAA ✓ Pass

If you want to check with other color combinations, try the [Color Contrast Checker](#).

Decimal 11899541 Background



This preview shows how black text looks on a background with the Decimal color 11899541.



This preview shows how white text looks on a background with the Decimal color 11899541.

Color Blindness Simulation

Color vision deficiency is a very complex topic, and I could not describe the different causes any better than Wikipedia does, so if you want to learn more, you should check out their [article about color blindness](#).


Dichromacy



Original Color
11899541

Protanopia
10394266

Deuteranopia
11310740



Tritanopia
11964828

Trichromacy



Original Color
11899541

Protanomaly
10917784

Deuteranomaly
11507092

Tritanomaly
11964825

Monochromacy



Original Color
11899541

Achromatopsia
10329501

Achromatomaly
10918298

CSS Examples

Text

The CSS property to change the color of the text to Decimal 11899541 is called "color". The color property can be set on classes, ids or directly on the HTML element.

This example shows how text in the color #B59295 looks like.

```
.text, #text, p{  
    color:#B59295  
}
```

If you want to add a text shadow in that color use the text-shadow property, you can generate a text shadow directly with our [CSS Text Shadow Generator](#).

Here you see how black text with a 4 pixel #B59295 colored shadow looks like.

```
.shadow{ text-shadow: 4px 4px 2px #B59295
}
```

Border

The CSS property to change the border of an element to Decimal 11899541 is called "border". The border property can be set on classes, ids or directly on the HTML element.

This example shows the color as border, it can be applied via the CSS property "border" or "border-color".

```
.border, #border, table{ border:4px solid
#B59295 }
```

If only the border color should be changed use the property `border-color`.

```
.border{ border-color:#B59295 }
```

If you want to add a box shadow in that color use:

Here you see how a box with a 4 pixel #B59295 colored shadow looks like.

```
.boxshadow{ -moz-box-shadow:4px 4px 4px  
4px #B59295; -webkit-box-shadow:4px 4px  
4px 4px #B59295; box-shadow:4px 4px 4px  
4px #B59295 }
```

Background

The CSS property to change the background color of an element to Decimal 11899541 is called "background". The background property can be set on classes, ids or directly on the HTML element.

```
.background, #background, body{  
background:#B59295 }
```

If only the background color should be changed can be used:

```
.background{ background-color:#B59295 }
```

This example shows the color as background, it is applied via the CSS property "background".

To optimize and compress your CSS code, you can use our [online CSS compressor and optimizer](#) based on csstidy. If you want to create a linear or radial gradient as background or border, check our [CSS Gradient Generator](#).

Hey! You found this booklet interesting? Support Converting Colors with the new Membership Option!

The pro membership hides all ads, plus gives you double the colors in the color bucket, and more awesome pro features!

[Learn more, Memberships starting at \\$2.50/m!](#)

**Follow me
on Twitter!**

@ConvertingColor