

Converting Colors

Decimal(11900570)

Have a look what the booklet for
Decimal(11900570) contains.

Decimal(11900570)	3
<i>Conversions</i>	4
<i>Details</i>	6
<i>Harmonies</i>	11
<i>Previews</i>	23
<i>Color Blindness Simulation</i>	26
<i>CSS Examples</i>	29

Color

Decimal(11900570)

Conversions

Conversions Part 1

Format	Color
Hex	B5969A
RGB	181, 150, 154
RGB Percent	71%, 59%, 60%
CMY	0.2902, 0.4118, 0.3961
CMYK	0.00, 0.17, 0.15, 0.29
HSL	352°, 17%, 65%
HSV	352°, 17%, 71%
XYZ	35.7951, 33.9695, 35.2420
YIQ	159.7250, 17.1920, 7.8160

Conversions

Conversions Part 2

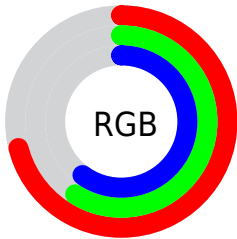
Format	Color
RYB	181, 150, 154
Decimal	11900570
CIELab	64.94, 12.20, 2.23
CIElCh	65, 12.406, 10.356
Yxy	33.9695, 0.3409, 0.3235
Android (android.graphics.Color)	4290090650 (0xFFB5969A)
YUV	159.7250, -2.8224, 18.6582
Hunter-Lab	58.2834, 7.6310, 4.9477

Details

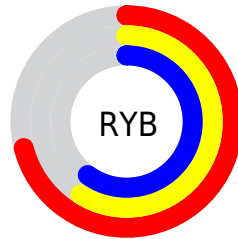
The Decimal color **11900570** is a light color, and the websafe version is hex **CC9999**. A complement of this color would be **9876913**, and the grayscale version is **10526880**.

A 20% lighter version of the original color is **15584464**, and **8414055** is the 20% darker color. If you saturate the color by 10%, you get **11895946**, and if you desaturate by 10%, it is **11905194**.

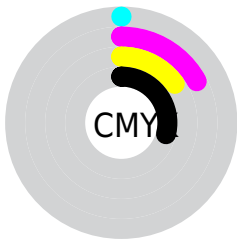
Distribution



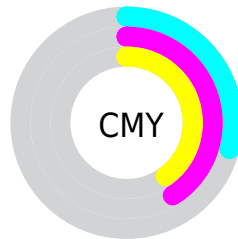
- Red (71%)
- Green (59%)
- Blue (60%)



- Red (71%)
- Yellow (59%)
- Blue (60%)



- Cyan (0%)
- Magenta (17%)
- Yellow (15%)
- Black (29%)



- Cyan (29%)
- Magenta (41%)
- Yellow (40%)

Brightness & Saturation Gradients

These gradients show how the Decimal color 11900570 changes by changing the brightness by 10 percent. The first figure shows a shift by +10% for each color and the second figure -10%.

Similar to the brightness gradients but the following saturation gradients show a change of the Decimal color 11900570 by changing the saturation by 10% instead.

 11900570

 11900570

16777215

 10124416

 15584464

 8414055

 16771309

 6703951

 5125176

 3612451

 2230285

 0

 11900570

 11900570

 11895946

 11905194

■ 11891322

■ 11909818

■ 11886699

■ 11914441

■ 11882075

■ 11919065

■ 11877451

■ 11923945

■ 11872571

■ 11927545

■ 11867948

■ 11927551

■ 11863324

■ 11862039

Harmonies

Analogous

The Analogous color harmony consists of three colors that are next to each other on the color wheel.



11507621



11900570



11835280

Triad

The Triadic color harmony groups three colors that are evenly spaced from another and form a triangle on the color wheel.



11900570



9871756



9085362

Complementary

The Complementary color scheme is a pair of colors which are on the opposite of each other on the color wheel.



11900570



9876913

Split Complementary

Split-complementary colors differ from the complementary color scheme. The scheme consists of three colors, the original color and two neighbors of the complement color.



8561579



11900570



9086102

Square

The Square scheme is like the rectangle color scheme, but the four colors are evenly spaced on the color wheel.



11900570



10722952



8561825



9870771

Rectangle

The Rectangle color scheme consists of four colors that form a rectangle on the color wheel.



11900570



11573643



8561825



8823472

Sweetspot

The Sweet Spot groups the original color and five complimentary colors.



11900570



15458272



11638453



7695983



16119285



7697781

Same Dimension

The Same Dimension uses a secret algorithm to generate beautiful new colors.



11900570



15448512



11903382



5853265



10027028



1703939

Inverse Universe

The Inverse Universe completely reimagines the original color for something new.



11900570



15448512



9874101



5853265



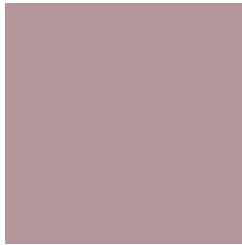
10027028



1703939

Previews

White Background



This preview shows how the Decimal color 11900570 looks on a white background.

Color Contrast Check

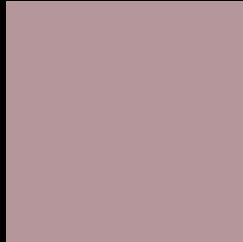
Large Text (above 18pt) WCAG AA × Fail

Any Text WCAG AA × Fail

Large Text (above 18pt) WCAG AAA × Fail

Any Text WCAG AAA × Fail

Black Background



This preview shows how the Decimal color 11900570 looks on a black background.

Color Contrast Check

Large Text (above 18pt) WCAG AA ✓ Pass

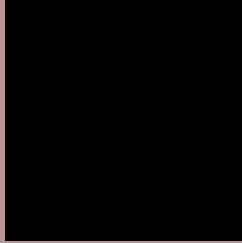
Any Text WCAG AA ✓ Pass

Large Text (above 18pt) WCAG AAA ✓ Pass

Any Text WCAG AAA ✓ Pass

If you want to check with other color combinations, try the [Color Contrast Checker](#).

Decimal 11900570 Background



This preview shows how black text looks on a background with the Decimal color 11900570.

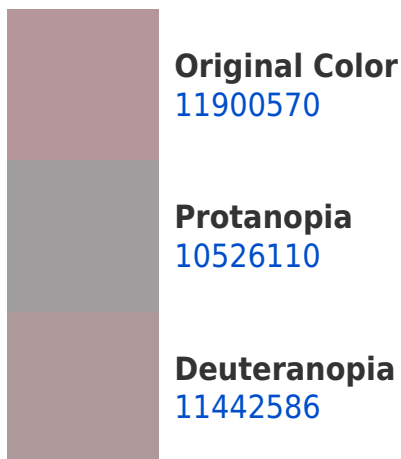



This preview shows how white text looks on a background with the Decimal color 11900570.

Color Blindness Simulation

Color vision deficiency is a very complex topic, and I could not describe the different causes any better than Wikipedia does, so if you want to learn more, you should check out their [article about color blindness](#).

Dichromacy





Tritanopia
11965857

Trichromacy



Original Color
11900570

Protanomaly
11049629

Deuteranomaly
11638938

Tritanomaly
11965854

Monochromacy



Original Color
11900570

Achromatopsia
10526880

Achromatomaly
11050142

CSS Examples

Text

The CSS property to change the color of the text to Decimal 11900570 is called "color". The color property can be set on classes, ids or directly on the HTML element.

This example shows how text in the color #B5969A looks like.

```
.text, #text, p{  
    color:#B5969A  
}
```

If you want to add a text shadow in that color use the text-shadow property, you can generate a text shadow directly with our [CSS Text Shadow Generator](#).

Here you see how black text with a 4 pixel #B5969A colored shadow looks like.

```
.shadow{ text-shadow: 4px 4px 2px #B5969A
}
```

Border

The CSS property to change the border of an element to Decimal 11900570 is called "border". The border property can be set on classes, ids or directly on the HTML element.

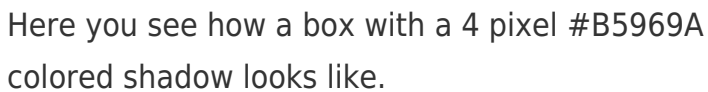
This example shows the color as border, it can be applied via the CSS property "border" or "border-color".

```
.border, #border, table{ border:4px solid
#B5969A }
```

If only the border color should be changed use the property `border-color`.

```
.border{ border-color:#B5969A }
```

If you want to add a box shadow in that color use:



Here you see how a box with a 4 pixel #B5969A colored shadow looks like.

```
.boxshadow{ -moz-box-shadow:4px 4px 4px  
4px #B5969A; -webkit-box-shadow:4px 4px  
4px 4px #B5969A; box-shadow:4px 4px 4px  
4px #B5969A }
```

Background

The CSS property to change the background color of an element to Decimal 11900570 is called "background". The background property can be set on classes, ids or directly on the HTML element.

```
.background, #background, body{  
background:#B5969A }
```

If only the background color should be changed can be used:

```
.background{ background-color:#B5969A }
```

This example shows the color as background, it is applied via the CSS property "background".

To optimize and compress your CSS code, you can use our [online CSS compressor and optimizer](#) based on csstidy. If you want to create a linear or radial gradient as background or border, check our [CSS Gradient Generator](#).

Hey! You found this booklet interesting? Support Converting Colors with the new Membership Option!

The pro membership hides all ads, plus gives you double the colors in the color bucket, and more awesome pro features!

[Learn more, Memberships starting at \\$2.50/m!](#)

**Follow me
on Twitter!**

@ConvertingColor