

# Converting Colors

Decimal(11900791)

Have a look what the booklet for  
Decimal(11900791) contains.

<b>Decimal(11900791)</b> .....	3
<i><b>Conversions</b></i> .....	4
<i><b>Details</b></i> .....	6
<i><b>Harmonies</b></i> .....	11
<i><b>Previews</b></i> .....	23
<i><b>Color Blindness Simulation</b></i> .....	26
<i><b>CSS Examples</b></i> .....	29

# **Color**

**Decimal(11900791)**

# Conversions

## Conversions Part 1

Format	Color
Hex	B59777
RGB	181, 151, 119
RGB Percent	71%, 59%, 47%
CMY	0.2902, 0.4078, 0.5333
CMYK	0.00, 0.17, 0.34, 0.29
HSL	31°, 30%, 59%
HSV	31°, 34%, 71%
XYZ	33.4524, 33.2889, 22.1150
YIQ	156.3220, 28.1520, -3.5920

# Conversions

## Conversions Part 2

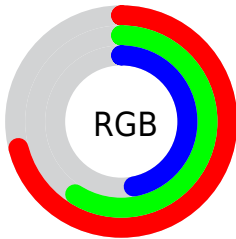
<b>Format</b>	<b>Color</b>
<b>RYB</b>	177, 181, 119
Decimal	11900791
CIELab	64.39, 6.49, 21.05
CIElCh	64, 22.026, 72.853
Yxy	33.2889, 0.3765, 0.3746
Android (android.graphics.Color)	4290090871 (0xFFB59777)
YUV	156.3220, -18.3997, 21.6426
Hunter-Lab	57.6965, 2.5254, 17.6618

# Details

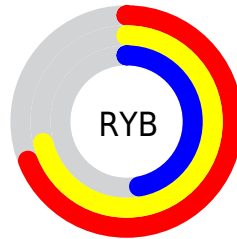
The Decimal color **11900791** is a light color, and the websafe version is hex **CC9966**. A complement of this color would be **7837109**, and the grayscale version is **10263708**.

A 20% lighter version of the original color is **15650219**, and **8348742** is the 20% darker color. If you saturate the color by 10%, you get **11898469**, and if you desaturate by 10%, it is **11903113**.

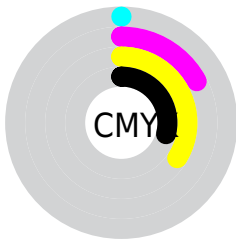
# Distribution



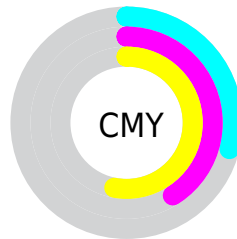
- Red (71%)
- Green (59%)
- Blue (47%)



- Red (69%)
- Yellow (71%)
- Blue (47%)



- Cyan (0%)
- Magenta (17%)
- Yellow (34%)
- Black (29%)



- Cyan (29%)
- Magenta (41%)
- Yellow (53%)

# Brightness & Saturation Gradients

These gradients show how the Decimal color 11900791 changes by changing the brightness by 10 percent. The first figure shows a shift by +10% for each color and the second figure -10%.

Similar to the brightness gradients but the following saturation gradients show a change of the Decimal color 11900791 by changing the saturation by 10% instead.





11900791



11900791

16777215



10124638



15650219



8348742



16771527



6638640



16777187



4994586



3481601



1968640



0



11900791



11900791



11898469



11903113

■ 11896147

■ 11905435

■ 11894081

■ 11907501

■ 11891759

■ 11909823

■ 11889437

■ 11912146

■ 11887114

■ 11914468

■ 11885824

■ 11916534

■ 11918847

■ 11921151

# Harmonies

## Analogous

The Analogous color harmony consists of three colors that are next to each other on the color wheel.



12685698



11900791



10657398

# Triad

The Triadic color harmony groups three colors that are evenly spaced from another and form a triangle on the color wheel.



11900791



6727588



11179193

# Complementary

The Complementary color scheme is a pair of colors which are on the opposite of each other on the color wheel.



11900791



7837109

# Split Complementary

Split-complementary colors differ from the complementary color scheme. The scheme consists of three colors, the original color and two neighbors of the complement color.



9477058



11900791



6661814

# Square

The Square scheme is like the rectangle color scheme, but the four colors are evenly spaced on the color wheel.



11900791



7775888



7774657



12357544

# Rectangle

The Rectangle color scheme consists of four colors that form a rectangle on the color wheel.



11900791



9675131



7774657



10655421

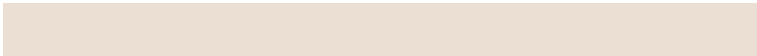


# Sweetspot

The Sweet Spot groups the original color and five complimentary colors.



11900791



15458259



11892630



7695975



16119285



7697781



# Same Dimension

The Same Dimension uses a secret algorithm to generate beautiful new colors.



11900791



15449226



11908471



5854544



10047232



1707264



# Inverse Universe

The Inverse Universe completely reimagines the original color for something new.



7837109



9091563



7829429



5264729



19097

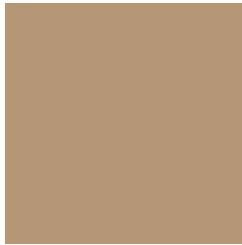


3098



# Previews

## White Background



This preview shows how the Decimal color 11900791 looks on a white background.

## Color Contrast Check

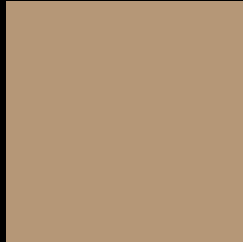
Large Text (above 18pt) WCAG AA × Fail

Any Text WCAG AA × Fail

Large Text (above 18pt) WCAG AAA × Fail

Any Text WCAG AAA × Fail

# Black Background



This preview shows how the Decimal color 11900791 looks on a black background.

## Color Contrast Check

Large Text (above 18pt) WCAG AA ✓ Pass

Any Text WCAG AA ✓ Pass

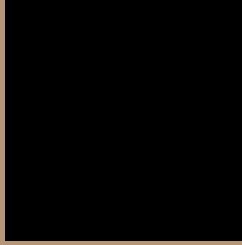
Large Text (above 18pt) WCAG AAA ✓ Pass

Any Text WCAG AAA ✓ Pass

If you want to check with other color combinations, try the [Color Contrast Checker](#).



## Decimal 11900791 Background



This preview shows how black text looks on a background with the Decimal color 11900791.



This preview shows how white text looks on a background with the Decimal color 11900791.

# Color Blindness Simulation

Color vision deficiency is a very complex topic, and I could not describe the different causes any better than Wikipedia does, so if you want to learn more, you should check out their [article about color blindness](#).

## Dichromacy





**Tritanopia**  
12161693

# Trichromacy



**Original Color**  
11900791

**Protanomaly**  
11311736

**Deuteranomaly**  
12031607

**Tritanomaly**  
12096655

# Monochromacy



**Original Color**  
11900791

**Achromatopsia**  
10263708

**Achromatomaly**  
10853007

# CSS Examples

## Text

The CSS property to change the color of the text to Decimal 11900791 is called "color". The color property can be set on classes, ids or directly on the HTML element.

This example shows how text in the color #B59777 looks like.

```
.text, #text, p{  
  color:#B59777  
}
```

If you want to add a text shadow in that color use the text-shadow property, you can generate a text shadow directly with our [CSS Text Shadow Generator](#).

Here you see how black text with a 4 pixel #B59777 colored shadow looks like.

```
.shadow{ text-shadow: 4px 4px 2px #B59777
}
```

## Border

The CSS property to change the border of an element to Decimal 11900791 is called "border". The border property can be set on classes, ids or directly on the HTML element.

This example shows the color as border, it can be applied via the CSS property "border" or "border-color".

```
.border, #border, table{ border:4px solid
#B59777 }
```

If only the border color should be changed use the property `border-color`.

```
.border{ border-color:#B59777 }
```

If you want to add a box shadow in that color use:

Here you see how a box with a 4 pixel #B59777 colored shadow looks like.

```
.boxshadow{ -moz-box-shadow:4px 4px 4px  
4px #B59777; -webkit-box-shadow:4px 4px  
4px 4px #B59777; box-shadow:4px 4px 4px  
4px #B59777 }
```

# Background

The CSS property to change the background color of an element to Decimal 11900791 is called "background". The background property can be set on classes, ids or directly on the HTML element.

```
.background, #background, body{  
background:#B59777 }
```

If only the background color should be changed can be used:

```
.background{ background-color:#B59777 }
```

This example shows the color as background, it is applied via the CSS property "background".

To optimize and compress your CSS code, you can use our [online CSS compressor and optimizer](#) based on csstidy. If you want to create a linear or radial gradient as background or border, check our [CSS Gradient Generator](#).



Hey! You found this booklet interesting? Support Converting Colors with the new Membership Option!

The pro membership hides all ads, plus gives you double the colors in the color bucket, and more awesome pro features!

**[Learn more, Memberships starting at \\$2.50/m!](#)**

**Follow me  
on Twitter!**

@ConvertingColor