

Converting Colors

Decimal(11901334)

Have a look what the booklet for
Decimal(11901334) contains.

Decimal(11901334)	3
<i>Conversions</i>	4
<i>Details</i>	6
<i>Harmonies</i>	11
<i>Previews</i>	23
<i>Color Blindness Simulation</i>	26
<i>CSS Examples</i>	29

Color

Decimal(11901334)

Conversions

Conversions Part 1

Format	Color
Hex	B59996
RGB	181, 153, 150
RGB Percent	71%, 60%, 59%
CMY	0.2902, 0.4000, 0.4118
CMYK	0.00, 0.15, 0.17, 0.29
HSL	6°, 17%, 65%
HSV	6°, 17%, 71%
XYZ	35.9523, 34.8082, 33.6779
YIQ	161.0300, 17.6510, 5.0030

Conversions

Conversions Part 2

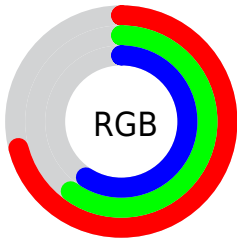
Format	Color
RYB	181, 153, 150
Decimal	11901334
CIELab	65.60, 9.88, 5.43
CIElCh	66, 11.278, 28.791
Yxy	34.8082, 0.3442, 0.3333
Android (android.graphics.Color)	4290091414 (0xFFB59996)
YUV	161.0300, -5.4378, 17.5137
Hunter-Lab	58.9985, 5.5264, 7.4546

Details

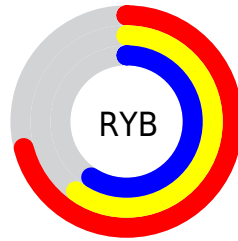
The Decimal color **11901334** is a light color, and the websafe version is hex **CC9999**. A complement of this color would be **9876149**, and the grayscale version is **10592673**.

A 20% lighter version of the original color is **15585228**, and **8414819** is the 20% darker color. If you saturate the color by 10%, you get **11897220**, and if you desaturate by 10%, it is **11905448**.

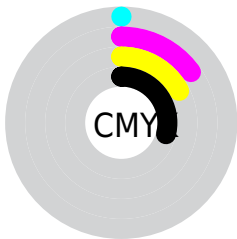
Distribution



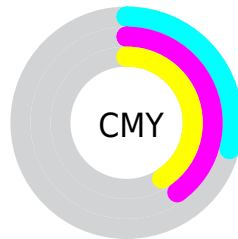
- Red (71%)
- Green (60%)
- Blue (59%)



- Red (71%)
- Yellow (60%)
- Blue (59%)



- Cyan (0%)
- Magenta (15%)
- Yellow (17%)
- Black (29%)



- Cyan (29%)
- Magenta (40%)
- Yellow (41%)

Brightness & Saturation Gradients

These gradients show how the Decimal color 11901334 changes by changing the brightness by 10 percent. The first figure shows a shift by +10% for each color and the second figure -10%.

Similar to the brightness gradients but the following saturation gradients show a change of the Decimal color 11901334 by changing the saturation by 10% instead.

 11901334

 11901334

16777215

 10125180

 15585228

 8414819

 16772328

 6704715

 5125941

 3613216

 2231304

 0

 11901334

 11901334

 11897220

 11905448

■ 11892850

■ 11909818

■ 11888736

■ 11913932

■ 11884622

■ 11918046

■ 11880252

■ 11922417

■ 11876137

■ 11926527

■ 11872023

■ 11927551

■ 11867653

■ 11866624

Harmonies

Analogous

The Analogous color harmony consists of three colors that are next to each other on the color wheel.



11770272



11901334



11639694

Triad

The Triadic color harmony groups three colors that are evenly spaced from another and form a triangle on the color wheel.



11901334



9544853



9740467

Complementary

The Complementary color scheme is a pair of colors which are on the opposite of each other on the color wheel.



11901334



9876149

Split Complementary

Split-complementary colors differ from the complementary color scheme. The scheme consists of three colors, the original color and two neighbors of the complement color.



9085872



11901334



9020830

Square

The Square scheme is like the rectangle color scheme, but the four colors are evenly spaced on the color wheel.



11901334



10330766



8824233



10591665

Rectangle

The Rectangle color scheme consists of four colors that form a rectangle on the color wheel.



11901334



11246988



8824233



9478579

Sweetspot

The Sweet Spot groups the original color and five complimentary colors.



11901334



15458527



11900594



7696238



16119285



7697781

Same Dimension

The Same Dimension uses a secret algorithm to generate beautiful new colors.



11901334



15449785



11905174



5853520



10030848



1704448

Inverse Universe

The Inverse Universe completely reimagines the original color for something new.



9876149



12183275



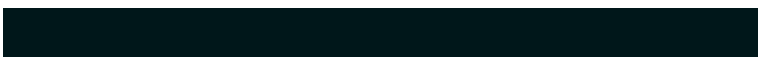
9872309



5265497



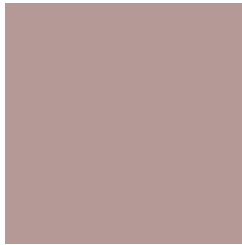
35481



5914

Previews

White Background



This preview shows how the Decimal color 11901334 looks on a white background.

Color Contrast Check

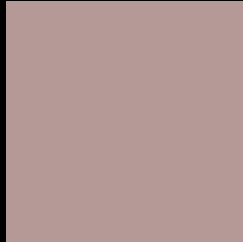
Large Text (above 18pt) WCAG AA × Fail

Any Text WCAG AA × Fail

Large Text (above 18pt) WCAG AAA × Fail

Any Text WCAG AAA × Fail

Black Background



This preview shows how the Decimal color 11901334 looks on a black background.

Color Contrast Check

Large Text (above 18pt) WCAG AA ✓ Pass

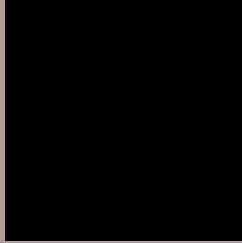
Any Text WCAG AA ✓ Pass

Large Text (above 18pt) WCAG AAA ✓ Pass

Any Text WCAG AAA ✓ Pass

If you want to check with other color combinations, try the [Color Contrast Checker](#).

Decimal 11901334 Background



This preview shows how black text looks on a background with the Decimal color 11901334.



This preview shows how white text looks on a background with the Decimal color 11901334.

Color Blindness Simulation

Color vision deficiency is a very complex topic, and I could not describe the different causes any better than Wikipedia does, so if you want to learn more, you should check out their [article about color blindness](#).


Dichromacy



Original Color
11901334

Protanopia
10788761

Deuteranopia
11704982



Tritanopia
12031907

Trichromacy



Original Color
11901334

Protanomaly
11181464

Deuteranomaly
11770518

Tritanomaly
11966622

Monochromacy



Original Color
11901334

Achromatopsia
10592673

Achromatomaly
11050653

CSS Examples

Text

The CSS property to change the color of the text to Decimal 11901334 is called "color". The color property can be set on classes, ids or directly on the HTML element.

This example shows how text in the color #B59996 looks like.

```
.text, #text, p{  
    color:#B59996  
}
```

If you want to add a text shadow in that color use the text-shadow property, you can generate a text shadow directly with our [CSS Text Shadow Generator](#).

Here you see how black text with a 4 pixel #B59996 colored shadow looks like.

```
.shadow{ text-shadow: 4px 4px 2px #B59996
}
```

Border

The CSS property to change the border of an element to Decimal 11901334 is called "border". The border property can be set on classes, ids or directly on the HTML element.

This example shows the color as border, it can be applied via the CSS property "border" or "border-color".

```
.border, #border, table{ border:4px solid
#B59996 }
```

If only the border color should be changed use the property `border-color`.

```
.border{ border-color:#B59996 }
```

If you want to add a box shadow in that color use:

Here you see how a box with a 4 pixel #B59996 colored shadow looks like.

```
.boxshadow{ -moz-box-shadow:4px 4px 4px  
4px #B59996; -webkit-box-shadow:4px 4px  
4px 4px #B59996; box-shadow:4px 4px 4px  
4px #B59996 }
```

Background

The CSS property to change the background color of an element to Decimal 11901334 is called "background". The background property can be set on classes, ids or directly on the HTML element.

```
.background, #background, body{  
background:#B59996 }
```

If only the background color should be changed can be used:

```
.background{ background-color:#B59996 }
```

This example shows the color as background, it is applied via the CSS property "background".

To optimize and compress your CSS code, you can use our [online CSS compressor and optimizer](#) based on csstidy. If you want to create a linear or radial gradient as background or border, check our [CSS Gradient Generator](#).

Hey! You found this booklet interesting? Support Converting Colors with the new Membership Option!

The pro membership hides all ads, plus gives you double the colors in the color bucket, and more awesome pro features!

[Learn more, Memberships starting at \\$2.50/m!](#)

**Follow me
on Twitter!**

@ConvertingColor