

# Converting Colors

Decimal(11959905)

Have a look what the booklet for  
Decimal(11959905) contains.

<b>Decimal(11959905)</b> .....	3
<b><i>Conversions</i></b> .....	4
<b><i>Details</i></b> .....	6
<b><i>Harmonies</i></b> .....	11
<b><i>Previews</i></b> .....	23
<b><i>Color Blindness Simulation</i></b> .....	26
<b><i>CSS Examples</i></b> .....	29

# Color

**Decimal(11959905)**

# Conversions

## Conversions Part 1

<b>Format</b>	<b>Color</b>
Hex	B67E61
RGB	182, 126, 97
RGB Percent	71%, 49%, 38%
CMY	0.2863, 0.5059, 0.6196
CMYK	0.00, 0.31, 0.47, 0.29
HSL	20°, 37%, 55%
HSV	20°, 47%, 71%
XYZ	28.9099, 25.7299, 14.7519
YIQ	139.4380, 42.6850, 2.8530

# Conversions

## Conversions Part 2

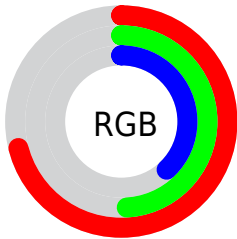
<b>Format</b>	<b>Color</b>
<b>R<sub>YB</sub></b>	182, 141, 97
Decimal	11959905
CIE <sub>Lab</sub>	57.78, 18.24, 24.49
CIE <sub>LCh</sub>	58, 30.534, 53.313
Yxy	25.7299, 0.4166, 0.3708
Android (android.graphics.Color)	4290149985 (0xFFB67E61)
YUV	139.4380, -20.9219, 37.3269
Hunter-Lab	50.7246, 12.9660, 18.2643

# Details

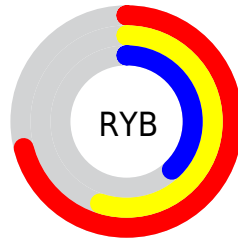
The Decimal color **11959905** is a dark color, and the websafe version is hex **CC9966**. A complement of this color would be **6396342**, and the grayscale version is **9211020**.

A 20% lighter version of the original color is **15774612**, and **8342834** is the 20% darker color. If you saturate the color by 10%, you get **11956815**, and if you desaturate by 10%, it is **11962995**.

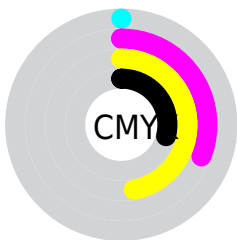
# Distribution



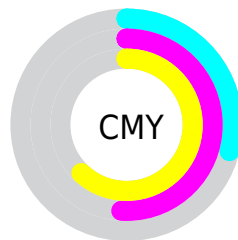
- Red (71%)
- Green (49%)
- Blue (38%)



- Red (71%)
- Yellow (55%)
- Blue (38%)



- Cyan (0%)
- Magenta (31%)
- Yellow (47%)
- Black (29%)




- Cyan (29%)
- Magenta (51%)
- Yellow (62%)

# Brightness & Saturation Gradients

These gradients show how the Decimal color 11959905 changes by changing the brightness by 10 percent. The first figure shows a shift by +10% for each color and the second figure -10%.

Similar to the brightness gradients but the following saturation gradients show a change of the Decimal color 11959905 by changing the saturation by 10% instead.



 11959905

 11959905

16777215

 10118473

 15774612

 8342834

 16764591

 6567452

 16772042

 4857861

 16777190

 3213824

 1310720

 0

 11959905

 11959905

 11956815

 11962995

■ 11953725

■ 11966085

■ 11950634

■ 11969176

■ 11947544

■ 11972266

■ 11944454

■ 11975356

■ 11943424

■ 11978446

■ 11981536

■ 11984627

■ 11987711

# Harmonies

## Analogous

The Analogous color harmony consists of three colors that are next to each other on the color wheel.



12547959



11959905



10651478

# Triad

The Triadic color harmony groups three colors that are evenly spaced from another and form a triangle on the color wheel.



11959905



4692356



8816316

# Complementary

The Complementary color scheme is a pair of colors which are on the opposite of each other on the color wheel.



11959905



6396342

# Split Complementary

Split-complementary colors differ from the complementary color scheme. The scheme consists of three colors, the original color and two neighbors of the complement color.



6000575



11959905



2726303

# Square

The Square scheme is like the rectangle color scheme, but the four colors are evenly spaced on the color wheel.



11959905



6919786



3315381



10976683

# Rectangle

The Rectangle color scheme consists of four colors that form a rectangle on the color wheel.



11959905



9538902



3315381



7899582



# Sweetspot

The Sweet Spot groups the original color and five complimentary colors.



11959905



15587276



11952538



7891555



16250871



7895160



# Same Dimension

The Same Dimension uses a secret algorithm to generate beautiful new colors.



11959905



15570536



11970657



6051411



10237184



1837568



# Inverse Universe

The Inverse Universe completely reimagines the original color for something new.



6396342



6865133



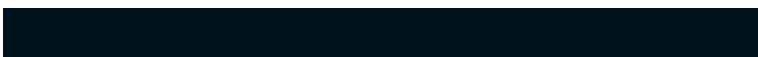
6385590



5462364



26268



4636



# Previews

## White Background



This preview shows how the Decimal color 11959905 looks on a white background.

## Color Contrast Check

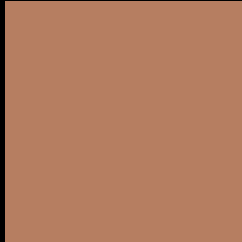
Large Text (above 18pt) WCAG AA ✓ Pass

Any Text WCAG AA × Fail

Large Text (above 18pt) WCAG AAA × Fail

Any Text WCAG AAA × Fail

# Black Background



This preview shows how the Decimal color 11959905 looks on a black background.

## Color Contrast Check

Large Text (above 18pt) WCAG AA ✓ Pass

Any Text WCAG AA ✓ Pass

Large Text (above 18pt) WCAG AAA ✓ Pass

Any Text WCAG AAA × Fail

If you want to check with other color combinations, try the [Color Contrast Checker](#).



## Decimal 11959905 Background



This preview shows how black text looks on a background with the Decimal color 11959905.



This preview shows how white text looks on a background with the Decimal color 11959905.

# Color Blindness Simulation

Color vision deficiency is a very complex topic, and I could not describe the different causes any better than Wikipedia does, so if you want to learn more, you should check out their [article about color blindness](#).

## Dichromacy





# Trichromacy



**Original Color**  
11959905

**Protanomaly**  
10585701

**Deuteranomaly**  
11305568

**Tritanomaly**  
12090231

# Monochromacy



**Original Color**  
11959905

**Achromatopsia**  
9145227

**Achromatomaly**  
10192508

# CSS Examples

## Text

The CSS property to change the color of the text to Decimal 11959905 is called "color". The color property can be set on classes, ids or directly on the HTML element.

This example shows how text in the color #B67E61 looks like.

```
.text, #text, p{  
    color:#B67E61  
}
```

If you want to add a text shadow in that color use the text-shadow property, you can generate a text shadow directly with our [CSS Text Shadow Generator](#).

Here you see how black text with a 4 pixel #B67E61 colored shadow looks like.

```
.shadow{ text-shadow: 4px 4px 2px #B67E61  
}
```

## Border

The CSS property to change the border of an element to Decimal 11959905 is called "border". The border property can be set on classes, ids or directly on the HTML element.

This example shows the color as border, it can be applied via the CSS property "border" or "border-color".

```
.border, #border, table{ border:4px solid  
#B67E61 }
```

If only the border color should be changed use the property `border-color`.

```
.border{ border-color:#B67E61 }
```

If you want to add a box shadow in that color use:

Here you see how a box with a 4 pixel #B67E61 colored shadow looks like.

```
.boxshadow{ -moz-box-shadow:4px 4px 4px  
4px #B67E61; -webkit-box-shadow:4px 4px  
4px 4px #B67E61; box-shadow:4px 4px 4px  
4px #B67E61 }
```

# Background

The CSS property to change the background color of an element to Decimal 11959905 is called "background". The background property can be set on classes, ids or directly on the HTML element.

```
.background, #background, body{  
background:#B67E61 }
```

If only the background color should be changed can be used:

```
.background{ background-color:#B67E61 }
```

This example shows the color as background, it is applied via the CSS property "background".

To optimize and compress your CSS code, you can use our [online CSS compressor and optimizer](#) based on csstidy. If you want to create a linear or radial gradient as background or border, check our [CSS Gradient Generator](#).



Hey! You found this booklet interesting? Support Converting Colors with the new Membership Option!

The pro membership hides all ads, plus gives you double the colors in the color bucket, and more awesome pro features!

**[Learn more, Memberships starting at \\$2.50/m!](#)**

**Follow me  
on Twitter!**

@ConvertingColor