

Converting Colors

Decimal(11960168)

Have a look what the booklet for
Decimal(11960168) contains.

Decimal(11960168)	3
<i>Conversions</i>	4
<i>Details</i>	6
<i>Harmonies</i>	11
<i>Previews</i>	23
<i>Color Blindness Simulation</i>	26
<i>CSS Examples</i>	29

Color

Decimal(11960168)

Conversions

Conversions Part 1

Format	Color
Hex	B67F68
RGB	182, 127, 104
RGB Percent	71%, 50%, 41%
CMY	0.2863, 0.5020, 0.5922
CMYK	0.00, 0.30, 0.43, 0.29
HSL	18°, 35%, 56%
HSV	18°, 43%, 71%
XYZ	29.3795, 26.1233, 16.5905
YIQ	140.8230, 40.1630, 4.5070

Conversions

Conversions Part 2

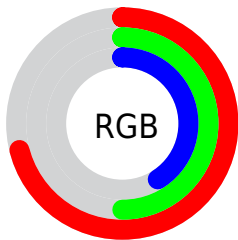
Format	Color
RYB	182, 137, 104
Decimal	11960168
CIELab	58.15, 18.44, 21.03
CIELCh	58, 27.969, 48.753
Yxy	26.1233, 0.4075, 0.3624
Android (android.graphics.Color)	4290150248 (0xFFB67F68)
YUV	140.8230, -18.1537, 36.1122
Hunter-Lab	51.1110, 13.1607, 16.5322

Details

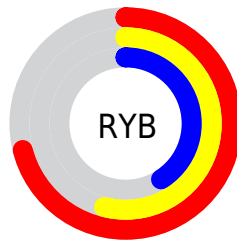
The Decimal color **11960168** is a dark color, and the websafe version is hex **996666**. A complement of this color would be **6856630**, and the grayscale version is **9276813**.

A 20% lighter version of the original color is **15774875**, and **8343097** is the 20% darker color. If you saturate the color by 10%, you get **11956822**, and if you desaturate by 10%, it is **11963514**.

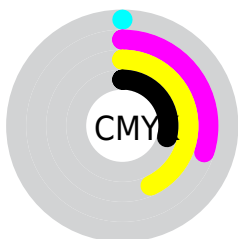
Distribution



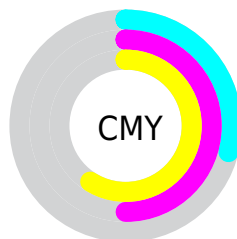
- Red (71%)
- Green (50%)
- Blue (41%)



- Red (71%)
- Yellow (54%)
- Blue (41%)



- Cyan (0%)
- Magenta (30%)
- Yellow (43%)
- Black (29%)



- Cyan (29%)
- Magenta (50%)
- Yellow (59%)

Brightness & Saturation Gradients

These gradients show how the Decimal color 11960168 changes by changing the brightness by 10 percent. The first figure shows a shift by +10% for each color and the second figure -10%.

Similar to the brightness gradients but the following saturation gradients show a change of the Decimal color 11960168 by changing the saturation by 10% instead.

 11960168

 11960168

16777215

 10118736

 15774875

 8343097

 16765110

 6567459

 16772306

 4857870

 16777198

 3279616

 1441792

 0

 11960168

 11960168

 11956822

 11963514

11953476

11966860

11950385

11970207

11947039

11973297

11943693

11976643

11941376

11979989

11983335

11986682

11990015

Harmonies

Analogous

The Analogous color harmony consists of three colors that are next to each other on the color wheel.



12417661



11960168



10848092

Triad

The Triadic color harmony groups three colors that are evenly spaced from another and form a triangle on the color wheel.



11960168



5544321



8554938

Complementary

The Complementary color scheme is a pair of colors which are on the opposite of each other on the color wheel.



11960168



6856630

Split Complementary

Split-complementary colors differ from the complementary color scheme. The scheme consists of three colors, the original color and two neighbors of the complement color.



6132155



11960168



3971483

Square

The Square scheme is like the rectangle color scheme, but the four colors are evenly spaced on the color wheel.



11960168



7443819



4102064



10649772

Rectangle

The Rectangle color scheme consists of four colors that form a rectangle on the color wheel.



11960168



9866587



4102064



7769276

Sweetspot

The Sweet Spot groups the original color and five complimentary colors.



11960168



15587278



11954336



7891557



16250871



7895160

Same Dimension

The Same Dimension uses a secret algorithm to generate beautiful new colors.



11960168



15571060



11969896



6051155



10235392



1837056

Inverse Universe

The Inverse Universe completely reimagines the original color for something new.



6856630



7653869



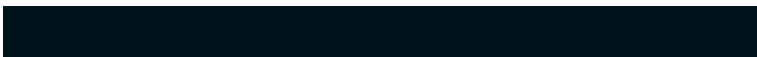
6846902



5462364



28316



5148

Previews

White Background



This preview shows how the Decimal color 11960168 looks on a white background.

Color Contrast Check

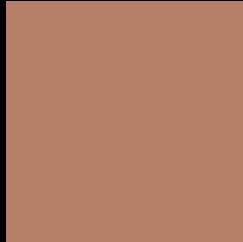
Large Text (above 18pt) WCAG AA ✓ Pass

Any Text WCAG AA ✗ Fail

Large Text (above 18pt) WCAG AAA ✗ Fail

Any Text WCAG AAA ✗ Fail

Black Background



This preview shows how the Decimal color 11960168 looks on a black background.

Color Contrast Check

Large Text (above 18pt) WCAG AA ✓ Pass

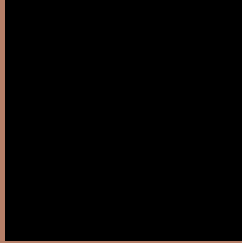
Any Text WCAG AA ✓ Pass

Large Text (above 18pt) WCAG AAA ✓ Pass

Any Text WCAG AAA × Fail

If you want to check with other color combinations, try the [Color Contrast Checker](#).

Decimal 11960168 Background



This preview shows how black text looks on a background with the Decimal color 11960168.



This preview shows how white text looks on a background with the Decimal color 11960168.

Color Blindness Simulation

Color vision deficiency is a very complex topic, and I could not describe the different causes any better than Wikipedia does, so if you want to learn more, you should check out their [article about color blindness](#).


Dichromacy



Original Color
11960168

Protanopia
9800814

Deuteranopia
10913383



Tritanopia
12155780

Trichromacy



Original Color
11960168

Protanomaly
10585964

Deuteranomaly
11305831

Tritanomaly
12090490

Monochromacy



Original Color
11960168

Achromatopsia
9276813

Achromatomaly
10258560

CSS Examples

Text

The CSS property to change the color of the text to Decimal 11960168 is called "color". The color property can be set on classes, ids or directly on the HTML element.

This example shows how text in the color #B67F68 looks like.

```
.text, #text, p{  
  color:#B67F68  
}
```

If you want to add a text shadow in that color use the text-shadow property, you can generate a text shadow directly with our [CSS Text Shadow Generator](#).

Here you see how black text with a 4 pixel #B67F68 colored shadow looks like.

```
.shadow{ text-shadow: 4px 4px 2px #B67F68
}
```

Border

The CSS property to change the border of an element to Decimal 11960168 is called "border". The border property can be set on classes, ids or directly on the HTML element.

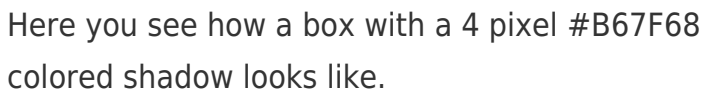
This example shows the color as border, it can be applied via the CSS property "border" or "border-color".

```
.border, #border, table{ border:4px solid
#B67F68 }
```

If only the border color should be changed use the property `border-color`.

```
.border{ border-color:#B67F68 }
```

If you want to add a box shadow in that color use:



Here you see how a box with a 4 pixel #B67F68 colored shadow looks like.

```
.boxshadow{ -moz-box-shadow:4px 4px 4px  
4px #B67F68; -webkit-box-shadow:4px 4px  
4px 4px #B67F68; box-shadow:4px 4px 4px  
4px #B67F68 }
```

Background

The CSS property to change the background color of an element to Decimal 11960168 is called "background". The background property can be set on classes, ids or directly on the HTML element.

```
.background, #background, body{  
background:#B67F68 }
```

If only the background color should be changed can be used:

```
.background{ background-color:#B67F68 }
```

This example shows the color as background, it is applied via the CSS property "background".

To optimize and compress your CSS code, you can use our [online CSS compressor and optimizer](#) based on csstidy. If you want to create a linear or radial gradient as background or border, check our [CSS Gradient Generator](#).

Hey! You found this booklet interesting? Support Converting Colors with the new Membership Option!

The pro membership hides all ads, plus gives you double the colors in the color bucket, and more awesome pro features!

[Learn more, Memberships starting at \\$2.50/m!](#)

**Follow me
on Twitter!**

@ConvertingColor