

# Converting Colors

Decimal(11960421)

Have a look what the booklet for  
Decimal(11960421) contains.

<b>Decimal(11960421)</b> .....	3
<b><i>Conversions</i></b> .....	4
<b><i>Details</i></b> .....	6
<b><i>Harmonies</i></b> .....	11
<b><i>Previews</i></b> .....	23
<b><i>Color Blindness Simulation</i></b> .....	26
<b><i>CSS Examples</i></b> .....	29

**Color**

**Decimal(11960421)**

# Conversions

## Conversions Part 1

<b>Format</b>	<b>Color</b>
Hex	B68065
RGB	182, 128, 101
RGB Percent	71%, 50%, 40%
CMY	0.2863, 0.4980, 0.6039
CMYK	0.00, 0.30, 0.45, 0.29
HSL	20°, 36%, 55%
HSV	20°, 45%, 71%
XYZ	29.3595, 26.3230, 15.8454
YIQ	141.0680, 40.8510, 3.0510

# Conversions

## Conversions Part 2

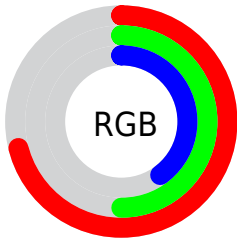
<b>Format</b>	<b>Color</b>
<b>R<sub>YB</sub></b>	182, 142, 101
Decimal	11960421
CIE Lab	58.34, 17.55, 22.98
CIE LCh	58, 28.914, 52.626
Yxy	26.3230, 0.4105, 0.3680
Android (android.graphics.Color)	4290150501 (0xFFB68065)
YUV	141.0680, -19.7535, 35.8974
Hunter-Lab	51.3060, 12.3602, 17.6030

# Details

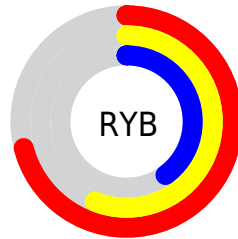
The Decimal color **11960421** is a dark color, and the websafe version is hex **CC9966**. A complement of this color would be **6658998**, and the grayscale version is **9276813**.

A 20% lighter version of the original color is **15775128**, and **8343350** is the 20% darker color. If you saturate the color by 10%, you get **11957331**, and if you desaturate by 10%, it is **11963511**.

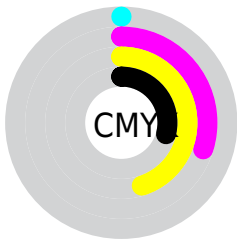
# Distribution



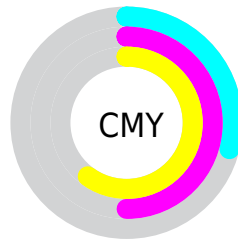
- Red (71%)
- Green (50%)
- Blue (40%)



- Red (71%)
- Yellow (56%)
- Blue (40%)



- Cyan (0%)
- Magenta (30%)
- Yellow (45%)
- Black (29%)



- Cyan (29%)
- Magenta (50%)
- Yellow (60%)

# Brightness & Saturation Gradients

These gradients show how the Decimal color 11960421 changes by changing the brightness by 10 percent. The first figure shows a shift by +10% for each color and the second figure -10%.

Similar to the brightness gradients but the following saturation gradients show a change of the Decimal color 11960421 by changing the saturation by 10% instead.



 11960421

 11960421

16777215

 10118989

 15775128

 8343350

 16765363

 6567712

 16772559

 4858122

 16777195

 3214336

 1441792

 0

 11960421

 11960421

 11957331

 11963511

11954241

11966601

11951150

11969692

11947804

11973038

11944714

11976128

11943168

11979218

11982308

11985399

11988479

# Harmonies

## Analogous

The Analogous color harmony consists of three colors that are next to each other on the color wheel.



12483194



11960421



10717530

# Triad

The Triadic color harmony groups three colors that are evenly spaced from another and form a triangle on the color wheel.



11960421



5151365



8882363

# Complementary

The Complementary color scheme is a pair of colors which are on the opposite of each other on the color wheel.



11960421



6658998

# Split Complementary

Split-complementary colors differ from the complementary color scheme. The scheme consists of three colors, the original color and two neighbors of the complement color.



6328766



11960421



3578527

# Square

The Square scheme is like the rectangle color scheme, but the four colors are evenly spaced on the color wheel.



11960421



7182189



3970996



10911659

# Rectangle

The Rectangle color scheme consists of four colors that form a rectangle on the color wheel.



11960421



9670234



3970996



8031165



# Sweetspot

The Sweet Spot groups the original color and five complimentary colors.



11960421



15587790



11953563



7891813



16250871



7895160



# Same Dimension

The Same Dimension uses a secret algorithm to generate beautiful new colors.



11960421



15571311



11970917



6051411



10236928



1837312



# Inverse Universe

The Inverse Universe completely reimagines the original color for something new.



6658998



7324653



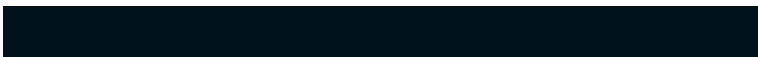
6648758



5462364



26780



4892



# Previews

## White Background



This preview shows how the Decimal color 11960421 looks on a white background.

## Color Contrast Check

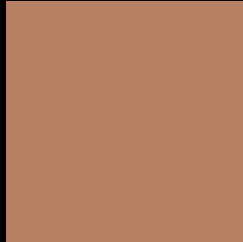
Large Text (above 18pt) WCAG AA ✓ Pass

Any Text WCAG AA × Fail

Large Text (above 18pt) WCAG AAA × Fail

Any Text WCAG AAA × Fail

# Black Background



This preview shows how the Decimal color 11960421 looks on a black background.

## Color Contrast Check

Large Text (above 18pt) WCAG AA ✓ Pass

Any Text WCAG AA ✓ Pass

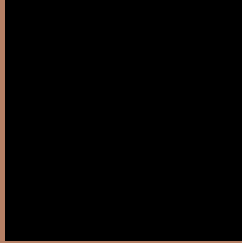
Large Text (above 18pt) WCAG AAA ✓ Pass

Any Text WCAG AAA × Fail

If you want to check with other color combinations, try the [Color Contrast Checker](#).



## Decimal 11960421 Background



This preview shows how black text looks on a background with the Decimal color 11960421.




This preview shows how white text looks on a background with the Decimal color 11960421.

# Color Blindness Simulation

Color vision deficiency is a very complex topic, and I could not describe the different causes any better than Wikipedia does, so if you want to learn more, you should check out their [article about color blindness](#).

## Dichromacy





**Tritanopia**  
12156037

# Trichromacy



**Original Color**  
11960421

**Protanomaly**  
10651752

**Deuteranomaly**  
11306084

**Tritanomaly**  
12090745

# Monochromacy



**Original Color**  
11960421

**Achromatopsia**  
9276813

**Achromatomaly**  
10258558

# CSS Examples

## Text

The CSS property to change the color of the text to Decimal 11960421 is called "color". The color property can be set on classes, ids or directly on the HTML element.

This example shows how text in the color #B68065 looks like.

```
.text, #text, p{  
    color:#B68065  
}
```

If you want to add a text shadow in that color use the text-shadow property, you can generate a text shadow directly with our [CSS Text Shadow Generator](#).

Here you see how black text with a 4 pixel #B68065 colored shadow looks like.

```
.shadow{ text-shadow: 4px 4px 2px #B68065
}
```

## Border

The CSS property to change the border of an element to Decimal 11960421 is called "border". The border property can be set on classes, ids or directly on the HTML element.

This example shows the color as border, it can be applied via the CSS property "border" or "border-color".

```
.border, #border, table{ border:4px solid
#B68065 }
```

If only the border color should be changed use the property `border-color`.

```
.border{ border-color:#B68065 }
```

If you want to add a box shadow in that color use:

Here you see how a box with a 4 pixel #B68065 colored shadow looks like.

```
.boxshadow{ -moz-box-shadow:4px 4px 4px  
4px #B68065; -webkit-box-shadow:4px 4px  
4px 4px #B68065; box-shadow:4px 4px 4px  
4px #B68065 }
```

# Background

The CSS property to change the background color of an element to Decimal 11960421 is called "background". The background property can be set on classes, ids or directly on the HTML element.

```
.background, #background, body{  
background:#B68065 }
```

If only the background color should be changed can be used:

```
.background{ background-color:#B68065 }
```

This example shows the color as background, it is applied via the CSS property "background".

To optimize and compress your CSS code, you can use our [online CSS compressor and optimizer](#) based on csstidy. If you want to create a linear or radial gradient as background or border, check our [CSS Gradient Generator](#).



Hey! You found this booklet interesting? Support Converting Colors with the new Membership Option!

The pro membership hides all ads, plus gives you double the colors in the color bucket, and more awesome pro features!

**[Learn more, Memberships starting at \\$2.50/m!](#)**

**Follow me  
on Twitter!**

@ConvertingColor