

Converting Colors

Decimal(11960694)

Have a look what the booklet for
Decimal(11960694) contains.

Decimal(11960694)	3
<i>Conversions</i>	4
<i>Details</i>	6
<i>Harmonies</i>	11
<i>Previews</i>	23
<i>Color Blindness Simulation</i>	26
<i>CSS Examples</i>	29

Color

Decimal(11960694)

Conversions

Conversions Part 1

Format	Color
Hex	B68176
RGB	182, 129, 118
RGB Percent	71%, 51%, 46%
CMY	0.2863, 0.4941, 0.5373
CMYK	0.00, 0.29, 0.35, 0.29
HSL	10°, 30%, 59%
HSV	10°, 35%, 71%
XYZ	30.4117, 26.9536, 20.7392
YIQ	143.5930, 35.1190, 7.8150

Conversions

Conversions Part 2

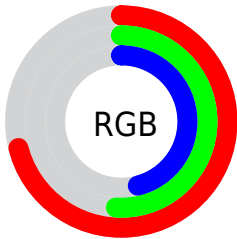
Format	Color
RYB	182, 131, 118
Decimal	11960694
CIELab	58.93, 19.00, 14.12
CIElCh	59, 23.674, 36.612
Yxy	26.9536, 0.3894, 0.3451
Android (android.graphics.Color)	4290150774 (0xFFB68176)
YUV	143.5930, -12.6173, 33.6829
Hunter-Lab	51.9169, 13.7066, 12.6572

Details

The Decimal color **11960694** is a dark color, and the websafe version is hex **CC9999**. A complement of this color would be **7777206**, and the grayscale version is **9474192**.

A 20% lighter version of the original color is **15709866**, and **8343366** is the 20% darker color. If you saturate the color by 10%, you get **11956836**, and if you desaturate by 10%, it is **11964552**.

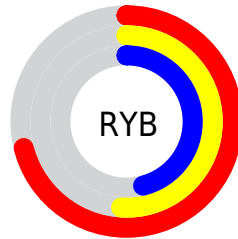
Distribution



Red (71%)

Green (51%)

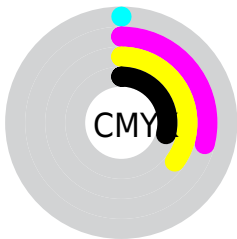
Blue (46%)



Red (71%)

Yellow (51%)

Blue (46%)

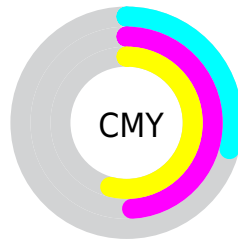


Cyan (0%)

Magenta (29%)

Yellow (35%)

Black (29%)



Cyan (29%)

Magenta (49%)

Yellow (54%)


Brightness & Saturation Gradients

These gradients show how the Decimal color 11960694 changes by changing the brightness by 10 percent. The first figure shows a shift by +10% for each color and the second figure -10%.

Similar to the brightness gradients but the following saturation gradients show a change of the Decimal color 11960694 by changing the saturation by 10% instead.

 11960694  11960694

16777215  10119261

 15709866  8343366

 16765637  6633519

 16772833  4989466

16777214  3410944

 1835009

 0

 11960694  11960694

 11956836  11964552

 11952978

 11968410

 11949119

 11972269

 11945261

 11976127

 11941403

 11979985

 11937545

 11983843

 11935488

 11987957

 11991807

 11993087

Harmonies

Analogous

The Analogous color harmony consists of three colors that are next to each other on the color wheel.



12025738



11960694



11241320

Triad

The Triadic color harmony groups three colors that are evenly spaced from another and form a triangle on the color wheel.



11960694



6920317



8031927

Complementary

The Complementary color scheme is a pair of colors which are on the opposite of each other on the color wheel.



11960694



7777206

Split Complementary

Split-complementary colors differ from the complementary color scheme. The scheme consists of three colors, the original color and two neighbors of the complement color.



6198451



11960694



5609874

Square

The Square scheme is like the rectangle color scheme, but the four colors are evenly spaced on the color wheel.



11960694



8492140



5216422



9930671

Rectangle

The Rectangle color scheme consists of four colors that form a rectangle on the color wheel.



11960694



10456164



5216422



7377079

Sweetspot

The Sweet Spot groups the original color and five complimentary colors.



11960694



15587539



11957931



7891816



16250871



7895160

Same Dimension

The Same Dimension uses a secret algorithm to generate beautiful new colors.



11960694



15571850



11968886



6050899



10230528



1836288

Inverse Universe

The Inverse Universe completely reimagines the original color for something new.



7777206



9100525



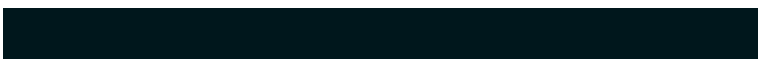
7769014



5462620



33180



5916

Previews

White Background



This preview shows how the Decimal color 11960694 looks on a white background.

Color Contrast Check

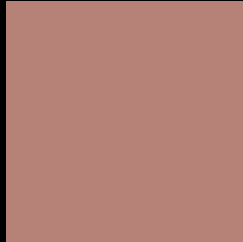
Large Text (above 18pt) WCAG AA ✓ Pass

Any Text WCAG AA × Fail

Large Text (above 18pt) WCAG AAA × Fail

Any Text WCAG AAA × Fail

Black Background



This preview shows how the Decimal color 11960694 looks on a black background.

Color Contrast Check

Large Text (above 18pt) WCAG AA ✓ Pass

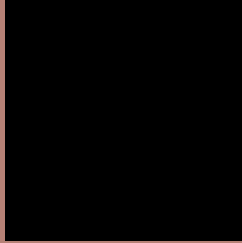
Any Text WCAG AA ✓ Pass

Large Text (above 18pt) WCAG AAA ✓ Pass

Any Text WCAG AAA × Fail

If you want to check with other color combinations, try the [Color Contrast Checker](#).

Decimal 11960694 Background



This preview shows how black text looks on a background with the Decimal color 11960694.



This preview shows how white text looks on a background with the Decimal color 11960694.

Color Blindness Simulation

Color vision deficiency is a very complex topic, and I could not describe the different causes any better than Wikipedia does, so if you want to learn more, you should check out their [article about color blindness](#).

Dichromacy



Original Color
11960694

Protanopia
9801340

Deuteranopia
10848629



Tritanopia
12091016

Trichromacy



Original Color
11960694

Protanomaly
10586490

Deuteranomaly
11241077

Tritanomaly
12025729

Monochromacy



Original Color
11960694

Achromatopsia
9474192

Achromatomaly
10390407

CSS Examples

Text

The CSS property to change the color of the text to Decimal 11960694 is called "color". The color property can be set on classes, ids or directly on the HTML element.

This example shows how text in the color #B68176 looks like.

```
.text, #text, p{  
    color:#B68176  
}
```

If you want to add a text shadow in that color use the text-shadow property, you can generate a text shadow directly with our [CSS Text Shadow Generator](#).

Here you see how black text with a 4 pixel #B68176 colored shadow looks like.

```
.shadow{ text-shadow: 4px 4px 2px #B68176
}
```

Border

The CSS property to change the border of an element to Decimal 11960694 is called "border". The border property can be set on classes, ids or directly on the HTML element.

This example shows the color as border, it can be applied via the CSS property "border" or "border-color".

```
.border, #border, table{ border:4px solid
#B68176 }
```

If only the border color should be changed use the property `border-color`.

```
.border{ border-color:#B68176 }
```

If you want to add a box shadow in that color use:

Here you see how a box with a 4 pixel #B68176 colored shadow looks like.

```
.boxshadow{ -moz-box-shadow:4px 4px 4px  
4px #B68176; -webkit-box-shadow:4px 4px  
4px 4px #B68176; box-shadow:4px 4px 4px  
4px #B68176 }
```

Background

The CSS property to change the background color of an element to Decimal 11960694 is called "background". The background property can be set on classes, ids or directly on the HTML element.

```
.background, #background, body{  
background:#B68176 }
```

If only the background color should be changed can be used:

```
.background{ background-color:#B68176 }
```

This example shows the color as background, it is applied via the CSS property "background".

To optimize and compress your CSS code, you can use our [online CSS compressor and optimizer](#) based on csstidy. If you want to create a linear or radial gradient as background or border, check our [CSS Gradient Generator](#).

Hey! You found this booklet interesting? Support Converting Colors with the new Membership Option!

The pro membership hides all ads, plus gives you double the colors in the color bucket, and more awesome pro features!

[Learn more, Memberships starting at \\$2.50/m!](#)

**Follow me
on Twitter!**

@ConvertingColor