

Converting Colors

Decimal(11961190)

Have a look what the booklet for
Decimal(11961190) contains.

Decimal(11961190)	3
<i>Conversions</i>	4
<i>Details</i>	6
<i>Harmonies</i>	11
<i>Previews</i>	23
<i>Color Blindness Simulation</i>	26
<i>CSS Examples</i>	29

Color

Decimal(11961190)

Conversions

Conversions Part 1

Format	Color
Hex	B68366
RGB	182, 131, 102
RGB Percent	71%, 51%, 40%
CMY	0.2863, 0.4863, 0.6000
CMYK	0.00, 0.28, 0.44, 0.29
HSL	22°, 35%, 56%
HSV	22°, 44%, 71%
XYZ	29.8060, 27.1370, 16.2374
YIQ	142.9430, 39.7050, 1.7930

Conversions

Conversions Part 2

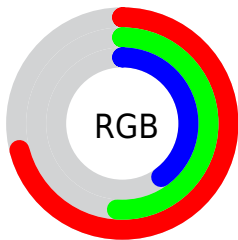
Format	Color
R_{YB}	182, 147, 102
Decimal	11961190
CIE _{Lab}	59.10, 15.99, 23.43
CIE _{LCh}	59, 28.360, 55.689
Yxy	27.1370, 0.4073, 0.3708
Android (android.graphics.Color)	4290151270 (0xFFB68366)
YUV	142.9430, -20.1849, 34.2530
Hunter-Lab	52.0932, 10.9687, 17.9846

Details

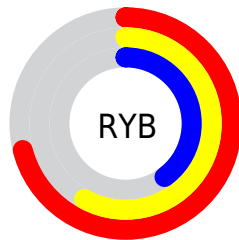
The Decimal color **11961190** is a dark color, and the websafe version is hex **CC9966**. A complement of this color would be **6724022**, and the grayscale version is **9408399**.

A 20% lighter version of the original color is **15775897**, and **8343863** is the 20% darker color. If you saturate the color by 10%, you get **11958100**, and if you desaturate by 10%, it is **11964280**.

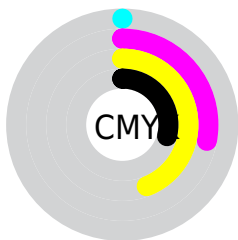
Distribution



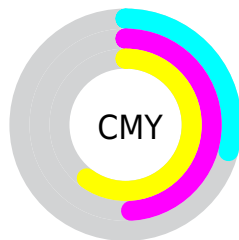
- Red (71%)
- Green (51%)
- Blue (40%)



- Red (71%)
- Yellow (58%)
- Blue (40%)



- Cyan (0%)
- Magenta (28%)
- Yellow (44%)
- Black (29%)



- Cyan (29%)
- Magenta (49%)
- Yellow (60%)

Brightness & Saturation Gradients

These gradients show how the Decimal color 11961190 changes by changing the brightness by 10 percent. The first figure shows a shift by +10% for each color and the second figure -10%.

Similar to the brightness gradients but the following saturation gradients show a change of the Decimal color 11961190 by changing the saturation by 10% instead.

 11961190

 11961190

16777215

 10119758

 15775897

 8343863

 16766132

 6568481

 16773328

 4924427

 16777196

 3280640

 1638401

 0

 11961190

 11961190

 11958100

 11964280

■ 11955266

■ 11967114

■ 11952175

■ 11970205

■ 11949341

■ 11973039

■ 11946251

■ 11976129

■ 11944448

■ 11979219

■ 11982053

■ 11985144

■ 11987967

Harmonies

Analogous

The Analogous color harmony consists of three colors that are next to each other on the color wheel.



12549498



11961190



10718045

Triad

The Triadic color harmony groups three colors that are evenly spaced from another and form a triangle on the color wheel.



11961190



5217418



9275835

Complementary

The Complementary color scheme is a pair of colors which are on the opposite of each other on the color wheel.



11961190



6724022

Split Complementary

Split-complementary colors differ from the complementary color scheme. The scheme consists of three colors, the original color and two neighbors of the complement color.



6787775



11961190



3840931

Square

The Square scheme is like the rectangle color scheme, but the four colors are evenly spaced on the color wheel.



11961190



7117169



4495543



11239851

Rectangle

The Rectangle color scheme consists of four colors that form a rectangle on the color wheel.



11961190



9605470



4495543



8490174

Sweetspot

The Sweet Spot groups the original color and five complimentary colors.



11961190



15587790



11953818



7892069



16250871



7895160

Same Dimension

The Same Dimension uses a secret algorithm to generate beautiful new colors.



11961190



15572335



11971174



6051411



10237952



1837568

Inverse Universe

The Inverse Universe completely reimagines the original color for something new.



6724022



7323885



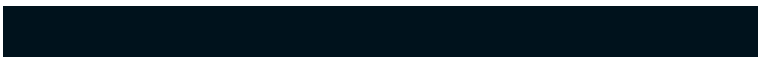
6714038



5462108



25500



4636

Previews

White Background



This preview shows how the Decimal color 11961190 looks on a white background.

Color Contrast Check

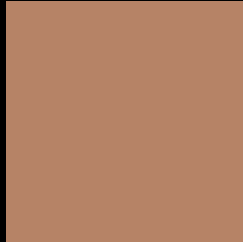
Large Text (above 18pt) WCAG AA ✓ Pass

Any Text WCAG AA × Fail

Large Text (above 18pt) WCAG AAA × Fail

Any Text WCAG AAA × Fail

Black Background



This preview shows how the Decimal color 11961190 looks on a black background.

Color Contrast Check

Large Text (above 18pt) WCAG AA ✓ Pass

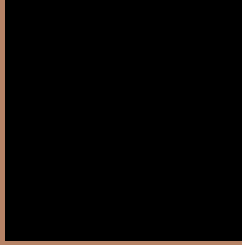
Any Text WCAG AA ✓ Pass

Large Text (above 18pt) WCAG AAA ✓ Pass

Any Text WCAG AAA × Fail

If you want to check with other color combinations, try the [Color Contrast Checker](#).

Decimal 11961190 Background



This preview shows how black text looks on a background with the Decimal color 11961190.



This preview shows how white text looks on a background with the Decimal color 11961190.

Color Blindness Simulation

Color vision deficiency is a very complex topic, and I could not describe the different causes any better than Wikipedia does, so if you want to learn more, you should check out their [article about color blindness](#).


Dichromacy



Original Color
11961190

Protanopia
10063467

Deuteranopia
11176293



Tritanopia
12156552

Trichromacy



Original Color
11961190

Protanomaly
10783337

Deuteranomaly
11437925

Tritanomaly
12091516

Monochromacy



Original Color
11961190

Achromatopsia
9408399

Achromatomaly
10324864

CSS Examples

Text

The CSS property to change the color of the text to Decimal 11961190 is called "color". The color property can be set on classes, ids or directly on the HTML element.

This example shows how text in the color #B68366 looks like.

```
.text, #text, p{  
    color:#B68366  
}
```

If you want to add a text shadow in that color use the text-shadow property, you can generate a text shadow directly with our [CSS Text Shadow Generator](#).

Here you see how black text with a 4 pixel #B68366 colored shadow looks like.

```
.shadow{ text-shadow: 4px 4px 2px #B68366
}
```

Border

The CSS property to change the border of an element to Decimal 11961190 is called "border". The border property can be set on classes, ids or directly on the HTML element.

This example shows the color as border, it can be applied via the CSS property "border" or "border-color".

```
.border, #border, table{ border:4px solid
#B68366 }
```

If only the border color should be changed use the property `border-color`.

```
.border{ border-color:#B68366 }
```

If you want to add a box shadow in that color use:

Here you see how a box with a 4 pixel #B68366 colored shadow looks like.

```
.boxshadow{ -moz-box-shadow:4px 4px 4px  
4px #B68366; -webkit-box-shadow:4px 4px  
4px 4px #B68366; box-shadow:4px 4px 4px  
4px #B68366 }
```

Background

The CSS property to change the background color of an element to Decimal 11961190 is called "background". The background property can be set on classes, ids or directly on the HTML element.

```
.background, #background, body{  
background:#B68366 }
```

If only the background color should be changed can be used:

```
.background{ background-color:#B68366 }
```

This example shows the color as background, it is applied via the CSS property "background".

To optimize and compress your CSS code, you can use our [online CSS compressor and optimizer](#) based on csstidy. If you want to create a linear or radial gradient as background or border, check our [CSS Gradient Generator](#).

Hey! You found this booklet interesting? Support Converting Colors with the new Membership Option!

The pro membership hides all ads, plus gives you double the colors in the color bucket, and more awesome pro features!

[Learn more, Memberships starting at \\$2.50/m!](#)

**Follow me
on Twitter!**

@ConvertingColor