

# Converting Colors

Decimal(11961735)

Have a look what the booklet for  
Decimal(11961735) contains.

<b>Decimal(11961735)</b> .....	3
<i><b>Conversions</b></i> .....	4
<i><b>Details</b></i> .....	6
<i><b>Harmonies</b></i> .....	11
<i><b>Previews</b></i> .....	23
<i><b>Color Blindness Simulation</b></i> .....	26
<i><b>CSS Examples</b></i> .....	29

# **Color**

**Decimal(11961735)**

# Conversions

## Conversions Part 1

<b>Format</b>	<b>Color</b>
Hex	B68587
RGB	182, 133, 135
RGB Percent	71%, 52%, 53%
CMY	0.2863, 0.4784, 0.4706
CMYK	0.00, 0.27, 0.26, 0.29
HSL	358°, 25%, 62%
HSV	358°, 27%, 71%
XYZ	32.0521, 28.4694, 26.7275
YIQ	147.8790, 28.5620, 11.0100

# Conversions

## Conversions Part 2

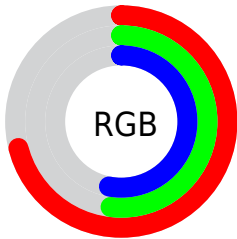
<b>Format</b>	<b>Color</b>
<a href="#">RYB</a>	<a href="#">182, 133, 135</a>
Decimal	<a href="#">11961735</a>
CIELab	<a href="#">60.31, 19.10, 6.34</a>
CIELCh	<a href="#">60, 20.126, 18.372</a>
Yxy	<a href="#">28.4694, 0.3674, 0.3263</a>
Android (android.graphics.Color)	<a href="#">4290151815 (0xFFB68587)</a>
YUV	<a href="#">147.8790, -6.3493, 29.9241</a>
Hunter-Lab	<a href="#">53.3567, 13.8531, 7.6501</a>

# Details

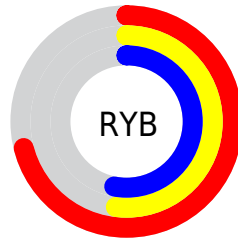
The Decimal color **11961735** is a light color, and the websafe version is hex **CC9999**. A complement of this color would be **8763060**, and the grayscale version is **9737364**.

A 20% lighter version of the original color is **15710908**, and **8409941** is the 20% darker color. If you saturate the color by 10%, you get **11957110**, and if you desaturate by 10%, it is **11966360**.

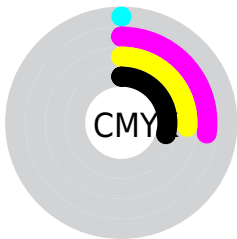
# Distribution



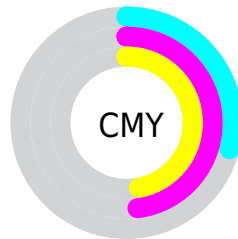
- Red (71%)
- Green (52%)
- Blue (53%)



- Red (71%)
- Yellow (52%)
- Blue (53%)



- Cyan (0%)
- Magenta (27%)
- Yellow (26%)
- Black (29%)



- Cyan (29%)
- Magenta (48%)
- Yellow (47%)

# Brightness & Saturation Gradients

These gradients show how the Decimal color 11961735 changes by changing the brightness by 10 percent. The first figure shows a shift by +10% for each color and the second figure -10%.

Similar to the brightness gradients but the following saturation gradients show a change of the Decimal color 11961735 by changing the saturation by 10% instead.



 11961735

 11961735

16777215

 10185838

 15710908

 8409941

 16766680

 6700094

 16774132

 5055784

 3477524

 2228225

 0

 11961735

 11961735

 11957110

 11966360

 11952484

 11970986

 11947603

 11975867

 11942977

 11980493

 11938352

 11985118

 11933726

 11989744

 11929101

 11993087

 11927559

# Harmonies

## Analogous

The Analogous color harmony consists of three colors that are next to each other on the color wheel.



11634073



11961735



11700344

# Triad

The Triadic color harmony groups three colors that are evenly spaced from another and form a triangle on the color wheel.



11961735



8362105



7574964

# Complementary

The Complementary color scheme is a pair of colors which are on the opposite of each other on the color wheel.



11961735



8763060

# Split Complementary

Split-complementary colors differ from the complementary color scheme. The scheme consists of three colors, the original color and two neighbors of the complement color.



6461867



11961735



7117706

# Square

The Square scheme is like the rectangle color scheme, but the four colors are evenly spaced on the color wheel.



11961735



9671792



6331292



9146291

# Rectangle

The Rectangle color scheme consists of four colors that form a rectangle on the color wheel.



11961735



11177073



6331292



7116722



# Sweetspot

The Sweet Spot groups the original color and five complimentary colors.



11961735



15588059



11830710



7892076



16250871



7895160



# Same Dimension

The Same Dimension uses a secret algorithm to generate beautiful new colors.



11961735



15573412



11967365



6050643



10223622



1835009



# Inverse Universe

The Inverse Universe completely reimagines the original color for something new.



11961735



15573412



8757430



6050643



10223622

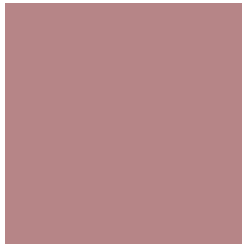


1835009



# Previews

## White Background



This preview shows how the Decimal color 11961735 looks on a white background.

## Color Contrast Check

Large Text (above 18pt) WCAG AA ✓ Pass

Any Text WCAG AA × Fail

Large Text (above 18pt) WCAG AAA × Fail

Any Text WCAG AAA × Fail

# Black Background



This preview shows how the Decimal color 11961735 looks on a black background.

## Color Contrast Check

Large Text (above 18pt) WCAG AA ✓ Pass

Any Text WCAG AA ✓ Pass

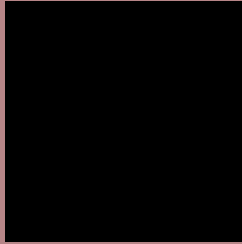
Large Text (above 18pt) WCAG AAA ✓ Pass

Any Text WCAG AAA × Fail

If you want to check with other color combinations, try the [Color Contrast Checker](#).



## Decimal 11961735 Background



This preview shows how black text looks on a background with the Decimal color 11961735.



This preview shows how white text looks on a background with the Decimal color 11961735.

# Color Blindness Simulation

Color vision deficiency is a very complex topic, and I could not describe the different causes any better than Wikipedia does, so if you want to learn more, you should check out their [article about color blindness](#).

## Dichromacy



**Original Color**  
11961735

**Protanopia**  
9802126

**Deuteranopia**  
10784134



# Trichromacy



**Original Color**  
11961735

**Protanomaly**  
10587531

**Deuteranomaly**  
11242118

**Tritanomaly**  
12027019

# Monochromacy



**Original Color**  
11961735

**Achromatopsia**  
9737364

**Achromatomaly**  
10522511

# CSS Examples

## Text

The CSS property to change the color of the text to Decimal 11961735 is called "color". The color property can be set on classes, ids or directly on the HTML element.

This example shows how text in the color #B68587 looks like.

```
.text, #text, p{  
    color:#B68587  
}
```

If you want to add a text shadow in that color use the text-shadow property, you can generate a text shadow directly with our [CSS Text Shadow Generator](#).

Here you see how black text with a 4 pixel #B68587 colored shadow looks like.

```
.shadow{ text-shadow: 4px 4px 2px #B68587
}
```

## Border

The CSS property to change the border of an element to Decimal 11961735 is called "border". The border property can be set on classes, ids or directly on the HTML element.

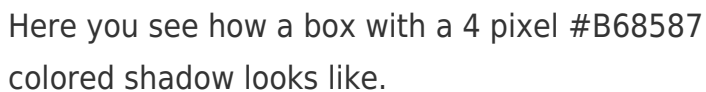
This example shows the color as border, it can be applied via the CSS property "border" or "border-color".

```
.border, #border, table{ border:4px solid
#B68587 }
```

If only the border color should be changed use the property `border-color`.

```
.border{ border-color:#B68587 }
```

If you want to add a box shadow in that color use:



Here you see how a box with a 4 pixel #B68587 colored shadow looks like.

```
.boxshadow{ -moz-box-shadow:4px 4px 4px  
4px #B68587; -webkit-box-shadow:4px 4px  
4px 4px #B68587; box-shadow:4px 4px 4px  
4px #B68587 }
```

# Background

The CSS property to change the background color of an element to Decimal 11961735 is called "background". The background property can be set on classes, ids or directly on the HTML element.

```
.background, #background, body{  
background:#B68587 }
```

If only the background color should be changed can be used:

```
.background{ background-color:#B68587 }
```

This example shows the color as background, it is applied via the CSS property "background".

To optimize and compress your CSS code, you can use our [online CSS compressor and optimizer](#) based on csstidy. If you want to create a linear or radial gradient as background or border, check our [CSS Gradient Generator](#).



Hey! You found this booklet interesting? Support Converting Colors with the new Membership Option!

The pro membership hides all ads, plus gives you double the colors in the color bucket, and more awesome pro features!

**[Learn more, Memberships starting at \\$2.50/m!](#)**

**Follow me  
on Twitter!**

@ConvertingColor