

# Converting Colors

Decimal(11961983)

Have a look what the booklet for  
Decimal(11961983) contains.

<b>Decimal(11961983)</b> .....	3
<b><i>Conversions</i></b> .....	4
<b><i>Details</i></b> .....	6
<b><i>Harmonies</i></b> .....	11
<b><i>Previews</i></b> .....	23
<b><i>Color Blindness Simulation</i></b> .....	26
<b><i>CSS Examples</i></b> .....	29

# Color

**Decimal(11961983)**

# Conversions

## Conversions Part 1

<b>Format</b>	<b>Color</b>
Hex	B6867F
RGB	182, 134, 127
RGB Percent	71%, 53%, 50%
CMY	0.2863, 0.4745, 0.5020
CMYK	0.00, 0.26, 0.30, 0.29
HSL	8°, 27%, 61%
HSV	8°, 30%, 71%
XYZ	31.6473, 28.5276, 23.9171
YIQ	147.5540, 30.8550, 7.9990

# Conversions

## Conversions Part 2

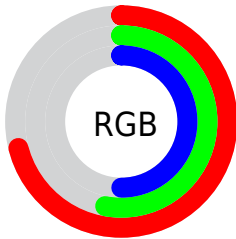
<b>Format</b>	<b>Color</b>
<b>R<sub>YB</sub></b>	182, 135, 127
Decimal	11961983
CIE Lab	60.36, 17.40, 10.99
CIE LCh	60, 20.581, 32.260
Yxy	28.5276, 0.3763, 0.3392
Android (android.graphics.Color)	4290152063 (0xFFB6867F)
YUV	147.5540, -10.1331, 30.2091
Hunter-Lab	53.4112, 12.2954, 10.8383

# Details

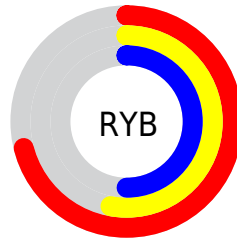
The Decimal color **11961983** is a dark color, and the websafe version is hex **CC9999**. A complement of this color would be **8368054**, and the grayscale version is **9737364**.

A 20% lighter version of the original color is **15711156**, and **8410190** is the 20% darker color. If you saturate the color by 10%, you get **11957869**, and if you desaturate by 10%, it is **11966097**.

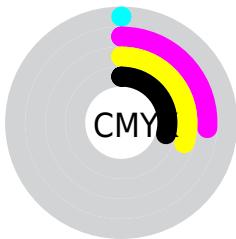
# Distribution



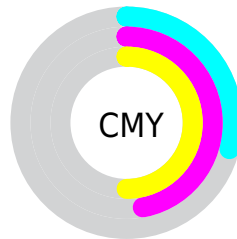
- Red (71%)
- Green (53%)
- Blue (50%)



- Red (71%)
- Yellow (53%)
- Blue (50%)



- Cyan (0%)
- Magenta (26%)
- Yellow (30%)
- Black (29%)



- Cyan (29%)
- Magenta (47%)
- Yellow (50%)

# Brightness & Saturation Gradients

These gradients show how the Decimal color 11961983 changes by changing the brightness by 10 percent. The first figure shows a shift by +10% for each color and the second figure -10%.

Similar to the brightness gradients but the following saturation gradients show a change of the Decimal color 11961983 by changing the saturation by 10% instead.



 11961983

 11961983

16777215

 10186086

 15711156

 8410190

 16766927

 6700343

 16774379

 5056034

 3477772

 2097153

 0

 11961983

 11961983

 11957869

 11966097

 11953755

 11970211

 11949640

 11974326

 11945526

 11978440

 11941668

 11982298

 11937554

 11986412

 11933440

 11990526

 11993087

# Harmonies

## Analogous

The Analogous color harmony consists of three colors that are next to each other on the color wheel.



11896209



11961983



11373426

# Triad

The Triadic color harmony groups three colors that are evenly spaced from another and form a triangle on the color wheel.



11961983



7707264



8295349

# Complementary

The Complementary color scheme is a pair of colors which are on the opposite of each other on the color wheel.



11961983



8368054

# Split Complementary

Split-complementary colors differ from the complementary color scheme. The scheme consists of three colors, the original color and two neighbors of the complement color.



6854833



11961983



6593682

# Square

The Square scheme is like the rectangle color scheme, but the four colors are evenly spaced on the color wheel.



11961983



9082483



6200228



9866416

# Rectangle

The Rectangle color scheme consists of four colors that form a rectangle on the color wheel.



11961983



10784622



6200228



7771573



# Sweetspot

The Sweet Spot groups the original color and five complimentary colors.



11961983



15588312



11960240



7892075



16250871



7895160



# Same Dimension

The Same Dimension uses a secret algorithm to generate beautiful new colors.



11961983



15573912



11968895



6050899



10228736



1836032



# Inverse Universe

The Inverse Universe completely reimagines the original color for something new.



8368054



10019565



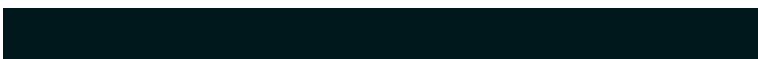
8361142



5462876



34972



6172



# Previews

## White Background



This preview shows how the Decimal color 11961983 looks on a white background.

## Color Contrast Check

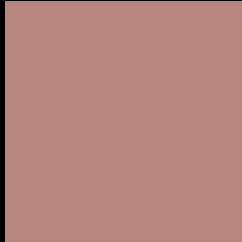
Large Text (above 18pt) WCAG AA ✓ Pass

Any Text WCAG AA × Fail

Large Text (above 18pt) WCAG AAA × Fail

Any Text WCAG AAA × Fail

# Black Background



This preview shows how the Decimal color 11961983 looks on a black background.

## Color Contrast Check

Large Text (above 18pt) WCAG AA ✓ Pass

Any Text WCAG AA ✓ Pass

Large Text (above 18pt) WCAG AAA ✓ Pass

Any Text WCAG AAA × Fail

If you want to check with other color combinations, try the [Color Contrast Checker](#).



## Decimal 11961983 Background



This preview shows how black text looks on a background with the Decimal color 11961983.



This preview shows how white text looks on a background with the Decimal color 11961983.

# Color Blindness Simulation

Color vision deficiency is a very complex topic, and I could not describe the different causes any better than Wikipedia does, so if you want to learn more, you should check out their [article about color blindness](#).

## Dichromacy





**Tritanopia**  
12092558

# Trichromacy



**Original Color**  
11961983

**Protanomaly**  
10653059

**Deuteranomaly**  
11307646

**Tritanomaly**  
12027273

# Monochromacy



**Original Color**  
11961983

**Achromatopsia**  
9737364

**Achromatomaly**  
10522508

# CSS Examples

## Text

The CSS property to change the color of the text to Decimal 11961983 is called "color". The color property can be set on classes, ids or directly on the HTML element.

This example shows how text in the color #B6867F looks like.

```
.text, #text, p{  
  color:#B6867F  
}
```

If you want to add a text shadow in that color use the text-shadow property, you can generate a text shadow directly with our [CSS Text Shadow Generator](#).

Here you see how black text with a 4 pixel #B6867F colored shadow looks like.

```
.shadow{ text-shadow: 4px 4px 2px #B6867F
}
```

## Border

The CSS property to change the border of an element to Decimal 11961983 is called "border". The border property can be set on classes, ids or directly on the HTML element.

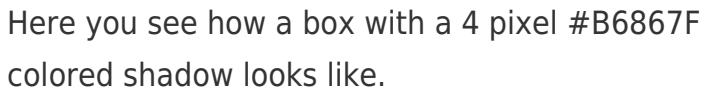
This example shows the color as border, it can be applied via the CSS property "border" or "border-color".

```
.border, #border, table{ border:4px solid
#B6867F }
```

If only the border color should be changed use the property `border-color`.

```
.border{ border-color:#B6867F }
```

If you want to add a box shadow in that color use:



Here you see how a box with a 4 pixel #B6867F colored shadow looks like.

```
.boxshadow{ -moz-box-shadow:4px 4px 4px  
4px #B6867F; -webkit-box-shadow:4px 4px  
4px 4px #B6867F; box-shadow:4px 4px 4px  
4px #B6867F }
```

# Background

The CSS property to change the background color of an element to Decimal 11961983 is called "background". The background property can be set on classes, ids or directly on the HTML element.

```
.background, #background, body{  
background:#B6867F }
```

If only the background color should be changed can be used:

```
.background{ background-color:#B6867F }
```

This example shows the color as background, it is applied via the CSS property "background".

To optimize and compress your CSS code, you can use our [online CSS compressor and optimizer](#) based on csstidy. If you want to create a linear or radial gradient as background or border, check our [CSS Gradient Generator](#).



Hey! You found this booklet interesting? Support Converting Colors with the new Membership Option!

The pro membership hides all ads, plus gives you double the colors in the color bucket, and more awesome pro features!

**[Learn more, Memberships starting at \\$2.50/m!](#)**

**Follow me  
on Twitter!**

@ConvertingColor