

# Converting Colors

Decimal(11962754)

Have a look what the booklet for  
Decimal(11962754) contains.

<b>Decimal(11962754)</b> .....	3
<i><b>Conversions</b></i> .....	4
<i><b>Details</b></i> .....	6
<i><b>Harmonies</b></i> .....	11
<i><b>Previews</b></i> .....	23
<i><b>Color Blindness Simulation</b></i> .....	26
<i><b>CSS Examples</b></i> .....	29

# **Color**

**Decimal(11962754)**

# Conversions

## Conversions Part 1

Format	Color
Hex	B68982
RGB	182, 137, 130
RGB Percent	71%, 54%, 51%
CMY	0.2863, 0.4627, 0.4902
CMYK	0.00, 0.25, 0.29, 0.29
HSL	8°, 26%, 61%
HSV	8°, 29%, 71%
XYZ	32.2663, 29.4481, 25.1025
YIQ	149.6570, 29.0670, 7.3630

# Conversions

## Conversions Part 2

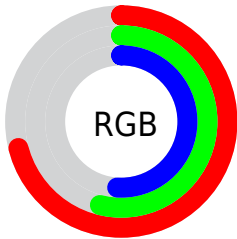
<b>Format</b>	<b>Color</b>
<b>RYB</b>	182, 138, 130
Decimal	11962754
CIELab	61.18, 16.15, 10.43
CIELCh	61, 19.220, 32.849
Yxy	29.4481, 0.3717, 0.3392
Android (android.graphics.Color)	4290152834 (0xFFB68982)
YUV	149.6570, -9.6909, 28.3648
Hunter-Lab	54.2661, 11.1694, 10.5598

# Details

The Decimal color **11962754** is a light color, and the websafe version is hex **CC9999**. A complement of this color would be **8564662**, and the grayscale version is **9868950**.

A 20% lighter version of the original color is **15712183**, and **8410961** is the 20% darker color. If you saturate the color by 10%, you get **11958640**, and if you desaturate by 10%, it is **11966868**.

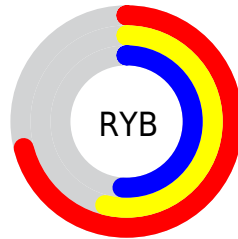
# Distribution



Red (71%)

Green (54%)

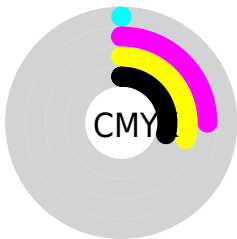
Blue (51%)



Red (71%)

Yellow (54%)

Blue (51%)

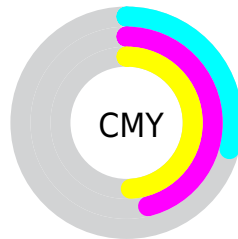


Cyan (0%)

Magenta (25%)

Yellow (29%)

Black (29%)



Cyan (29%)

Magenta (46%)

Yellow (49%)

# Brightness & Saturation Gradients

These gradients show how the Decimal color 11962754 changes by changing the brightness by 10 percent. The first figure shows a shift by +10% for each color and the second figure -10%.

Similar to the brightness gradients but the following saturation gradients show a change of the Decimal color 11962754 by changing the saturation by 10% instead.



 11962754

 11962754

16777215

 10186601

 15712183

 8410961

 16767699

 6700858

 16775151

 5056804

 3478543

 2097152

 0

 11962754

 11962754

 11958640

 11966868

 11954782

 11970982

 11950667

 11974841

 11946553

 11978955

 11942439

 11983069

 11938325

 11987183

 11934467

 11991039

 11933696

 11993087

# Harmonies

## Analogous

The Analogous color harmony consists of three colors that are next to each other on the color wheel.



11896979



11962754



11439478

# Triad

The Triadic color harmony groups three colors that are evenly spaced from another and form a triangle on the color wheel.



11962754



7969924



8558005

# Complementary

The Complementary color scheme is a pair of colors which are on the opposite of each other on the color wheel.



11962754



8564662

# Split Complementary

Split-complementary colors differ from the complementary color scheme. The scheme consists of three colors, the original color and two neighbors of the complement color.



7248561



11962754



6987157

# Square

The Square scheme is like the rectangle color scheme, but the four colors are evenly spaced on the color wheel.



11962754



9214071



6593957



10063792

# Rectangle

The Rectangle color scheme consists of four colors that form a rectangle on the color wheel.



11962754



10785138



6593957



8033973



# Sweetspot

The Sweet Spot groups the original color and five complimentary colors.



11962754



15588312



11961007



7892075



16250871



7895160



# Same Dimension

The Same Dimension uses a secret algorithm to generate beautiful new colors.



11962754



15574941



11969410



6050899



10228992



1836032



# Inverse Universe

The Inverse Universe completely reimagines the original color for something new.



8564662



10347245



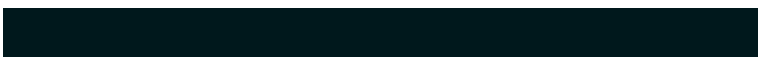
8558006



5462876



34716

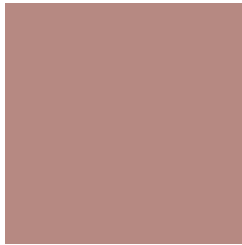


6172



# Previews

## White Background



This preview shows how the Decimal color 11962754 looks on a white background.

## Color Contrast Check

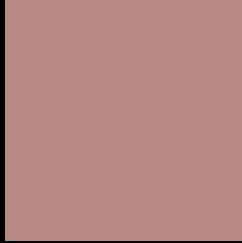
Large Text (above 18pt) WCAG AA ✓ Pass

Any Text WCAG AA × Fail

Large Text (above 18pt) WCAG AAA × Fail

Any Text WCAG AAA × Fail

# Black Background



This preview shows how the Decimal color 11962754 looks on a black background.

## Color Contrast Check

Large Text (above 18pt) WCAG AA ✓ Pass

Any Text WCAG AA ✓ Pass

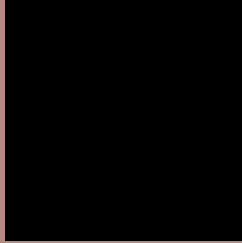
Large Text (above 18pt) WCAG AAA ✓ Pass

Any Text WCAG AAA × Fail

If you want to check with other color combinations, try the [Color Contrast Checker](#).



## Decimal 11962754 Background



This preview shows how black text looks on a background with the Decimal color 11962754.



This preview shows how white text looks on a background with the Decimal color 11962754.

# Color Blindness Simulation

Color vision deficiency is a very complex topic, and I could not describe the different causes any better than Wikipedia does, so if you want to learn more, you should check out their [article about color blindness](#).


## Dichromacy



**Original Color**  
11962754

**Protanopia**  
10130311

**Deuteranopia**  
11112065



**Tritanopia**  
12093329

# Trichromacy



**Original Color**  
11962754

**Protanomaly**  
10784645

**Deuteranomaly**  
11439233

**Tritanomaly**  
12028044

# Monochromacy



**Original Color**  
11962754

**Achromatopsia**  
9868950

**Achromatomaly**  
10654095

# CSS Examples

## Text

The CSS property to change the color of the text to Decimal 11962754 is called "color". The color property can be set on classes, ids or directly on the HTML element.

This example shows how text in the color #B68982 looks like.

```
.text, #text, p{  
  color:#B68982  
}
```

If you want to add a text shadow in that color use the text-shadow property, you can generate a text shadow directly with our [CSS Text Shadow Generator](#).

Here you see how black text with a 4 pixel #B68982 colored shadow looks like.

```
.shadow{ text-shadow: 4px 4px 2px #B68982
}
```

## Border

The CSS property to change the border of an element to Decimal 11962754 is called "border". The border property can be set on classes, ids or directly on the HTML element.

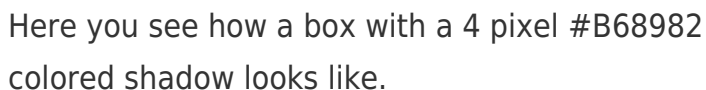
This example shows the color as border, it can be applied via the CSS property "border" or "border-color".

```
.border, #border, table{ border:4px solid
#B68982 }
```

If only the border color should be changed use the property `border-color`.

```
.border{ border-color:#B68982 }
```

If you want to add a box shadow in that color use:



Here you see how a box with a 4 pixel #B68982 colored shadow looks like.

```
.boxshadow{ -moz-box-shadow:4px 4px 4px  
4px #B68982; -webkit-box-shadow:4px 4px  
4px 4px #B68982; box-shadow:4px 4px 4px  
4px #B68982 }
```

# Background

The CSS property to change the background color of an element to Decimal 11962754 is called "background". The background property can be set on classes, ids or directly on the HTML element.

```
.background, #background, body{  
background:#B68982 }
```

If only the background color should be changed can be used:

```
.background{ background-color:#B68982 }
```

This example shows the color as background, it is applied via the CSS property "background".

To optimize and compress your CSS code, you can use our [online CSS compressor and optimizer](#) based on csstidy. If you want to create a linear or radial gradient as background or border, check our [CSS Gradient Generator](#).



Hey! You found this booklet interesting? Support Converting Colors with the new Membership Option!

The pro membership hides all ads, plus gives you double the colors in the color bucket, and more awesome pro features!

**[Learn more, Memberships starting at \\$2.50/m!](#)**

**Follow me  
on Twitter!**

@ConvertingColor