

Converting Colors

Decimal(11962757)

Have a look what the booklet for
Decimal(11962757) contains.

Decimal(11962757)	3
<i>Conversions</i>	4
<i>Details</i>	6
<i>Harmonies</i>	11
<i>Previews</i>	23
<i>Color Blindness Simulation</i>	26
<i>CSS Examples</i>	29

Color

Decimal(11962757)

Conversions

Conversions Part 1

Format	Color
Hex	B68985
RGB	182, 137, 133
RGB Percent	71%, 54%, 52%
CMY	0.2863, 0.4627, 0.4784
CMYK	0.00, 0.25, 0.27, 0.29
HSL	5°, 25%, 62%
HSV	5°, 27%, 71%
XYZ	32.4707, 29.5299, 26.1787
YIQ	149.9990, 28.1040, 8.2960

Conversions

Conversions Part 2

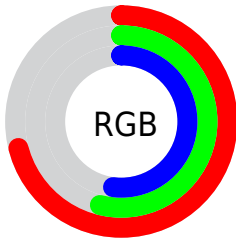
Format	Color
RYB	182, 137, 133
Decimal	11962757
CIELab	61.25, 16.57, 8.82
CIELCh	61, 18.775, 28.020
Yxy	29.5299, 0.3682, 0.3349
Android (android.graphics.Color)	4290152837 (0xFFB68985)
YUV	149.9990, -8.3805, 28.0649
Hunter-Lab	54.3414, 11.5620, 9.4762

Details

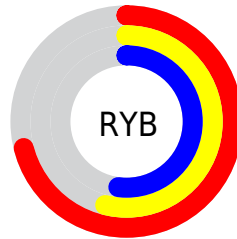
The Decimal color **11962757** is a light color, and the websafe version is hex **CC9999**. A complement of this color would be **8762038**, and the grayscale version is **9868950**.

A 20% lighter version of the original color is **15712186**, and **8410964** is the 20% darker color. If you saturate the color by 10%, you get **11958387**, and if you desaturate by 10%, it is **11967127**.

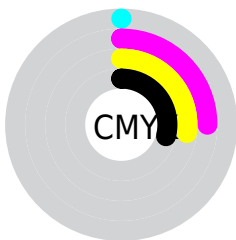
Distribution



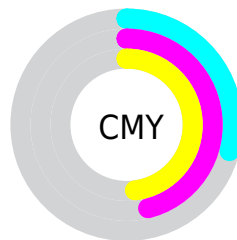
- Red (71%)
- Green (54%)
- Blue (52%)



- Red (71%)
- Yellow (54%)
- Blue (52%)



- Cyan (0%)
- Magenta (25%)
- Yellow (27%)
- Black (29%)



- Cyan (29%)
- Magenta (46%)
- Yellow (48%)

Brightness & Saturation Gradients

These gradients show how the Decimal color 11962757 changes by changing the brightness by 10 percent. The first figure shows a shift by +10% for each color and the second figure -10%.

Similar to the brightness gradients but the following saturation gradients show a change of the Decimal color 11962757 by changing the saturation by 10% instead.



11962757



11962757

16777215



10186604



15712186



8410964



16767702



6700860



16775154



5056807



3478546



2162688



0



11962757



11962757



11958387



11967127

 11954273

 11971241

 11949902

 11975612

 11945532

 11979982

 11941162

 11984352

 11937048

 11988466

 11932678

 11992831

 11931392

 11993087

Harmonies

Analogous

The Analogous color harmony consists of three colors that are next to each other on the color wheel.



11831446



11962757



11505016

Triad

The Triadic color harmony groups three colors that are evenly spaced from another and form a triangle on the color wheel.



11962757



8231810



8361653

Complementary

The Complementary color scheme is a pair of colors which are on the opposite of each other on the color wheel.



11962757



8762038

Split Complementary

Split-complementary colors differ from the complementary color scheme. The scheme consists of three colors, the original color and two neighbors of the complement color.



7183023



11962757



7183762

Square

The Square scheme is like the rectangle color scheme, but the four colors are evenly spaced on the color wheel.



11962757



9476214



6725027



9801905

Rectangle

The Rectangle color scheme consists of four colors that form a rectangle on the color wheel.



11962757



10981492



6725027



7903156

Sweetspot

The Sweet Spot groups the original color and five complimentary colors.



11962757



15588570



11961779



7892332



16250871



7895160

Same Dimension

The Same Dimension uses a secret algorithm to generate beautiful new colors.



11962757



15574945



11968901



6050643



10226944



1835520

Inverse Universe

The Inverse Universe completely reimagines the original color for something new.



8762038



10610669



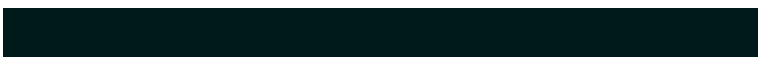
8755894



5462876



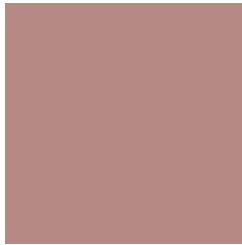
36764



6684

Previews

White Background



This preview shows how the Decimal color 11962757 looks on a white background.

Color Contrast Check

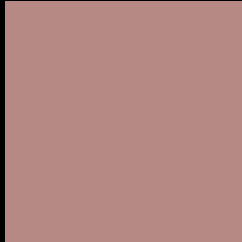
Large Text (above 18pt) WCAG AA ✓ Pass

Any Text WCAG AA ✗ Fail

Large Text (above 18pt) WCAG AAA ✗ Fail

Any Text WCAG AAA ✗ Fail

Black Background



This preview shows how the Decimal color 11962757 looks on a black background.

Color Contrast Check

Large Text (above 18pt) WCAG AA ✓ Pass

Any Text WCAG AA ✓ Pass

Large Text (above 18pt) WCAG AAA ✓ Pass

Any Text WCAG AAA × Fail

If you want to check with other color combinations, try the [Color Contrast Checker](#).

Decimal 11962757 Background



This preview shows how black text looks on a background with the Decimal color 11962757.



This preview shows how white text looks on a background with the Decimal color 11962757.

Color Blindness Simulation

Color vision deficiency is a very complex topic, and I could not describe the different causes any better than Wikipedia does, so if you want to learn more, you should check out their [article about color blindness](#).

Dichromacy





Tritanopia
12027793

Trichromacy



Original Color
11962757

Protanomaly
10784905

Deuteranomaly
11373956

Tritanomaly
12028045

Monochromacy



Original Color
11962757

Achromatopsia
9868950

Achromatomaly
10654096

CSS Examples

Text

The CSS property to change the color of the text to Decimal 11962757 is called "color". The color property can be set on classes, ids or directly on the HTML element.

This example shows how text in the color #B68985 looks like.

```
.text, #text, p{  
    color:#B68985  
}
```

If you want to add a text shadow in that color use the text-shadow property, you can generate a text shadow directly with our [CSS Text Shadow Generator](#).

Here you see how black text with a 4 pixel #B68985 colored shadow looks like.

```
.shadow{ text-shadow: 4px 4px 2px #B68985
}
```

Border

The CSS property to change the border of an element to Decimal 11962757 is called "border". The border property can be set on classes, ids or directly on the HTML element.

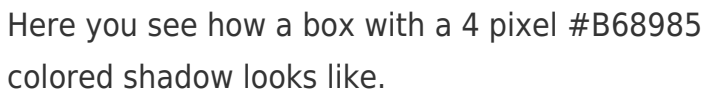
This example shows the color as border, it can be applied via the CSS property "border" or "border-color".

```
.border, #border, table{ border:4px solid
#B68985 }
```

If only the border color should be changed use the property `border-color`.

```
.border{ border-color:#B68985 }
```

If you want to add a box shadow in that color use:



Here you see how a box with a 4 pixel #B68985 colored shadow looks like.

```
.boxshadow{ -moz-box-shadow:4px 4px 4px  
4px #B68985; -webkit-box-shadow:4px 4px  
4px 4px #B68985; box-shadow:4px 4px 4px  
4px #B68985 }
```

Background

The CSS property to change the background color of an element to Decimal 11962757 is called "background". The background property can be set on classes, ids or directly on the HTML element.

```
.background, #background, body{  
background:#B68985 }
```

If only the background color should be changed can be used:

```
.background{ background-color:#B68985 }
```

This example shows the color as background, it is applied via the CSS property "background".

To optimize and compress your CSS code, you can use our [online CSS compressor and optimizer](#) based on csstidy. If you want to create a linear or radial gradient as background or border, check our [CSS Gradient Generator](#).

Hey! You found this booklet interesting? Support Converting Colors with the new Membership Option!

The pro membership hides all ads, plus gives you double the colors in the color bucket, and more awesome pro features!

[Learn more, Memberships starting at \\$2.50/m!](#)

**Follow me
on Twitter!**

@ConvertingColor