

Converting Colors

Decimal(11963272)

Have a look what the booklet for
Decimal(11963272) contains.

Decimal(11963272)	3
<i>Conversions</i>	4
<i>Details</i>	6
<i>Harmonies</i>	11
<i>Previews</i>	23
<i>Color Blindness Simulation</i>	26
<i>CSS Examples</i>	29

Color

Decimal(11963272)

Conversions

Conversions Part 1

Format	Color
Hex	B68B88
RGB	182, 139, 136
RGB Percent	71%, 55%, 53%
CMY	0.2863, 0.4549, 0.4667
CMYK	0.00, 0.24, 0.25, 0.29
HSL	4°, 24%, 62%
HSV	4°, 25%, 71%
XYZ	32.9680, 30.1879, 27.3818
YIQ	151.5150, 26.5910, 8.1830

Conversions

Conversions Part 2

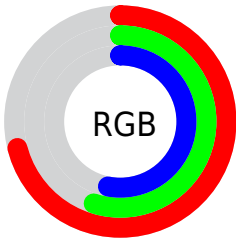
Format	Color
RYB	182, 139, 136
Decimal	11963272
CIELab	61.82, 15.89, 7.93
CIElCh	62, 17.760, 26.503
Yxy	30.1879, 0.3641, 0.3334
Android (android.graphics.Color)	4290153352 (0xFFB68B88)
YUV	151.5150, -7.6489, 26.7353
Hunter-Lab	54.9435, 10.9549, 8.9125

Details

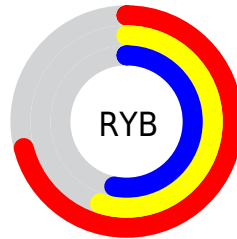
The Decimal color **11963272** is a light color, and the websafe version is hex **CC9999**. A complement of this color would be **8958902**, and the grayscale version is **10000536**.

A 20% lighter version of the original color is **15712701**, and **8411478** is the 20% darker color. If you saturate the color by 10%, you get **11958902**, and if you desaturate by 10%, it is **11967642**.

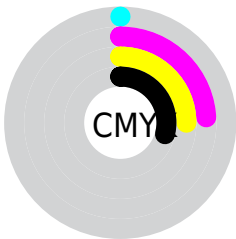
Distribution



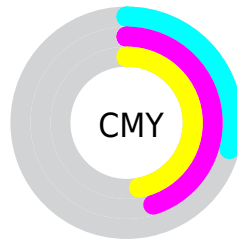
- Red (71%)
- Green (55%)
- Blue (53%)



- Red (71%)
- Yellow (55%)
- Blue (53%)



- Cyan (0%)
- Magenta (24%)
- Yellow (25%)
- Black (29%)



- Cyan (29%)
- Magenta (45%)
- Yellow (47%)

Brightness & Saturation Gradients

These gradients show how the Decimal color 11963272 changes by changing the brightness by 10 percent. The first figure shows a shift by +10% for each color and the second figure -10%.

Similar to the brightness gradients but the following saturation gradients show a change of the Decimal color 11963272 by changing the saturation by 10% instead.

 11963272

 11963272

16777215

 10187119

 15712701

 8411478

 16768473

 6701375

 16775669

 5057321

 3479061

 2228224

 0

 11963272

 11963272

 11958902

 11967642

 11954532

 11972012

 11950161

 11976383

 11945791

 11980753

 11941421

 11985123

 11937051

 11989493

 11932681

 11993087

 11930624

Harmonies

Analogous

The Analogous color harmony consists of three colors that are next to each other on the color wheel.



11766424



11963272



11571068

Triad

The Triadic color harmony groups three colors that are evenly spaced from another and form a triangle on the color wheel.



11963272



8428676



8492980

Complementary

The Complementary color scheme is a pair of colors which are on the opposite of each other on the color wheel.



11963272



8958902

Split Complementary

Split-complementary colors differ from the complementary color scheme. The scheme consists of three colors, the original color and two neighbors of the complement color.



7380143



11963272



7446163

Square

The Square scheme is like the rectangle color scheme, but the four colors are evenly spaced on the color wheel.



11963272



9607545



6987427



9867953

Rectangle

The Rectangle color scheme consists of four colors that form a rectangle on the color wheel.



11963272



11047543



6987427



8034739

Sweetspot

The Sweet Spot groups the original color and five complimentary colors.



11963272



15588314



11962548



7892332



16250871



7895160

Same Dimension

The Same Dimension uses a secret algorithm to generate beautiful new colors.



11963272



15575974



11968904



6050643



10226176



1835520

Inverse Universe

The Inverse Universe completely reimagines the original color for something new.



8958902



10938861



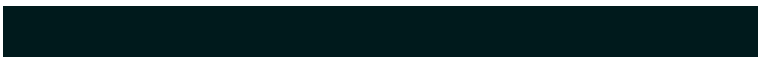
8953270



5462876



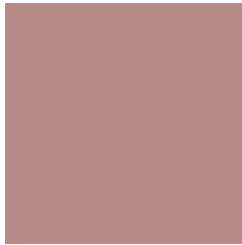
37276



6684

Previews

White Background



This preview shows how the Decimal color 11963272 looks on a white background.

Color Contrast Check

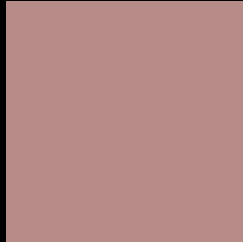
Large Text (above 18pt) WCAG AA × Fail

Any Text WCAG AA × Fail

Large Text (above 18pt) WCAG AAA × Fail

Any Text WCAG AAA × Fail

Black Background



This preview shows how the Decimal color 11963272 looks on a black background.

Color Contrast Check

Large Text (above 18pt) WCAG AA ✓ Pass

Any Text WCAG AA ✓ Pass

Large Text (above 18pt) WCAG AAA ✓ Pass

Any Text WCAG AAA ✓ Pass

If you want to check with other color combinations, try the [Color Contrast Checker](#).

Decimal 11963272 Background



This preview shows how black text looks on a background with the Decimal color 11963272.



This preview shows how white text looks on a background with the Decimal color 11963272.

Color Blindness Simulation

Color vision deficiency is a very complex topic, and I could not describe the different causes any better than Wikipedia does, so if you want to learn more, you should check out their [article about color blindness](#).

Dichromacy



Original Color
[11963272](#)

Protanopia
[10130829](#)

Deuteranopia
[11112583](#)



Tritanopia
12028308

Trichromacy



Original Color
11963272

Protanomaly
10785163

Deuteranomaly
11439751

Tritanomaly
12028560

Monochromacy



Original Color
11963272

Achromatopsia
10000536

Achromatomaly
10720146

CSS Examples

Text

The CSS property to change the color of the text to Decimal 11963272 is called "color". The color property can be set on classes, ids or directly on the HTML element.

This example shows how text in the color #B68B88 looks like.

```
.text, #text, p{  
    color:#B68B88  
}
```

If you want to add a text shadow in that color use the text-shadow property, you can generate a text shadow directly with our [CSS Text Shadow Generator](#).

Here you see how black text with a 4 pixel #B68B88 colored shadow looks like.

```
.shadow{ text-shadow: 4px 4px 2px #B68B88
}
```

Border

The CSS property to change the border of an element to Decimal 11963272 is called "border". The border property can be set on classes, ids or directly on the HTML element.

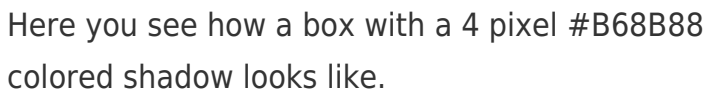
This example shows the color as border, it can be applied via the CSS property "border" or "border-color".

```
.border, #border, table{ border:4px solid
#B68B88 }
```

If only the border color should be changed use the property `border-color`.

```
.border{ border-color:#B68B88 }
```

If you want to add a box shadow in that color use:



Here you see how a box with a 4 pixel #B68B88 colored shadow looks like.

```
.boxshadow{ -moz-box-shadow:4px 4px 4px  
4px #B68B88; -webkit-box-shadow:4px 4px  
4px 4px #B68B88; box-shadow:4px 4px 4px  
4px #B68B88 }
```

Background

The CSS property to change the background color of an element to Decimal 11963272 is called "background". The background property can be set on classes, ids or directly on the HTML element.

```
.background, #background, body{  
background:#B68B88 }
```

If only the background color should be changed can be used:

```
.background{ background-color:#B68B88 }
```

This example shows the color as background, it is applied via the CSS property "background".

To optimize and compress your CSS code, you can use our [online CSS compressor and optimizer](#) based on csstidy. If you want to create a linear or radial gradient as background or border, check our [CSS Gradient Generator](#).

Hey! You found this booklet interesting? Support Converting Colors with the new Membership Option!

The pro membership hides all ads, plus gives you double the colors in the color bucket, and more awesome pro features!

[Learn more, Memberships starting at \\$2.50/m!](#)

**Follow me
on Twitter!**

@ConvertingColor