

# Converting Colors

Decimal(11963275)

Have a look what the booklet for  
Decimal(11963275) contains.

<b>Decimal(11963275)</b> .....	3
<i><b>Conversions</b></i> .....	4
<i><b>Details</b></i> .....	6
<i><b>Harmonies</b></i> .....	11
<i><b>Previews</b></i> .....	23
<i><b>Color Blindness Simulation</b></i> .....	26
<i><b>CSS Examples</b></i> .....	29

# **Color**

**Decimal(11963275)**

# Conversions

## Conversions Part 1

Format	Color
Hex	B68B8B
RGB	182, 139, 139
RGB Percent	71%, 55%, 55%
CMY	0.2863, 0.4549, 0.4549
CMYK	0.00, 0.24, 0.24, 0.29
HSL	0°, 23%, 63%
HSV	0°, 24%, 71%
XYZ	33.1842, 30.2744, 28.5206
YIQ	151.8570, 25.6280, 9.1160

# Conversions

## Conversions Part 2

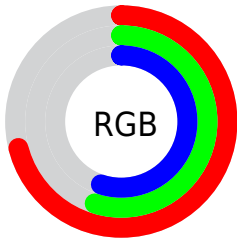
Format	Color
<a href="#">RYB</a>	<a href="#">182, 139, 139</a>
Decimal	<a href="#">11963275</a>
CIELab	<a href="#">61.89, 16.34, 6.33</a>
CIElCh	<a href="#">62, 17.523, 21.166</a>
Yxy	<a href="#">30.2744, 0.3608, 0.3291</a>
Android (android.graphics.Color)	<a href="#">4290153355 (0xFFB68B8B)</a>
YUV	<a href="#">151.8570, -6.3385, 26.4354</a>
Hunter-Lab	<a href="#">55.0222, 11.3657, 7.7827</a>

# Details

The Decimal color **11963275** is a light color, and the websafe version is hex **CC9999**. A complement of this color would be **9156278**, and the grayscale version is **10000536**.

A 20% lighter version of the original color is **15712704**, and **8411481** is the 20% darker color. If you saturate the color by 10%, you get **11958649**, and if you desaturate by 10%, it is **11967901**.

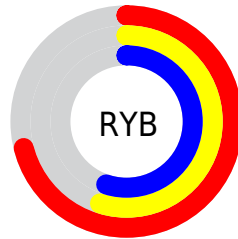
# Distribution



Red (71%)

Green (55%)

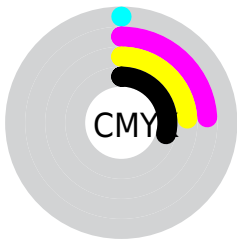
Blue (55%)



Red (71%)

Yellow (55%)

Blue (55%)

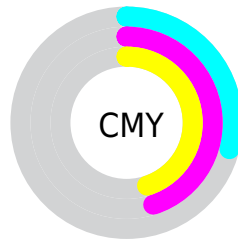


Cyan (0%)

Magenta (24%)

Yellow (24%)

Black (29%)



Cyan (29%)

Magenta (45%)

Yellow (45%)

# Brightness & Saturation Gradients

These gradients show how the Decimal color 11963275 changes by changing the brightness by 10 percent. The first figure shows a shift by +10% for each color and the second figure -10%.

Similar to the brightness gradients but the following saturation gradients show a change of the Decimal color 11963275 by changing the saturation by 10% instead.



 11963275

 11963275

16777215

 10187122

 15712704

 8411481

 16768476

 6701378

 16775673

 5122860

 3544343

 2228224

 0

 11963275

 11963275

 11958649

 11967901

 11954023

 11972527

 11949140

 11977410

 11944514

 11982036

 11939888

 11986662

 11935262

 11991288

 11930636

 11993087

 11927552

# Harmonies

## Analogous

The Analogous color harmony consists of three colors that are next to each other on the color wheel.



11701147



11963275



11701886

# Triad

The Triadic color harmony groups three colors that are evenly spaced from another and form a triangle on the color wheel.



11963275



8690818



8296628

# Complementary

The Complementary color scheme is a pair of colors which are on the opposite of each other on the color wheel.



11963275



9156278

# Split Complementary

Split-complementary colors differ from the complementary color scheme. The scheme consists of three colors, the original color and two neighbors of the complement color.



7314605



11963275



7642768

# Square

The Square scheme is like the rectangle color scheme, but the four colors are evenly spaced on the color wheel.



11963275



9869432



7118496



9606066

# Rectangle

The Rectangle color scheme consists of four colors that form a rectangle on the color wheel.



11963275



11178361



7118496



7903922



# Sweetspot

The Sweet Spot groups the original color and five complimentary colors.



11963275



15588829



11963318



7892590



16250871



7895160



# Same Dimension

The Same Dimension uses a secret algorithm to generate beautiful new colors.



11963275



15575979



11968907



6050643



10223616



1835008



# Inverse Universe

The Inverse Universe completely reimagines the original color for something new.



9156278



11267565



9150902



5463132



40092

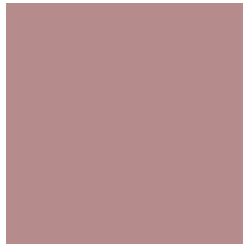


7196



# Previews

## White Background



This preview shows how the Decimal color 11963275 looks on a white background.

## Color Contrast Check

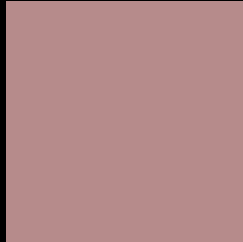
Large Text (above 18pt) WCAG AA × Fail

Any Text WCAG AA × Fail

Large Text (above 18pt) WCAG AAA × Fail

Any Text WCAG AAA × Fail

# Black Background



This preview shows how the Decimal color 11963275 looks on a black background.

## Color Contrast Check

Large Text (above 18pt) WCAG AA ✓ Pass

Any Text WCAG AA ✓ Pass

Large Text (above 18pt) WCAG AAA ✓ Pass

Any Text WCAG AAA ✓ Pass

If you want to check with other color combinations, try the [Color Contrast Checker](#).



## Decimal 11963275 Background



This preview shows how black text looks on a background with the Decimal color 11963275.



This preview shows how white text looks on a background with the Decimal color 11963275.

# Color Blindness Simulation

Color vision deficiency is a very complex topic, and I could not describe the different causes any better than Wikipedia does, so if you want to learn more, you should check out their [article about color blindness](#).

## Dichromacy





**Tritanopia**  
12028564

# Trichromacy



**Original Color**  
11963275

**Protanomaly**  
10785167

**Deuteranomaly**  
11440010

**Tritanomaly**  
12028561

# Monochromacy



**Original Color**  
11963275

**Achromatopsia**  
10000536

**Achromatomaly**  
10720147

# CSS Examples

## Text

The CSS property to change the color of the text to Decimal 11963275 is called "color". The color property can be set on classes, ids or directly on the HTML element.

This example shows how text in the color #B68B8B looks like.

```
.text, #text, p{  
    color:#B68B8B  
}
```

If you want to add a text shadow in that color use the text-shadow property, you can generate a text shadow directly with our [CSS Text Shadow Generator](#).

Here you see how black text with a 4 pixel #B68B8B colored shadow looks like.

```
.shadow{ text-shadow: 4px 4px 2px #B68B8B
}
```

## Border

The CSS property to change the border of an element to Decimal 11963275 is called "border". The border property can be set on classes, ids or directly on the HTML element.

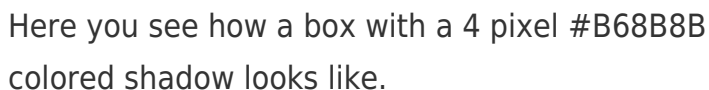
This example shows the color as border, it can be applied via the CSS property "border" or "border-color".

```
.border, #border, table{ border:4px solid
#B68B8B }
```

If only the border color should be changed use the property `border-color`.

```
.border{ border-color:#B68B8B }
```

If you want to add a box shadow in that color use:



Here you see how a box with a 4 pixel #B68B8B colored shadow looks like.

```
.boxshadow{ -moz-box-shadow:4px 4px 4px  
4px #B68B8B; -webkit-box-shadow:4px 4px  
4px 4px #B68B8B; box-shadow:4px 4px 4px  
4px #B68B8B }
```

# Background

The CSS property to change the background color of an element to Decimal 11963275 is called "background". The background property can be set on classes, ids or directly on the HTML element.

```
.background, #background, body{  
background:#B68B8B }
```

If only the background color should be changed can be used:

```
.background{ background-color:#B68B8B }
```

This example shows the color as background, it is applied via the CSS property "background".

To optimize and compress your CSS code, you can use our [online CSS compressor and optimizer](#) based on csstidy. If you want to create a linear or radial gradient as background or border, check our [CSS Gradient Generator](#).



Hey! You found this booklet interesting? Support Converting Colors with the new Membership Option!

The pro membership hides all ads, plus gives you double the colors in the color bucket, and more awesome pro features!

**[Learn more, Memberships starting at \\$2.50/m!](#)**

**Follow me  
on Twitter!**

@ConvertingColor