

Converting Colors

Decimal(11964030)

Have a look what the booklet for
Decimal(11964030) contains.

Decimal(11964030)	3
<i>Conversions</i>	4
<i>Details</i>	6
<i>Harmonies</i>	11
<i>Previews</i>	23
<i>Color Blindness Simulation</i>	26
<i>CSS Examples</i>	29

Color

Decimal(11964030)

Conversions

Conversions Part 1

Format	Color
Hex	B68E7E
RGB	182, 142, 126
RGB Percent	71%, 56%, 49%
CMY	0.2863, 0.4431, 0.5059
CMYK	0.00, 0.22, 0.31, 0.29
HSL	17°, 28%, 60%
HSV	17°, 31%, 71%
XYZ	32.7303, 30.7974, 23.9581
YIQ	152.1360, 28.9760, 3.5040

Conversions

Conversions Part 2

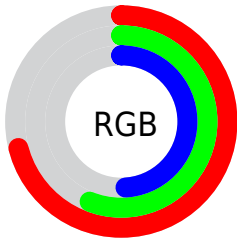
Format	Color
RYB	182, 148, 126
Decimal	11964030
CIELab	62.34, 12.81, 14.32
CIELCh	62, 19.210, 48.196
Yxy	30.7974, 0.3741, 0.3520
Android (android.graphics.Color)	4290154110 (0xFFB68E7E)
YUV	152.1360, -12.8850, 26.1907
Hunter-Lab	55.4954, 8.1593, 13.2506

Details

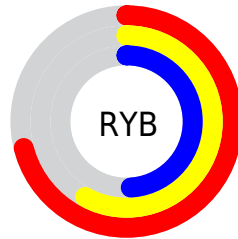
The Decimal color **11964030** is a dark color, and the websafe version is hex **CC9999**. A complement of this color would be **8300214**, and the grayscale version is **10000536**.

A 20% lighter version of the original color is **15713459**, and **8412237** is the 20% darker color. If you saturate the color by 10%, you get **11960684**, and if you desaturate by 10%, it is **11967376**.

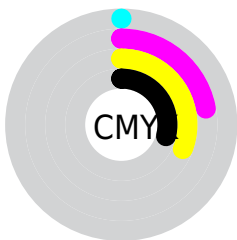
Distribution



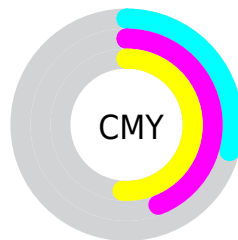
- Red (71%)
- Green (56%)
- Blue (49%)



- Red (71%)
- Yellow (58%)
- Blue (49%)



- Cyan (0%)
- Magenta (22%)
- Yellow (31%)
- Black (29%)



- Cyan (29%)
- Magenta (44%)
- Yellow (51%)

Brightness & Saturation Gradients

These gradients show how the Decimal color 11964030 changes by changing the brightness by 10 percent. The first figure shows a shift by +10% for each color and the second figure -10%.

Similar to the brightness gradients but the following saturation gradients show a change of the Decimal color 11964030 by changing the saturation by 10% instead.

 11964030

 11964030

16777215

 10187877

 15713459

 8412237

 16769230

 6702134

 16776426

 5058081

 3479819

 2097152

 0

 11964030

 11964030

 11960684

 11967376

 11957338

 11970722

 11953991

 11974069

 11950645

 11977415

 11947299

 11980761

 11943953

 11984107

 11940864

 11987453

 11990783

 11993087

Harmonies

Analogous

The Analogous color harmony consists of three colors that are next to each other on the color wheel.



12225421



11964030



11178870

Triad

The Triadic color harmony groups three colors that are evenly spaced from another and form a triangle on the color wheel.



11964030



7577743



9541047

Complementary

The Complementary color scheme is a pair of colors which are on the opposite of each other on the color wheel.



11964030



8300214

Split Complementary

Split-complementary colors differ from the complementary color scheme. The scheme consists of three colors, the original color and two neighbors of the complement color.



8035000



11964030



6856865

Square

The Square scheme is like the rectangle color scheme, but the four colors are evenly spaced on the color wheel.



11964030



8756608



6987439



10915758

Rectangle

The Rectangle color scheme consists of four colors that form a rectangle on the color wheel.



11964030



10458997



6987439



9017272

Sweetspot

The Sweet Spot groups the original color and five complimentary colors.



11964030



15589080



11959974



7892587



16250871



7895160

Same Dimension

The Same Dimension uses a secret algorithm to generate beautiful new colors.



11964030



15576725



11971198



6051155



10234880



1837056

Inverse Universe

The Inverse Universe completely reimagines the original color for something new.



8300214



9819373



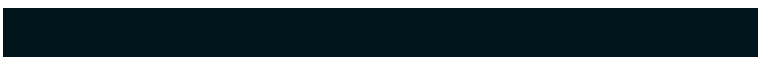
8293046



5462364



28572



5148

Previews

White Background



This preview shows how the Decimal color 11964030 looks on a white background.

Color Contrast Check

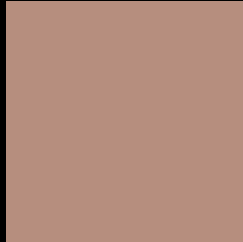
Large Text (above 18pt) WCAG AA × Fail

Any Text WCAG AA × Fail

Large Text (above 18pt) WCAG AAA × Fail

Any Text WCAG AAA × Fail

Black Background



This preview shows how the Decimal color 11964030 looks on a black background.

Color Contrast Check

Large Text (above 18pt) WCAG AA ✓ Pass

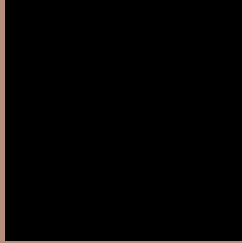
Any Text WCAG AA ✓ Pass

Large Text (above 18pt) WCAG AAA ✓ Pass

Any Text WCAG AAA ✓ Pass

If you want to check with other color combinations, try the [Color Contrast Checker](#).

Decimal 11964030 Background



This preview shows how black text looks on a background with the Decimal color 11964030.




This preview shows how white text looks on a background with the Decimal color 11964030.

Color Blindness Simulation

Color vision deficiency is a very complex topic, and I could not describe the different causes any better than Wikipedia does, so if you want to learn more, you should check out their [article about color blindness](#).

Dichromacy





Tritanopia
12094357

Trichromacy



Original Color
11964030

Protanomaly
10982529

Deuteranomaly
11636861

Tritanomaly
12029069

Monochromacy



Original Color
11964030

Achromatopsia
10000536

Achromatomaly
10720399

CSS Examples

Text

The CSS property to change the color of the text to Decimal 11964030 is called "color". The color property can be set on classes, ids or directly on the HTML element.

This example shows how text in the color #B68E7E looks like.

```
.text, #text, p{  
  color:#B68E7E  
}
```

If you want to add a text shadow in that color use the text-shadow property, you can generate a text shadow directly with our [CSS Text Shadow Generator](#).

Here you see how black text with a 4 pixel #B68E7E colored shadow looks like.

```
.shadow{ text-shadow: 4px 4px 2px #B68E7E
}
```

Border

The CSS property to change the border of an element to Decimal 11964030 is called "border". The border property can be set on classes, ids or directly on the HTML element.

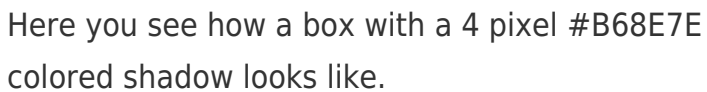
This example shows the color as border, it can be applied via the CSS property "border" or "border-color".

```
.border, #border, table{ border:4px solid
#B68E7E }
```

If only the border color should be changed use the property `border-color`.

```
.border{ border-color:#B68E7E }
```

If you want to add a box shadow in that color use:



Here you see how a box with a 4 pixel #B68E7E colored shadow looks like.

```
.boxshadow{ -moz-box-shadow:4px 4px 4px  
4px #B68E7E; -webkit-box-shadow:4px 4px  
4px 4px #B68E7E; box-shadow:4px 4px 4px  
4px #B68E7E }
```

Background

The CSS property to change the background color of an element to Decimal 11964030 is called "background". The background property can be set on classes, ids or directly on the HTML element.

```
.background, #background, body{  
background:#B68E7E }
```

If only the background color should be changed can be used:

```
.background{ background-color:#B68E7E }
```

This example shows the color as background, it is applied via the CSS property "background".

To optimize and compress your CSS code, you can use our [online CSS compressor and optimizer](#) based on csstidy. If you want to create a linear or radial gradient as background or border, check our [CSS Gradient Generator](#).

Hey! You found this booklet interesting? Support Converting Colors with the new Membership Option!

The pro membership hides all ads, plus gives you double the colors in the color bucket, and more awesome pro features!

[Learn more, Memberships starting at \\$2.50/m!](#)

**Follow me
on Twitter!**

@ConvertingColor