

Converting Colors

Decimal(11964037)

Have a look what the booklet for
Decimal(11964037) contains.

Decimal(11964037)	3
<i>Conversions</i>	4
<i>Details</i>	6
<i>Harmonies</i>	11
<i>Previews</i>	23
<i>Color Blindness Simulation</i>	26
<i>CSS Examples</i>	29

Color

Decimal(11964037)

Conversions

Conversions Part 1

Format	Color
Hex	B68E85
RGB	182, 142, 133
RGB Percent	71%, 56%, 52%
CMY	0.2863, 0.4431, 0.4784
CMYK	0.00, 0.22, 0.27, 0.29
HSL	11°, 25%, 62%
HSV	11°, 27%, 71%
XYZ	33.1980, 30.9845, 26.4212
YIQ	152.9340, 26.7290, 5.6810

Conversions

Conversions Part 2

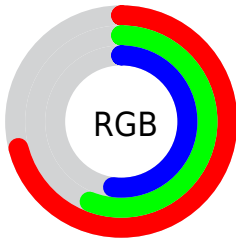
Format	Color
RYB	182, 144, 133
Decimal	11964037
CIELab	62.49, 13.78, 10.59
CIElCh	62, 17.382, 37.531
Yxy	30.9845, 0.3664, 0.3420
Android (android.graphics.Color)	4290154117 (0xFFB68E85)
YUV	152.9340, -9.8275, 25.4909
Hunter-Lab	55.6638, 9.0464, 10.8222

Details

The Decimal color **11964037** is a light color, and the websafe version is hex **CC9999**. A complement of this color would be **8760758**, and the grayscale version is **10066329**.

A 20% lighter version of the original color is **15713466**, and **8412244** is the 20% darker color. If you saturate the color by 10%, you get **11960179**, and if you desaturate by 10%, it is **11967895**.

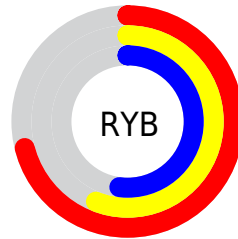
Distribution



Red (71%)

Green (56%)

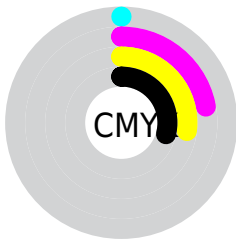
Blue (52%)



Red (71%)

Yellow (56%)

Blue (52%)

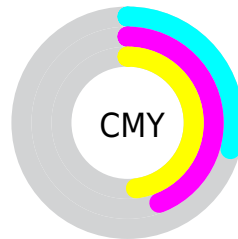


Cyan (0%)

Magenta (22%)

Yellow (27%)

Black (29%)



Cyan (29%)

Magenta (44%)

Yellow (48%)

Brightness & Saturation Gradients

These gradients show how the Decimal color 11964037 changes by changing the brightness by 10 percent. The first figure shows a shift by +10% for each color and the second figure -10%.


Similar to the brightness gradients but the following saturation gradients show a change of the Decimal color 11964037 by changing the saturation by 10% instead.

 11964037  11964037

16777215  10187884

 15713466  8412244

 16769238  6702140

 16776434  5057831

 3479570

 2162688

 0

 11964037  11964037

 11960179  11967895

 11956321

 11971753

 11952462

 11975612

 11948860

 11979214

 11945002

 11983072

 11941144

 11986930

 11937286

 11990783

 11936000

 11993087

Harmonies

Analogous

The Analogous color harmony consists of three colors that are next to each other on the color wheel.



12029076



11964037



11375227

Triad

The Triadic color harmony groups three colors that are evenly spaced from another and form a triangle on the color wheel.



11964037



8232843



9148341

Complementary

The Complementary color scheme is a pair of colors which are on the opposite of each other on the color wheel.



11964037



8760758

Split Complementary

Split-complementary colors differ from the complementary color scheme. The scheme consists of three colors, the original color and two neighbors of the complement color.



7904435



11964037



7381147

Square

The Square scheme is like the rectangle color scheme, but the four colors are evenly spaced on the color wheel.



11964037



9346174



7249833



10457776

Rectangle

The Rectangle color scheme consists of four colors that form a rectangle on the color wheel.



11964037



10786424



7249833



8690102

Sweetspot

The Sweet Spot groups the original color and five complimentary colors.



11964037



15589082



11961773



7892588



16250871



7895160

Same Dimension

The Same Dimension uses a secret algorithm to generate beautiful new colors.



11964037



15576993



11970181



6050899



10231040



1836288

Inverse Universe

The Inverse Universe completely reimagines the original color for something new.



8760758



10608621



8754614



5462620



32668



5916

Previews

White Background



This preview shows how the Decimal color 11964037 looks on a white background.

Color Contrast Check

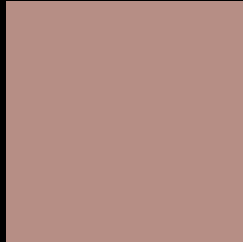
Large Text (above 18pt) WCAG AA × Fail

Any Text WCAG AA × Fail

Large Text (above 18pt) WCAG AAA × Fail

Any Text WCAG AAA × Fail

Black Background



This preview shows how the Decimal color 11964037 looks on a black background.

Color Contrast Check

Large Text (above 18pt) WCAG AA ✓ Pass

Any Text WCAG AA ✓ Pass

Large Text (above 18pt) WCAG AAA ✓ Pass

Any Text WCAG AAA ✓ Pass

If you want to check with other color combinations, try the [Color Contrast Checker](#).

Decimal 11964037 Background



This preview shows how black text looks on a background with the Decimal color 11964037.



This preview shows how white text looks on a background with the Decimal color 11964037.

Color Blindness Simulation

Color vision deficiency is a very complex topic, and I could not describe the different causes any better than Wikipedia does, so if you want to learn more, you should check out their [article about color blindness](#).


Dichromacy



Original Color
11964037

Protanopia
10327946

Deuteranopia
11375236



Tritanopia
12094358

Trichromacy



Original Color
11964037

Protanomaly
10917000

Deuteranomaly
11571588

Tritanomaly
12029072

Monochromacy



Original Color
11964037

Achromatopsia
10066329

Achromatomaly
10786194

CSS Examples

Text

The CSS property to change the color of the text to Decimal 11964037 is called "color". The color property can be set on classes, ids or directly on the HTML element.

This example shows how text in the color #B68E85 looks like.

```
.text, #text, p{  
  color:#B68E85  
}
```

If you want to add a text shadow in that color use the text-shadow property, you can generate a text shadow directly with our [CSS Text Shadow Generator](#).

Here you see how black text with a 4 pixel #B68E85 colored shadow looks like.

```
.shadow{ text-shadow: 4px 4px 2px #B68E85
}
```

Border

The CSS property to change the border of an element to Decimal 11964037 is called "border". The border property can be set on classes, ids or directly on the HTML element.

This example shows the color as border, it can be applied via the CSS property "border" or "border-color".

```
.border, #border, table{ border:4px solid
#B68E85 }
```

If only the border color should be changed use the property `border-color`.

```
.border{ border-color:#B68E85 }
```

If you want to add a box shadow in that color use:

Here you see how a box with a 4 pixel #B68E85 colored shadow looks like.

```
.boxshadow{ -moz-box-shadow:4px 4px 4px  
4px #B68E85; -webkit-box-shadow:4px 4px  
4px 4px #B68E85; box-shadow:4px 4px 4px  
4px #B68E85 }
```

Background

The CSS property to change the background color of an element to Decimal 11964037 is called "background". The background property can be set on classes, ids or directly on the HTML element.

```
.background, #background, body{  
background:#B68E85 }
```

If only the background color should be changed can be used:

```
.background{ background-color:#B68E85 }
```

This example shows the color as background, it is applied via the CSS property "background".

To optimize and compress your CSS code, you can use our [online CSS compressor and optimizer](#) based on csstidy. If you want to create a linear or radial gradient as background or border, check our [CSS Gradient Generator](#).

Hey! You found this booklet interesting? Support Converting Colors with the new Membership Option!

The pro membership hides all ads, plus gives you double the colors in the color bucket, and more awesome pro features!

[Learn more, Memberships starting at \\$2.50/m!](#)

**Follow me
on Twitter!**

@ConvertingColor