

Converting Colors

Decimal(11964815)

Have a look what the booklet for
Decimal(11964815) contains.

| | |
|--|----|
| Decimal(11964815) | 3 |
| <i>Conversions</i> | 4 |
| <i>Details</i> | 6 |
| <i>Harmonies</i> | 11 |
| <i>Previews</i> | 23 |
| <i>Color Blindness Simulation</i> | 26 |
| <i>CSS Examples</i> | 29 |

Color

Decimal(11964815)

Conversions

Conversions Part 1

| Format | Color |
|-------------|---------------------------|
| Hex | B6918F |
| RGB | 182, 145, 143 |
| RGB Percent | 71%, 57%, 56% |
| CMY | 0.2863, 0.4314, 0.4392 |
| CMYK | 0.00, 0.20, 0.21, 0.29 |
| HSL | 3°, 21%, 64% |
| HSV | 3°, 21%, 71% |
| XYZ | 34.3747, 32.1791, 30.3860 |
| YIQ | 155.8350, 22.6940, 7.2220 |

Conversions

Conversions Part 2

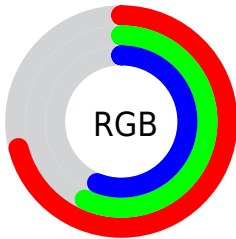
| Format | Color |
|-------------------------------------|-------------------------------|
| R _Y B | 182, 145, 143 |
| Decimal | 11964815 |
| CIE Lab | 63.49, 13.60, 6.36 |
| CIE LCh | 63, 15.015, 25.040 |
| Yxy | 32.1791, 0.3546, 0.3319 |
| Android (android.graphics.Color) | 4290154895 (0xFFB6918F) |
| YUV | 155.8350, -6.3277, 22.9467 |
| Hunter-Lab | 56.7266, 8.8945, 7.9495 |

Details

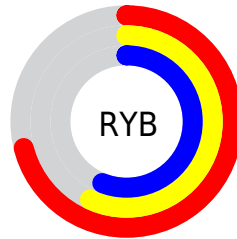
The Decimal color **11964815** is a light color, and the websafe version is hex **CC9999**. A complement of this color would be **9417910**, and the grayscale version is **10263708**.

A 20% lighter version of the original color is **15648709**, and **8412765** is the 20% darker color. If you saturate the color by 10%, you get **11960445**, and if you desaturate by 10%, it is **11969185**.

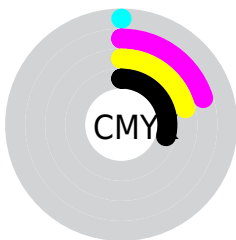
Distribution



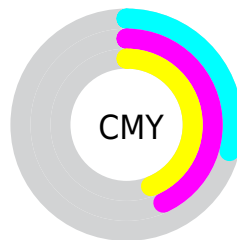
- Red (71%)
- Green (57%)
- Blue (56%)



- Red (71%)
- Yellow (57%)
- Blue (56%)



- Cyan (0%)
- Magenta (20%)
- Yellow (21%)
- Black (29%)



- Cyan (29%)
- Magenta (43%)
- Yellow (44%)

Brightness & Saturation Gradients

These gradients show how the Decimal color 11964815 changes by changing the brightness by 10 percent. The first figure shows a shift by +10% for each color and the second figure -10%.

Similar to the brightness gradients but the following saturation gradients show a change of the Decimal color 11964815 by changing the saturation by 10% instead.



11964815



11964815

16777215



10188661



15648709



8412765



16770017



6768453

16777213



5124143



3545882



2294272



0



11964815



11964815



11960445



11969185

 11955819

 11973811

 11951448

 11978182

 11947078

 11982552

 11942708

 11986922

 11938082

 11991548

 11933712

 11993087

 11929856

Harmonies

Analogous

The Analogous color harmony consists of three colors that are next to each other on the color wheel.



11768220



11964815



11637892

Triad

The Triadic color harmony groups three colors that are evenly spaced from another and form a triangle on the color wheel.



11964815



9019530



8953012

Complementary

The Complementary color scheme is a pair of colors which are on the opposite of each other on the color wheel.



11964815



9417910

Split Complementary

Split-complementary colors differ from the complementary color scheme. The scheme consists of three colors, the original color and two neighbors of the complement color.



8101807



11964815



8167831

Square

The Square scheme is like the rectangle color scheme, but the four colors are evenly spaced on the color wheel.



11964815



10001537



7840164



10065842

Rectangle

The Rectangle color scheme consists of four colors that form a rectangle on the color wheel.



11964815



11245440



7840164



8625587

Sweetspot

The Sweet Spot groups the original color and five complimentary colors.



11964815



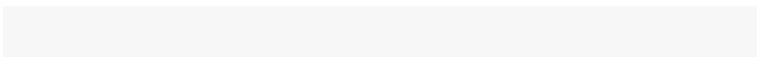
15589599



11964340



7893103



16250871



7895160

Same Dimension

The Same Dimension uses a secret algorithm to generate beautiful new colors.



11964815



15578031



11969679



6050643



10225664



1835264

Inverse Universe

The Inverse Universe completely reimagines the original color for something new.



9417910



11528941



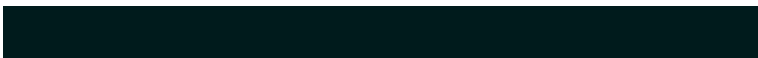
9413046



5462876



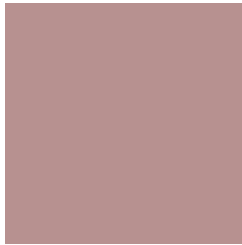
38044



6940

Previews

White Background



This preview shows how the Decimal color 11964815 looks on a white background.

Color Contrast Check

Large Text (above 18pt) WCAG AA × Fail

Any Text WCAG AA × Fail

Large Text (above 18pt) WCAG AAA × Fail

Any Text WCAG AAA × Fail

Black Background



This preview shows how the Decimal color 11964815 looks on a black background.

Color Contrast Check

Large Text (above 18pt) WCAG AA ✓ Pass

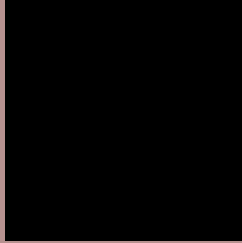
Any Text WCAG AA ✓ Pass

Large Text (above 18pt) WCAG AAA ✓ Pass

Any Text WCAG AAA ✓ Pass

If you want to check with other color combinations, try the [Color Contrast Checker](#).

Decimal 11964815 Background



This preview shows how black text looks on a background with the Decimal color 11964815.



This preview shows how white text looks on a background with the Decimal color 11964815.

Color Blindness Simulation

Color vision deficiency is a very complex topic, and I could not describe the different causes any better than Wikipedia does, so if you want to learn more, you should check out their [article about color blindness](#).

Dichromacy





Tritanopia
12029850

Trichromacy



Original Color
11964815

Protanomaly
10983058

Deuteranomaly
11572366

Tritanomaly
12030102

Monochromacy



Original Color
11964815

Achromatopsia
10263708

Achromatomaly
10852503

CSS Examples

Text

The CSS property to change the color of the text to Decimal 11964815 is called "color". The color property can be set on classes, ids or directly on the HTML element.

This example shows how text in the color #B6918F looks like.

```
.text, #text, p{  
    color:#B6918F  
}
```

If you want to add a text shadow in that color use the text-shadow property, you can generate a text shadow directly with our [CSS Text Shadow Generator](#).

Here you see how black text with a 4 pixel #B6918F colored shadow looks like.

```
.shadow{ text-shadow: 4px 4px 2px #B6918F
}
```

Border

The CSS property to change the border of an element to Decimal 11964815 is called "border". The border property can be set on classes, ids or directly on the HTML element.

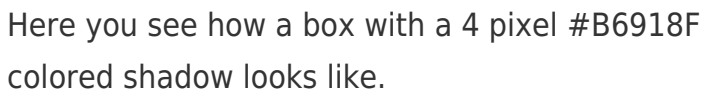
This example shows the color as border, it can be applied via the CSS property "border" or "border-color".

```
.border, #border, table{ border:4px solid
#B6918F }
```

If only the border color should be changed use the property `border-color`.

```
.border{ border-color:#B6918F }
```

If you want to add a box shadow in that color use:



Here you see how a box with a 4 pixel #B6918F colored shadow looks like.

```
.boxshadow{ -moz-box-shadow:4px 4px 4px  
4px #B6918F; -webkit-box-shadow:4px 4px  
4px 4px #B6918F; box-shadow:4px 4px 4px  
4px #B6918F }
```

Background

The CSS property to change the background color of an element to Decimal 11964815 is called "background". The background property can be set on classes, ids or directly on the HTML element.

```
.background, #background, body{  
background:#B6918F }
```

If only the background color should be changed can be used:

```
.background{ background-color:#B6918F }
```

This example shows the color as background, it is applied via the CSS property "background".

To optimize and compress your CSS code, you can use our [online CSS compressor and optimizer](#) based on csstidy. If you want to create a linear or radial gradient as background or border, check our [CSS Gradient Generator](#).

Hey! You found this booklet interesting? Support Converting Colors with the new Membership Option!

The pro membership hides all ads, plus gives you double the colors in the color bucket, and more awesome pro features!

[Learn more, Memberships starting at \\$2.50/m!](#)

**Follow me
on Twitter!**

@ConvertingColor