

Converting Colors

Decimal(11965574)

Have a look what the booklet for
Decimal(11965574) contains.

Decimal(11965574)	3
<i>Conversions</i>	4
<i>Details</i>	6
<i>Harmonies</i>	11
<i>Previews</i>	23
<i>Color Blindness Simulation</i>	26
<i>CSS Examples</i>	29

Color

Decimal(11965574)

Conversions

Conversions Part 1

Format	Color
Hex	B69486
RGB	182, 148, 134
RGB Percent	71%, 58%, 53%
CMY	0.2863, 0.4196, 0.4745
CMYK	0.00, 0.19, 0.26, 0.29
HSL	18°, 25%, 62%
HSV	18°, 26%, 71%
XYZ	34.1844, 32.8461, 27.0925
YIQ	156.5700, 24.7580, 2.8540

Conversions

Conversions Part 2

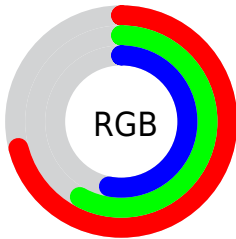
Format	Color
RYB	182, 154, 134
Decimal	11965574
CIELab	64.04, 10.59, 12.20
CIELCh	64, 16.157, 49.031
Yxy	32.8461, 0.3632, 0.3490
Android (android.graphics.Color)	4290155654 (0xFFB69486)
YUV	156.5700, -11.1270, 22.3021
Hunter-Lab	57.3115, 6.1740, 12.0903

Details

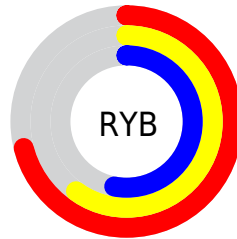
The Decimal color **11965574** is a light color, and the websafe version is hex **CC9999**. A complement of this color would be **8825014**, and the grayscale version is **10329501**.

A 20% lighter version of the original color is **15715003**, and **8413524** is the 20% darker color. If you saturate the color by 10%, you get **11962228**, and if you desaturate by 10%, it is **11968920**.

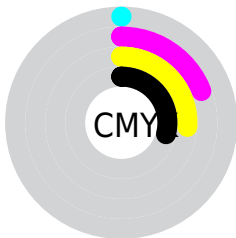
Distribution



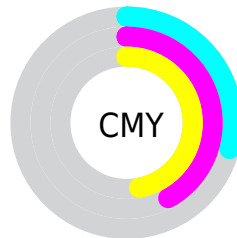
- Red (71%)
- Green (58%)
- Blue (53%)



- Red (71%)
- Yellow (60%)
- Blue (53%)



- Cyan (0%)
- Magenta (19%)
- Yellow (26%)
- Black (29%)



- Cyan (29%)
- Magenta (42%)
- Yellow (47%)

Brightness & Saturation Gradients

These gradients show how the Decimal color 11965574 changes by changing the brightness by 10 percent. The first figure shows a shift by +10% for each color and the second figure -10%.

Similar to the brightness gradients but the following saturation gradients show a change of the Decimal color 11965574 by changing the saturation by 10% instead.

 11965574

 11965574

16777215

 10189421

 15715003

 8413524

 16770775

 6768957

 16777203

 5124903

 3546643

 2164224

 0

 11965574

 11965574

 11962228

 11968920

■ 11958882

■ 11972266

■ 11955535

■ 11975613

■ 11952189

■ 11978959

■ 11949099

■ 11982049

■ 11945753

■ 11985395

■ 11942407

■ 11988735

■ 11941120

■ 11992063

■ 11993087

Harmonies

Analogous

The Analogous color harmony consists of three colors that are next to each other on the color wheel.



12226962



11965574



11311231

Triad

The Triadic color harmony groups three colors that are evenly spaced from another and form a triangle on the color wheel.



11965574



8299413



9935286

Complementary

The Complementary color scheme is a pair of colors which are on the opposite of each other on the color wheel.



11965574



8825014

Split Complementary

Split-complementary colors differ from the complementary color scheme. The scheme consists of three colors, the original color and two neighbors of the complement color.



8756919



11965574



7709604

Square

The Square scheme is like the rectangle color scheme, but the four colors are evenly spaced on the color wheel.



11965574



9216392



7905968



11113902

Rectangle

The Rectangle color scheme consists of four colors that form a rectangle on the color wheel.



11965574



10656895



7905968



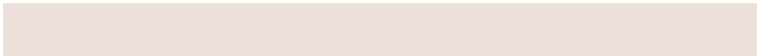
9542583

Sweetspot

The Sweet Spot groups the original color and five complimentary colors.



11965574



15589594



11962024



7892844



16250871



7895160

Same Dimension

The Same Dimension uses a secret algorithm to generate beautiful new colors.



11965574



15579041



11971718



6051155



10235136



1837056

Inverse Universe

The Inverse Universe completely reimagines the original color for something new.



8825014



10606573



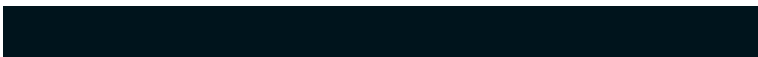
8818870



5462364



28316



5148

Previews

White Background



This preview shows how the Decimal color 11965574 looks on a white background.

Color Contrast Check

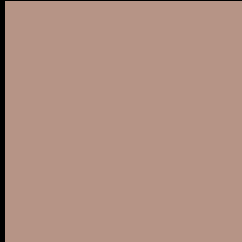
Large Text (above 18pt) WCAG AA × Fail

Any Text WCAG AA × Fail

Large Text (above 18pt) WCAG AAA × Fail

Any Text WCAG AAA × Fail

Black Background



This preview shows how the Decimal color 11965574 looks on a black background.

Color Contrast Check

Large Text (above 18pt) WCAG AA ✓ Pass

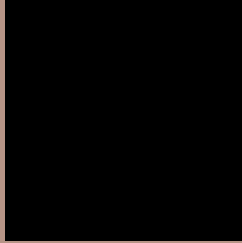
Any Text WCAG AA ✓ Pass

Large Text (above 18pt) WCAG AAA ✓ Pass

Any Text WCAG AAA ✓ Pass

If you want to check with other color combinations, try the [Color Contrast Checker](#).

Decimal 11965574 Background



This preview shows how black text looks on a background with the Decimal color 11965574.



This preview shows how white text looks on a background with the Decimal color 11965574.

Color Blindness Simulation

Color vision deficiency is a very complex topic, and I could not describe the different causes any better than Wikipedia does, so if you want to learn more, you should check out their [article about color blindness](#).

Dichromacy



Original Color
11965574

Protanopia
10656650

Deuteranopia
11703942



Tritanopia
12161436

Trichromacy



Original Color
11965574

Protanomaly
11114633

Deuteranomaly
11769222

Tritanomaly
12096148

Monochromacy



Original Color
11965574

Achromatopsia
10329501

Achromatomaly
10918549

CSS Examples

Text

The CSS property to change the color of the text to Decimal 11965574 is called "color". The color property can be set on classes, ids or directly on the HTML element.

This example shows how text in the color #B69486 looks like.

```
.text, #text, p{  
    color:#B69486  
}
```

If you want to add a text shadow in that color use the text-shadow property, you can generate a text shadow directly with our [CSS Text Shadow Generator](#).

Here you see how black text with a 4 pixel #B69486 colored shadow looks like.

```
.shadow{ text-shadow: 4px 4px 2px #B69486
}
```

Border

The CSS property to change the border of an element to Decimal 11965574 is called "border". The border property can be set on classes, ids or directly on the HTML element.

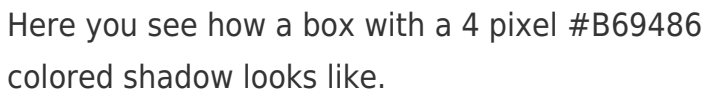
This example shows the color as border, it can be applied via the CSS property "border" or "border-color".

```
.border, #border, table{ border:4px solid
#B69486 }
```

If only the border color should be changed use the property `border-color`.

```
.border{ border-color:#B69486 }
```

If you want to add a box shadow in that color use:



Here you see how a box with a 4 pixel #B69486 colored shadow looks like.

```
.boxshadow{ -moz-box-shadow:4px 4px 4px  
4px #B69486; -webkit-box-shadow:4px 4px  
4px 4px #B69486; box-shadow:4px 4px 4px  
4px #B69486 }
```

Background

The CSS property to change the background color of an element to Decimal 11965574 is called "background". The background property can be set on classes, ids or directly on the HTML element.

```
.background, #background, body{  
background:#B69486 }
```

If only the background color should be changed can be used:

```
.background{ background-color:#B69486 }
```

This example shows the color as background, it is applied via the CSS property "background".

To optimize and compress your CSS code, you can use our [online CSS compressor and optimizer](#) based on csstidy. If you want to create a linear or radial gradient as background or border, check our [CSS Gradient Generator](#).

Hey! You found this booklet interesting? Support Converting Colors with the new Membership Option!

The pro membership hides all ads, plus gives you double the colors in the color bucket, and more awesome pro features!

[Learn more, Memberships starting at \\$2.50/m!](#)

**Follow me
on Twitter!**

@ConvertingColor