

Converting Colors

Decimal(11965805)

Have a look what the booklet for
Decimal(11965805) contains.

Decimal(11965805)	3
<i>Conversions</i>	4
<i>Details</i>	6
<i>Harmonies</i>	11
<i>Previews</i>	23
<i>Color Blindness Simulation</i>	26
<i>CSS Examples</i>	29

Color

Decimal(11965805)

Conversions

Conversions Part 1

Format	Color
Hex	B6956D
RGB	182, 149, 109
RGB Percent	71%, 58%, 43%
CMY	0.2863, 0.4157, 0.5725
CMYK	0.00, 0.18, 0.40, 0.29
HSL	33°, 33%, 57%
HSV	33°, 40%, 71%
XYZ	32.7992, 32.5441, 19.0209
YIQ	154.3070, 32.5080, -5.4440

Conversions

Conversions Part 2

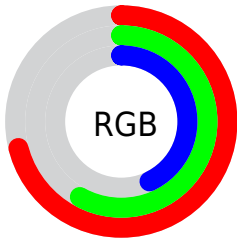
Format	Color
R _Y B	169, 182, 109
Decimal	11965805
CIE Lab	63.79, 6.78, 25.77
CIE LCh	64, 26.644, 75.248
Yxy	32.5441, 0.3888, 0.3858
Android (android.graphics.Color)	4290155885 (0xFFB6956D)
YUV	154.3070, -22.3364, 24.2868
Hunter-Lab	57.0474, 2.7948, 20.1645

Details

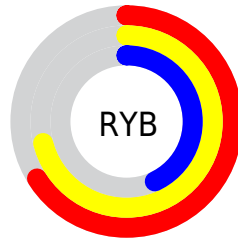
The Decimal color **11965805** is a dark color, and the websafe version is hex **CC9966**. A complement of this color would be **7179958**, and the grayscale version is **10197915**.

A 20% lighter version of the original color is **15715233**, and **8413757** is the 20% darker color. If you saturate the color by 10%, you get **11963739**, and if you desaturate by 10%, it is **11967871**.

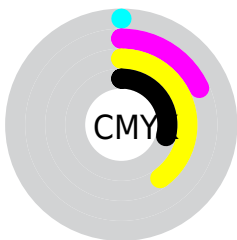
Distribution



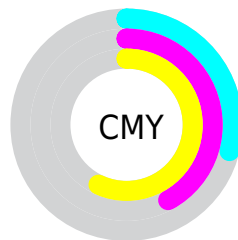
- Red (71%)
- Green (58%)
- Blue (43%)



- Red (66%)
- Yellow (71%)
- Blue (43%)



- Cyan (0%)
- Magenta (18%)
- Yellow (40%)
- Black (29%)




- Cyan (29%)
- Magenta (42%)
- Yellow (57%)

Brightness & Saturation Gradients

These gradients show how the Decimal color 11965805 changes by changing the brightness by 10 percent. The first figure shows a shift by +10% for each color and the second figure -10%.

Similar to the brightness gradients but the following saturation gradients show a change of the Decimal color 11965805 by changing the saturation by 10% instead.

 11965805

 11965805

16777215

 10124116

 15715233

 8413757

 16771004

 6638374

 16777176

 4994065

 16777204

 3415808

 1837056

 0

 11965805

 11965805

 11963739

 11967871

■ 11961673

■ 11969937

■ 11959350

■ 11972260

■ 11957284

■ 11974326

■ 11955218

■ 11976392

■ 11953152

■ 11978458

■ 11980780

■ 11982847

■ 11984895

Harmonies

Analogous

The Analogous color harmony consists of three colors that are next to each other on the color wheel.



13012602



11965805



10460524

Triad

The Triadic color harmony groups three colors that are evenly spaced from another and form a triangle on the color wheel.



11965805



5548198



11374780

Complementary

The Complementary color scheme is a pair of colors which are on the opposite of each other on the color wheel.



11965805



7179958

Split Complementary

Split-complementary colors differ from the complementary color scheme. The scheme consists of three colors, the original color and two neighbors of the complement color.



9345480



11965805



5482171

Square

The Square scheme is like the rectangle color scheme, but the four colors are evenly spaced on the color wheel.



11965805



6924174



7053512



12749479

Rectangle

The Rectangle color scheme consists of four colors that form a rectangle on the color wheel.



11965805



9281907



7053512



10720193

Sweetspot

The Sweet Spot groups the original color and five complimentary colors.



11965805



15589585



11955599



7893095



16250871



7895160

Same Dimension

The Same Dimension uses a secret algorithm to generate beautiful new colors.



11965805



15579771



11843181



6051923



10245376



1838848

Inverse Universe

The Inverse Universe completely reimagines the original color for something new.



7179958



8105965



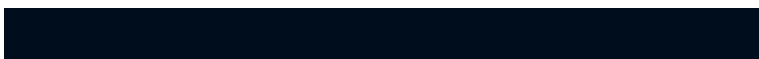
7302582



5461852



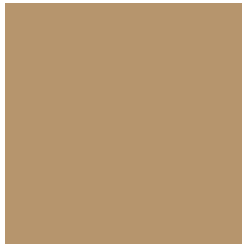
18076



3356

Previews

White Background



This preview shows how the Decimal color 11965805 looks on a white background.

Color Contrast Check

Large Text (above 18pt) WCAG AA × Fail

Any Text WCAG AA × Fail

Large Text (above 18pt) WCAG AAA × Fail

Any Text WCAG AAA × Fail

Black Background



This preview shows how the Decimal color 11965805 looks on a black background.

Color Contrast Check

Large Text (above 18pt) WCAG AA ✓ Pass

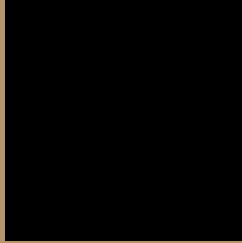
Any Text WCAG AA ✓ Pass

Large Text (above 18pt) WCAG AAA ✓ Pass

Any Text WCAG AAA ✓ Pass

If you want to check with other color combinations, try the [Color Contrast Checker](#).

Decimal 11965805 Background



This preview shows how black text looks on a background with the Decimal color 11965805.



This preview shows how white text looks on a background with the Decimal color 11965805.

Color Blindness Simulation

Color vision deficiency is a very complex topic, and I could not describe the different causes any better than Wikipedia does, so if you want to learn more, you should check out their [article about color blindness](#).


Dichromacy



Original Color
11965805

Protanopia
10984303

Deuteranopia
12096621



Tritanopia
12291994

Trichromacy



Original Color
11965805

Protanomaly
11311470

Deuteranomaly
12031085

Tritanomaly
12161418

Monochromacy



Original Color
11965805

Achromatopsia
10132122

Achromatomaly
10786954

CSS Examples

Text

The CSS property to change the color of the text to Decimal 11965805 is called "color". The color property can be set on classes, ids or directly on the HTML element.

This example shows how text in the color #B6956D looks like.

```
.text, #text, p{  
    color:#B6956D  
}
```

If you want to add a text shadow in that color use the text-shadow property, you can generate a text shadow directly with our [CSS Text Shadow Generator](#).

Here you see how black text with a 4 pixel #B6956D colored shadow looks like.

```
.shadow{ text-shadow: 4px 4px 2px #B6956D
}
```

Border

The CSS property to change the border of an element to Decimal 11965805 is called "border". The border property can be set on classes, ids or directly on the HTML element.

This example shows the color as border, it can be applied via the CSS property "border" or "border-color".

```
.border, #border, table{ border:4px solid
#B6956D }
```

If only the border color should be changed use the property `border-color`.

```
.border{ border-color:#B6956D }
```

If you want to add a box shadow in that color use:

Here you see how a box with a 4 pixel #B6956D colored shadow looks like.

```
.boxshadow{ -moz-box-shadow:4px 4px 4px  
4px #B6956D; -webkit-box-shadow:4px 4px  
4px 4px #B6956D; box-shadow:4px 4px 4px  
4px #B6956D }
```

Background

The CSS property to change the background color of an element to Decimal 11965805 is called "background". The background property can be set on classes, ids or directly on the HTML element.

```
.background, #background, body{  
background:#B6956D }
```

If only the background color should be changed can be used:

```
.background{ background-color:#B6956D }
```

This example shows the color as background, it is applied via the CSS property "background".

To optimize and compress your CSS code, you can use our [online CSS compressor and optimizer](#) based on csstidy. If you want to create a linear or radial gradient as background or border, check our [CSS Gradient Generator](#).

Hey! You found this booklet interesting? Support Converting Colors with the new Membership Option!

The pro membership hides all ads, plus gives you double the colors in the color bucket, and more awesome pro features!

[Learn more, Memberships starting at \\$2.50/m!](#)

**Follow me
on Twitter!**

@ConvertingColor