

Converting Colors

Decimal(11965852)

Have a look what the booklet for
Decimal(11965852) contains.

Decimal(11965852)	3
<i>Conversions</i>	4
<i>Details</i>	6
<i>Harmonies</i>	11
<i>Previews</i>	23
<i>Color Blindness Simulation</i>	26
<i>CSS Examples</i>	29

Color

Decimal(11965852)

Conversions

Conversions Part 1

Format	Color
Hex	B6959C
RGB	182, 149, 156
RGB Percent	71%, 58%, 61%
CMY	0.2863, 0.4157, 0.3882
CMYK	0.00, 0.18, 0.14, 0.29
HSL	347°, 18%, 65%
HSV	347°, 18%, 71%
XYZ	36.0396, 33.8403, 36.0848
YIQ	159.6650, 17.4210, 9.1730

Conversions

Conversions Part 2

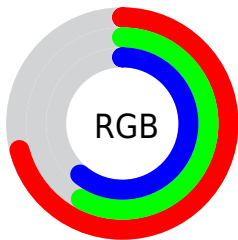
Format	Color
R_{YB}	182, 149, 156
Decimal	11965852
CIE _{Lab}	64.84, 13.47, 0.97
CIE _{LCh}	65, 13.501, 4.106
Yxy	33.8403, 0.3401, 0.3194
Android (android.graphics.Color)	4290155932 (0xFFB6959C)
YUV	159.6650, -1.8068, 19.5878
Hunter-Lab	58.1724, 8.7846, 3.9426

Details

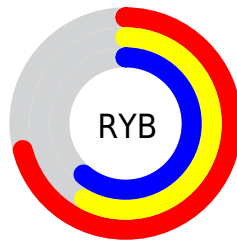
The Decimal color **11965852** is a light color, and the websafe version is hex **CC9999**. A complement of this color would be **9811631**, and the grayscale version is **10526880**.

A 20% lighter version of the original color is **15649746**, and **8479337** is the 20% darker color. If you saturate the color by 10%, you get **11961230**, and if you desaturate by 10%, it is **11970474**.

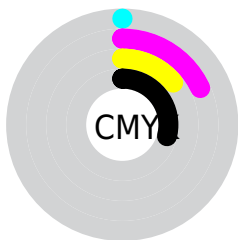
Distribution



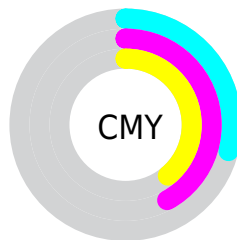
- Red (71%)
- Green (58%)
- Blue (61%)



- Red (71%)
- Yellow (58%)
- Blue (61%)



- Cyan (0%)
- Magenta (18%)
- Yellow (14%)
- Black (29%)



- Cyan (29%)
- Magenta (42%)
- Yellow (39%)

Brightness & Saturation Gradients

These gradients show how the Decimal color 11965852 changes by changing the brightness by 10 percent. The first figure shows a shift by +10% for each color and the second figure -10%.

Similar to the brightness gradients but the following saturation gradients show a change of the Decimal color 11965852 by changing the saturation by 10% instead.



11965852



11965852

16777215



10189698



15649746



8479337



16771055



6769233



5190458



3612196



2230031



0



11965852



11965852



11961230



11970474

■ 11956607

■ 11975097

■ 11951729

■ 11979975

■ 11947107

■ 11984597

■ 11942484

■ 11989220

■ 11937862

■ 11993074

■ 11933240

■ 11993087

■ 11928361

■ 11927591

Harmonies

Analogous

The Analogous color harmony consists of three colors that are next to each other on the color wheel.



11507368



11965852



11966096

Triad

The Triadic color harmony groups three colors that are evenly spaced from another and form a triangle on the color wheel.



11965852



10002825



8757683

Complementary

The Complementary color scheme is a pair of colors which are on the opposite of each other on the color wheel.



11965852



9811631

Split Complementary

Split-complementary colors differ from the complementary color scheme. The scheme consists of three colors, the original color and two neighbors of the complement color.



8299690



11965852



9085842

Square

The Square scheme is like the rectangle color scheme, but the four colors are evenly spaced on the color wheel.



11965852



10853765



8496287



9608885

Rectangle

The Rectangle color scheme consists of four colors that form a rectangle on the color wheel.



11965852



11769994



8496287



8561328

Sweetspot

The Sweet Spot groups the original color and five complimentary colors.



11965852



15589860



11507126



7893362



16250871



7895160

Same Dimension

The Same Dimension uses a secret algorithm to generate beautiful new colors.



11965852



15579588



11968149



6050645



10223649



1835014

Inverse Universe

The Inverse Universe completely reimagines the original color for something new.



11965852



15579588



9809334



6050645



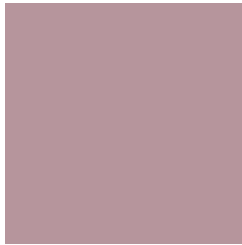
10223649



1835014

Previews

White Background



This preview shows how the Decimal color 11965852 looks on a white background.

Color Contrast Check

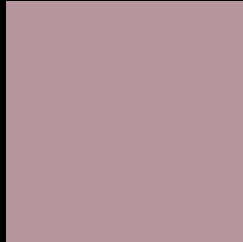
Large Text (above 18pt) WCAG AA × Fail

Any Text WCAG AA × Fail

Large Text (above 18pt) WCAG AAA × Fail

Any Text WCAG AAA × Fail

Black Background



This preview shows how the Decimal color 11965852 looks on a black background.

Color Contrast Check

Large Text (above 18pt) WCAG AA ✓ Pass

Any Text WCAG AA ✓ Pass

Large Text (above 18pt) WCAG AAA ✓ Pass

Any Text WCAG AAA ✓ Pass

If you want to check with other color combinations, try the [Color Contrast Checker](#).

Decimal 11965852 Background



This preview shows how black text looks on a background with the Decimal color 11965852.



This preview shows how white text looks on a background with the Decimal color 11965852.

Color Blindness Simulation

Color vision deficiency is a very complex topic, and I could not describe the different causes any better than Wikipedia does, so if you want to learn more, you should check out their [article about color blindness](#).


Dichromacy



Original Color
11965852

Protanopia
10460576

Deuteranopia
11376795



Tritanopia
11965600

Trichromacy



Original Color
11965852

Protanomaly
10984095

Deuteranomaly
11573147

Tritanomaly
11965599

Monochromacy



Original Color
11965852

Achromatopsia
10526880

Achromatomaly
11050143

CSS Examples

Text

The CSS property to change the color of the text to Decimal 11965852 is called "color". The color property can be set on classes, ids or directly on the HTML element.

This example shows how text in the color #B6959C looks like.

```
.text, #text, p{  
    color:#B6959C  
}
```

If you want to add a text shadow in that color use the text-shadow property, you can generate a text shadow directly with our [CSS Text Shadow Generator](#).

Here you see how black text with a 4 pixel #B6959C colored shadow looks like.

```
.shadow{ text-shadow: 4px 4px 2px #B6959C
}
```

Border

The CSS property to change the border of an element to Decimal 11965852 is called "border". The border property can be set on classes, ids or directly on the HTML element.

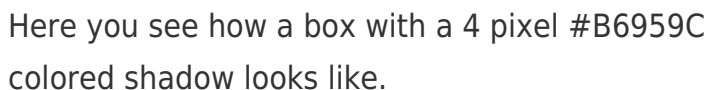
This example shows the color as border, it can be applied via the CSS property "border" or "border-color".

```
.border, #border, table{ border:4px solid
#B6959C }
```

If only the border color should be changed use the property `border-color`.

```
.border{ border-color:#B6959C }
```

If you want to add a box shadow in that color use:



Here you see how a box with a 4 pixel #B6959C colored shadow looks like.

```
.boxshadow{ -moz-box-shadow:4px 4px 4px  
4px #B6959C; -webkit-box-shadow:4px 4px  
4px 4px #B6959C; box-shadow:4px 4px 4px  
4px #B6959C }
```

Background

The CSS property to change the background color of an element to Decimal 11965852 is called "background". The background property can be set on classes, ids or directly on the HTML element.

```
.background, #background, body{  
background:#B6959C }
```

If only the background color should be changed can be used:

```
.background{ background-color:#B6959C }
```

This example shows the color as background, it is applied via the CSS property "background".

To optimize and compress your CSS code, you can use our [online CSS compressor and optimizer](#) based on csstidy. If you want to create a linear or radial gradient as background or border, check our [CSS Gradient Generator](#).

Hey! You found this booklet interesting? Support Converting Colors with the new Membership Option!

The pro membership hides all ads, plus gives you double the colors in the color bucket, and more awesome pro features!

[Learn more, Memberships starting at \\$2.50/m!](#)

**Follow me
on Twitter!**

@ConvertingColor