

Converting Colors

Decimal(11966098)

Have a look what the booklet for
Decimal(11966098) contains.

Decimal(11966098)	3
<i>Conversions</i>	4
<i>Details</i>	6
<i>Harmonies</i>	11
<i>Previews</i>	23
<i>Color Blindness Simulation</i>	26
<i>CSS Examples</i>	29

Color

Decimal(11966098)

Conversions

Conversions Part 1

Format	Color
Hex	B69692
RGB	182, 150, 146
RGB Percent	71%, 59%, 57%
CMY	0.2863, 0.4118, 0.4275
CMYK	0.00, 0.18, 0.20, 0.29
HSL	7°, 20%, 64%
HSV	7°, 20%, 71%
XYZ	35.3861, 33.8331, 31.8595
YIQ	159.1120, 20.3560, 5.5400

Conversions

Conversions Part 2

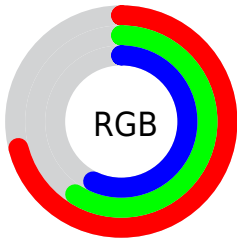
Format	Color
RYB	182, 151, 146
Decimal	11966098
CIELab	64.83, 11.29, 6.58
CIElCh	65, 13.070, 30.251
Yxy	33.8331, 0.3501, 0.3347
Android (android.graphics.Color)	4290156178 (0xFFB69692)
YUV	159.1120, -6.4642, 20.0728
Hunter-Lab	58.1662, 6.8015, 8.2413

Details

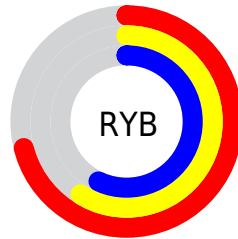
The Decimal color **11966098** is a light color, and the websafe version is hex **CC9999**. A complement of this color would be **9614006**, and the grayscale version is **10461087**.

A 20% lighter version of the original color is **15649992**, and **8479584** is the 20% darker color. If you saturate the color by 10%, you get **11961984**, and if you desaturate by 10%, it is **11970212**.

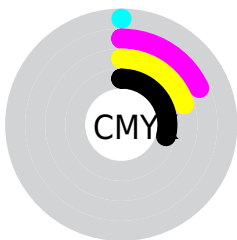
Distribution



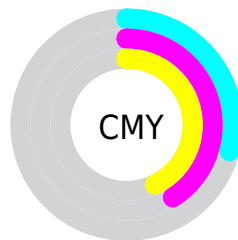
- Red (71%)
- Green (59%)
- Blue (57%)



- Red (71%)
- Yellow (59%)
- Blue (57%)



- Cyan (0%)
- Magenta (18%)
- Yellow (20%)
- Black (29%)



- Cyan (29%)
- Magenta (41%)
- Yellow (43%)

Brightness & Saturation Gradients

These gradients show how the Decimal color 11966098 changes by changing the brightness by 10 percent. The first figure shows a shift by +10% for each color and the second figure -10%.

Similar to the brightness gradients but the following saturation gradients show a change of the Decimal color 11966098 by changing the saturation by 10% instead.

 11966098

 11966098

16777215

 10189944

 15649992

 8479584

 16771300

 6769480

 5190705

 3612445

 2295810

 0

 11966098

 11966098

 11961984

 11970212

 11957870

 11974326

 11953499

 11978697

 11949385

 11982811

 11945271

 11986925


 11941157

 11991039

 11937043

 11993087

 11932928

 11932672

Harmonies

Analogous

The Analogous color harmony consists of three colors that are next to each other on the color wheel.



11900318



11966098



11639177

Triad

The Triadic color harmony groups three colors that are evenly spaced from another and form a triangle on the color wheel.



11966098



9216913



9543348

Complementary

The Complementary color scheme is a pair of colors which are on the opposite of each other on the color wheel.



11966098



9614006

Split Complementary

Split-complementary colors differ from the complementary color scheme. The scheme consists of three colors, the original color and two neighbors of the complement color.



8692401



11966098



8627357

Square

The Square scheme is like the rectangle color scheme, but the four colors are evenly spaced on the color wheel.



11966098



10133641



8365225



10525361

Rectangle

The Rectangle color scheme consists of four colors that form a rectangle on the color wheel.



11966098



11246470



8365225



9215924

Sweetspot

The Sweet Spot groups the original color and five complimentary colors.



11966098



15589855



11965106



7893103



16250871



7895160

Same Dimension

The Same Dimension uses a secret algorithm to generate beautiful new colors.



11966098



15580084



11970706



6050899



10227968



1835776

Inverse Universe

The Inverse Universe completely reimagines the original color for something new.



9614006



11855853



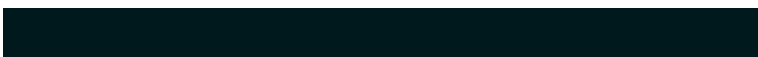
9609398



5462876



35484



6428

Previews

White Background



This preview shows how the Decimal color 11966098 looks on a white background.

Color Contrast Check

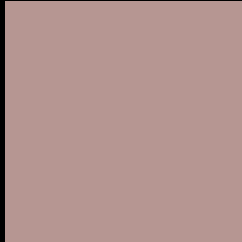
Large Text (above 18pt) WCAG AA × Fail

Any Text WCAG AA × Fail

Large Text (above 18pt) WCAG AAA × Fail

Any Text WCAG AAA × Fail

Black Background



This preview shows how the Decimal color 11966098 looks on a black background.

Color Contrast Check

Large Text (above 18pt) WCAG AA ✓ Pass

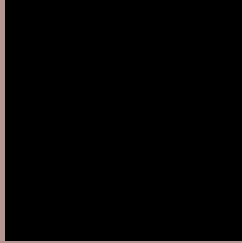
Any Text WCAG AA ✓ Pass

Large Text (above 18pt) WCAG AAA ✓ Pass

Any Text WCAG AAA ✓ Pass

If you want to check with other color combinations, try the [Color Contrast Checker](#).

Decimal 11966098 Background



This preview shows how black text looks on a background with the Decimal color 11966098.



This preview shows how white text looks on a background with the Decimal color 11966098.

Color Blindness Simulation

Color vision deficiency is a very complex topic, and I could not describe the different causes any better than Wikipedia does, so if you want to learn more, you should check out their [article about color blindness](#).

Dichromacy





Tritanopia
12096671

Trichromacy



Original Color
11966098

Protanomaly
11115157

Deuteranomaly
11769746

Tritanomaly
12031386

Monochromacy



Original Color
11966098

Achromatopsia
10461087

Achromatomaly
10984602

CSS Examples

Text

The CSS property to change the color of the text to Decimal 11966098 is called "color". The color property can be set on classes, ids or directly on the HTML element.

This example shows how text in the color #B69692 looks like.

```
.text, #text, p{  
    color:#B69692  
}
```

If you want to add a text shadow in that color use the text-shadow property, you can generate a text shadow directly with our [CSS Text Shadow Generator](#).

Here you see how black text with a 4 pixel #B69692 colored shadow looks like.

```
.shadow{ text-shadow: 4px 4px 2px #B69692
}
```

Border

The CSS property to change the border of an element to Decimal 11966098 is called "border". The border property can be set on classes, ids or directly on the HTML element.

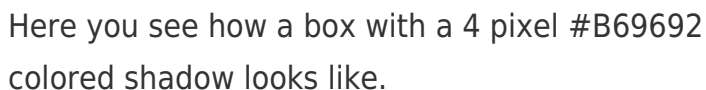
This example shows the color as border, it can be applied via the CSS property "border" or "border-color".

```
.border, #border, table{ border:4px solid
#B69692 }
```

If only the border color should be changed use the property `border-color`.

```
.border{ border-color:#B69692 }
```

If you want to add a box shadow in that color use:



Here you see how a box with a 4 pixel #B69692 colored shadow looks like.

```
.boxshadow{ -moz-box-shadow:4px 4px 4px  
4px #B69692; -webkit-box-shadow:4px 4px  
4px 4px #B69692; box-shadow:4px 4px 4px  
4px #B69692 }
```

Background

The CSS property to change the background color of an element to Decimal 11966098 is called "background". The background property can be set on classes, ids or directly on the HTML element.

```
.background, #background, body{  
background:#B69692 }
```

If only the background color should be changed can be used:

```
.background{ background-color:#B69692 }
```

This example shows the color as background, it is applied via the CSS property "background".

To optimize and compress your CSS code, you can use our [online CSS compressor and optimizer](#) based on csstidy. If you want to create a linear or radial gradient as background or border, check our [CSS Gradient Generator](#).

Hey! You found this booklet interesting? Support Converting Colors with the new Membership Option!

The pro membership hides all ads, plus gives you double the colors in the color bucket, and more awesome pro features!

[Learn more, Memberships starting at \\$2.50/m!](#)

**Follow me
on Twitter!**

@ConvertingColor