

# Converting Colors

Decimal(11966340)

Have a look what the booklet for  
Decimal(11966340) contains.

<b>Decimal(11966340)</b> .....	3
<i><b>Conversions</b></i> .....	4
<i><b>Details</b></i> .....	6
<i><b>Harmonies</b></i> .....	11
<i><b>Previews</b></i> .....	23
<i><b>Color Blindness Simulation</b></i> .....	26
<i><b>CSS Examples</b></i> .....	29

# **Color**

**Decimal(11966340)**

# Conversions

## Conversions Part 1

Format	Color
Hex	B69784
RGB	182, 151, 132
RGB Percent	71%, 59%, 52%
CMY	0.2863, 0.4078, 0.4824
CMYK	0.00, 0.17, 0.27, 0.29
HSL	23°, 26%, 62%
HSV	23°, 27%, 71%
XYZ	34.5229, 33.7442, 26.5235
YIQ	158.1030, 24.5750, 0.6630

# Conversions

## Conversions Part 2

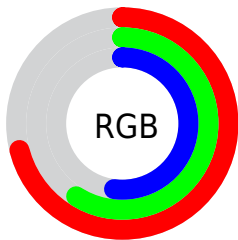
<b>Format</b>	<b>Color</b>
<b>RYB</b>	182, 163, 132
Decimal	11966340
CIELab	64.76, 8.65, 14.33
CIElCh	65, 16.739, 58.897
Yxy	33.7442, 0.3642, 0.3560
Android (android.graphics.Color)	4290156420 (0xFFB69784)
YUV	158.1030, -12.8688, 20.9577
Hunter-Lab	58.0898, 4.4257, 13.5913

# Details

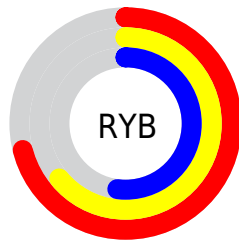
The Decimal color **11966340** is a light color, and the websafe version is hex **CC9999**. A complement of this color would be **8692662**, and the grayscale version is **10395294**.

A 20% lighter version of the original color is **15715769**, and **8414291** is the 20% darker color. If you saturate the color by 10%, you get **11963506**, and if you desaturate by 10%, it is **11969174**.

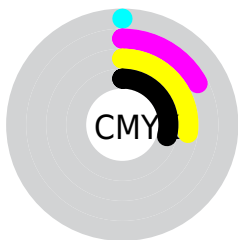
# Distribution



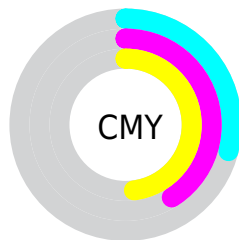
- Red (71%)
- Green (59%)
- Blue (52%)



- Red (71%)
- Yellow (64%)
- Blue (52%)



- Cyan (0%)
- Magenta (17%)
- Yellow (27%)
- Black (29%)



- Cyan (29%)
- Magenta (41%)
- Yellow (48%)

# Brightness & Saturation Gradients

These gradients show how the Decimal color 11966340 changes by changing the brightness by 10 percent. The first figure shows a shift by +10% for each color and the second figure -10%.

Similar to the brightness gradients but the following saturation gradients show a change of the Decimal color 11966340 by changing the saturation by 10% instead.



 11966340

 11966340

16777215

 10190187

 15715769

 8414291

 16771541

 6769723

 16777201

 5125414

 3547153

 2165248

 0

 11966340

 11966340

 11963506

 11969174

 11960416

 11972264

 11957581

 11975099

 11954747

 11977933

 11951913

 11980767

 11948823

 11983857

 11945989

 11986687

 11945216

 11989503

 11992575

# Harmonies

## Analogous

The Analogous color harmony consists of three colors that are next to each other on the color wheel.



12358799



11966340



11115647

# Triad

The Triadic color harmony groups three colors that are evenly spaced from another and form a triangle on the color wheel.



11966340



8038044



10459575

# Complementary

The Complementary color scheme is a pair of colors which are on the opposite of each other on the color wheel.



11966340



8692662

# Split Complementary

Split-complementary colors differ from the complementary color scheme. The scheme consists of three colors, the original color and two neighbors of the complement color.



9215931



11966340



7710123

# Square

The Square scheme is like the rectangle color scheme, but the four colors are evenly spaced on the color wheel.



11966340



8955021



8102838



11572653

# Rectangle

The Rectangle color scheme consists of four colors that form a rectangle on the color wheel.



11966340



10461057



8102838



10066873



# Sweetspot

The Sweet Spot groups the original color and five complimentary colors.



11966340



15589850



11961508



7893100



16250871



7895160



# Same Dimension

The Same Dimension uses a secret algorithm to generate beautiful new colors.



11966340



15580575



11972484



6051411



10238720



1837824



# Inverse Universe

The Inverse Universe completely reimagines the original color for something new.



8692662



10473453



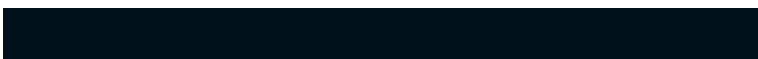
8686518



5462108



24732



4380



# Previews

## White Background



This preview shows how the Decimal color 11966340 looks on a white background.

## Color Contrast Check

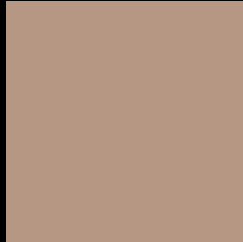
Large Text (above 18pt) WCAG AA × Fail

Any Text WCAG AA × Fail

Large Text (above 18pt) WCAG AAA × Fail

Any Text WCAG AAA × Fail

# Black Background



This preview shows how the Decimal color 11966340 looks on a black background.

## Color Contrast Check

Large Text (above 18pt) WCAG AA ✓ Pass

Any Text WCAG AA ✓ Pass

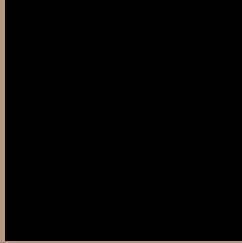
Large Text (above 18pt) WCAG AAA ✓ Pass

Any Text WCAG AAA ✓ Pass

If you want to check with other color combinations, try the [Color Contrast Checker](#).



## Decimal 11966340 Background



This preview shows how black text looks on a background with the Decimal color 11966340.




This preview shows how white text looks on a background with the Decimal color 11966340.

# Color Blindness Simulation

Color vision deficiency is a very complex topic, and I could not describe the different causes any better than Wikipedia does, so if you want to learn more, you should check out their [article about color blindness](#).

## Dichromacy





**Tritanopia**  
12161951

# Trichromacy



**Original Color**  
11966340

**Protanomaly**  
11246470

**Deuteranomaly**  
11900804

**Tritanomaly**  
12096661

# Monochromacy



**Original Color**  
11966340

**Achromatopsia**  
10395294

**Achromatomaly**  
10984341

# CSS Examples

## Text

The CSS property to change the color of the text to Decimal 11966340 is called "color". The color property can be set on classes, ids or directly on the HTML element.

This example shows how text in the color #B69784 looks like.

```
.text, #text, p{  
  color:#B69784  
}
```

If you want to add a text shadow in that color use the text-shadow property, you can generate a text shadow directly with our [CSS Text Shadow Generator](#).

Here you see how black text with a 4 pixel #B69784 colored shadow looks like.

```
.shadow{ text-shadow: 4px 4px 2px #B69784
}
```

## Border

The CSS property to change the border of an element to Decimal 11966340 is called "border". The border property can be set on classes, ids or directly on the HTML element.

This example shows the color as border, it can be applied via the CSS property "border" or "border-color".

```
.border, #border, table{ border:4px solid
#B69784 }
```

If only the border color should be changed use the property `border-color`.

```
.border{ border-color:#B69784 }
```

If you want to add a box shadow in that color use:

Here you see how a box with a 4 pixel #B69784 colored shadow looks like.

```
.boxshadow{ -moz-box-shadow:4px 4px 4px  
4px #B69784; -webkit-box-shadow:4px 4px  
4px 4px #B69784; box-shadow:4px 4px 4px  
4px #B69784 }
```

# Background

The CSS property to change the background color of an element to Decimal 11966340 is called "background". The background property can be set on classes, ids or directly on the HTML element.

```
.background, #background, body{  
background:#B69784 }
```

If only the background color should be changed can be used:

```
.background{ background-color:#B69784 }
```

This example shows the color as background, it is applied via the CSS property "background".

To optimize and compress your CSS code, you can use our [online CSS compressor and optimizer](#) based on csstidy. If you want to create a linear or radial gradient as background or border, check our [CSS Gradient Generator](#).



Hey! You found this booklet interesting? Support Converting Colors with the new Membership Option!

The pro membership hides all ads, plus gives you double the colors in the color bucket, and more awesome pro features!

**[Learn more, Memberships starting at \\$2.50/m!](#)**

**Follow me  
on Twitter!**

@ConvertingColor