

# Converting Colors

Decimal(11967128)

Have a look what the booklet for  
Decimal(11967128) contains.

<b>Decimal(11967128)</b> .....	3
<i><b>Conversions</b></i> .....	4
<i><b>Details</b></i> .....	6
<i><b>Harmonies</b></i> .....	11
<i><b>Previews</b></i> .....	23
<i><b>Color Blindness Simulation</b></i> .....	26
<i><b>CSS Examples</b></i> .....	29

# **Color**

**Decimal(11967128)**

# Conversions

## Conversions Part 1

<b>Format</b>	<b>Color</b>
Hex	B69A98
RGB	182, 154, 152
RGB Percent	71%, 60%, 60%
CMY	0.2863, 0.3961, 0.4039
CMYK	0.00, 0.15, 0.16, 0.29
HSL	4°, 17%, 65%
HSV	4°, 16%, 71%
XYZ	36.5145, 35.3233, 34.5993
YIQ	162.1440, 17.3300, 5.3140

# Conversions

## Conversions Part 2

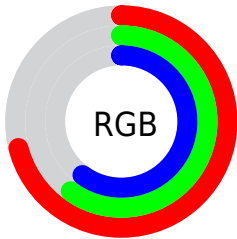
Format	Color
<a href="#">RYB</a>	<a href="#">182, 154, 152</a>
Decimal	<a href="#">11967128</a>
CIELab	<a href="#">66.00, 10.03, 4.90</a>
CIElCh	<a href="#">66, 11.165, 26.030</a>
Yxy	<a href="#">35.3233, 0.3431, 0.3319</a>
Android (android.graphics.Color)	<a href="#">4290157208 (0xFFB69A98)</a>
YUV	<a href="#">162.1440, -5.0010, 17.4137</a>
Hunter-Lab	<a href="#">59.4334, 5.6578, 7.0875</a>

# Details

The Decimal color **11967128** is a light color, and the websafe version is hex **CC9999**. A complement of this color would be **10007734**, and the grayscale version is **10658466**.

A 20% lighter version of the original color is **15651022**, and **8480613** is the 20% darker color. If you saturate the color by 10%, you get **11962758**, and if you desaturate by 10%, it is **11971498**.

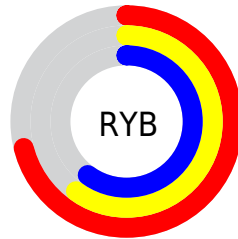
# Distribution



Red (71%)

Green (60%)

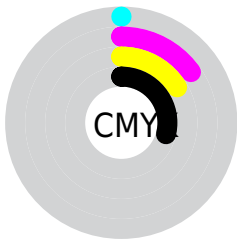
Blue (60%)



Red (71%)

Yellow (60%)

Blue (60%)

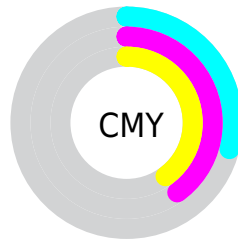


Cyan (0%)

Magenta (15%)

Yellow (16%)

Black (29%)



Cyan (29%)

Magenta (40%)

Yellow (40%)

# Brightness & Saturation Gradients

These gradients show how the Decimal color 11967128 changes by changing the brightness by 10 percent. The first figure shows a shift by +10% for each color and the second figure -10%.

Similar to the brightness gradients but the following saturation gradients show a change of the Decimal color 11967128 by changing the saturation by 10% instead.



 11967128

 11967128


16777215

 10190974


 15651022

 8480613

 16772586

 6770509

 5191734

 3678753

 2231562

 0

 11967128

 11967128

 11962758

 11971498

 11958388

 11975868

 11954017

 11980239

 11949647

 11984609

 11945277

 11988979

 11940907

 11993087

 11936537

 11932166

 11930624

# Harmonies

## Analogous

The Analogous color harmony consists of three colors that are next to each other on the color wheel.



11836066



11967128



11705488

# Triad

The Triadic color harmony groups three colors that are evenly spaced from another and form a triangle on the color wheel.



11967128



9741717



9740980

# Complementary

The Complementary color scheme is a pair of colors which are on the opposite of each other on the color wheel.



11967128



10007734

# Split Complementary

Split-complementary colors differ from the complementary color scheme. The scheme consists of three colors, the original color and two neighbors of the complement color.



9151665



11967128



9152159

# Square

The Square scheme is like the rectangle color scheme, but the four colors are evenly spaced on the color wheel.



11967128



10461838



8890025



10591922

# Rectangle

The Rectangle color scheme consists of four colors that form a rectangle on the color wheel.



11967128



11378317



8890025



9479091



# Sweetspot

The Sweet Spot groups the original color and five complimentary colors.



11967128



15590113



11966644



7893361



16250871



7895160



# Same Dimension

The Same Dimension uses a secret algorithm to generate beautiful new colors.



11967128



15581630



11970968



6050643



10226176



1835520



# Inverse Universe

The Inverse Universe completely reimagines the original color for something new.



10007734



12511981



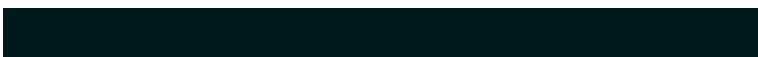
10004150



5462876



37276

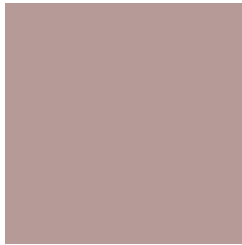


6684



# Previews

## White Background



This preview shows how the Decimal color 11967128 looks on a white background.

## Color Contrast Check

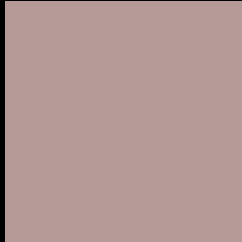
Large Text (above 18pt) WCAG AA × Fail

Any Text WCAG AA × Fail

Large Text (above 18pt) WCAG AAA × Fail

Any Text WCAG AAA × Fail

# Black Background



This preview shows how the Decimal color 11967128 looks on a black background.

## Color Contrast Check

Large Text (above 18pt) WCAG AA ✓ Pass

Any Text WCAG AA ✓ Pass

Large Text (above 18pt) WCAG AAA ✓ Pass

Any Text WCAG AAA ✓ Pass

If you want to check with other color combinations, try the [Color Contrast Checker](#).



## Decimal 11967128 Background



This preview shows how black text looks on a background with the Decimal color 11967128.



This preview shows how white text looks on a background with the Decimal color 11967128.

# Color Blindness Simulation

Color vision deficiency is a very complex topic, and I could not describe the different causes any better than Wikipedia does, so if you want to learn more, you should check out their [article about color blindness](#).

## Dichromacy



**Original Color**  
11967128

**Protanopia**  
10854555

**Deuteranopia**  
11770776



**Tritanopia**  
12097700

# Trichromacy



**Original Color**  
11967128

**Protanomaly**  
11247258

**Deuteranomaly**  
11836312

**Tritanomaly**  
12032416

# Monochromacy



**Original Color**  
11967128

**Achromatopsia**  
10658466

**Achromatomaly**  
11116446

# CSS Examples

## Text

The CSS property to change the color of the text to Decimal 11967128 is called "color". The color property can be set on classes, ids or directly on the HTML element.

This example shows how text in the color #B69A98 looks like.

```
.text, #text, p{  
    color:#B69A98  
}
```

If you want to add a text shadow in that color use the text-shadow property, you can generate a text shadow directly with our [CSS Text Shadow Generator](#).

Here you see how black text with a 4 pixel #B69A98 colored shadow looks like.

```
.shadow{ text-shadow: 4px 4px 2px #B69A98
}
```

## Border

The CSS property to change the border of an element to Decimal 11967128 is called "border". The border property can be set on classes, ids or directly on the HTML element.

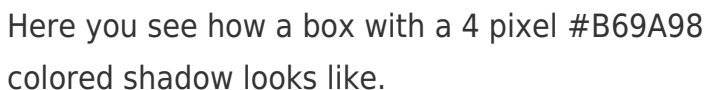
This example shows the color as border, it can be applied via the CSS property "border" or "border-color".

```
.border, #border, table{ border:4px solid
#B69A98 }
```

If only the border color should be changed use the property `border-color`.

```
.border{ border-color:#B69A98 }
```

If you want to add a box shadow in that color use:



Here you see how a box with a 4 pixel #B69A98 colored shadow looks like.

```
.boxshadow{ -moz-box-shadow:4px 4px 4px  
4px #B69A98; -webkit-box-shadow:4px 4px  
4px 4px #B69A98; box-shadow:4px 4px 4px  
4px #B69A98 }
```

# Background

The CSS property to change the background color of an element to Decimal 11967128 is called "background". The background property can be set on classes, ids or directly on the HTML element.

```
.background, #background, body{  
background:#B69A98 }
```

If only the background color should be changed can be used:

```
.background{ background-color:#B69A98 }
```

This example shows the color as background, it is applied via the CSS property "background".

To optimize and compress your CSS code, you can use our [online CSS compressor and optimizer](#) based on csstidy. If you want to create a linear or radial gradient as background or border, check our [CSS Gradient Generator](#).



Hey! You found this booklet interesting? Support Converting Colors with the new Membership Option!

The pro membership hides all ads, plus gives you double the colors in the color bucket, and more awesome pro features!

**[Learn more, Memberships starting at \\$2.50/m!](#)**

**Follow me  
on Twitter!**

@ConvertingColor