

Converting Colors

Decimal(11967651)

Have a look what the booklet for
Decimal(11967651) contains.

Decimal(11967651)	3
<i>Conversions</i>	4
<i>Details</i>	6
<i>Harmonies</i>	11
<i>Previews</i>	23
<i>Color Blindness Simulation</i>	26
<i>CSS Examples</i>	29

Color

Decimal(11967651)

Conversions

Conversions Part 1

Format	Color
Hex	B69CA3
RGB	182, 156, 163
RGB Percent	71%, 61%, 64%
CMY	0.2863, 0.3882, 0.3608
CMYK	0.00, 0.14, 0.10, 0.29
HSL	344°, 15%, 66%
HSV	344°, 14%, 71%
XYZ	37.7907, 36.3664, 39.6780
YIQ	164.5720, 13.2490, 7.6890

Conversions

Conversions Part 2

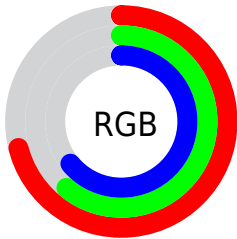
Format	Color
RYB	182, 156, 163
Decimal	11967651
CIELab	66.80, 10.77, -0.10
CIELCh	67, 10.774, 359.482
Yxy	36.3664, 0.3320, 0.3195
Android (android.graphics.Color)	4290157731 (0xFFB69CA3)
YUV	164.5720, -0.7750, 15.2844
Hunter-Lab	60.3045, 6.3268, 3.2027

Details

The Decimal color **11967651** is a light color, and the websafe version is hex **CC9999**. A complement of this color would be **10270383**, and the grayscale version is **10855845**.

A 20% lighter version of the original color is **15651802**, and **8481135** is the 20% darker color. If you saturate the color by 10%, you get **11963030**, and if you desaturate by 10%, it is **11972272**.

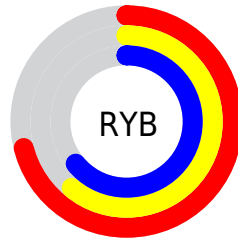
Distribution



Red (71%)

Green (61%)

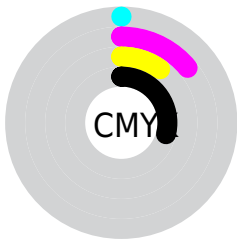
Blue (64%)



Red (71%)

Yellow (61%)

Blue (64%)

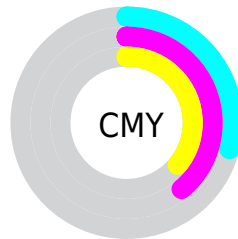


Cyan (0%)

Magenta (14%)

Yellow (10%)

Black (29%)



Cyan (29%)

Magenta (39%)

Yellow (36%)

Brightness & Saturation Gradients

These gradients show how the Decimal color 11967651 changes by changing the brightness by 10 percent. The first figure shows a shift by +10% for each color and the second figure -10%.

Similar to the brightness gradients but the following saturation gradients show a change of the Decimal color 11967651 by changing the saturation by 10% instead.



11967651



11967651

16777215



10191497



15651802



8481135



16773110



6836567



5192256



3679274



2232085



0



11967651



11967651



11963030



11972272

 11958408

 11976894

 11953531

 11981771

 11948910

 11986392

 11944288

 11991014

 11939667

 11993075

 11935046

 11993087

 11930169

 11927601

Harmonies

Analogous

The Analogous color harmony consists of three colors that are next to each other on the color wheel.



11509164



11967651



12033433

Triad

The Triadic color harmony groups three colors that are evenly spaced from another and form a triangle on the color wheel.



11967651



10528146



9348787

Complementary

The Complementary color scheme is a pair of colors which are on the opposite of each other on the color wheel.



11967651



10270383

Split Complementary

Split-complementary colors differ from the complementary color scheme. The scheme consists of three colors, the original color and two neighbors of the complement color.



9087148



11967651



9807768

Square

The Square scheme is like the rectangle color scheme, but the four colors are evenly spaced on the color wheel.



11967651



11248271



9283746



10003382

Rectangle

The Rectangle color scheme consists of four colors that form a rectangle on the color wheel.



11967651



11902612



9283746



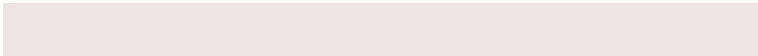
9217969

Sweetspot

The Sweet Spot groups the original color and five complimentary colors.



11967651



15590630



11508918



7893619



16250871



7895160

Same Dimension

The Same Dimension uses a secret algorithm to generate beautiful new colors.



11967651



15582672



11969180



6050645



10223658



1835016

Inverse Universe

The Inverse Universe completely reimagines the original color for something new.



11967651



15582672



10268854



6050645



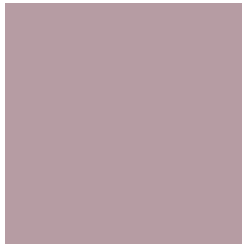
10223658



1835016

Previews

White Background



This preview shows how the Decimal color 11967651 looks on a white background.

Color Contrast Check

Large Text (above 18pt) WCAG AA × Fail

Any Text WCAG AA × Fail

Large Text (above 18pt) WCAG AAA × Fail

Any Text WCAG AAA × Fail

Black Background



This preview shows how the Decimal color 11967651 looks on a black background.

Color Contrast Check

Large Text (above 18pt) WCAG AA ✓ Pass

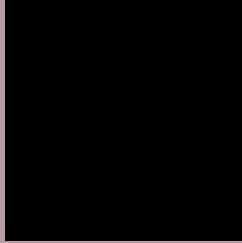
Any Text WCAG AA ✓ Pass

Large Text (above 18pt) WCAG AAA ✓ Pass

Any Text WCAG AAA ✓ Pass

If you want to check with other color combinations, try the [Color Contrast Checker](#).

Decimal 11967651 Background



This preview shows how black text looks on a background with the Decimal color 11967651.



This preview shows how white text looks on a background with the Decimal color 11967651.

Color Blindness Simulation

Color vision deficiency is a very complex topic, and I could not describe the different causes any better than Wikipedia does, so if you want to learn more, you should check out their [article about color blindness](#).


Dichromacy



Original Color
11967651

Protanopia
10789542

Deuteranopia
11705763



Tritanopia
12032935

Trichromacy



Original Color
11967651

Protanomaly
11247781

Deuteranomaly
11771299

Tritanomaly
12032934

Monochromacy



Original Color
11967651

Achromatopsia
10855845

Achromatomaly
11248292

CSS Examples

Text

The CSS property to change the color of the text to Decimal 11967651 is called "color". The color property can be set on classes, ids or directly on the HTML element.

This example shows how text in the color #B69CA3 looks like.

```
.text, #text, p{  
    color:#B69CA3  
}
```

If you want to add a text shadow in that color use the text-shadow property, you can generate a text shadow directly with our [CSS Text Shadow Generator](#).

Here you see how black text with a 4 pixel #B69CA3 colored shadow looks like.

```
.shadow{ text-shadow: 4px 4px 2px #B69CA3  
}
```

Border

The CSS property to change the border of an element to Decimal 11967651 is called "border". The border property can be set on classes, ids or directly on the HTML element.

This example shows the color as border, it can be applied via the CSS property "border" or "border-color".

```
.border, #border, table{ border:4px solid  
#B69CA3 }
```

If only the border color should be changed use the property `border-color`.

```
.border{ border-color:#B69CA3 }
```

If you want to add a box shadow in that color use:

Here you see how a box with a 4 pixel #B69CA3 colored shadow looks like.

```
.boxshadow{ -moz-box-shadow:4px 4px 4px  
4px #B69CA3; -webkit-box-shadow:4px 4px  
4px 4px #B69CA3; box-shadow:4px 4px 4px  
4px #B69CA3 }
```

Background

The CSS property to change the background color of an element to Decimal 11967651 is called "background". The background property can be set on classes, ids or directly on the HTML element.

```
.background, #background, body{  
background:#B69CA3 }
```

If only the background color should be changed can be used:

```
.background{ background-color:#B69CA3 }
```

This example shows the color as background, it is applied via the CSS property "background".

To optimize and compress your CSS code, you can use our [online CSS compressor and optimizer](#) based on csstidy. If you want to create a linear or radial gradient as background or border, check our [CSS Gradient Generator](#).

Hey! You found this booklet interesting? Support Converting Colors with the new Membership Option!

The pro membership hides all ads, plus gives you double the colors in the color bucket, and more awesome pro features!

[Learn more, Memberships starting at \\$2.50/m!](#)

**Follow me
on Twitter!**

@ConvertingColor