

Converting Colors

Decimal(11967910)

Have a look what the booklet for
Decimal(11967910) contains.

Decimal(11967910)	3
<i>Conversions</i>	4
<i>Details</i>	6
<i>Harmonies</i>	11
<i>Previews</i>	23
<i>Color Blindness Simulation</i>	26
<i>CSS Examples</i>	29

Color

Decimal(11967910)

Conversions

Conversions Part 1

Format	Color
Hex	B69DA6
RGB	182, 157, 166
RGB Percent	71%, 62%, 65%
CMY	0.2863, 0.3843, 0.3490
CMYK	0.00, 0.14, 0.09, 0.29
HSL	338°, 15%, 66%
HSV	338°, 14%, 71%
XYZ	38.2313, 36.8122, 41.1669
YIQ	165.5010, 12.0110, 8.0990

Conversions

Conversions Part 2

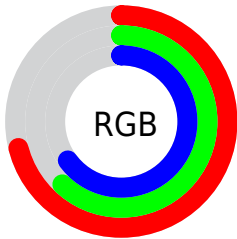
Format	Color
RYB	182, 157, 166
Decimal	11967910
CIELab	67.14, 10.74, -1.28
CIElCh	67, 10.820, 353.199
Yxy	36.8122, 0.3290, 0.3168
Android (android.graphics.Color)	4290157990 (0xFFB69DA6)
YUV	165.5010, 0.2460, 14.4696
Hunter-Lab	60.6731, 6.2986, 2.2427

Details

The Decimal color **11967910** is a light color, and the websafe version is hex **999999**. A complement of this color would be **10335917**, and the grayscale version is **10855845**.

A 20% lighter version of the original color is **15652061**, and **8481394** is the 20% darker color. If you saturate the color by 10%, you get **11963290**, and if you desaturate by 10%, it is **11972530**.

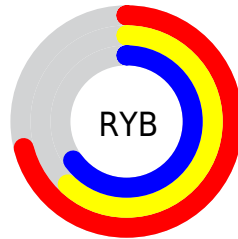
Distribution



Red (71%)

Green (62%)

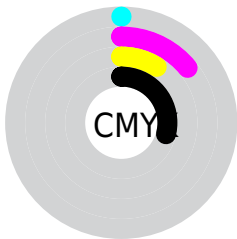
Blue (65%)



Red (71%)

Yellow (62%)

Blue (65%)

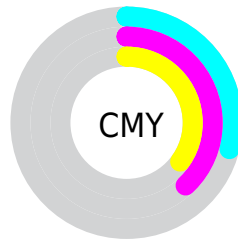


Cyan (0%)

Magenta (14%)

Yellow (9%)

Black (29%)



Cyan (29%)

Magenta (38%)

Yellow (35%)

Brightness & Saturation Gradients

These gradients show how the Decimal color 11967910 changes by changing the brightness by 10 percent. The first figure shows a shift by +10% for each color and the second figure -10%.

Similar to the brightness gradients but the following saturation gradients show a change of the Decimal color 11967910 by changing the saturation by 10% instead.

 11967910

 11967910

16777215

 10191756

 15652061

 8481394

 16773370

 6836570

 5192258

 3679532

 2232344

 0

 11967910

 11967910

 11963290

 11972530

 11958671

 11977149

 11953795

 11982025

 11949175

 11986645

 11944556

 11991264

 11939936

 11993068

 11935316

 11993080

 11930441

 11993087

 11927618

Harmonies

Analogous

The Analogous color harmony consists of three colors that are next to each other on the color wheel.



11444143



11967910



12164508

Triad

The Triadic color harmony groups three colors that are evenly spaced from another and form a triangle on the color wheel.



11967910



10724753



9349299

Complementary

The Complementary color scheme is a pair of colors which are on the opposite of each other on the color wheel.



11967910



10335917

Split Complementary

Split-complementary colors differ from the complementary color scheme. The scheme consists of three colors, the original color and two neighbors of the complement color.



9152939



11967910



10004632

Square

The Square scheme is like the rectangle color scheme, but the four colors are evenly spaced on the color wheel.



11967910



11444880



9415073



9938358

Rectangle

The Rectangle color scheme consists of four colors that form a rectangle on the color wheel.



11967910



12033686



9415073



9218224

Sweetspot

The Sweet Spot groups the original color and five complimentary colors.



11967910



15590631



11378102



7893620



16250871



7895160

Same Dimension

The Same Dimension uses a secret algorithm to generate beautiful new colors.



11967910



15583189



11968669



6050646



10223672



1835018

Inverse Universe

The Inverse Universe completely reimagines the original color for something new.



11967910



15583189



10335158



6050646



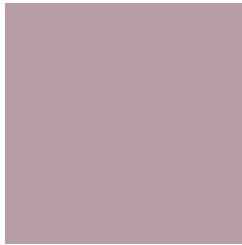
10223672



1835018

Previews

White Background



This preview shows how the Decimal color 11967910 looks on a white background.

Color Contrast Check

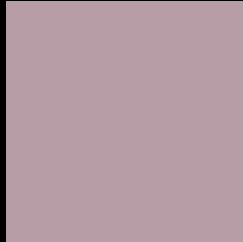
Large Text (above 18pt) WCAG AA × Fail

Any Text WCAG AA × Fail

Large Text (above 18pt) WCAG AAA × Fail

Any Text WCAG AAA × Fail

Black Background



This preview shows how the Decimal color 11967910 looks on a black background.

Color Contrast Check

Large Text (above 18pt) WCAG AA ✓ Pass

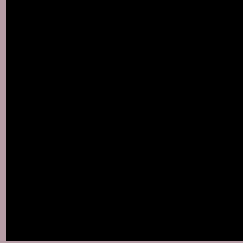
Any Text WCAG AA ✓ Pass

Large Text (above 18pt) WCAG AAA ✓ Pass

Any Text WCAG AAA ✓ Pass

If you want to check with other color combinations, try the [Color Contrast Checker](#).

Decimal 11967910 Background



This preview shows how black text looks on a background with the Decimal color 11967910.



This preview shows how white text looks on a background with the Decimal color 11967910.

Color Blindness Simulation

Color vision deficiency is a very complex topic, and I could not describe the different causes any better than Wikipedia does, so if you want to learn more, you should check out their [article about color blindness](#).

Dichromacy



Original Color

11967910

Protanopia

10855337

Deuteranopia

11706022



Tritanopia
11967913

Trichromacy



Original Color
11967910

Protanomaly
11248040

Deuteranomaly
11771558

Tritanomaly
11967912

Monochromacy



Original Color
11967910

Achromatopsia
10921638

Achromatomaly
11314086

CSS Examples

Text

The CSS property to change the color of the text to Decimal 11967910 is called "color". The color property can be set on classes, ids or directly on the HTML element.

This example shows how text in the color #B69DA6 looks like.

```
.text, #text, p{  
    color:#B69DA6  
}
```

If you want to add a text shadow in that color use the text-shadow property, you can generate a text shadow directly with our [CSS Text Shadow Generator](#).

Here you see how black text with a 4 pixel #B69DA6 colored shadow looks like.

```
.shadow{ text-shadow: 4px 4px 2px #B69DA6
}
```

Border

The CSS property to change the border of an element to Decimal 11967910 is called "border". The border property can be set on classes, ids or directly on the HTML element.

This example shows the color as border, it can be applied via the CSS property "border" or "border-color".

```
.border, #border, table{ border:4px solid
#B69DA6 }
```

If only the border color should be changed use the property `border-color`.

```
.border{ border-color:#B69DA6 }
```

If you want to add a box shadow in that color use:

Here you see how a box with a 4 pixel #B69DA6 colored shadow looks like.

```
.boxshadow{ -moz-box-shadow:4px 4px 4px  
4px #B69DA6; -webkit-box-shadow:4px 4px  
4px 4px #B69DA6; box-shadow:4px 4px 4px  
4px #B69DA6 }
```

Background

The CSS property to change the background color of an element to Decimal 11967910 is called "background". The background property can be set on classes, ids or directly on the HTML element.

```
.background, #background, body{  
background:#B69DA6 }
```

If only the background color should be changed can be used:

```
.background{ background-color:#B69DA6 }
```

This example shows the color as background, it is applied via the CSS property "background".

To optimize and compress your CSS code, you can use our [online CSS compressor and optimizer](#) based on csstidy. If you want to create a linear or radial gradient as background or border, check our [CSS Gradient Generator](#).

Hey! You found this booklet interesting? Support Converting Colors with the new Membership Option!

The pro membership hides all ads, plus gives you double the colors in the color bucket, and more awesome pro features!

[Learn more, Memberships starting at \\$2.50/m!](#)

**Follow me
on Twitter!**

@ConvertingColor