

# Converting Colors

Decimal(11972536)

Have a look what the booklet for  
Decimal(11972536) contains.

|  |    |
|--|----|
| <b>Decimal(11972536)</b> .....                 | 3  |
| <i><b>Conversions</b></i> .....                | 4  |
| <i><b>Details</b></i> .....                    | 6  |
| <i><b>Harmonies</b></i> .....                  | 11 |
| <i><b>Previews</b></i> .....                   | 23 |
| <i><b>Color Blindness Simulation</b></i> ..... | 26 |
| <i><b>CSS Examples</b></i> .....               | 29 |

# **Color**

**Decimal(11972536)**

# Conversions

## Conversions Part 1

| <b>Format</b> | <b>Color</b>              |
|---------------|---------------------------|
| Hex           | B6AFB8                    |
| RGB           | 182, 175, 184             |
| RGB Percent   | 71%, 69%, 72%             |
| CMY           | 0.2863, 0.3137, 0.2784    |
| CMYK          | 0.01, 0.05, 0.00, 0.28    |
| HSL           | 287°, 6%, 70%             |
| HSV           | 287°, 5%, 72%             |
| XYZ           | 43.2731, 44.0657, 51.5722 |
| YIQ           | 178.1190, 1.2830, 4.2830  |

# Conversions

## Conversions Part 2

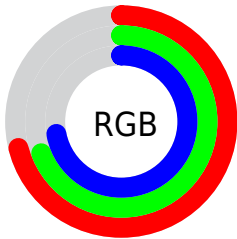
| <b>Format</b>                       | <b>Color</b>                |
|-------------------------------------|-----------------------------|
| <b>RYB</b>                          | 182, 175, 184               |
| Decimal                             | 11972536                    |
| CIELab                              | 72.27, 4.16, -3.71          |
| CIELCh                              | 72, 5.575, 318.318          |
| Yxy                                 | 44.0657, 0.3115,<br>0.3172  |
| Android<br>(android.graphics.Color) | 4290162616<br>(0xFFB6AFB8)  |
| YUV                                 | 178.1190, 2.8993,<br>3.4036 |
| Hunter-Lab                          | 66.3820, 0.1920,<br>0.4050  |

# Details

The Decimal color **11972536** is a light color, and the websafe version is hex **999999**. A complement of this color would be **11647151**, and the grayscale version is **11711154**.

A 20% lighter version of the original color is **15656944**, and **8485763** is the 20% darker color. If you saturate the color by 10%, you get **11705784**, and if you desaturate by 10%, it is **12239288**.

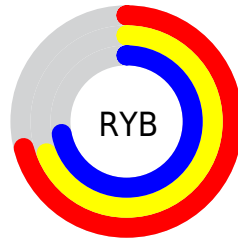
# Distribution



Red (71%)

Green (69%)

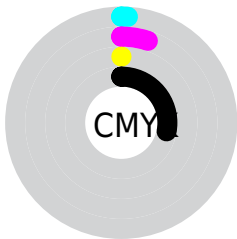
Blue (72%)



Red (71%)

Yellow (69%)

Blue (72%)

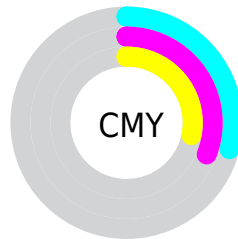


Cyan (1%)

Magenta (5%)

Yellow (0%)

Black (28%)



Cyan (29%)

Magenta (31%)

Yellow (28%)

# Brightness & Saturation Gradients

These gradients show how the Decimal color 11972536 changes by changing the brightness by 10 percent. The first figure shows a shift by +10% for each color and the second figure -10%.

Similar to the brightness gradients but the following saturation gradients show a change of the Decimal color 11972536 by changing the saturation by 10% instead.



■ 11972536

16777215

■ 15656944

■ 11972536

■ 10196125

■ 8485763

■ 6840938

■ 5261906

■ 3748667

■ 2367013

■ 918800

■ 0

■ 11972536

■ 11972536

11705784

12239288

11438776

12506296

11172024

12773048

10905016

13040056

10638264

13303736

10305976

13631416

10038968

13893560

9772216

14155704

9505208

14417848

# Harmonies

## Analogous

The Analogous color harmony consists of three colors that are next to each other on the color wheel.



11579835



11972536



12299955

# Triad

The Triadic color harmony groups three colors that are evenly spaced from another and form a triangle on the color wheel.



11972536



12103847



10859700

# Complementary

The Complementary color scheme is a pair of colors which are on the opposite of each other on the color wheel.



11972536



11647151

# Split Complementary

Split-complementary colors differ from the complementary color scheme. The scheme consists of three colors, the original color and two neighbors of the complement color.



10990767



11972536



11711144

# Square

The Square scheme is like the rectangle color scheme, but the four colors are evenly spaced on the color wheel.



11972536



12300202



11318186



10925241

# Rectangle

The Rectangle color scheme consists of four colors that form a rectangle on the color wheel.



11972536



12365488



11318186



10859698



# Sweetspot

The Sweet Spot groups the original color and five complimentary colors.



11972536



15724016



11514296



7894904



16250871



7895160



# Same Dimension

The Same Dimension uses a secret algorithm to generate beautiful new colors.



11972536



15589872



12103606



5920092



7930012



1441820



# Inverse Universe

The Inverse Universe completely reimagines the original color for something new.



12103601



15786469



11516081



6051159



10223651

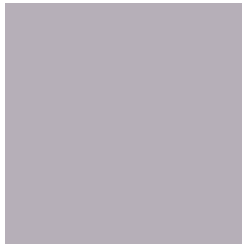


1835014



# Previews

## White Background



This preview shows how the Decimal color 11972536 looks on a white background.

## Color Contrast Check

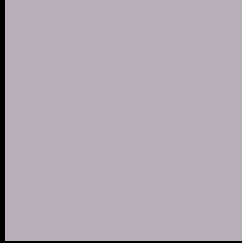
Large Text (above 18pt) WCAG AA × Fail

Any Text WCAG AA × Fail

Large Text (above 18pt) WCAG AAA × Fail

Any Text WCAG AAA × Fail

# Black Background



This preview shows how the Decimal color 11972536 looks on a black background.

## Color Contrast Check

Large Text (above 18pt) WCAG AA ✓ Pass

Any Text WCAG AA ✓ Pass

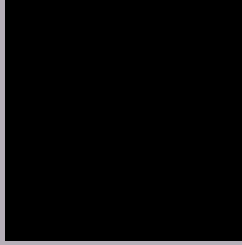
Large Text (above 18pt) WCAG AAA ✓ Pass

Any Text WCAG AAA ✓ Pass

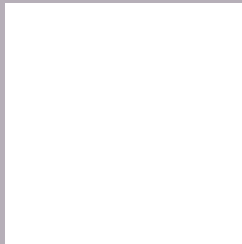
If you want to check with other color combinations, try the [Color Contrast Checker](#).



## Decimal 11972536 Background



This preview shows how black text looks on a background with the Decimal color 11972536.



This preview shows how white text looks on a background with the Decimal color 11972536.

# Color Blindness Simulation

Color vision deficiency is a very complex topic, and I could not describe the different causes any better than Wikipedia does, so if you want to learn more, you should check out their [article about color blindness](#).

## Dichromacy



**Original Color**  
11972536

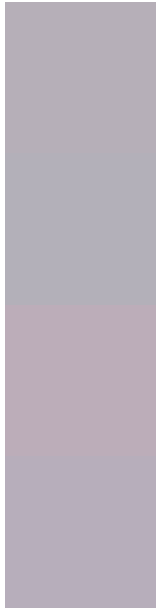
**Protanopia**  
11710649

**Deuteranopia**  
12561593



**Tritanopia**  
12037820

# Trichromacy



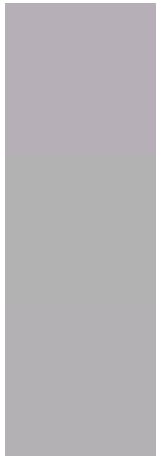
**Original Color**  
11972536

**Protanomaly**  
11776185

**Deuteranomaly**  
12365241

**Tritanomaly**  
12037819

# Monochromacy



**Original Color**  
11972536

**Achromatopsia**  
11711154

**Achromatomaly**  
11776436

# CSS Examples

## Text

The CSS property to change the color of the text to Decimal 11972536 is called "color". The color property can be set on classes, ids or directly on the HTML element.

This example shows how text in the color #B6AFB8 looks like.

```
.text, #text, p{  
    color:#B6AFB8  
}
```

If you want to add a text shadow in that color use the text-shadow property, you can generate a text shadow directly with our [CSS Text Shadow Generator](#).

Here you see how black text with a 4 pixel #B6AFB8 colored shadow looks like.

```
.shadow{ text-shadow: 4px 4px 2px #B6AFB8
}
```

## Border

The CSS property to change the border of an element to Decimal 11972536 is called "border". The border property can be set on classes, ids or directly on the HTML element.

This example shows the color as border, it can be applied via the CSS property "border" or "border-color".

```
.border, #border, table{ border:4px solid
#B6AFB8 }
```

If only the border color should be changed use the property `border-color`.

```
.border{ border-color:#B6AFB8 }
```

If you want to add a box shadow in that color use:

Here you see how a box with a 4 pixel #B6AFB8 colored shadow looks like.

```
.boxshadow{ -moz-box-shadow:4px 4px 4px  
4px #B6AFB8; -webkit-box-shadow:4px 4px  
4px 4px #B6AFB8; box-shadow:4px 4px 4px  
4px #B6AFB8 }
```

# Background

The CSS property to change the background color of an element to Decimal 11972536 is called "background". The background property can be set on classes, ids or directly on the HTML element.

```
.background, #background, body{  
background:#B6AFB8 }
```

If only the background color should be changed can be used:

```
.background{ background-color:#B6AFB8 }
```

This example shows the color as background, it is applied via the CSS property "background".

To optimize and compress your CSS code, you can use our [online CSS compressor and optimizer](#) based on csstidy. If you want to create a linear or radial gradient as background or border, check our [CSS Gradient Generator](#).



Hey! You found this booklet interesting? Support Converting Colors with the new Membership Option!

The pro membership hides all ads, plus gives you double the colors in the color bucket, and more awesome pro features!

**[Learn more, Memberships starting at \\$2.50/m!](#)**

**Follow me  
on Twitter!**

@ConvertingColor