

# Converting Colors

Decimal(12022344)

Have a look what the booklet for  
Decimal(12022344) contains.

<b>Decimal(12022344)</b> .....	3
<i><b>Conversions</b></i> .....	4
<i><b>Details</b></i> .....	6
<i><b>Harmonies</b></i> .....	11
<i><b>Previews</b></i> .....	23
<i><b>Color Blindness Simulation</b></i> .....	26
<i><b>CSS Examples</b></i> .....	29

# Color

**Decimal(12022344)**

# Conversions

## Conversions Part 1

<b>Format</b>	<b>Color</b>
Hex	B77248
RGB	183, 114, 72
RGB Percent	72%, 45%, 28%
CMY	0.2824, 0.5529, 0.7176
CMYK	0.00, 0.38, 0.61, 0.28
HSL	23°, 44%, 50%
HSV	23°, 61%, 72%
XYZ	26.7155, 22.5698, 9.0792
YIQ	129.8430, 54.6060, 1.5660

# Conversions

## Conversions Part 2

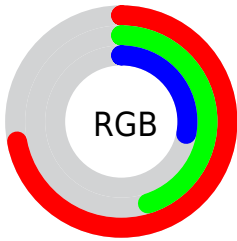
<b>Format</b>	<b>Color</b>
<b>RYB</b>	183, 140, 72
Decimal	12022344
CIELab	54.63, 23.10, 34.39
CIELCh	55, 41.431, 56.112
Yxy	22.5698, 0.4577, 0.3867
Android (android.graphics.Color)	4290212424 (0xFFB77248)
YUV	129.8430, -28.5166, 46.6187
Hunter-Lab	47.5077, 17.2392, 21.9244

# Details

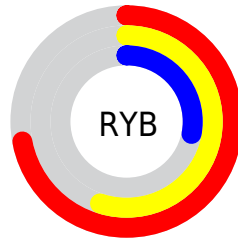
The Decimal color **12022344** is a dark color, and the websafe version is hex **996633**. A complement of this color would be **4754871**, and the grayscale version is **8553090**.

A 20% lighter version of the original color is **15902330**, and **8274202** is the 20% darker color. If you saturate the color by 10%, you get **12019510**, and if you desaturate by 10%, it is **12025178**.

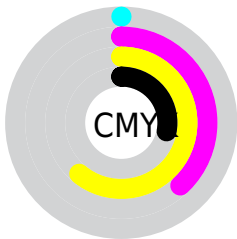
# Distribution



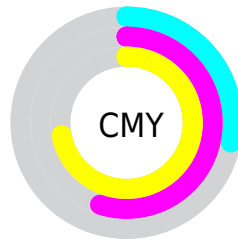
- Red (72%)
- Green (45%)
- Blue (28%)



- Red (72%)
- Yellow (55%)
- Blue (28%)



- Cyan (0%)
- Magenta (38%)
- Yellow (61%)
- Black (28%)



- Cyan (28%)
- Magenta (55%)
- Yellow (72%)

# Brightness & Saturation Gradients

These gradients show how the Decimal color 12022344 changes by changing the brightness by 10 percent. The first figure shows a shift by +10% for each color and the second figure -10%.

Similar to the brightness gradients but the following saturation gradients show a change of the Decimal color 12022344 by changing the saturation by 10% instead.



 12022344

 12022344

16777215

 10115377

 15902330

 8274202

 16761492

 6433282

 16768686

 4658176

 16775882

 2949120

 16777190

 0

 12022344

 12022344

 12019510

 12025178

 12016419

 12028269

 12013585

 12031103

 12010752

 12034193

 12037028

 12039862

 12042952

 12045786

 12048621

# Harmonies

## Analogous

The Analogous color harmony consists of three colors that are next to each other on the color wheel.



12937061



12022344



10256185

# Triad

The Triadic color harmony groups three colors that are evenly spaced from another and form a triangle on the color wheel.



12022344



38269



8289219

# Complementary

The Complementary color scheme is a pair of colors which are on the opposite of each other on the color wheel.



12022344



4754871

# Split Complementary

Split-complementary colors differ from the complementary color scheme. The scheme consists of three colors, the original color and two neighbors of the complement color.



3442890



12022344



38049

# Square

The Square scheme is like the rectangle color scheme, but the four colors are evenly spaced on the color wheel.



12022344



5017945



37053



11234731

# Rectangle

The Rectangle color scheme consists of four colors that form a rectangle on the color wheel.



12022344



8750907



37053



6979783



# Sweetspot

The Sweet Spot groups the original color and five complimentary colors.



12022344



15586242



12011662



7890781



16250871



7895160



# Same Dimension

The Same Dimension uses a secret algorithm to generate beautiful new colors.



12022344



15565376



12036168



6051411



10238720



1837824



# Inverse Universe

The Inverse Universe completely reimagines the original color for something new.



4754871



4238573



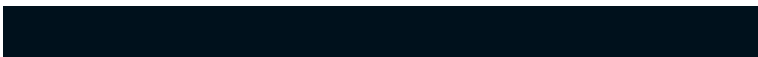
4741047



5462108



24988

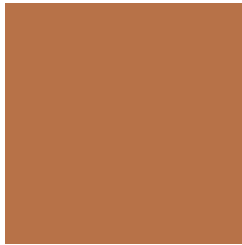


4380



# Previews

## White Background



This preview shows how the Decimal color 12022344 looks on a white background.

## Color Contrast Check

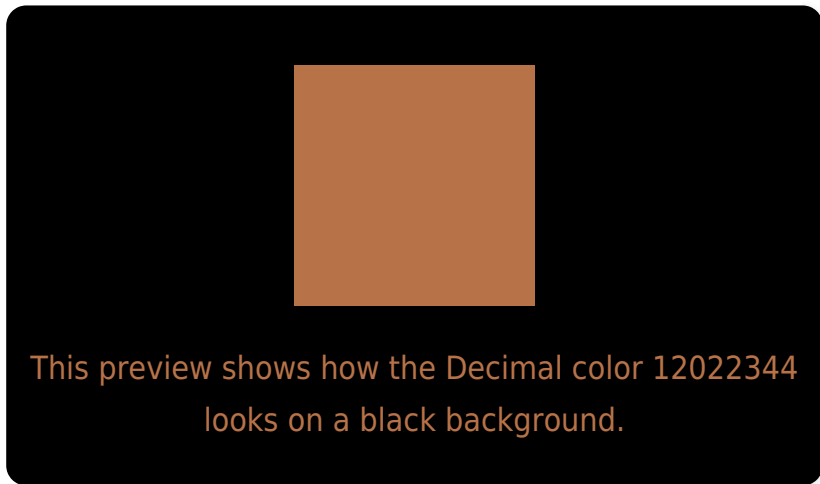
Large Text (above 18pt) WCAG AA ✓ Pass

Any Text WCAG AA × Fail

Large Text (above 18pt) WCAG AAA × Fail

Any Text WCAG AAA × Fail

# Black Background



## Color Contrast Check

Large Text (above 18pt) WCAG AA ✓ Pass

Any Text WCAG AA ✓ Pass

Large Text (above 18pt) WCAG AAA ✓ Pass

Any Text WCAG AAA × Fail

If you want to check with other color combinations, try the [Color Contrast Checker](#).



## Decimal 12022344 Background



This preview shows how black text looks on a background with the Decimal color 12022344.



This preview shows how white text looks on a background with the Decimal color 12022344.

# Color Blindness Simulation

Color vision deficiency is a very complex topic, and I could not describe the different causes any better than Wikipedia does, so if you want to learn more, you should check out their [article about color blindness](#).

## Dichromacy





**Tritanopia**  
12217717

# Trichromacy



**Original Color**  
12022344

**Protanomaly**  
10386764

**Deuteranomaly**  
11106631

**Tritanomaly**  
12152677

# Monochromacy



**Original Color**  
12022344

**Achromatopsia**  
8553090

**Achromatomaly**  
9796717

# CSS Examples

## Text

The CSS property to change the color of the text to Decimal 12022344 is called "color". The color property can be set on classes, ids or directly on the HTML element.

This example shows how text in the color #B77248 looks like.

```
.text, #text, p{  
  color:#B77248  
}
```

If you want to add a text shadow in that color use the text-shadow property, you can generate a text shadow directly with our [CSS Text Shadow Generator](#).

Here you see how black text with a 4 pixel #B77248 colored shadow looks like.

```
.shadow{ text-shadow: 4px 4px 2px #B77248
}
```

## Border

The CSS property to change the border of an element to Decimal 12022344 is called "border". The border property can be set on classes, ids or directly on the HTML element.

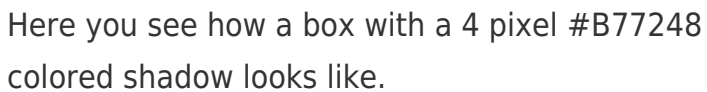
This example shows the color as border, it can be applied via the CSS property "border" or "border-color".

```
.border, #border, table{ border:4px solid
#B77248 }
```

If only the border color should be changed use the property `border-color`.

```
.border{ border-color:#B77248 }
```

If you want to add a box shadow in that color use:

A rectangular box with a 4px orange shadow. The box is white with a thin orange border. The shadow is a solid orange color, 4 pixels wide and 4 pixels high, positioned to the right and bottom of the box.

Here you see how a box with a 4 pixel #B77248 colored shadow looks like.

```
.boxshadow{ -moz-box-shadow:4px 4px 4px  
4px #B77248; -webkit-box-shadow:4px 4px  
4px 4px #B77248; box-shadow:4px 4px 4px  
4px #B77248 }
```

# Background

The CSS property to change the background color of an element to Decimal 12022344 is called "background". The background property can be set on classes, ids or directly on the HTML element.

```
.background, #background, body{  
background:#B77248 }
```

If only the background color should be changed can be used:

```
.background{ background-color:#B77248 }
```

This example shows the color as background, it is applied via the CSS property "background".

To optimize and compress your CSS code, you can use our [online CSS compressor and optimizer](#) based on csstidy. If you want to create a linear or radial gradient as background or border, check our [CSS Gradient Generator](#).



Hey! You found this booklet interesting? Support Converting Colors with the new Membership Option!

The pro membership hides all ads, plus gives you double the colors in the color bucket, and more awesome pro features!

**[Learn more, Memberships starting at \\$2.50/m!](#)**

**Follow me  
on Twitter!**

@ConvertingColor