

Converting Colors

Decimal(12023927)

Have a look what the booklet for
Decimal(12023927) contains.

Decimal(12023927)	3
<i>Conversions</i>	4
<i>Details</i>	6
<i>Harmonies</i>	11
<i>Previews</i>	23
<i>Color Blindness Simulation</i>	26
<i>CSS Examples</i>	29

Color

Decimal(12023927)

Conversions

Conversions Part 1

Format	Color
Hex	B77877
RGB	183, 120, 119
RGB Percent	72%, 47%, 47%
CMY	0.2824, 0.5294, 0.5333
CMYK	0.00, 0.34, 0.35, 0.28
HSL	1°, 31%, 59%
HSV	1°, 35%, 72%
XYZ	29.5747, 24.8321, 20.6871
YIQ	138.7230, 37.8690, 13.0450

Conversions

Conversions Part 2

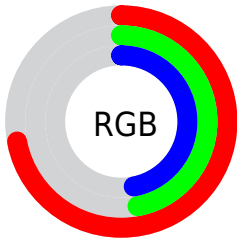
Format	Color
R_{YB}	183, 120, 119
Decimal	12023927
CIE _{Lab}	56.91, 24.54, 10.73
CIE _{LCh}	57, 26.787, 23.621
Yxy	24.8321, 0.3938, 0.3307
Android (android.graphics.Color)	4290214007 (0xFFB77877)
YUV	138.7230, -9.7234, 38.8309
Hunter-Lab	49.8318, 18.7322, 10.2688

Details

The Decimal color **12023927** is a dark color, and the websafe version is hex **996666**. A complement of this color would be **7845559**, and the grayscale version is **9145227**.

A 20% lighter version of the original color is **15773099**, and **8406855** is the 20% darker color. If you saturate the color by 10%, you get **12019301**, and if you desaturate by 10%, it is **12028553**.

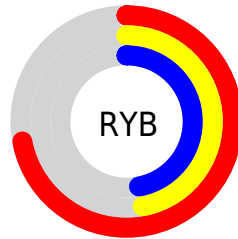
Distribution



Red (72%)

Green (47%)

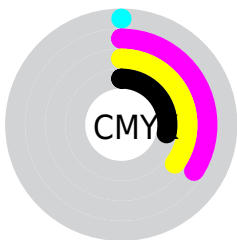
Blue (47%)



Red (72%)

Yellow (47%)

Blue (47%)

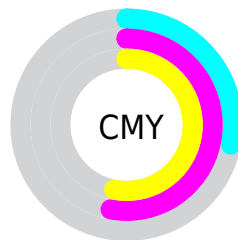


Cyan (0%)

Magenta (34%)

Yellow (35%)

Black (28%)



Cyan (28%)

Magenta (53%)

Yellow (53%)

Brightness & Saturation Gradients

These gradients show how the Decimal color 12023927 changes by changing the brightness by 10 percent. The first figure shows a shift by +10% for each color and the second figure -10%.

Similar to the brightness gradients but the following saturation gradients show a change of the Decimal color 12023927 by changing the saturation by 10% instead.

 12023927

 12023927

16777215

 10182494

 15773099

 8406855

 16763078

 6696752

 16770530

 4987164

 3408384

 1572865

 0

 12023927

 12023927

 12019301

 12028553

 12014674

 12033180

 12010048

 12037806

 12005422

 12042432

 12000795

 12047059

 11996169

 12051685

 11993856

 12056311

 12058623

Harmonies

Analogous

The Analogous color harmony consists of three colors that are next to each other on the color wheel.



11761551



12023927



11501156

Triad

The Triadic color harmony groups three colors that are evenly spaced from another and form a triangle on the color wheel.



12023927



7049836



6458550

Complementary

The Complementary color scheme is a pair of colors which are on the opposite of each other on the color wheel.



12023927



7845559

Split Complementary

Split-complementary colors differ from the complementary color scheme. The scheme consists of three colors, the original color and two neighbors of the complement color.



4428461



12023927



5281155

Square

The Square scheme is like the rectangle color scheme, but the four colors are evenly spaced on the color wheel.



12023927



8818013



3970458



8750259

Rectangle

The Rectangle color scheme consists of four colors that form a rectangle on the color wheel.



12023927



10781532



3970458



5672885

Sweetspot

The Sweet Spot groups the original color and five complimentary colors.



12023927



15587029



12023735



7891561



16250871



7895160

Same Dimension

The Same Dimension uses a secret algorithm to generate beautiful new colors.



12023927



15567754



12031863



6050643



10224128



1835008

Inverse Universe

The Inverse Universe completely reimagines the original color for something new.



7845559



9104621



7837623



5463132



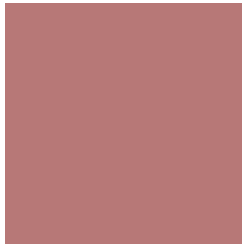
39324



7196

Previews

White Background



This preview shows how the Decimal color 12023927 looks on a white background.

Color Contrast Check

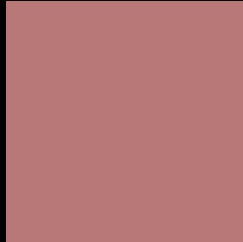
Large Text (above 18pt) WCAG AA ✓ Pass

Any Text WCAG AA ✗ Fail

Large Text (above 18pt) WCAG AAA ✗ Fail

Any Text WCAG AAA ✗ Fail

Black Background



This preview shows how the Decimal color 12023927 looks on a black background.

Color Contrast Check

Large Text (above 18pt) WCAG AA ✓ Pass

Any Text WCAG AA ✓ Pass

Large Text (above 18pt) WCAG AAA ✓ Pass

Any Text WCAG AAA × Fail

If you want to check with other color combinations, try the [Color Contrast Checker](#).

Decimal 12023927 Background



This preview shows how black text looks on a background with the Decimal color 12023927.

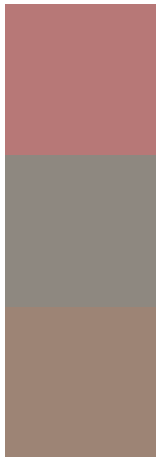


This preview shows how white text looks on a background with the Decimal color 12023927.

Color Blindness Simulation

Color vision deficiency is a very complex topic, and I could not describe the different causes any better than Wikipedia does, so if you want to learn more, you should check out their [article about color blindness](#).

Dichromacy



Original Color
12023927

Protanopia
9341056

Deuteranopia
10323061



Tritanopia
12089216

Trichromacy



Original Color
12023927

Protanomaly
10322557

Deuteranomaly
10911862

Tritanomaly
12089213

Monochromacy



Original Color
12023927

Achromatopsia
9145227

Achromatomaly
10192004

CSS Examples

Text

The CSS property to change the color of the text to Decimal 12023927 is called "color". The color property can be set on classes, ids or directly on the HTML element.

This example shows how text in the color #B77877 looks like.

```
.text, #text, p{  
  color:#B77877  
}
```

If you want to add a text shadow in that color use the text-shadow property, you can generate a text shadow directly with our [CSS Text Shadow Generator](#).

Here you see how black text with a 4 pixel #B77877 colored shadow looks like.

```
.shadow{ text-shadow: 4px 4px 2px #B77877  
}
```

Border

The CSS property to change the border of an element to Decimal 12023927 is called "border". The border property can be set on classes, ids or directly on the HTML element.

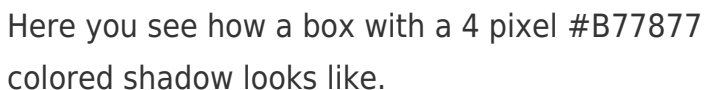
This example shows the color as border, it can be applied via the CSS property "border" or "border-color".

```
.border, #border, table{ border:4px solid  
#B77877 }
```

If only the border color should be changed use the property `border-color`.

```
.border{ border-color:#B77877 }
```

If you want to add a box shadow in that color use:



Here you see how a box with a 4 pixel `#B77877` colored shadow looks like.

```
.boxshadow{ -moz-box-shadow:4px 4px 4px  
4px #B77877; -webkit-box-shadow:4px 4px  
4px 4px #B77877; box-shadow:4px 4px 4px  
4px #B77877 }
```

Background

The CSS property to change the background color of an element to Decimal 12023927 is called "background". The background property can be set on classes, ids or directly on the HTML element.

```
.background, #background, body{  
background:#B77877 }
```

If only the background color should be changed can be used:

```
.background{ background-color:#B77877 }
```

This example shows the color as background, it is applied via the CSS property "background".

To optimize and compress your CSS code, you can use our [online CSS compressor and optimizer](#) based on csstidy. If you want to create a linear or radial gradient as background or border, check our [CSS Gradient Generator](#).

Hey! You found this booklet interesting? Support Converting Colors with the new Membership Option!

The pro membership hides all ads, plus gives you double the colors in the color bucket, and more awesome pro features!

[Learn more, Memberships starting at \\$2.50/m!](#)

**Follow me
on Twitter!**

@ConvertingColor