

Converting Colors

Decimal(12024439)

Have a look what the booklet for
Decimal(12024439) contains.

Decimal(12024439)	3
<i>Conversions</i>	4
<i>Details</i>	6
<i>Harmonies</i>	11
<i>Previews</i>	23
<i>Color Blindness Simulation</i>	26
<i>CSS Examples</i>	29

Color

Decimal(12024439)

Conversions

Conversions Part 1

Format	Color
Hex	B77A77
RGB	183, 122, 119
RGB Percent	72%, 48%, 47%
CMY	0.2824, 0.5216, 0.5333
CMYK	0.00, 0.33, 0.35, 0.28
HSL	3°, 31%, 59%
HSV	3°, 35%, 72%
XYZ	29.8177, 25.3183, 20.7681
YIQ	139.8970, 37.3190, 11.9990

Conversions

Conversions Part 2

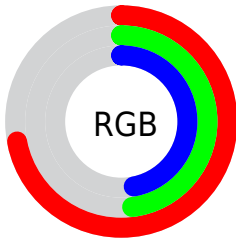
Format	Color
RYB	183, 122, 119
Decimal	12024439
CIELab	57.38, 23.43, 11.40
CIElCh	57, 26.056, 25.941
Yxy	25.3183, 0.3928, 0.3336
Android (android.graphics.Color)	4290214519 (0xFFB77A77)
YUV	139.8970, -10.3022, 37.8013
Hunter-Lab	50.3172, 17.7230, 10.7505

Details

The Decimal color **12024439** is a dark color, and the websafe version is hex **996666**. A complement of this color would be **7845047**, and the grayscale version is **9211020**.

A 20% lighter version of the original color is **15773611**, and **8407367** is the 20% darker color. If you saturate the color by 10%, you get **12020069**, and if you desaturate by 10%, it is **12028809**.

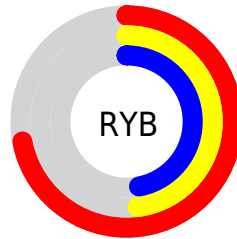
Distribution



Red (72%)

Green (48%)

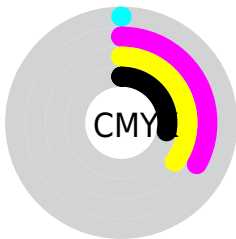
Blue (47%)



Red (72%)

Yellow (48%)

Blue (47%)

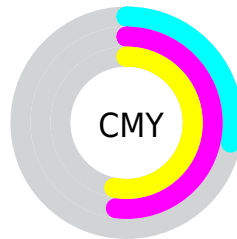


Cyan (0%)

Magenta (33%)

Yellow (35%)

Black (28%)



Cyan (28%)

Magenta (52%)

Yellow (53%)

Brightness & Saturation Gradients

These gradients show how the Decimal color 12024439 changes by changing the brightness by 10 percent. The first figure shows a shift by +10% for each color and the second figure -10%.

Similar to the brightness gradients but the following saturation gradients show a change of the Decimal color 12024439 by changing the saturation by 10% instead.

 12024439

 12024439

16777215

 10183006

 15773611

 8407367

 16763590

 6697264

 16771042

 4987675

 3408896

 1638401

 0

 12024439

 12024439

 12020069

 12028809

 12015442

 12033436

 12011072

 12037806

 12006446

 12042432

 12002075

 12046803

 11997449

 12051429

 11995392

 12055799

 12058623

Harmonies

Analogous

The Analogous color harmony consists of three colors that are next to each other on the color wheel.



11827598



12024439



11436133

Triad

The Triadic color harmony groups three colors that are evenly spaced from another and form a triangle on the color wheel.



12024439



7050352



6786487

Complementary

The Complementary color scheme is a pair of colors which are on the opposite of each other on the color wheel.



12024439



7845047

Split Complementary

Split-complementary colors differ from the complementary color scheme. The scheme consists of three colors, the original color and two neighbors of the complement color.



4821935



12024439



5346950

Square

The Square scheme is like the rectangle color scheme, but the four colors are evenly spaced on the color wheel.



12024439



8752736



4232861



9012659

Rectangle

The Rectangle color scheme consists of four colors that form a rectangle on the color wheel.



12024439



10716510



4232861



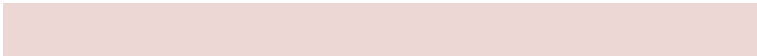
6066101

Sweetspot

The Sweet Spot groups the original color and five complimentary colors.



12024439



15587285



12023733



7891561



16250871



7895160

Same Dimension

The Same Dimension uses a secret algorithm to generate beautiful new colors.



12024439



15568522



12032375



6050643



10225408



1835264

Inverse Universe

The Inverse Universe completely reimagines the original color for something new.



7845047



9103597



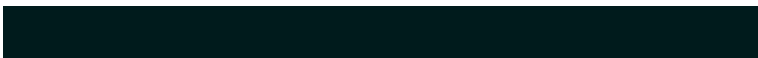
7837111



5462876



38044



6940

Previews

White Background



This preview shows how the Decimal color 12024439 looks on a white background.

Color Contrast Check

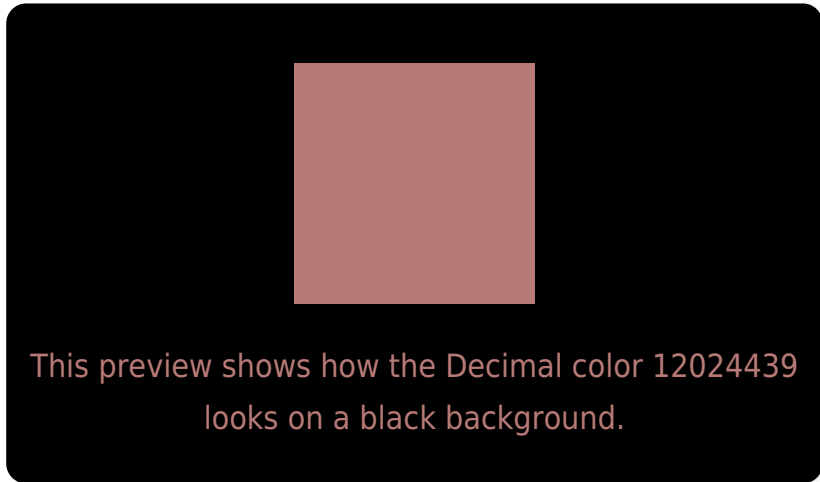
Large Text (above 18pt) WCAG AA ✓ Pass

Any Text WCAG AA × Fail

Large Text (above 18pt) WCAG AAA × Fail

Any Text WCAG AAA × Fail

Black Background



Color Contrast Check

Large Text (above 18pt) WCAG AA ✓ Pass

Any Text WCAG AA ✓ Pass

Large Text (above 18pt) WCAG AAA ✓ Pass

Any Text WCAG AAA × Fail

If you want to check with other color combinations, try the [Color Contrast Checker](#).

Decimal 12024439 Background



This preview shows how black text looks on a background with the Decimal color 12024439.

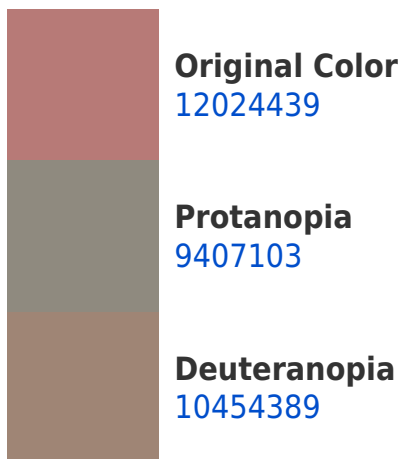


This preview shows how white text looks on a background with the Decimal color 12024439.

Color Blindness Simulation

Color vision deficiency is a very complex topic, and I could not describe the different causes any better than Wikipedia does, so if you want to learn more, you should check out their [article about color blindness](#).

Dichromacy





Tritanopia
12089473

Trichromacy



Original Color
12024439

Protanomaly
10388604

Deuteranomaly
11043190

Tritanomaly
12089725

Monochromacy



Original Color
12024439

Achromatopsia
9211020

Achromatomaly
10257796

CSS Examples

Text

The CSS property to change the color of the text to Decimal 12024439 is called "color". The color property can be set on classes, ids or directly on the HTML element.

This example shows how text in the color #B77A77 looks like.

```
.text, #text, p{  
  color:#B77A77  
}
```

If you want to add a text shadow in that color use the text-shadow property, you can generate a text shadow directly with our [CSS Text Shadow Generator](#).

Here you see how black text with a 4 pixel #B77A77 colored shadow looks like.

```
.shadow{ text-shadow: 4px 4px 2px #B77A77
}
```

Border

The CSS property to change the border of an element to Decimal 12024439 is called "border". The border property can be set on classes, ids or directly on the HTML element.

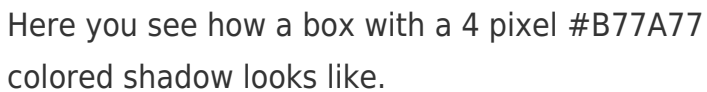
This example shows the color as border, it can be applied via the CSS property "border" or "border-color".

```
.border, #border, table{ border:4px solid
#B77A77 }
```

If only the border color should be changed use the property `border-color`.

```
.border{ border-color:#B77A77 }
```

If you want to add a box shadow in that color use:



Here you see how a box with a 4 pixel `#B77A77` colored shadow looks like.

```
.boxshadow{ -moz-box-shadow:4px 4px 4px  
4px #B77A77; -webkit-box-shadow:4px 4px  
4px 4px #B77A77; box-shadow:4px 4px 4px  
4px #B77A77 }
```

Background

The CSS property to change the background color of an element to Decimal 12024439 is called "background". The background property can be set on classes, ids or directly on the HTML element.

```
.background, #background, body{  
background:#B77A77 }
```

If only the background color should be changed can be used:

```
.background{ background-color:#B77A77 }
```

This example shows the color as background, it is applied via the CSS property "background".

To optimize and compress your CSS code, you can use our [online CSS compressor and optimizer](#) based on csstidy. If you want to create a linear or radial gradient as background or border, check our [CSS Gradient Generator](#).

Hey! You found this booklet interesting? Support Converting Colors with the new Membership Option!

The pro membership hides all ads, plus gives you double the colors in the color bucket, and more awesome pro features!

[Learn more, Memberships starting at \\$2.50/m!](#)

**Follow me
on Twitter!**

@ConvertingColor