

Converting Colors

Decimal(12026491)

Have a look what the booklet for
Decimal(12026491) contains.

Decimal(12026491)	3
<i>Conversions</i>	4
<i>Details</i>	6
<i>Harmonies</i>	11
<i>Previews</i>	23
<i>Color Blindness Simulation</i>	26
<i>CSS Examples</i>	29

Color

Decimal(12026491)

Conversions

Conversions Part 1

Format	Color
Hex	B7827B
RGB	183, 130, 123
RGB Percent	72%, 51%, 48%
CMY	0.2824, 0.4902, 0.5176
CMYK	0.00, 0.29, 0.33, 0.28
HSL	7°, 29%, 60%
HSV	7°, 33%, 72%
XYZ	31.0862, 27.4626, 22.4013
YIQ	145.0490, 33.8350, 9.0590

Conversions

Conversions Part 2

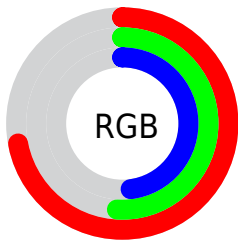
Format	Color
R_{YB}	183, 131, 123
Decimal	12026491
CIE Lab	59.40, 19.49, 11.93
CIE LCh	59, 22.854, 31.472
Yxy	27.4626, 0.3840, 0.3393
Android (android.graphics.Color)	4290216571 (0xFFB7827B)
YUV	145.0490, -10.8702, 33.2830
Hunter-Lab	52.4048, 14.1769, 11.3389

Details

The Decimal color **12026491** is a dark color, and the websafe version is hex **CC9999**. A complement of this color would be **8106167**, and the grayscale version is **9539985**.

A 20% lighter version of the original color is **15775663**, and **8409162** is the 20% darker color. If you saturate the color by 10%, you get **12022377**, and if you desaturate by 10%, it is **12030605**.

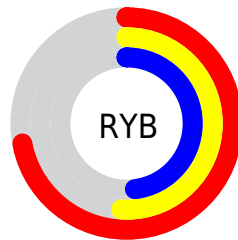
Distribution



Red (72%)

Green (51%)

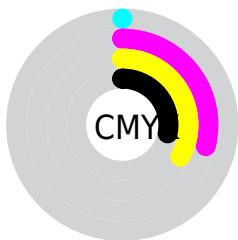
Blue (48%)



Red (72%)

Yellow (51%)

Blue (48%)

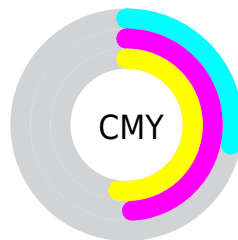


Cyan (0%)

Magenta (29%)

Yellow (33%)

Black (28%)



Cyan (28%)

Magenta (49%)

Yellow (52%)

Brightness & Saturation Gradients

These gradients show how the Decimal color 12026491 changes by changing the brightness by 10 percent. The first figure shows a shift by +10% for each color and the second figure -10%.

Similar to the brightness gradients but the following saturation gradients show a change of the Decimal color 12026491 by changing the saturation by 10% instead.

 12026491

 12026491

16777215

 10185058

 15775663

 8409162

 16765899

 6699316

 16773095

 5055263

 3476742

 2031617

 0

 12026491

 12026491

 12022377

 12030605

 12018262

 12034720

 12014148

 12038834

 12009778

 12043204

 12005664

 12047319

 12001549

 12051433

 11998464

 12055547

 12058623

Harmonies

Analogous

The Analogous color harmony consists of three colors that are next to each other on the color wheel.



11960463



12026491



11437932

Triad

The Triadic color harmony groups three colors that are evenly spaced from another and form a triangle on the color wheel.



12026491



7379067



7836087

Complementary

The Complementary color scheme is a pair of colors which are on the opposite of each other on the color wheel.



12026491



8106167

Split Complementary

Split-complementary colors differ from the complementary color scheme. The scheme consists of three colors, the original color and two neighbors of the complement color.



6198962



12026491



6068879

Square

The Square scheme is like the rectangle color scheme, but the four colors are evenly spaced on the color wheel.



12026491



8885356



5479075



9669297

Rectangle

The Rectangle color scheme consists of four colors that form a rectangle on the color wheel.



12026491



10718312



5479075



7246774

Sweetspot

The Sweet Spot groups the original color and five complimentary colors.



12026491



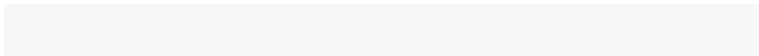
15587541



12024752



7891817



16250871



7895160

Same Dimension

The Same Dimension uses a secret algorithm to generate beautiful new colors.



12026491



15571857



12033915



6050899



10228224



1835776

Inverse Universe

The Inverse Universe completely reimagines the original color for something new.



8106167



9560813



8098487



5462876



35228



6428

Previews

White Background



This preview shows how the Decimal color 12026491 looks on a white background.

Color Contrast Check

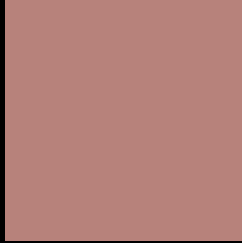
Large Text (above 18pt) WCAG AA ✓ Pass

Any Text WCAG AA × Fail

Large Text (above 18pt) WCAG AAA × Fail

Any Text WCAG AAA × Fail

Black Background



This preview shows how the Decimal color 12026491 looks on a black background.

Color Contrast Check

Large Text (above 18pt) WCAG AA ✓ Pass

Any Text WCAG AA ✓ Pass

Large Text (above 18pt) WCAG AAA ✓ Pass

Any Text WCAG AAA × Fail

If you want to check with other color combinations, try the [Color Contrast Checker](#).

Decimal 12026491 Background



This preview shows how black text looks on a background with the Decimal color 12026491.



This preview shows how white text looks on a background with the Decimal color 12026491.

Color Blindness Simulation

Color vision deficiency is a very complex topic, and I could not describe the different causes any better than Wikipedia does, so if you want to learn more, you should check out their [article about color blindness](#).


Dichromacy



Original Color
12026491

Protanopia
9801602

Deuteranopia
10848890



Tritanopia
12091530

Trichromacy



Original Color
12026491

Protanomaly
10586751

Deuteranomaly
11306874

Tritanomaly
12091781

Monochromacy



Original Color
12026491

Achromatopsia
9539985

Achromatomaly
10456201

CSS Examples

Text

The CSS property to change the color of the text to Decimal 12026491 is called "color". The color property can be set on classes, ids or directly on the HTML element.

This example shows how text in the color #B7827B looks like.

```
.text, #text, p{  
    color:#B7827B  
}
```

If you want to add a text shadow in that color use the text-shadow property, you can generate a text shadow directly with our [CSS Text Shadow Generator](#).

Here you see how black text with a 4 pixel #B7827B colored shadow looks like.

```
.shadow{ text-shadow: 4px 4px 2px #B7827B
}
```

Border

The CSS property to change the border of an element to Decimal 12026491 is called "border". The border property can be set on classes, ids or directly on the HTML element.

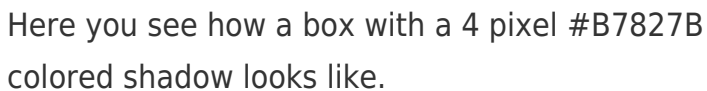
This example shows the color as border, it can be applied via the CSS property "border" or "border-color".

```
.border, #border, table{ border:4px solid
#B7827B }
```

If only the border color should be changed use the property `border-color`.

```
.border{ border-color:#B7827B }
```

If you want to add a box shadow in that color use:



Here you see how a box with a 4 pixel #B7827B colored shadow looks like.

```
.boxshadow{ -moz-box-shadow:4px 4px 4px  
4px #B7827B; -webkit-box-shadow:4px 4px  
4px 4px #B7827B; box-shadow:4px 4px 4px  
4px #B7827B }
```

Background

The CSS property to change the background color of an element to Decimal 12026491 is called "background". The background property can be set on classes, ids or directly on the HTML element.

```
.background, #background, body{  
background:#B7827B }
```

If only the background color should be changed can be used:

```
.background{ background-color:#B7827B }
```

This example shows the color as background, it is applied via the CSS property "background".

To optimize and compress your CSS code, you can use our [online CSS compressor and optimizer](#) based on csstidy. If you want to create a linear or radial gradient as background or border, check our [CSS Gradient Generator](#).

Hey! You found this booklet interesting? Support Converting Colors with the new Membership Option!

The pro membership hides all ads, plus gives you double the colors in the color bucket, and more awesome pro features!

[Learn more, Memberships starting at \\$2.50/m!](#)

**Follow me
on Twitter!**

@ConvertingColor