

# Converting Colors

Decimal(12026712)

Have a look what the booklet for  
Decimal(12026712) contains.

<b>Decimal(12026712)</b> .....	3
<i><b>Conversions</b></i> .....	4
<i><b>Details</b></i> .....	6
<i><b>Harmonies</b></i> .....	11
<i><b>Previews</b></i> .....	23
<i><b>Color Blindness Simulation</b></i> .....	26
<i><b>CSS Examples</b></i> .....	29

# Color

**Decimal(12026712)**

# Conversions

## Conversions Part 1

<b>Format</b>	<b>Color</b>
Hex	<a href="#">B78358</a>
RGB	<a href="#">183, 131, 88</a>
RGB Percent	<a href="#">72%, 51%, 35%</a>
CMY	<a href="#">0.2824, 0.4863, 0.6549</a>
CMYK	<a href="#">0.00, 0.28, 0.52, 0.28</a>
HSL	<a href="#">27°, 40%, 53%</a>
HSV	<a href="#">27°, 52%, 72%</a>
XYZ	<a href="#">29.4062, 27.0045, 12.8950</a>
YIQ	<a href="#">141.6460, 44.7950, -2.3490</a>

# Conversions

## Conversions Part 2

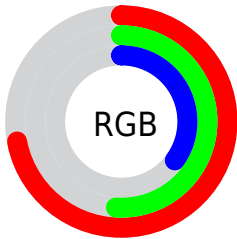
<b>Format</b>	<b>Color</b>
<b>R<sub>YB</sub></b>	183, 167, 88
Decimal	12026712
CIE Lab	58.98, 14.99, 31.06
CIE LCh	59, 34.484, 64.238
Yxy	27.0045, 0.4243, 0.3896
Android (android.graphics.Color)	4290216792 (0xFFB78358)
YUV	141.6460, -26.4475, 36.2675
Hunter-Lab	51.9658, 10.0686, 21.6636

# Details

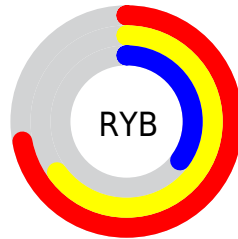
The Decimal color **12026712** is a dark color, and the websafe version is hex **CC9966**. A complement of this color would be **5803191**, and the grayscale version is **9342606**.

A 20% lighter version of the original color is **15841419**, and **8343849** is the 20% darker color. If you saturate the color by 10%, you get **12024134**, and if you desaturate by 10%, it is **12029290**.

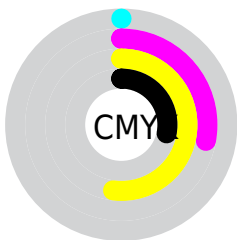
# Distribution



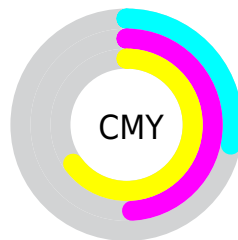
- Red (72%)
- Green (51%)
- Blue (35%)



- Red (72%)
- Yellow (65%)
- Blue (35%)



- Cyan (0%)
- Magenta (28%)
- Yellow (52%)
- Black (28%)



- Cyan (28%)
- Magenta (49%)
- Yellow (65%)

# Brightness & Saturation Gradients

These gradients show how the Decimal color 12026712 changes by changing the brightness by 10 percent. The first figure shows a shift by +10% for each color and the second figure -10%.

Similar to the brightness gradients but the following saturation gradients show a change of the Decimal color 12026712 by changing the saturation by 10% instead.





12026712



12026712

16777215



10185280



15841419



8343849



16766117



6568467



16773312



4924416



16777180



3149824



16777209



1507328



0



12026712



12026712



12024134



12029290

■ 12021555

■ 12031869

■ 12018977

■ 12034447

■ 12016399

■ 12037025

■ 12014336

■ 12039603

■ 12042182

■ 12044760

■ 12047338

■ 12049917

# Harmonies

## Analogous

The Analogous color harmony consists of three colors that are next to each other on the color wheel.



13007469



12026712



10325585

# Triad

The Triadic color harmony groups three colors that are evenly spaced from another and form a triangle on the color wheel.



12026712



2793105



9929920

# Complementary

The Complementary color scheme is a pair of colors which are on the opposite of each other on the color wheel.



12026712



5803191

# Split Complementary

Split-complementary colors differ from the complementary color scheme. The scheme consists of three colors, the original color and two neighbors of the complement color.



6852554



12026712



40367

# Square

The Square scheme is like the rectangle color scheme, but the four colors are evenly spaced on the color wheel.



12026712



5807219



2988228



12090025

# Rectangle

The Rectangle color scheme consists of four colors that form a rectangle on the color wheel.



12026712



9016406



2988228



9013445



# Sweetspot

The Sweet Spot groups the original color and five complimentary colors.



12026712



15587527



12015756



7891809



16250871



7895160



# Same Dimension

The Same Dimension uses a secret algorithm to generate beautiful new colors.



12026712



15572314



12038744



6051667



10241536



1838336



# Inverse Universe

The Inverse Universe completely reimagines the original color for something new.



5803191



5942253



5791159



5462108



21916

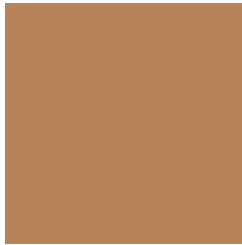


3868



# Previews

## White Background



This preview shows how the Decimal color 12026712 looks on a white background.

## Color Contrast Check

Large Text (above 18pt) WCAG AA ✓ Pass

Any Text WCAG AA × Fail

Large Text (above 18pt) WCAG AAA × Fail

Any Text WCAG AAA × Fail

# Black Background



This preview shows how the Decimal color 12026712 looks on a black background.

## Color Contrast Check

Large Text (above 18pt) WCAG AA ✓ Pass

Any Text WCAG AA ✓ Pass

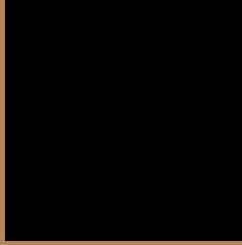
Large Text (above 18pt) WCAG AAA ✓ Pass

Any Text WCAG AAA × Fail

If you want to check with other color combinations, try the [Color Contrast Checker](#).



## Decimal 12026712 Background



This preview shows how black text looks on a background with the Decimal color 12026712.



This preview shows how white text looks on a background with the Decimal color 12026712.

# Color Blindness Simulation

Color vision deficiency is a very complex topic, and I could not describe the different causes any better than Wikipedia does, so if you want to learn more, you should check out their [article about color blindness](#).


## Dichromacy



**Original Color**  
12026712

**Protanopia**  
10194524

**Deuteranopia**  
11307095



**Tritanopia**  
12287367

# Trichromacy



**Original Color**  
12026712

**Protanomaly**  
10848859

**Deuteranomaly**  
11568727

**Tritanomaly**  
12222326

# Monochromacy



**Original Color**  
12026712

**Achromatopsia**  
9342606

**Achromatomaly**  
10324602

# CSS Examples

## Text

The CSS property to change the color of the text to Decimal 12026712 is called "color". The color property can be set on classes, ids or directly on the HTML element.

This example shows how text in the color #B78358 looks like.

```
.text, #text, p{  
    color:#B78358  
}
```

If you want to add a text shadow in that color use the text-shadow property, you can generate a text shadow directly with our [CSS Text Shadow Generator](#).

Here you see how black text with a 4 pixel #B78358 colored shadow looks like.

```
.shadow{ text-shadow: 4px 4px 2px #B78358
}
```

## Border

The CSS property to change the border of an element to Decimal 12026712 is called "border". The border property can be set on classes, ids or directly on the HTML element.

This example shows the color as border, it can be applied via the CSS property "border" or "border-color".

```
.border, #border, table{ border:4px solid
#B78358 }
```

If only the border color should be changed use the property `border-color`.

```
.border{ border-color:#B78358 }
```

If you want to add a box shadow in that color use:

Here you see how a box with a 4 pixel #B78358 colored shadow looks like.

```
.boxshadow{ -moz-box-shadow:4px 4px 4px  
4px #B78358; -webkit-box-shadow:4px 4px  
4px 4px #B78358; box-shadow:4px 4px 4px  
4px #B78358 }
```

# Background

The CSS property to change the background color of an element to Decimal 12026712 is called "background". The background property can be set on classes, ids or directly on the HTML element.

```
.background, #background, body{  
background:#B78358 }
```

If only the background color should be changed can be used:

```
.background{ background-color:#B78358 }
```

This example shows the color as background, it is applied via the CSS property "background".

To optimize and compress your CSS code, you can use our [online CSS compressor and optimizer](#) based on csstidy. If you want to create a linear or radial gradient as background or border, check our [CSS Gradient Generator](#).



Hey! You found this booklet interesting? Support Converting Colors with the new Membership Option!

The pro membership hides all ads, plus gives you double the colors in the color bucket, and more awesome pro features!

**[Learn more, Memberships starting at \\$2.50/m!](#)**

**Follow me  
on Twitter!**

@ConvertingColor