

# Converting Colors

Decimal(12027788)

Have a look what the booklet for  
Decimal(12027788) contains.

<b>Decimal(12027788)</b> .....	3
<i><b>Conversions</b></i> .....	4
<i><b>Details</b></i> .....	6
<i><b>Harmonies</b></i> .....	11
<i><b>Previews</b></i> .....	23
<i><b>Color Blindness Simulation</b></i> .....	26
<i><b>CSS Examples</b></i> .....	29

# **Color**

**Decimal(12027788)**

# Conversions

## Conversions Part 1

<b>Format</b>	<b>Color</b>
Hex	B7878C
RGB	183, 135, 140
RGB Percent	72%, 53%, 55%
CMY	0.2824, 0.4706, 0.4510
CMYK	0.00, 0.26, 0.23, 0.28
HSL	354°, 25%, 62%
HSV	354°, 26%, 72%
XYZ	32.9260, 29.2887, 28.7288
YIQ	149.9220, 27.0030, 11.7310

# Conversions

## Conversions Part 2

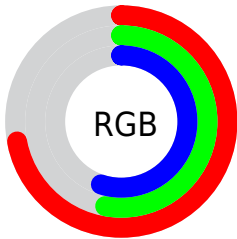
<b>Format</b>	<b>Color</b>
<a href="#">RYB</a>	<a href="#">183, 135, 140</a>
Decimal	<a href="#">12027788</a>
CIELab	<a href="#">61.04, 19.11, 4.54</a>
CIELCh	<a href="#">61, 19.642, 13.373</a>
Yxy	<a href="#">29.2887, 0.3620, 0.3221</a>
Android (android.graphics.Color)	<a href="#">4290217868 (0xFFB7878C)</a>
YUV	<a href="#">149.9220, -4.8915, 29.0094</a>
Hunter-Lab	<a href="#">54.1190, 13.8912, 6.4095</a>

# Details

The Decimal color **12027788** is a light color, and the websafe version is hex **CC9999**. A complement of this color would be **8894386**, and the grayscale version is **9868950**.

A 20% lighter version of the original color is **15777217**, and **8475994** is the 20% darker color. If you saturate the color by 10%, you get **12023164**, and if you desaturate by 10%, it is **12032412**.

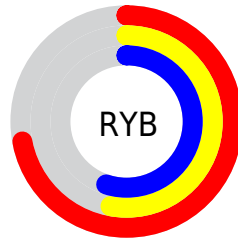
# Distribution



Red (72%)

Green (53%)

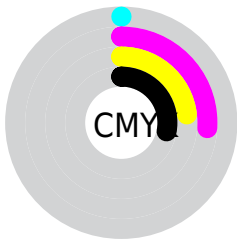
Blue (55%)



Red (72%)

Yellow (53%)

Blue (55%)

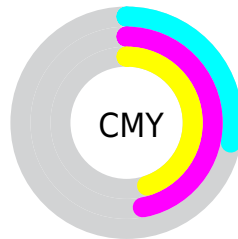


Cyan (0%)

Magenta (26%)

Yellow (23%)

Black (28%)



Cyan (28%)

Magenta (47%)

Yellow (45%)

# Brightness & Saturation Gradients

These gradients show how the Decimal color 12027788 changes by changing the brightness by 10 percent. The first figure shows a shift by +10% for each color and the second figure -10%.

Similar to the brightness gradients but the following saturation gradients show a change of the Decimal color 12027788 by changing the saturation by 10% instead.



 12027788

 12027788

16777215

 10251635

 15777217

 8475994

 16767197

 6765891

 16774650

 5121837

 3543320

 2293760

 0

 12027788

 12027788

 12023164

 12032412

 12018283

 12037293

 12013659

 12041917

 12009034

 12046542

 12004410

 12051422

 11999530

 12056046

 11994905

 12058623

 11993107

# Harmonies

## Analogous

The Analogous color harmony consists of three colors that are next to each other on the color wheel.



11569310



12027788



11831932

# Triad

The Triadic color harmony groups three colors that are evenly spaced from another and form a triangle on the color wheel.



12027788



8755578



7575732

# Complementary

The Complementary color scheme is a pair of colors which are on the opposite of each other on the color wheel.



12027788



8894386

# Split Complementary

Split-complementary colors differ from the complementary color scheme. The scheme consists of three colors, the original color and two neighbors of the complement color.



6593706



12027788



7511177

# Square

The Square scheme is like the rectangle color scheme, but the four colors are evenly spaced on the color wheel.



12027788



9999729



6659483



9015989

# Rectangle

The Rectangle color scheme consists of four colors that form a rectangle on the color wheel.



12027788



11439477



6659483



7117234



# Sweetspot

The Sweet Spot groups the original color and five complimentary colors.



12027788



15588060



11634615



7892077



16250871



7895160



# Same Dimension

The Same Dimension uses a secret algorithm to generate beautiful new colors.



12027788



15574187



12032391



6050644



10223632



1835011



# Inverse Universe

The Inverse Universe completely reimagines the original color for something new.



12027788



15574187



8889783



6050644



10223632

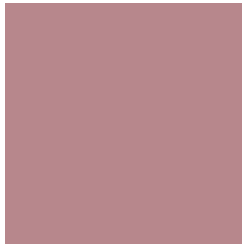


1835011



# Previews

## White Background



This preview shows how the Decimal color 12027788 looks on a white background.

## Color Contrast Check

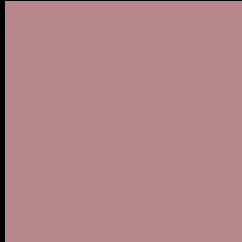
Large Text (above 18pt) WCAG AA ✓ Pass

Any Text WCAG AA ✗ Fail

Large Text (above 18pt) WCAG AAA ✗ Fail

Any Text WCAG AAA ✗ Fail

# Black Background



This preview shows how the Decimal color 12027788 looks on a black background.

## Color Contrast Check

Large Text (above 18pt) WCAG AA ✓ Pass

Any Text WCAG AA ✓ Pass

Large Text (above 18pt) WCAG AAA ✓ Pass

Any Text WCAG AAA × Fail

If you want to check with other color combinations, try the [Color Contrast Checker](#).



## Decimal 12027788 Background



This preview shows how black text looks on a background with the Decimal color 12027788.



This preview shows how white text looks on a background with the Decimal color 12027788.

# Color Blindness Simulation

Color vision deficiency is a very complex topic, and I could not describe the different causes any better than Wikipedia does, so if you want to learn more, you should check out their [article about color blindness](#).

## Dichromacy



**Original Color**  
12027788

**Protanopia**  
9868179

**Deuteranopia**  
10849931



**Tritanopia**  
12093073

# Trichromacy



**Original Color**  
12027788

**Protanomaly**  
10653584

**Deuteranomaly**  
11307915

**Tritanomaly**  
12093071

# Monochromacy



**Original Color**  
12027788

**Achromatopsia**  
9868950

**Achromatomaly**  
10654098

# CSS Examples

## Text

The CSS property to change the color of the text to Decimal 12027788 is called "color". The color property can be set on classes, ids or directly on the HTML element.

This example shows how text in the color #B7878C looks like.

```
.text, #text, p{  
    color:#B7878C  
}
```

If you want to add a text shadow in that color use the text-shadow property, you can generate a text shadow directly with our [CSS Text Shadow Generator](#).

Here you see how black text with a 4 pixel #B7878C colored shadow looks like.

```
.shadow{ text-shadow: 4px 4px 2px #B7878C
}
```

## Border

The CSS property to change the border of an element to Decimal 12027788 is called "border". The border property can be set on classes, ids or directly on the HTML element.

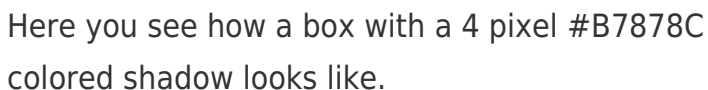
This example shows the color as border, it can be applied via the CSS property "border" or "border-color".

```
.border, #border, table{ border:4px solid
#B7878C }
```

If only the border color should be changed use the property `border-color`.

```
.border{ border-color:#B7878C }
```

If you want to add a box shadow in that color use:



Here you see how a box with a 4 pixel #B7878C colored shadow looks like.

```
.boxshadow{ -moz-box-shadow:4px 4px 4px  
4px #B7878C; -webkit-box-shadow:4px 4px  
4px 4px #B7878C; box-shadow:4px 4px 4px  
4px #B7878C }
```

# Background

The CSS property to change the background color of an element to Decimal 12027788 is called "background". The background property can be set on classes, ids or directly on the HTML element.

```
.background, #background, body{  
background:#B7878C }
```

If only the background color should be changed can be used:

```
.background{ background-color:#B7878C }
```

This example shows the color as background, it is applied via the CSS property "background".

To optimize and compress your CSS code, you can use our [online CSS compressor and optimizer](#) based on csstidy. If you want to create a linear or radial gradient as background or border, check our [CSS Gradient Generator](#).



Hey! You found this booklet interesting? Support Converting Colors with the new Membership Option!

The pro membership hides all ads, plus gives you double the colors in the color bucket, and more awesome pro features!

**[Learn more, Memberships starting at \\$2.50/m!](#)**

**Follow me  
on Twitter!**

@ConvertingColor