

Converting Colors

Decimal(12028296)

Have a look what the booklet for
Decimal(12028296) contains.

Decimal(12028296)	3
<i>Conversions</i>	4
<i>Details</i>	6
<i>Harmonies</i>	11
<i>Previews</i>	23
<i>Color Blindness Simulation</i>	26
<i>CSS Examples</i>	29

Color

Decimal(12028296)

Conversions

Conversions Part 1

Format	Color
Hex	B78988
RGB	183, 137, 136
RGB Percent	72%, 54%, 53%
CMY	0.2824, 0.4627, 0.4667
CMYK	0.00, 0.25, 0.26, 0.28
HSL	1°, 25%, 63%
HSV	1°, 26%, 72%
XYZ	32.9180, 29.7362, 27.2972
YIQ	150.6400, 27.7370, 9.4410

Conversions

Conversions Part 2

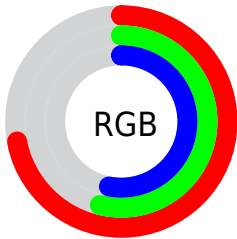
Format	Color
RYB	183, 137, 136
Decimal	12028296
CIELab	61.43, 17.40, 7.38
CIELCh	61, 18.900, 22.994
Yxy	29.7362, 0.3660, 0.3306
Android (android.graphics.Color)	4290218376 (0xFFB78988)
YUV	150.6400, -7.2175, 28.3797
Hunter-Lab	54.5309, 12.3240, 8.4920

Details

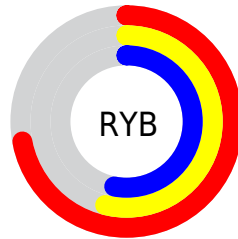
The Decimal color **12028296** is a light color, and the websafe version is hex **CC9999**. A complement of this color would be **8959671**, and the grayscale version is **9934743**.

A 20% lighter version of the original color is **15777725**, and **8476502** is the 20% darker color. If you saturate the color by 10%, you get **12023670**, and if you desaturate by 10%, it is **12032922**.

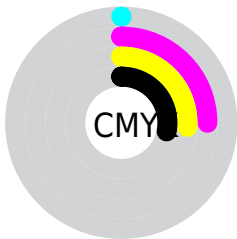
Distribution



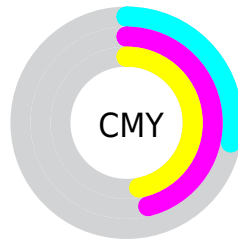
- Red (72%)
- Green (54%)
- Blue (53%)



- Red (72%)
- Yellow (54%)
- Blue (53%)



- Cyan (0%)
- Magenta (25%)
- Yellow (26%)
- Black (28%)



- Cyan (28%)
- Magenta (46%)
- Yellow (47%)

Brightness & Saturation Gradients

These gradients show how the Decimal color 12028296 changes by changing the brightness by 10 percent. The first figure shows a shift by +10% for each color and the second figure -10%.

Similar to the brightness gradients but the following saturation gradients show a change of the Decimal color 12028296 by changing the saturation by 10% instead.

 12028296

 12028296

16777215

 10252143

 15777725

 8476502

 16767705

 6766399

 16775157

 5122345

 3544085

 2228224

 0

 12028296

 12028296

 12023670

 12032922

 12019043

 12037549

 12014417

 12042175

 12009791

 12046801

 12005165

 12051427

 12000794

 12055798

 11996168

 12058623

 11994112

Harmonies

Analogous

The Analogous color harmony consists of three colors that are next to each other on the color wheel.



11766169



12028296



11701626

Triad

The Triadic color harmony groups three colors that are evenly spaced from another and form a triangle on the color wheel.



12028296



8428416



8165301

Complementary

The Complementary color scheme is a pair of colors which are on the opposite of each other on the color wheel.



12028296



8959671

Split Complementary

Split-complementary colors differ from the complementary color scheme. The scheme consists of three colors, the original color and two neighbors of the complement color.



7052206



12028296



7315088

Square

The Square scheme is like the rectangle color scheme, but the four colors are evenly spaced on the color wheel.



12028296



9672565



6725281



9605555

Rectangle

The Rectangle color scheme consists of four colors that form a rectangle on the color wheel.



12028296



11178101



6725281



7707060

Sweetspot

The Sweet Spot groups the original color and five complimentary colors.



12028296



15588314



12028086



7892076



16250871



7895160

Same Dimension

The Same Dimension uses a secret algorithm to generate beautiful new colors.



12028296



15574436



12034184



6050643



10224384



1835264

Inverse Universe

The Inverse Universe completely reimagines the original color for something new.



8959671



10808557



8953783



5463132



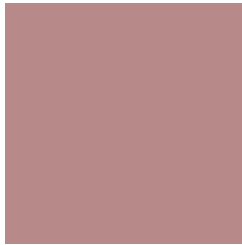
39068



6940

Previews

White Background



This preview shows how the Decimal color 12028296 looks on a white background.

Color Contrast Check

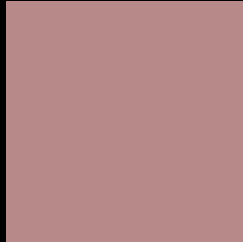
Large Text (above 18pt) WCAG AA ✓ Pass

Any Text WCAG AA × Fail

Large Text (above 18pt) WCAG AAA × Fail

Any Text WCAG AAA × Fail

Black Background



This preview shows how the Decimal color 12028296 looks on a black background.

Color Contrast Check

Large Text (above 18pt) WCAG AA ✓ Pass

Any Text WCAG AA ✓ Pass

Large Text (above 18pt) WCAG AAA ✓ Pass

Any Text WCAG AAA × Fail

If you want to check with other color combinations, try the [Color Contrast Checker](#).

Decimal 12028296 Background



This preview shows how black text looks on a background with the Decimal color 12028296.




This preview shows how white text looks on a background with the Decimal color 12028296.

Color Blindness Simulation

Color vision deficiency is a very complex topic, and I could not describe the different causes any better than Wikipedia does, so if you want to learn more, you should check out their [article about color blindness](#).

Dichromacy





Tritanopia
12093330

Trichromacy



Original Color
12028296

Protanomaly
10784908

Deuteranomaly
11373959

Tritanomaly
12093582

Monochromacy



Original Color
12028296

Achromatopsia
9934743

Achromatomaly
10719890

CSS Examples

Text

The CSS property to change the color of the text to Decimal 12028296 is called "color". The color property can be set on classes, ids or directly on the HTML element.

This example shows how text in the color #B78988 looks like.

```
.text, #text, p{  
    color:#B78988  
}
```

If you want to add a text shadow in that color use the text-shadow property, you can generate a text shadow directly with our [CSS Text Shadow Generator](#).

Here you see how black text with a 4 pixel #B78988 colored shadow looks like.

```
.shadow{ text-shadow: 4px 4px 2px #B78988
}
```

Border

The CSS property to change the border of an element to Decimal 12028296 is called "border". The border property can be set on classes, ids or directly on the HTML element.

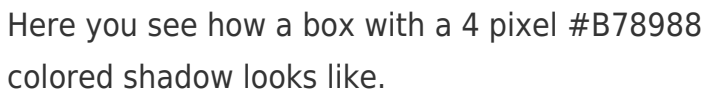
This example shows the color as border, it can be applied via the CSS property "border" or "border-color".

```
.border, #border, table{ border:4px solid
#B78988 }
```

If only the border color should be changed use the property `border-color`.

```
.border{ border-color:#B78988 }
```

If you want to add a box shadow in that color use:



Here you see how a box with a 4 pixel #B78988 colored shadow looks like.

```
.boxshadow{ -moz-box-shadow:4px 4px 4px  
4px #B78988; -webkit-box-shadow:4px 4px  
4px 4px #B78988; box-shadow:4px 4px 4px  
4px #B78988 }
```

Background

The CSS property to change the background color of an element to Decimal 12028296 is called "background". The background property can be set on classes, ids or directly on the HTML element.

```
.background, #background, body{  
background:#B78988 }
```

If only the background color should be changed can be used:

```
.background{ background-color:#B78988 }
```

This example shows the color as background, it is applied via the CSS property "background".

To optimize and compress your CSS code, you can use our [online CSS compressor and optimizer](#) based on csstidy. If you want to create a linear or radial gradient as background or border, check our [CSS Gradient Generator](#).

Hey! You found this booklet interesting? Support Converting Colors with the new Membership Option!

The pro membership hides all ads, plus gives you double the colors in the color bucket, and more awesome pro features!

[Learn more, Memberships starting at \\$2.50/m!](#)

**Follow me
on Twitter!**

@ConvertingColor