

Converting Colors

Decimal(12030337)

Have a look what the booklet for
Decimal(12030337) contains.

Decimal(12030337)	3
<i>Conversions</i>	4
<i>Details</i>	6
<i>Harmonies</i>	11
<i>Previews</i>	23
<i>Color Blindness Simulation</i>	26
<i>CSS Examples</i>	29

Color

Decimal(12030337)

Conversions

Conversions Part 1

Format	Color
Hex	B79181
RGB	183, 145, 129
RGB Percent	72%, 57%, 51%
CMY	0.2824, 0.4314, 0.4941
CMYK	0.00, 0.21, 0.30, 0.28
HSL	18°, 27%, 61%
HSV	18°, 30%, 72%
XYZ	33.6163, 31.9031, 25.1550
YIQ	154.5380, 27.7840, 3.0800

Conversions

Conversions Part 2

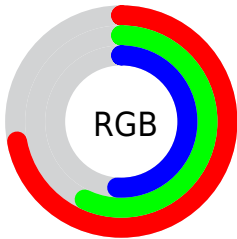
Format	Color
RYB	183, 152, 129
Decimal	12030337
CIELab	63.26, 11.95, 13.94
CIELCh	63, 18.358, 49.402
Yxy	31.9031, 0.3707, 0.3518
Android (android.graphics.Color)	4290220417 (0xFFB79181)
YUV	154.5380, -12.5902, 24.9612
Hunter-Lab	56.4828, 7.3911, 13.1327

Details

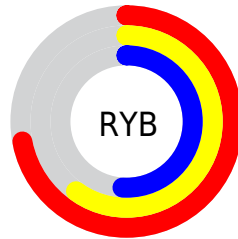
The Decimal color **12030337** is a light color, and the websafe version is hex **CC9999**. A complement of this color would be **8497079**, and the grayscale version is **10197915**.

A 20% lighter version of the original color is **15779766**, and **8478288** is the 20% darker color. If you saturate the color by 10%, you get **12026991**, and if you desaturate by 10%, it is **12033683**.

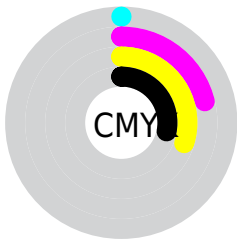
Distribution



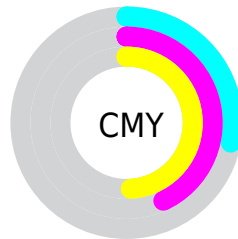
- Red (72%)
- Green (57%)
- Blue (51%)



- Red (72%)
- Yellow (60%)
- Blue (51%)



- Cyan (0%)
- Magenta (21%)
- Yellow (30%)
- Black (28%)



- Cyan (28%)
- Magenta (43%)
- Yellow (49%)

Brightness & Saturation Gradients

These gradients show how the Decimal color 12030337 changes by changing the brightness by 10 percent. The first figure shows a shift by +10% for each color and the second figure -10%.

Similar to the brightness gradients but the following saturation gradients show a change of the Decimal color 12030337 by changing the saturation by 10% instead.

 12030337

 12030337

16777215

 10254184

 15779766

 8478288


 16770001

 6768441

 16777198

 5124131

 3545870

 2163200

 0

 12030337

 12030337

 12026991

 12033683

 12023644

 12037030

 12020298

 12040376

 12016952

 12043722

 12013862

 12046812

 12010515

 12050159

 12007169

 12053503

 12006912

 12056831

 12058623

Harmonies

Analogous

The Analogous color harmony consists of three colors that are next to each other on the color wheel.



12291727



12030337



11245177

Triad

The Triadic color harmony groups three colors that are evenly spaced from another and form a triangle on the color wheel.



12030337



7840403



9738168

Complementary

The Complementary color scheme is a pair of colors which are on the opposite of each other on the color wheel.



12030337



8497079

Split Complementary

Split-complementary colors differ from the complementary color scheme. The scheme consists of three colors, the original color and two neighbors of the complement color.



8363193



12030337



7185059

Square

The Square scheme is like the rectangle color scheme, but the four colors are evenly spaced on the color wheel.



12030337



8953988



7381169



11113135

Rectangle

The Rectangle color scheme consists of four colors that form a rectangle on the color wheel.



12030337



10525305



7381169



9279929

Sweetspot

The Sweet Spot groups the original color and five complimentary colors.



12030337



15589080



12026280



7892843



16250871



7895160

Same Dimension

The Same Dimension uses a secret algorithm to generate beautiful new colors.



12030337



15578010



12036993



6051155



10235392



1837056

Inverse Universe

The Inverse Universe completely reimagines the original color for something new.



8497079



10147309



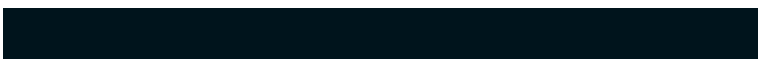
8490423



5462364



28060



5148

Previews

White Background



This preview shows how the Decimal color 12030337 looks on a white background.

Color Contrast Check

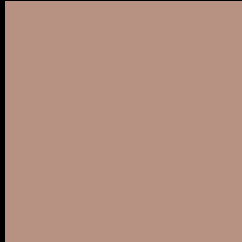
Large Text (above 18pt) WCAG AA × Fail

Any Text WCAG AA × Fail

Large Text (above 18pt) WCAG AAA × Fail

Any Text WCAG AAA × Fail

Black Background



This preview shows how the Decimal color 12030337 looks on a black background.

Color Contrast Check

Large Text (above 18pt) WCAG AA ✓ Pass

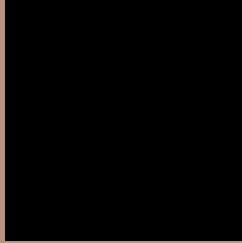
Any Text WCAG AA ✓ Pass

Large Text (above 18pt) WCAG AAA ✓ Pass

Any Text WCAG AAA ✓ Pass

If you want to check with other color combinations, try the [Color Contrast Checker](#).

Decimal 12030337 Background



This preview shows how black text looks on a background with the Decimal color 12030337.



This preview shows how white text looks on a background with the Decimal color 12030337.

Color Blindness Simulation

Color vision deficiency is a very complex topic, and I could not describe the different causes any better than Wikipedia does, so if you want to learn more, you should check out their [article about color blindness](#).

Dichromacy





Tritanopia
12226201

Trichromacy



Original Color
12030337

Protanomaly
11114116

Deuteranomaly
11768449

Tritanomaly
12160912

Monochromacy



Original Color
12030337

Achromatopsia
10197915

Achromatomaly
10852242

CSS Examples

Text

The CSS property to change the color of the text to Decimal 12030337 is called "color". The color property can be set on classes, ids or directly on the HTML element.

This example shows how text in the color #B79181 looks like.

```
.text, #text, p{  
    color:#B79181  
}
```

If you want to add a text shadow in that color use the text-shadow property, you can generate a text shadow directly with our [CSS Text Shadow Generator](#).

Here you see how black text with a 4 pixel #B79181 colored shadow looks like.

```
.shadow{ text-shadow: 4px 4px 2px #B79181
}
```

Border

The CSS property to change the border of an element to Decimal 12030337 is called "border". The border property can be set on classes, ids or directly on the HTML element.

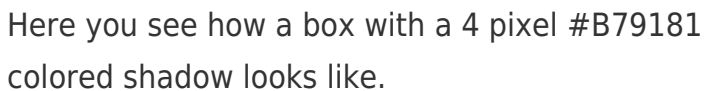
This example shows the color as border, it can be applied via the CSS property "border" or "border-color".

```
.border, #border, table{ border:4px solid
#B79181 }
```

If only the border color should be changed use the property `border-color`.

```
.border{ border-color:#B79181 }
```

If you want to add a box shadow in that color use:



Here you see how a box with a 4 pixel #B79181 colored shadow looks like.

```
.boxshadow{ -moz-box-shadow:4px 4px 4px  
4px #B79181; -webkit-box-shadow:4px 4px  
4px 4px #B79181; box-shadow:4px 4px 4px  
4px #B79181 }
```

Background

The CSS property to change the background color of an element to Decimal 12030337 is called "background". The background property can be set on classes, ids or directly on the HTML element.

```
.background, #background, body{  
background:#B79181 }
```

If only the background color should be changed can be used:

```
.background{ background-color:#B79181 }
```

This example shows the color as background, it is applied via the CSS property "background".

To optimize and compress your CSS code, you can use our [online CSS compressor and optimizer](#) based on csstidy. If you want to create a linear or radial gradient as background or border, check our [CSS Gradient Generator](#).

Hey! You found this booklet interesting? Support Converting Colors with the new Membership Option!

The pro membership hides all ads, plus gives you double the colors in the color bucket, and more awesome pro features!

[Learn more, Memberships starting at \\$2.50/m!](#)

**Follow me
on Twitter!**

@ConvertingColor