

Converting Colors

Decimal(12030845)

Have a look what the booklet for
Decimal(12030845) contains.

Decimal(12030845)	3
<i>Conversions</i>	4
<i>Details</i>	6
<i>Harmonies</i>	11
<i>Previews</i>	23
<i>Color Blindness Simulation</i>	26
<i>CSS Examples</i>	29

Color

Decimal(12030845)

Conversions

Conversions Part 1

Format	Color
Hex	B7937D
RGB	183, 147, 125
RGB Percent	72%, 58%, 49%
CMY	0.2824, 0.4235, 0.5098
CMYK	0.00, 0.20, 0.32, 0.28
HSL	23°, 29%, 60%
HSV	23°, 32%, 72%
XYZ	33.6638, 32.4154, 23.8846
YIQ	155.2560, 28.5180, 0.7900

Conversions

Conversions Part 2

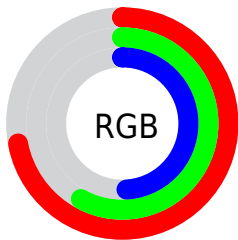
Format	Color
RYB	183, 160, 125
Decimal	12030845
CIELab	63.68, 10.29, 16.77
CIElCh	64, 19.676, 58.455
Yxy	32.4154, 0.3742, 0.3603
Android (android.graphics.Color)	4290220925 (0xFFB7937D)
YUV	155.2560, -14.9162, 24.3315
Hunter-Lab	56.9345, 5.9068, 14.9815

Details

The Decimal color **12030845** is a light color, and the websafe version is hex **CC9999**. A complement of this color would be **8233399**, and the grayscale version is **10197915**.

A 20% lighter version of the original color is **15780274**, and **8478796** is the 20% darker color. If you saturate the color by 10%, you get **12028011**, and if you desaturate by 10%, it is **12033679**.

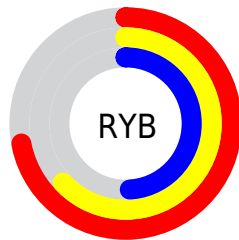
Distribution



Red (72%)

Green (58%)

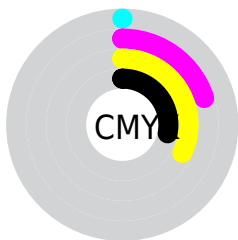
Blue (49%)



Red (72%)

Yellow (63%)

Blue (49%)

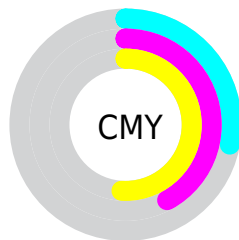


Cyan (0%)

Magenta (20%)

Yellow (32%)

Black (28%)



Cyan (28%)

Magenta (42%)

Yellow (51%)

Brightness & Saturation Gradients

These gradients show how the Decimal color 12030845 changes by changing the brightness by 10 percent. The first figure shows a shift by +10% for each color and the second figure -10%.

Similar to the brightness gradients but the following saturation gradients show a change of the Decimal color 12030845 by changing the saturation by 10% instead.

 12030845

 12030845

16777215

 10254692

 15780274

 8478796

 16770509

 6768949

 16777193

 5124640

 3546377

 2098432

 0

 12030845

 12030845

 12028011

 12033679

 12024920

 12036770

 12022086

 12039604

 12019252

 12042438

 12016161

 12045529

 12013327

 12048363

 12010752

 12051453

 12054271

 12057087

Harmonies

Analogous

The Analogous color harmony consists of three colors that are next to each other on the color wheel.



12488586



12030845



11049335

Triad

The Triadic color harmony groups three colors that are evenly spaced from another and form a triangle on the color wheel.



12030845



7447705



10262201

Complementary

The Complementary color scheme is a pair of colors which are on the opposite of each other on the color wheel.



12030845



8233399

Split Complementary

Split-complementary colors differ from the complementary color scheme. The scheme consists of three colors, the original color and two neighbors of the complement color.



8690877



12030845



6923434

Square

The Square scheme is like the rectangle color scheme, but the four colors are evenly spaced on the color wheel.



12030845



8561287



7446968



11571629

Rectangle

The Rectangle color scheme consists of four colors that form a rectangle on the color wheel.



12030845



10263929



7446968



9738427

Sweetspot

The Sweet Spot groups the original color and five complimentary colors.



12030845



15589077



12025250



7892841



16250871



7895160

Same Dimension

The Same Dimension uses a secret algorithm to generate beautiful new colors.



12030845



15578515



12038013



6051411



10238720



1837824

Inverse Universe

The Inverse Universe completely reimagines the original color for something new.



8233399



9685997



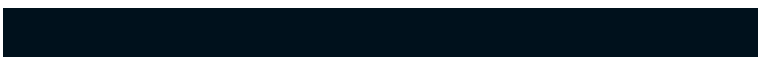
8226231



5462108



24988



4380

Previews

White Background



This preview shows how the Decimal color 12030845 looks on a white background.

Color Contrast Check

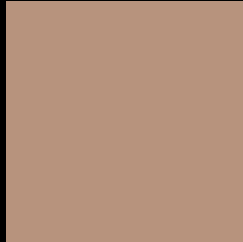
Large Text (above 18pt) WCAG AA × Fail

Any Text WCAG AA × Fail

Large Text (above 18pt) WCAG AAA × Fail

Any Text WCAG AAA × Fail

Black Background



This preview shows how the Decimal color 12030845 looks on a black background.

Color Contrast Check

Large Text (above 18pt) WCAG AA ✓ Pass

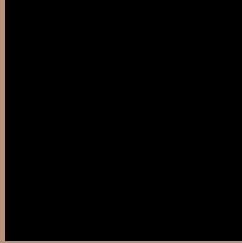
Any Text WCAG AA ✓ Pass

Large Text (above 18pt) WCAG AAA ✓ Pass

Any Text WCAG AAA ✓ Pass

If you want to check with other color combinations, try the [Color Contrast Checker](#).

Decimal 12030845 Background



This preview shows how black text looks on a background with the Decimal color 12030845.



This preview shows how white text looks on a background with the Decimal color 12030845.

Color Blindness Simulation

Color vision deficiency is a very complex topic, and I could not describe the different causes any better than Wikipedia does, so if you want to learn more, you should check out their [article about color blindness](#).

Dichromacy





Tritanopia
12226458

Trichromacy



Original Color

12030845

Protanomaly

11179903

Deuteranomaly

11900029

Tritanomaly

12161167

Monochromacy



Original Color

12030845

Achromatopsia

10197915

Achromatomaly

10852496

CSS Examples

Text

The CSS property to change the color of the text to Decimal 12030845 is called "color". The color property can be set on classes, ids or directly on the HTML element.

This example shows how text in the color #B7937D looks like.

```
.text, #text, p{  
    color:#B7937D  
}
```

If you want to add a text shadow in that color use the text-shadow property, you can generate a text shadow directly with our [CSS Text Shadow Generator](#).

Here you see how black text with a 4 pixel #B7937D colored shadow looks like.

```
.shadow{ text-shadow: 4px 4px 2px #B7937D
}
```

Border

The CSS property to change the border of an element to Decimal 12030845 is called "border". The border property can be set on classes, ids or directly on the HTML element.

This example shows the color as border, it can be applied via the CSS property "border" or "border-color".

```
.border, #border, table{ border:4px solid
#B7937D }
```

If only the border color should be changed use the property border-color.

```
.border{ border-color:#B7937D }
```

If you want to add a box shadow in that color use:

Here you see how a box with a 4 pixel #B7937D colored shadow looks like.

```
.boxshadow{ -moz-box-shadow:4px 4px 4px  
4px #B7937D; -webkit-box-shadow:4px 4px  
4px 4px #B7937D; box-shadow:4px 4px 4px  
4px #B7937D }
```

Background

The CSS property to change the background color of an element to Decimal 12030845 is called "background". The background property can be set on classes, ids or directly on the HTML element.

```
.background, #background, body{  
background:#B7937D }
```

If only the background color should be changed can be used:

```
.background{ background-color:#B7937D }
```

This example shows the color as background, it is applied via the CSS property "background".

To optimize and compress your CSS code, you can use our [online CSS compressor and optimizer](#) based on csstidy. If you want to create a linear or radial gradient as background or border, check our [CSS Gradient Generator](#).

Hey! You found this booklet interesting? Support Converting Colors with the new Membership Option!

The pro membership hides all ads, plus gives you double the colors in the color bucket, and more awesome pro features!

[Learn more, Memberships starting at \\$2.50/m!](#)

**Follow me
on Twitter!**

@ConvertingColor