

# Converting Colors

Decimal(12031344)

Have a look what the booklet for  
Decimal(12031344) contains.

<b>Decimal(12031344)</b> .....	3
<i><b>Conversions</b></i> .....	4
<i><b>Details</b></i> .....	6
<i><b>Harmonies</b></i> .....	11
<i><b>Previews</b></i> .....	23
<i><b>Color Blindness Simulation</b></i> .....	26
<i><b>CSS Examples</b></i> .....	29

# **Color**

**Decimal(12031344)**

# Conversions

## Conversions Part 1

Format	Color
Hex	B79570
RGB	183, 149, 112
RGB Percent	72%, 58%, 44%
CMY	0.2824, 0.4157, 0.5608
CMYK	0.00, 0.19, 0.39, 0.28
HSL	31°, 33%, 58%
HSV	31°, 39%, 72%
XYZ	33.2005, 32.7320, 19.8973
YIQ	154.9480, 32.1410, -4.2990

# Conversions

## Conversions Part 2

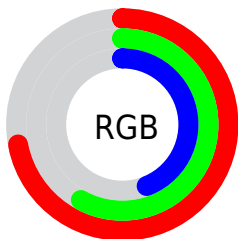
<b>Format</b>	<b>Color</b>
<a href="#">RYB</a>	<a href="#">177, 183, 112</a>
Decimal	<a href="#">12031344</a>
CIELab	<a href="#">63.94, 7.55, 24.34</a>
CIELCh	<a href="#">64, 25.483, 72.769</a>
Yxy	<a href="#">32.7320, 0.3868, 0.3814</a>
Android (android.graphics.Color)	<a href="#">4290221424 (0xFFB79570)</a>
YUV	<a href="#">154.9480, -21.1734, 24.6016</a>
Hunter-Lab	<a href="#">57.2119, 3.4641, 19.4283</a>

# Details

The Decimal color **12031344** is a light color, and the websafe version is hex **CC9966**. A complement of this color would be **7377591**, and the grayscale version is **10197915**.

A 20% lighter version of the original color is **15780772**, and **8479296** is the 20% darker color. If you saturate the color by 10%, you get **12029022**, and if you desaturate by 10%, it is **12033666**.

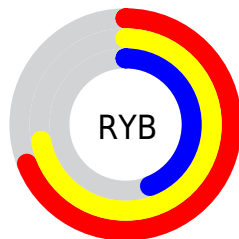
# Distribution



Red (72%)

Green (58%)

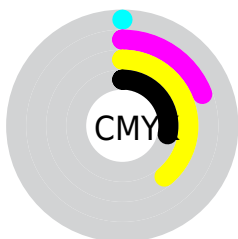
Blue (44%)



Red (69%)

Yellow (72%)

Blue (44%)

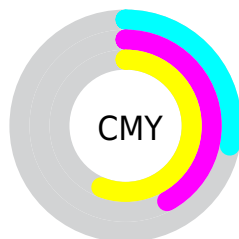


Cyan (0%)

Magenta (19%)

Yellow (39%)

Black (28%)



Cyan (28%)

Magenta (42%)

Yellow (56%)

# Brightness & Saturation Gradients

These gradients show how the Decimal color 12031344 changes by changing the brightness by 10 percent. The first figure shows a shift by +10% for each color and the second figure -10%.

Similar to the brightness gradients but the following saturation gradients show a change of the Decimal color 12031344 by changing the saturation by 10% instead.



 12031344

 12031344

16777215

 10189655

 15780772

 8479296

 16771007

 6703913

 16777179

 5059604

 16777208

 3546880

 1968128

 0

 12031344

 12031344

 12029022

 12033666

12026699

12035989

12024633

12038055

12022311

12040377

12019989

12042700

12017666

12045022

12017408

12047088

12049407

12051711

# Harmonies

## Analogous

The Analogous color harmony consists of three colors that are next to each other on the color wheel.



12947069



12031344



10591598

# Triad

The Triadic color harmony groups three colors that are evenly spaced from another and form a triangle on the color wheel.



12031344



5941412



11178684

# Complementary

The Complementary color scheme is a pair of colors which are on the opposite of each other on the color wheel.



12031344



7377591

# Split Complementary

Split-complementary colors differ from the complementary color scheme. The scheme consists of three colors, the original color and two neighbors of the complement color.



9214663



12031344



5744313

# Square

The Square scheme is like the rectangle color scheme, but the four colors are evenly spaced on the color wheel.



12031344



7251853



7119302



12618921

# Rectangle

The Rectangle color scheme consists of four colors that form a rectangle on the color wheel.



12031344



9544052



7119302



10589377



# Sweetspot

The Sweet Spot groups the original color and five complimentary colors.



12031344



15589585



12021906



7893095



16250871



7895160



# Same Dimension

The Same Dimension uses a secret algorithm to generate beautiful new colors.



12031344



15579262



11974512



6051667



10244352



1838848



# Inverse Universe

The Inverse Universe completely reimagines the original color for something new.



7377591



8303597



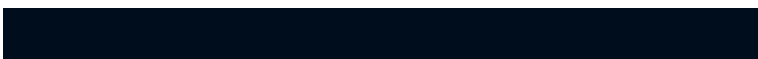
7434423



5461852



19100

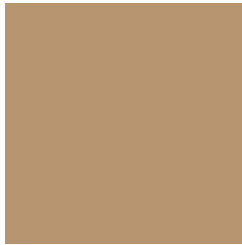


3356



# Previews

## White Background



This preview shows how the Decimal color 12031344 looks on a white background.

## Color Contrast Check

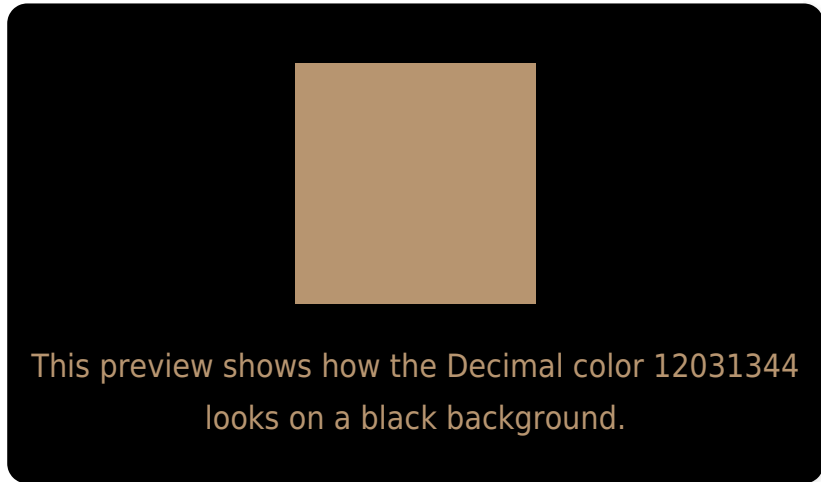
Large Text (above 18pt) WCAG AA × Fail

Any Text WCAG AA × Fail

Large Text (above 18pt) WCAG AAA × Fail

Any Text WCAG AAA × Fail

# Black Background



## Color Contrast Check

Large Text (above 18pt) WCAG AA ✓ Pass

Any Text WCAG AA ✓ Pass

Large Text (above 18pt) WCAG AAA ✓ Pass

Any Text WCAG AAA ✓ Pass

If you want to check with other color combinations, try the [Color Contrast Checker](#).



## Decimal 12031344 Background



This preview shows how black text looks on a background with the Decimal color 12031344.



This preview shows how white text looks on a background with the Decimal color 12031344.

# Color Blindness Simulation

Color vision deficiency is a very complex topic, and I could not describe the different causes any better than Wikipedia does, so if you want to learn more, you should check out their [article about color blindness](#).


## Dichromacy



**Original Color**  
12031344

**Protanopia**  
10918771

**Deuteranopia**  
12096880



**Tritanopia**  
12291994

# Trichromacy



**Original Color**  
12031344

**Protanomaly**  
11311474

**Deuteranomaly**  
12096880

**Tritanomaly**  
12226955

# Monochromacy



**Original Color**  
12031344

**Achromatopsia**  
10197915

**Achromatomaly**  
10852747

# CSS Examples

## Text

The CSS property to change the color of the text to Decimal 12031344 is called "color". The color property can be set on classes, ids or directly on the HTML element.

This example shows how text in the color #B79570 looks like.

```
.text, #text, p{  
    color:#B79570  
}
```

If you want to add a text shadow in that color use the text-shadow property, you can generate a text shadow directly with our [CSS Text Shadow Generator](#).

Here you see how black text with a 4 pixel #B79570 colored shadow looks like.

```
.shadow{ text-shadow: 4px 4px 2px #B79570
}
```

## Border

The CSS property to change the border of an element to Decimal 12031344 is called "border". The border property can be set on classes, ids or directly on the HTML element.

This example shows the color as border, it can be applied via the CSS property "border" or "border-color".

```
.border, #border, table{ border:4px solid
#B79570 }
```

If only the border color should be changed use the property `border-color`.

```
.border{ border-color:#B79570 }
```

If you want to add a box shadow in that color use:

Here you see how a box with a 4 pixel #B79570 colored shadow looks like.

```
.boxshadow{ -moz-box-shadow:4px 4px 4px  
4px #B79570; -webkit-box-shadow:4px 4px  
4px 4px #B79570; box-shadow:4px 4px 4px  
4px #B79570 }
```

# Background

The CSS property to change the background color of an element to Decimal 12031344 is called "background". The background property can be set on classes, ids or directly on the HTML element.

```
.background, #background, body{  
background:#B79570 }
```

If only the background color should be changed can be used:

```
.background{ background-color:#B79570 }
```

This example shows the color as background, it is applied via the CSS property "background".

To optimize and compress your CSS code, you can use our [online CSS compressor and optimizer](#) based on csstidy. If you want to create a linear or radial gradient as background or border, check our [CSS Gradient Generator](#).



Hey! You found this booklet interesting? Support Converting Colors with the new Membership Option!

The pro membership hides all ads, plus gives you double the colors in the color bucket, and more awesome pro features!

**[Learn more, Memberships starting at \\$2.50/m!](#)**

**Follow me  
on Twitter!**

@ConvertingColor