

Converting Colors

Decimal(12031345)

Have a look what the booklet for
Decimal(12031345) contains.

Decimal(12031345)	3
<i>Conversions</i>	4
<i>Details</i>	6
<i>Harmonies</i>	11
<i>Previews</i>	23
<i>Color Blindness Simulation</i>	26
<i>CSS Examples</i>	29

Color

Decimal(12031345)

Conversions

Conversions Part 1

Format	Color
Hex	B79571
RGB	183, 149, 113
RGB Percent	72%, 58%, 44%
CMY	0.2824, 0.4157, 0.5569
CMYK	0.00, 0.19, 0.38, 0.28
HSL	31°, 33%, 58%
HSV	31°, 38%, 72%
XYZ	33.2565, 32.7544, 20.1922
YIQ	155.0620, 31.8200, -3.9880

Conversions

Conversions Part 2

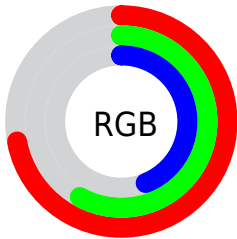
Format	Color
RYB	179, 183, 113
Decimal	12031345
CIELab	63.96, 7.67, 23.81
CIElCh	64, 25.016, 72.151
Yxy	32.7544, 0.3858, 0.3800
Android (android.graphics.Color)	4290221425 (0xFFB79571)
YUV	155.0620, -20.7366, 24.5016
Hunter-Lab	57.2315, 3.5691, 19.1435

Details

The Decimal color **12031345** is a light color, and the websafe version is hex **CC9966**. A complement of this color would be **7443383**, and the grayscale version is **10197915**.

A 20% lighter version of the original color is **15780773**, and **8479297** is the 20% darker color. If you saturate the color by 10%, you get **12029023**, and if you desaturate by 10%, it is **12033667**.

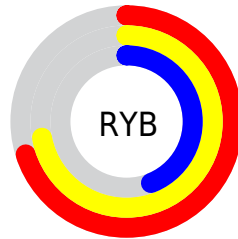
Distribution



Red (72%)

Green (58%)

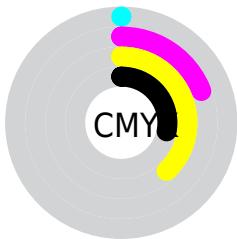
Blue (44%)



Red (70%)

Yellow (72%)

Blue (44%)

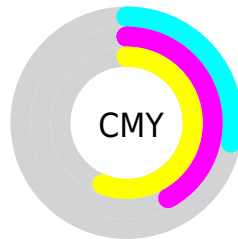


Cyan (0%)

Magenta (19%)

Yellow (38%)

Black (28%)



Cyan (28%)

Magenta (42%)

Yellow (56%)

Brightness & Saturation Gradients


These gradients show how the Decimal color 12031345 changes by changing the brightness by 10 percent. The first figure shows a shift by +10% for each color and the second figure -10%.

Similar to the brightness gradients but the following saturation gradients show a change of the Decimal color 12031345 by changing the saturation by 10% instead.

 12031345

 12031345

16777215

 10189656

 15780773

 8479297

 16771008

 6703914

 16777180

 5059605

 16777209

 3546880

 1968128

 0

 12031345

 12031345

 12029023

 12033667

12026700

12035990

12024378

12038312

12022056

12040634

12019989

12042701

12017667

12045023

12017152

12047345

12049663

12051967

Harmonies

Analogous

The Analogous color harmony consists of three colors that are next to each other on the color wheel.



12947070



12031345



10656879

Triad

The Triadic color harmony groups three colors that are evenly spaced from another and form a triangle on the color wheel.



12031345



6072484



11178684

Complementary

The Complementary color scheme is a pair of colors which are on the opposite of each other on the color wheel.



12031345



7443383

Split Complementary

Split-complementary colors differ from the complementary color scheme. The scheme consists of three colors, the original color and two neighbors of the complement color.



9214662



12031345



5875384

Square

The Square scheme is like the rectangle color scheme, but the four colors are evenly spaced on the color wheel.



12031345



7382669



7184837



12553385

Rectangle

The Rectangle color scheme consists of four colors that form a rectangle on the color wheel.



12031345



9544053



7184837



10524097

Sweetspot

The Sweet Spot groups the original color and five complimentary colors.



12031345



15589587



12022164



7893096



16250871



7895160

Same Dimension

The Same Dimension uses a secret algorithm to generate beautiful new colors.



12031345



15579264



12040049



6051667



10244096



1838592

Inverse Universe

The Inverse Universe completely reimagines the original color for something new.



7443383



8435181



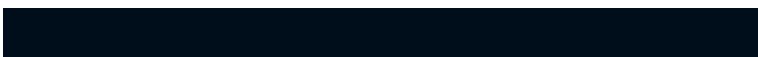
7434679



5461852



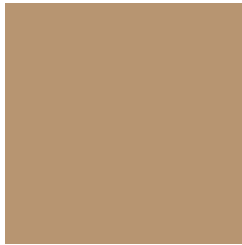
19612



3612

Previews

White Background



This preview shows how the Decimal color 12031345 looks on a white background.

Color Contrast Check

Large Text (above 18pt) WCAG AA × Fail

Any Text WCAG AA × Fail

Large Text (above 18pt) WCAG AAA × Fail

Any Text WCAG AAA × Fail

Black Background



This preview shows how the Decimal color 12031345 looks on a black background.

Color Contrast Check

Large Text (above 18pt) WCAG AA ✓ Pass

Any Text WCAG AA ✓ Pass

Large Text (above 18pt) WCAG AAA ✓ Pass

Any Text WCAG AAA ✓ Pass

If you want to check with other color combinations, try the [Color Contrast Checker](#).

Decimal 12031345 Background



This preview shows how black text looks on a background with the Decimal color 12031345.



This preview shows how white text looks on a background with the Decimal color 12031345.

Color Blindness Simulation

Color vision deficiency is a very complex topic, and I could not describe the different causes any better than Wikipedia does, so if you want to learn more, you should check out their [article about color blindness](#).


Dichromacy



Original Color
12031345

Protanopia
10918772

Deuteranopia
12096881



Tritanopia
12291995

Trichromacy



Original Color
12031345

Protanomaly
11311475

Deuteranomaly
12096881

Tritanomaly
12226956

Monochromacy



Original Color
12031345

Achromatopsia
10197915

Achromatomaly
10852748

CSS Examples

Text

The CSS property to change the color of the text to Decimal 12031345 is called "color". The color property can be set on classes, ids or directly on the HTML element.

This example shows how text in the color #B79571 looks like.

```
.text, #text, p{  
    color:#B79571  
}
```

If you want to add a text shadow in that color use the text-shadow property, you can generate a text shadow directly with our [CSS Text Shadow Generator](#).

Here you see how black text with a 4 pixel #B79571 colored shadow looks like.

```
.shadow{ text-shadow: 4px 4px 2px #B79571
}
```

Border

The CSS property to change the border of an element to Decimal 12031345 is called "border". The border property can be set on classes, ids or directly on the HTML element.

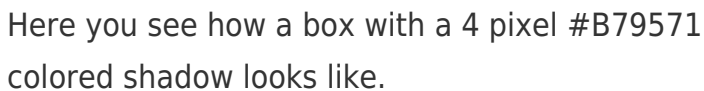
This example shows the color as border, it can be applied via the CSS property "border" or "border-color".

```
.border, #border, table{ border:4px solid
#B79571 }
```

If only the border color should be changed use the property `border-color`.

```
.border{ border-color:#B79571 }
```

If you want to add a box shadow in that color use:



Here you see how a box with a 4 pixel #B79571 colored shadow looks like.

```
.boxshadow{ -moz-box-shadow:4px 4px 4px  
4px #B79571; -webkit-box-shadow:4px 4px  
4px 4px #B79571; box-shadow:4px 4px 4px  
4px #B79571 }
```

Background

The CSS property to change the background color of an element to Decimal 12031345 is called "background". The background property can be set on classes, ids or directly on the HTML element.

```
.background, #background, body{  
background:#B79571 }
```

If only the background color should be changed can be used:

```
.background{ background-color:#B79571 }
```

This example shows the color as background, it is applied via the CSS property "background".

To optimize and compress your CSS code, you can use our [online CSS compressor and optimizer](#) based on csstidy. If you want to create a linear or radial gradient as background or border, check our [CSS Gradient Generator](#).

Hey! You found this booklet interesting? Support Converting Colors with the new Membership Option!

The pro membership hides all ads, plus gives you double the colors in the color bucket, and more awesome pro features!

[Learn more, Memberships starting at \\$2.50/m!](#)

**Follow me
on Twitter!**

@ConvertingColor