

Converting Colors

Decimal(12031633)

Have a look what the booklet for
Decimal(12031633) contains.

Decimal(12031633)	3
<i>Conversions</i>	4
<i>Details</i>	6
<i>Harmonies</i>	11
<i>Previews</i>	23
<i>Color Blindness Simulation</i>	26
<i>CSS Examples</i>	29

Color

Decimal(12031633)

Conversions

Conversions Part 1

Format	Color
Hex	B79691
RGB	183, 150, 145
RGB Percent	72%, 59%, 57%
CMY	0.2824, 0.4118, 0.4314
CMYK	0.00, 0.18, 0.21, 0.28
HSL	8°, 21%, 64%
HSV	8°, 21%, 72%
XYZ	35.5456, 33.9243, 31.4627
YIQ	159.2970, 21.2730, 5.4410

Conversions

Conversions Part 2

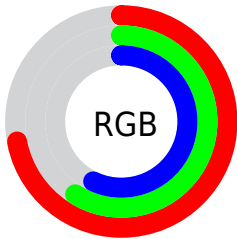
Format	Color
RYB	183, 151, 145
Decimal	12031633
CIELab	64.90, 11.52, 7.26
CIELCh	65, 13.617, 32.238
Yxy	33.9243, 0.3522, 0.3361
Android (android.graphics.Color)	4290221713 (0xFFB79691)
YUV	159.2970, -7.0484, 20.7875
Hunter-Lab	58.2446, 7.0073, 8.7438

Details

The Decimal color **12031633** is a light color, and the websafe version is hex **CC9999**. A complement of this color would be **9548471**, and the grayscale version is **10461087**.

A 20% lighter version of the original color is **15715527**, and **8479583** is the 20% darker color. If you saturate the color by 10%, you get **12027519**, and if you desaturate by 10%, it is **12035747**.

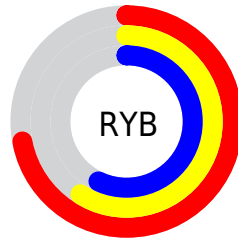
Distribution



Red (72%)

Green (59%)

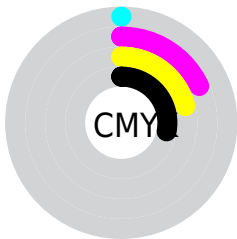
Blue (57%)



Red (72%)

Yellow (59%)

Blue (57%)

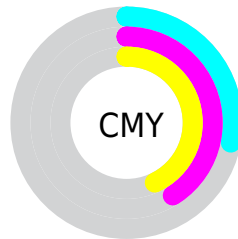


Cyan (0%)

Magenta (18%)

Yellow (21%)

Black (28%)



Cyan (28%)

Magenta (41%)

Yellow (43%)

Brightness & Saturation Gradients

These gradients show how the Decimal color 12031633 changes by changing the brightness by 10 percent. The first figure shows a shift by +10% for each color and the second figure -10%.

Similar to the brightness gradients but the following saturation gradients show a change of the Decimal color 12031633 by changing the saturation by 10% instead.

 12031633

 12031633

16777215

 10255479

 15715527

 8479583

 16771299

 6835015

 5190705

 3677980

 2295809

 0

 12031633

 12031633

 12027519

 12035747

 12023404

 12039862

 12019290

 12043976

 12015176

 12048090

 12011317

 12051949

 12007203

 12056063

 12003089

 12058623

 11999232

Harmonies

Analogous

The Analogous color harmony consists of three colors that are next to each other on the color wheel.



11965853



12031633



11639176

Triad

The Triadic color harmony groups three colors that are evenly spaced from another and form a triangle on the color wheel.



12031633



9151378



9543350

Complementary

The Complementary color scheme is a pair of colors which are on the opposite of each other on the color wheel.



12031633



9548471

Split Complementary

Split-complementary colors differ from the complementary color scheme. The scheme consists of three colors, the original color and two neighbors of the complement color.



8692403



12031633



8496542

Square

The Square scheme is like the rectangle color scheme, but the four colors are evenly spaced on the color wheel.



12031633



10068361



8299690



10590898

Rectangle

The Rectangle color scheme consists of four colors that form a rectangle on the color wheel.



12031633



11181190



8299690



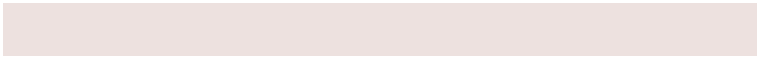
9215925

Sweetspot

The Sweet Spot groups the original color and five complimentary colors.



12031633



15589855



12030387



7893359



16250871



7895160

Same Dimension

The Same Dimension uses a secret algorithm to generate beautiful new colors.



12031633



15579826



12036241



6050899



10228736



1836032

Inverse Universe

The Inverse Universe completely reimagines the original color for something new.



9548471



11724269



9543863



5462876



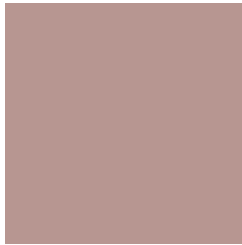
34716



6172

Previews

White Background



This preview shows how the Decimal color 12031633 looks on a white background.

Color Contrast Check

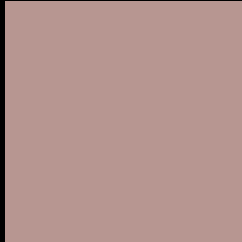
Large Text (above 18pt) WCAG AA × Fail

Any Text WCAG AA × Fail

Large Text (above 18pt) WCAG AAA × Fail

Any Text WCAG AAA × Fail

Black Background



This preview shows how the Decimal color 12031633 looks on a black background.

Color Contrast Check

Large Text (above 18pt) WCAG AA ✓ Pass

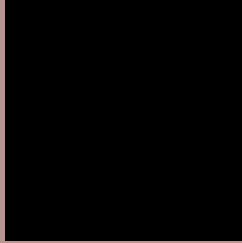
Any Text WCAG AA ✓ Pass

Large Text (above 18pt) WCAG AAA ✓ Pass

Any Text WCAG AAA ✓ Pass

If you want to check with other color combinations, try the [Color Contrast Checker](#).

Decimal 12031633 Background



This preview shows how black text looks on a background with the Decimal color 12031633.



This preview shows how white text looks on a background with the Decimal color 12031633.

Color Blindness Simulation

Color vision deficiency is a very complex topic, and I could not describe the different causes any better than Wikipedia does, so if you want to learn more, you should check out their [article about color blindness](#).

Dichromacy



Original Color
12031633

Protanopia
10722709

Deuteranopia
11704465



Tritanopia
12162207

Trichromacy



Original Color
12031633

Protanomaly
11180692

Deuteranomaly
11835281

Tritanomaly
12096922

Monochromacy



Original Color
12031633

Achromatopsia
10461087

Achromatomaly
11050138

CSS Examples

Text

The CSS property to change the color of the text to Decimal 12031633 is called "color". The color property can be set on classes, ids or directly on the HTML element.

This example shows how text in the color #B79691 looks like.

```
.text, #text, p{  
    color:#B79691  
}
```

If you want to add a text shadow in that color use the text-shadow property, you can generate a text shadow directly with our [CSS Text Shadow Generator](#).

Here you see how black text with a 4 pixel #B79691 colored shadow looks like.

```
.shadow{ text-shadow: 4px 4px 2px #B79691
}
```

Border

The CSS property to change the border of an element to Decimal 12031633 is called "border". The border property can be set on classes, ids or directly on the HTML element.

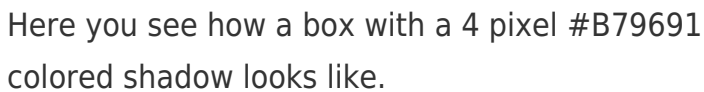
This example shows the color as border, it can be applied via the CSS property "border" or "border-color".

```
.border, #border, table{ border:4px solid
#B79691 }
```

If only the border color should be changed use the property `border-color`.

```
.border{ border-color:#B79691 }
```

If you want to add a box shadow in that color use:



Here you see how a box with a 4 pixel #B79691 colored shadow looks like.

```
.boxshadow{ -moz-box-shadow:4px 4px 4px  
4px #B79691; -webkit-box-shadow:4px 4px  
4px 4px #B79691; box-shadow:4px 4px 4px  
4px #B79691 }
```

Background

The CSS property to change the background color of an element to Decimal 12031633 is called "background". The background property can be set on classes, ids or directly on the HTML element.

```
.background, #background, body{  
background:#B79691 }
```

If only the background color should be changed can be used:

```
.background{ background-color:#B79691 }
```

This example shows the color as background, it is applied via the CSS property "background".

To optimize and compress your CSS code, you can use our [online CSS compressor and optimizer](#) based on csstidy. If you want to create a linear or radial gradient as background or border, check our [CSS Gradient Generator](#).

Hey! You found this booklet interesting? Support Converting Colors with the new Membership Option!

The pro membership hides all ads, plus gives you double the colors in the color bucket, and more awesome pro features!

[Learn more, Memberships starting at \\$2.50/m!](#)

**Follow me
on Twitter!**

@ConvertingColor