

Converting Colors

Decimal(12033932)

Have a look what the booklet for
Decimal(12033932) contains.

Decimal(12033932)	3
<i>Conversions</i>	4
<i>Details</i>	6
<i>Harmonies</i>	11
<i>Previews</i>	23
<i>Color Blindness Simulation</i>	26
<i>CSS Examples</i>	29

Color

Decimal(12033932)

Conversions

Conversions Part 1

Format	Color
Hex	B79F8C
RGB	183, 159, 140
RGB Percent	72%, 62%, 55%
CMY	0.2824, 0.3765, 0.4510
CMYK	0.00, 0.13, 0.23, 0.28
HSL	27°, 23%, 63%
HSV	27°, 23%, 72%
XYZ	36.6602, 36.7570, 29.9736
YIQ	164.0100, 20.4030, -0.8210

Conversions

Conversions Part 2

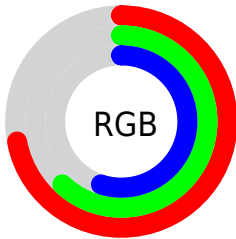
Format	Color
RYB	183, 174, 140
Decimal	12033932
CIELab	67.09, 5.80, 13.16
CIELCh	67, 14.382, 66.233
Yxy	36.7570, 0.3546, 0.3555
Android (android.graphics.Color)	4290224012 (0xFFB79F8C)
YUV	164.0100, -11.8369, 16.6542
Hunter-Lab	60.6276, 1.8370, 13.1270

Details

The Decimal color **12033932** is a light color, and the websafe version is hex **CC9999**. A complement of this color would be **9217207**, and the grayscale version is **10790052**.

A 20% lighter version of the original color is **15718082**, and **8481882** is the 20% darker color. If you saturate the color by 10%, you get **12031354**, and if you desaturate by 10%, it is **12036510**.

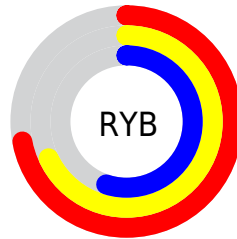
Distribution



Red (72%)

Green (62%)

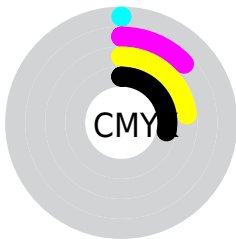
Blue (55%)



Red (72%)

Yellow (68%)

Blue (55%)

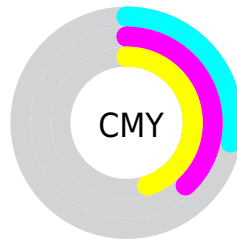


Cyan (0%)

Magenta (13%)

Yellow (23%)

Black (28%)



Cyan (28%)

Magenta (38%)

Yellow (45%)

Brightness & Saturation Gradients

These gradients show how the Decimal color 12033932 changes by changing the brightness by 10 percent. The first figure shows a shift by +10% for each color and the second figure -10%.

Similar to the brightness gradients but the following saturation gradients show a change of the Decimal color 12033932 by changing the saturation by 10% instead.

 12033932

 12033932

16777215

 10257778

 15718082

 8481882

 16773853

 6837058

 16777210

 5192748

 3680023

 2298368

 0

 12033932

 12033932

 12031354

 12036510

 12028775

 12039089

 12025941

 12041923

 12023363

 12044501

 12020785

 12047080

 12018206

 12049658

 12015628

 12052223

 12013824

 12055039

 12057599

Harmonies

Analogous

The Analogous color harmony consists of three colors that are next to each other on the color wheel.



12491925



12033932



11248522

Triad

The Triadic color harmony groups three colors that are evenly spaced from another and form a triangle on the color wheel.



12033932



8694694



11116472

Complementary

The Complementary color scheme is a pair of colors which are on the opposite of each other on the color wheel.



12033932



9217207

Split Complementary

Split-complementary colors differ from the complementary color scheme. The scheme consists of three colors, the original color and two neighbors of the complement color.



10068925



12033932



8563378

Square

The Square scheme is like the rectangle color scheme, but the four colors are evenly spaced on the color wheel.



12033932



9349784



9086907



12033198

Rectangle

The Rectangle color scheme consists of four colors that form a rectangle on the color wheel.



12033932



10593932



9086907



10789306

Sweetspot

The Sweet Spot groups the original color and five complimentary colors.



12033932



15590621



12029092



7893614



16250871



7895160

Same Dimension

The Same Dimension uses a secret algorithm to generate beautiful new colors.



12033932



15583403



12039308



6051667



10241280



1838080

Inverse Universe

The Inverse Universe completely reimagines the original color for something new.



9217207



11260141



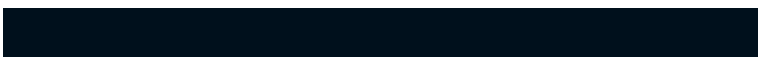
9211831



5462108



22428



4124

Previews

White Background



This preview shows how the Decimal color 12033932 looks on a white background.

Color Contrast Check

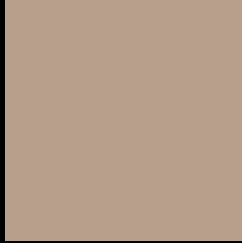
Large Text (above 18pt) WCAG AA × Fail

Any Text WCAG AA × Fail

Large Text (above 18pt) WCAG AAA × Fail

Any Text WCAG AAA × Fail

Black Background



This preview shows how the Decimal color 12033932 looks on a black background.

Color Contrast Check

Large Text (above 18pt) WCAG AA ✓ Pass

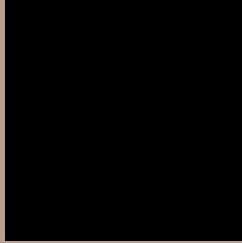
Any Text WCAG AA ✓ Pass

Large Text (above 18pt) WCAG AAA ✓ Pass

Any Text WCAG AAA ✓ Pass

If you want to check with other color combinations, try the [Color Contrast Checker](#).

Decimal 12033932 Background



This preview shows how black text looks on a background with the Decimal color 12033932.



This preview shows how white text looks on a background with the Decimal color 12033932.

Color Blindness Simulation

Color vision deficiency is a very complex topic, and I could not describe the different causes any better than Wikipedia does, so if you want to learn more, you should check out their [article about color blindness](#).


Dichromacy



Original Color
12033932

Protanopia
11248526

Deuteranopia
12295564



Tritanopia
12229543

Trichromacy



Original Color
12033932

Protanomaly
11510413

Deuteranomaly
12230284

Tritanomaly
12164253

Monochromacy



Original Color
12033932

Achromatopsia
10790052

Achromatomaly
11248283

CSS Examples

Text

The CSS property to change the color of the text to Decimal 12033932 is called "color". The color property can be set on classes, ids or directly on the HTML element.

This example shows how text in the color #B79F8C looks like.

```
.text, #text, p{  
    color:#B79F8C  
}
```

If you want to add a text shadow in that color use the text-shadow property, you can generate a text shadow directly with our [CSS Text Shadow Generator](#).

Here you see how black text with a 4 pixel #B79F8C colored shadow looks like.

```
.shadow{ text-shadow: 4px 4px 2px #B79F8C
}
```

Border

The CSS property to change the border of an element to Decimal 12033932 is called "border". The border property can be set on classes, ids or directly on the HTML element.

This example shows the color as border, it can be applied via the CSS property "border" or "border-color".

```
.border, #border, table{ border:4px solid
#B79F8C }
```

If only the border color should be changed use the property `border-color`.

```
.border{ border-color:#B79F8C }
```

If you want to add a box shadow in that color use:

Here you see how a box with a 4 pixel #B79F8C colored shadow looks like.

```
.boxshadow{ -moz-box-shadow:4px 4px 4px  
4px #B79F8C; -webkit-box-shadow:4px 4px  
4px 4px #B79F8C; box-shadow:4px 4px 4px  
4px #B79F8C }
```

Background

The CSS property to change the background color of an element to Decimal 12033932 is called "background". The background property can be set on classes, ids or directly on the HTML element.

```
.background, #background, body{  
background:#B79F8C }
```

If only the background color should be changed can be used:

```
.background{ background-color:#B79F8C }
```

This example shows the color as background, it is applied via the CSS property "background".

To optimize and compress your CSS code, you can use our [online CSS compressor and optimizer](#) based on csstidy. If you want to create a linear or radial gradient as background or border, check our [CSS Gradient Generator](#).

Hey! You found this booklet interesting? Support Converting Colors with the new Membership Option!

The pro membership hides all ads, plus gives you double the colors in the color bucket, and more awesome pro features!

[Learn more, Memberships starting at \\$2.50/m!](#)

**Follow me
on Twitter!**

@ConvertingColor