

Converting Colors

Decimal(12034456)

Have a look what the booklet for
Decimal(12034456) contains.

Decimal(12034456)	3
<i>Conversions</i>	4
<i>Details</i>	6
<i>Harmonies</i>	11
<i>Previews</i>	23
<i>Color Blindness Simulation</i>	26
<i>CSS Examples</i>	29

Color

Decimal(12034456)

Conversions

Conversions Part 1

Format	Color
Hex	B7A198
RGB	183, 161, 152
RGB Percent	72%, 63%, 60%
CMY	0.2824, 0.3686, 0.4039
CMYK	0.00, 0.12, 0.17, 0.28
HSL	17°, 18%, 66%
HSV	17°, 17%, 72%
XYZ	37.9408, 37.8240, 35.0068
YIQ	166.5520, 16.0010, 1.8650

Conversions

Conversions Part 2

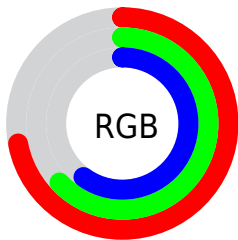
Format	Color
RYB	183, 165, 152
Decimal	12034456
CIELab	67.89, 6.55, 7.63
CIELCh	68, 10.055, 49.329
Yxy	37.8240, 0.3425, 0.3415
Android (android.graphics.Color)	4290224536 (0xFFB7A198)
YUV	166.5520, -7.1741, 14.4249
Hunter-Lab	61.5012, 2.4915, 9.3027

Details

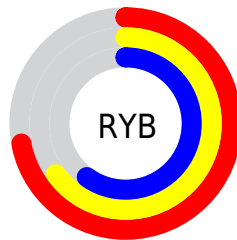
The Decimal color **12034456** is a light color, and the websafe version is hex **999999**. A complement of this color would be **10006199**, and the grayscale version is **10987431**.

A 20% lighter version of the original color is **15718606**, and **8547685** is the 20% darker color. If you saturate the color by 10%, you get **12031110**, and if you desaturate by 10%, it is **12037802**.

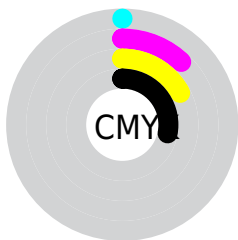
Distribution



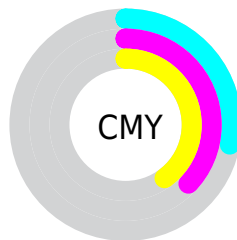
- Red (72%)
- Green (63%)
- Blue (60%)



- Red (72%)
- Yellow (65%)
- Blue (60%)



- Cyan (0%)
- Magenta (12%)
- Yellow (17%)
- Black (28%)



- Cyan (28%)
- Magenta (37%)
- Yellow (40%)

Brightness & Saturation Gradients

These gradients show how the Decimal color 12034456 changes by changing the brightness by 10 percent. The first figure shows a shift by +10% for each color and the second figure -10%.

Similar to the brightness gradients but the following saturation gradients show a change of the Decimal color 12034456 by changing the saturation by 10% instead.

■ 12034456

■ 12034456

16777215

■ 10258302

■ 15718606

■ 8547685

■ 16774378

■ 6837581

■ 5258806

■ 3745825

■ 2298891

■ 0

■ 12034456

■ 12034456

■ 12031110

■ 12037802

 12027763

 12041149

 12024417

 12044495

 12021071

 12047841

 12017725

 12051188

 12014378

 12054527

 12011032

 12057855

 12007686

 12058623

 12006656

Harmonies

Analogous

The Analogous color harmony consists of three colors that are next to each other on the color wheel.



12165024



12034456



11576468

Triad

The Triadic color harmony groups three colors that are evenly spaced from another and form a triangle on the color wheel.



12034456



9677730



10724534

Complementary

The Complementary color scheme is a pair of colors which are on the opposite of each other on the color wheel.



12034456



10006199

Split Complementary

Split-complementary colors differ from the complementary color scheme. The scheme consists of three colors, the original color and two neighbors of the complement color.



10004407



12034456



9415595

Square

The Square scheme is like the rectangle color scheme, but the four colors are evenly spaced on the color wheel.



12034456



10267033



9546419



11444657

Rectangle

The Rectangle color scheme consists of four colors that form a rectangle on the color wheel.



12034456



11183764



9546419



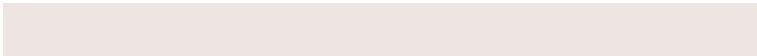
10462647

Sweetspot

The Sweet Spot groups the original color and five complimentary colors.



12034456



15590881



12032174



7893873



16250871



7895160

Same Dimension

The Same Dimension uses a secret algorithm to generate beautiful new colors.



12034456



15584190



12038296



6051155



10235136



1837056

Inverse Universe

The Inverse Universe completely reimagines the original color for something new.



10006199



12509165



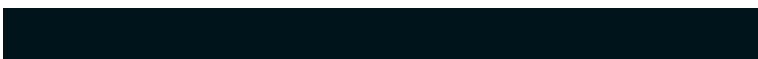
10002359



5462364



28316



5148

Previews

White Background



This preview shows how the Decimal color 12034456 looks on a white background.

Color Contrast Check

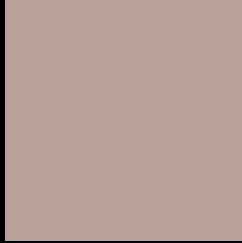
Large Text (above 18pt) WCAG AA × Fail

Any Text WCAG AA × Fail

Large Text (above 18pt) WCAG AAA × Fail

Any Text WCAG AAA × Fail

Black Background



This preview shows how the Decimal color 12034456 looks on a black background.

Color Contrast Check

Large Text (above 18pt) WCAG AA ✓ Pass

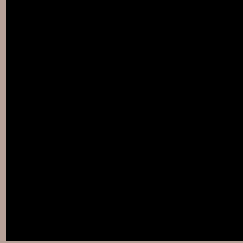
Any Text WCAG AA ✓ Pass

Large Text (above 18pt) WCAG AAA ✓ Pass

Any Text WCAG AAA ✓ Pass

If you want to check with other color combinations, try the [Color Contrast Checker](#).

Decimal 12034456 Background



This preview shows how black text looks on a background with the Decimal color 12034456.



This preview shows how white text looks on a background with the Decimal color 12034456.

Color Blindness Simulation

Color vision deficiency is a very complex topic, and I could not describe the different causes any better than Wikipedia does, so if you want to learn more, you should check out their [article about color blindness](#).

Dichromacy



Original Color
12034456

Protanopia
11249050

Deuteranopia
12230808



Tritanopia
12164779

Trichromacy



Original Color
12034456

Protanomaly
11510937

Deuteranomaly
12165272

Tritanomaly
12099492

Monochromacy



Original Color
12034456

Achromatopsia
10987431

Achromatomaly
11380130

CSS Examples

Text

The CSS property to change the color of the text to Decimal 12034456 is called "color". The color property can be set on classes, ids or directly on the HTML element.

This example shows how text in the color #B7A198 looks like.

```
.text, #text, p{  
  color:#B7A198  
}
```

If you want to add a text shadow in that color use the text-shadow property, you can generate a text shadow directly with our [CSS Text Shadow Generator](#).

Here you see how black text with a 4 pixel #B7A198 colored shadow looks like.

```
.shadow{ text-shadow: 4px 4px 2px #B7A198
}
```

Border

The CSS property to change the border of an element to Decimal 12034456 is called "border". The border property can be set on classes, ids or directly on the HTML element.

This example shows the color as border, it can be applied via the CSS property "border" or "border-color".

```
.border, #border, table{ border:4px solid
#B7A198 }
```

If only the border color should be changed use the property `border-color`.

```
.border{ border-color:#B7A198 }
```

If you want to add a box shadow in that color use:

Here you see how a box with a 4 pixel #B7A198 colored shadow looks like.

```
.boxshadow{ -moz-box-shadow:4px 4px 4px  
4px #B7A198; -webkit-box-shadow:4px 4px  
4px 4px #B7A198; box-shadow:4px 4px 4px  
4px #B7A198 }
```

Background

The CSS property to change the background color of an element to Decimal 12034456 is called "background". The background property can be set on classes, ids or directly on the HTML element.

```
.background, #background, body{  
background:#B7A198 }
```

If only the background color should be changed can be used:

```
.background{ background-color:#B7A198 }
```

This example shows the color as background, it is applied via the CSS property "background".

To optimize and compress your CSS code, you can use our [online CSS compressor and optimizer](#) based on csstidy. If you want to create a linear or radial gradient as background or border, check our [CSS Gradient Generator](#).

Hey! You found this booklet interesting? Support Converting Colors with the new Membership Option!

The pro membership hides all ads, plus gives you double the colors in the color bucket, and more awesome pro features!

[Learn more, Memberships starting at \\$2.50/m!](#)

**Follow me
on Twitter!**

@ConvertingColor