

Converting Colors

Decimal(12035496)

Have a look what the booklet for
Decimal(12035496) contains.

Decimal(12035496)	3
<i>Conversions</i>	4
<i>Details</i>	6
<i>Harmonies</i>	11
<i>Previews</i>	23
<i>Color Blindness Simulation</i>	26
<i>CSS Examples</i>	29

Color

Decimal(12035496)

Conversions

Conversions Part 1

Format	Color
Hex	B7A5A8
RGB	183, 165, 168
RGB Percent	72%, 65%, 66%
CMY	0.2824, 0.3529, 0.3412
CMYK	0.00, 0.10, 0.08, 0.28
HSL	350°, 11%, 68%
HSV	350°, 10%, 72%
XYZ	40.0515, 39.8047, 42.6179
YIQ	170.7240, 9.7650, 4.7490

Conversions

Conversions Part 2

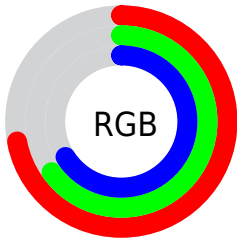
Format	Color
RYB	183, 165, 168
Decimal	12035496
CIELab	69.33, 7.05, 0.82
CIELCh	69, 7.100, 6.650
Yxy	39.8047, 0.3270, 0.3250
Android (android.graphics.Color)	4290225576 (0xFFB7A5A8)
YUV	170.7240, -1.3429, 10.7661
Hunter-Lab	63.0910, 2.9063, 4.1133

Details

The Decimal color **12035496** is a light color, and the websafe version is hex **999999**. A complement of this color would be **10860468**, and the grayscale version is **11250603**.

A 20% lighter version of the original color is **15719647**, and **8548724** is the 20% darker color. If you saturate the color by 10%, you get **12030873**, and if you desaturate by 10%, it is **12040119**.

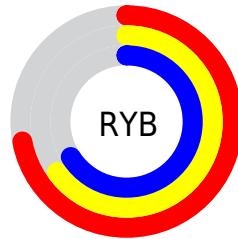
Distribution



Red (72%)

Green (65%)

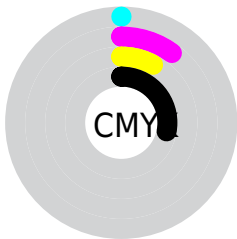
Blue (66%)



Red (72%)

Yellow (65%)

Blue (66%)

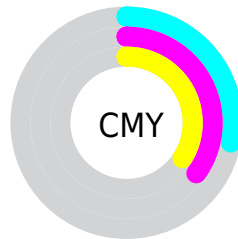


Cyan (0%)

Magenta (10%)

Yellow (8%)

Black (28%)



Cyan (28%)

Magenta (35%)

Yellow (34%)

Brightness & Saturation Gradients

These gradients show how the Decimal color 12035496 changes by changing the brightness by 10 percent. The first figure shows a shift by +10% for each color and the second figure -10%.

Similar to the brightness gradients but the following saturation gradients show a change of the Decimal color 12035496 by changing the saturation by 10% instead.

 12035496

 12035496

16777215

 10259342

 15719647

 8548724

 16775676

 6904156

 5325124

 3746606

 2365209

 720896

 0

 12035496

 12035496

 12030873

 12040119

 12025993

 12044999

 12021370

 12049622

 12016747

 12054245

 12012124

 12058612

 12007244

 12058623

 12002621

 11997998

 11993119

Harmonies

Analogous

The Analogous color harmony consists of three colors that are next to each other on the color wheel.



11773614



12035496



12035746

Triad

The Triadic color harmony groups three colors that are evenly spaced from another and form a triangle on the color wheel.



12035496



10922911



10398645

Complementary

The Complementary color scheme is a pair of colors which are on the opposite of each other on the color wheel.



12035496



10860468

Split Complementary

Split-complementary colors differ from the complementary color scheme. The scheme consists of three colors, the original color and two neighbors of the complement color.



10137009



12035496



10464676

Square

The Square scheme is like the rectangle color scheme, but the four colors are evenly spaced on the color wheel.



12035496



11381149



10137002



10791350

Rectangle

The Rectangle color scheme consists of four colors that form a rectangle on the color wheel.



12035496



11904927



10137002



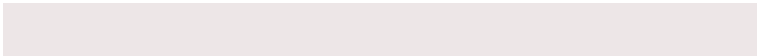
10267828

Sweetspot

The Sweet Spot groups the original color and five complimentary colors.



12035496



15591143



11838903



7893876



16250871



7895160

Same Dimension

The Same Dimension uses a secret algorithm to generate beautiful new colors.



12035496



15585749



12037029



6050644



10223642



1835013

Inverse Universe

The Inverse Universe completely reimagines the original color for something new.



12035496



15585749



10858935



6050644



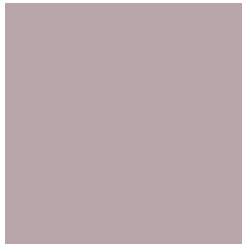
10223642



1835013

Previews

White Background



This preview shows how the Decimal color 12035496 looks on a white background.

Color Contrast Check

Large Text (above 18pt) WCAG AA × Fail

Any Text WCAG AA × Fail

Large Text (above 18pt) WCAG AAA × Fail

Any Text WCAG AAA × Fail

Black Background



This preview shows how the Decimal color 12035496 looks on a black background.

Color Contrast Check

Large Text (above 18pt) WCAG AA ✓ Pass

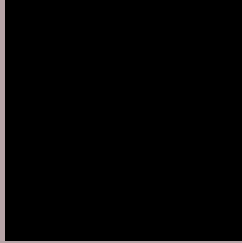
Any Text WCAG AA ✓ Pass

Large Text (above 18pt) WCAG AAA ✓ Pass

Any Text WCAG AAA ✓ Pass

If you want to check with other color combinations, try the [Color Contrast Checker](#).

Decimal 12035496 Background



This preview shows how black text looks on a background with the Decimal color 12035496.



This preview shows how white text looks on a background with the Decimal color 12035496.

Color Blindness Simulation

Color vision deficiency is a very complex topic, and I could not describe the different causes any better than Wikipedia does, so if you want to learn more, you should check out their [article about color blindness](#).


Dichromacy



Original Color
12035496

Protanopia
11315626

Deuteranopia
12231848



Tritanopia
12100784

Trichromacy



Original Color
12035496

Protanomaly
11577513

Deuteranomaly
12166312

Tritanomaly
12100781

Monochromacy



Original Color
12035496

Achromatopsia
11250603

Achromatomaly
11512234

CSS Examples

Text

The CSS property to change the color of the text to Decimal 12035496 is called "color". The color property can be set on classes, ids or directly on the HTML element.

This example shows how text in the color #B7A5A8 looks like.

```
.text, #text, p{  
  color:#B7A5A8  
}
```

If you want to add a text shadow in that color use the text-shadow property, you can generate a text shadow directly with our [CSS Text Shadow Generator](#).

Here you see how black text with a 4 pixel #B7A5A8 colored shadow looks like.

```
.shadow{ text-shadow: 4px 4px 2px #B7A5A8
}
```

Border

The CSS property to change the border of an element to Decimal 12035496 is called "border". The border property can be set on classes, ids or directly on the HTML element.

This example shows the color as border, it can be applied via the CSS property "border" or "border-color".

```
.border, #border, table{ border:4px solid
#B7A5A8 }
```

If only the border color should be changed use the property `border-color`.

```
.border{ border-color:#B7A5A8 }
```

If you want to add a box shadow in that color use:

Here you see how a box with a 4 pixel #B7A5A8 colored shadow looks like.

```
.boxshadow{ -moz-box-shadow:4px 4px 4px  
4px #B7A5A8; -webkit-box-shadow:4px 4px  
4px 4px #B7A5A8; box-shadow:4px 4px 4px  
4px #B7A5A8 }
```

Background

The CSS property to change the background color of an element to Decimal 12035496 is called "background". The background property can be set on classes, ids or directly on the HTML element.

```
.background, #background, body{  
background:#B7A5A8 }
```

If only the background color should be changed can be used:

```
.background{ background-color:#B7A5A8 }
```

This example shows the color as background, it is applied via the CSS property "background".

To optimize and compress your CSS code, you can use our [online CSS compressor and optimizer](#) based on csstidy. If you want to create a linear or radial gradient as background or border, check our [CSS Gradient Generator](#).

Hey! You found this booklet interesting? Support Converting Colors with the new Membership Option!

The pro membership hides all ads, plus gives you double the colors in the color bucket, and more awesome pro features!

[Learn more, Memberships starting at \\$2.50/m!](#)

**Follow me
on Twitter!**

@ConvertingColor